

# *Residential, Irrigation & Landscaping Product Catalog*



THE MOST **ADVANCED** NAME IN WATER MANAGEMENT SOLUTIONS™





# TABLE OF CONTENTS

**PRODUCT APPLICATIONS**

Matrix of appropriate applications for all products . . . . . 2

**PIPE**

**Single Wall**

- Characteristics . . . . . 2
- Single Wall Pipe . . . . . 3
- Bend-A-Drain™ Pipe . . . . . 4
- Onsite and Sewer & Drain Pipe . . . . . 5

**Dual Wall**

- N-12® . . . . . 6

**FLARED END SECTIONS** . . . . . 6

**FITTINGS**

- Single Wall. . . . . 7-12

**INSERTA TEE®** . . . . . 10

**FLEXSTORM® INLET FILTERS** . . . . . 13

**NYLOPLAST® DRAIN BASIN** . . . . . 13



**METER PITS** . . . . . 14

**FOUNDATION DRAINAGE & ACCESSORIES** . . . . . 14

**GEOSYNTHETICS** . . . . . 15

**PRESSURE PIPE** . . . . . 16-19

**ADVANEDGE® PIPE & FITTINGS** . . . . . 20

 <p><b>RESALE ITEM</b></p>	<p>RESALE ITEMS—ITEMS MARKED WITH  ARE PRODUCTS OFFERED FOR SALE BUT NOT MANUFACTURED BY ADS.</p>
---	--

*STANDARD AND METRIC UNITS ARE PROVIDED ON PRODUCTS THROUGHOUT THE CATALOG. UNLESS STATED OTHERWISE, METRIC UNITS SHOULD BE USED FOR REFERENCE PURPOSES ONLY. PRODUCTS SUBJECT TO CHANGE WITHOUT NOTICE. ALL SALES OF OUR PRODUCT ARE SUBJECT TO A LIMITED WARRANTY AND PURCHASERS ARE SOLELY RESPONSIBLE FOR INSTALLATION AND USE OF OUR PRODUCTS AND DETERMINING WHETHER A PRODUCT IS SUITED FOR ANY SPECIFIC NEEDS. PLEASE CONSULT A FULL COPY OF ADS TERMS AND CONDITIONS FOR SALE FOR FURTHER DETAILS.*

# PRODUCT APPLICATIONS

APPLICATIONS	SINGLE WALL					DOUBLE WALL
	HIGHWAY	HEAVY DUTY	BEND-A-DRAIN®	GRAVELLESS	SMOOTH WALL/TRIPLE WALL	N-12°
<b>RESIDENTIAL PRODUCTS</b> FOUNDATION/EDGE DRAINS		•			•	
DOWNSPOUTS/ROOF DRAINAGE		•	•		•	
CULVERTS	•	•				•
SUB DRAINAGE		•	•		•	•
ON-SITE WASTE MANAGEMENT				•	•	

SUGGESTED PRODUCTS AND APPLICATIONS ARE PROVIDED FOR GENERAL GUIDANCE ONLY. CONTACT AN ADS REPRESENTATIVE TO DISCUSS THE PRODUCTS ACCEPTABLE FOR SPECIFIC APPLICATIONS.

## SINGLE WALL PIPE

### CHARACTERISTICS

PRODUCT	DESCRIPTION	DIAMETER RANGE	LENGTH	CONNECTION	SPECIFICATIONS/ PERFORMANCE
<b>HIGHWAY PIPE</b>	Annular corrugated single wall	3"-24" (75-600 mm)	100'-3200' (30-960m) coil for 3"-6" (75-150 mm) diameter pipe 20' (6m) for 8"-24" (200-600 mm) diameter pipe	Internal, external snap or split band couplers	3"-10" (75- 250 mm): AASHTO M252 Type C 12"-24" (300- 600 mm): AASHTO M294 Type C
<b>HEAVY DUTY PIPE</b>	Annular corrugated single wall	3"-24" (75-600 mm)	10'-20' (3-6m) sticks, 100'-5500' (30-1676m) coils, depending on the diameter	Internal, external snap or split band couplers	3"-6" (75-150 mm): ASTM F405 8"-24" (200- 600 mm): ASTM F667
<b>BEND-A-DRAIN PIPE</b>	Annular corrugated single wall	4" (100 mm)	12' (3.6 m) or 25' (7.6)	2' (.6 m) corrugated single wall coupler	
<b>GRAVELLESS PIPE</b>	Annular corrugated single wall wrapped in geotextile fabric with 5/8" holes	8" (200 mm) 10" (250 mm)	10'-20' (3-6m)	Split band or internal snap coupler	ASTM F667
<b>SMOOTHWALL/TRIPLE WALL PIPE</b>	Smooth white exterior and smooth black interior	3" (75 mm) 4" (100 mm) 6" (150 mm)	10' (3m)	Bell-and-spigot	ASTM F810

# SINGLE WALL PIPE

## HEAVY DUTY

### 3"-24" HEAVY DUTY SINGLE WALL

INSIDE DIAMETER	STANDARD LENGTHS	STYLE	PRODUCT CODE
3" (75 mm)	10' (3 m)	Plain	03510010
	100' (30 m)		03510100
	300' (91 m)		03510300
	10' (3 m)	Perf	03010010
	100' (30 m)		03010100
	300' (91 m)		03010300
	100' (30 m)	Perf/wrap	03730100BS
	300' (91 m)		03730300BS
4" (100 mm)	10' (3m )	Plain	04540010
	100' (30 m)		04510100
	250' (75 m)		04510250
	10' (3 m)	Perf	04040010
	100' (30 m)		04010100
	250' (75 m)		04010250
	100' (30 m)	Perf/wrap	04730100BS
	250' (75 m)		04730250BS
6" (150 mm)	10' (3 m)	Plain	06510010
	20' (6 m)		06510020
	100' (30 m)		06510100
	10' (3 m)	Perf	06010010
	20' (6 m)		06010020
	100' (30 m)		06010100
	100' (30 m)	Perf/wrap	06730100BS
8" (200 mm)	20' (6 m)	Plain	08510020
	20' (6 m)	Perf	08010020
	20' (6 m)	Perf/wrap	08730020
10" (200 mm)	20' (6 m)	Plain	10510020
	20' (6 m)	Perf	10010020
	20' (6 m)	Perf/wrap	10730020
12" (300 mm)	20' (6 m)	Plain	12510020
		Perf	12010020
15" (375 mm)	20' (6 m)	Plain	15510020
		Perf	15010020
18" (450 mm)	20' (6 m)	Plain	18510020
		Perf	18010020
24" (600 mm)	20' (6 m)	Plain	24510020
		Perf	24010020



**HEAVY DUTY PIPE**

Ideal for drainage products where flexibility, light weight and low costs are important.

# SINGLE WALL PIPE BEND-A-DRAIN PIPE

## BEND-A-DRAIN PIPE

DIAMETER	PACKAGE QUANTITY	PRODUCT CODE
4" x 12' (100 mm x 3.7 m) Solid Pipe	1	335112
4" x 12' (100 mm x 3.7 m) Perforated Pipe	1	330112
4" x 25' (100 mm x 7.6 m) Solid Pipe	1	335125
4" x 25' (100 mm x 7.6 m) Perforated Pipe	1	330125
4" x 25' (100 mm x 7.6 m) Perf. Sock Pipe	1	337325BS
4" x 2' (100 mm x 0.6 m) Solid Connector	1	335102



Offers option of expanding pipe lengthwise and into unlimited angular adjustments, which will lock and remain in place once positioned. Can be utilized with above ground and below ground downspout drainage, low spot drainage and french drains.



# SINGLE WALL PIPE

## SMOOTHWALL, TRIPLE WALL

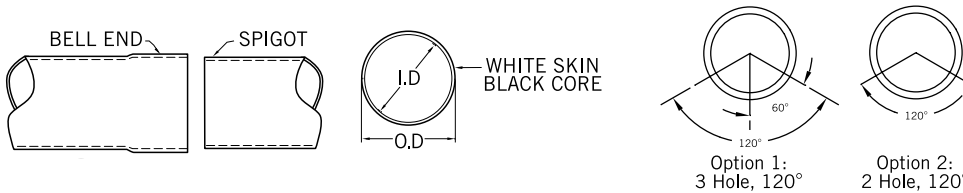
### 3", 4", 6" SMOOTHWALL PIPE

DIAMETER	AVG. OUTSIDE DIAMETER	STANDARD LENGTHS	STYLE	PRODUCT CODE INLINE	PRODUCT CODE SPIN ON BELL*
3" (75 mm)	3.25" (83 mm)	10' (3 m)	Plain	03560010	
			2-hole, 120°	03570010	
4" (100 mm)	4.215" (107 mm)	10' (3 m)	Plain	04560010	04560010SP
			2-hole, 120°	04570010	04570010SP
			3-hole, 120° <sup>5</sup> / <sub>8</sub> "	04580010	04580010SP
			3-hole, 120° <sup>3</sup> / <sub>4</sub> "	04580010120	04580010SP120
6" (150 mm)	6.275" (159 mm)	10' (3 m)	Plain	06560010	
			2-hole, 120°	06570010	
			3-hole, 120°	06580010	



\*LIMITED GEOGRAPHIC AVAILABILITY. CONTACT YOUR LOCAL SALES REPRESENTATIVE FOR AVAILABILITY.

A white HDPE layer around a black polyethylene core forms a light weight pipe for sidewalk culverts, turf drainage and onsite waste management systems.



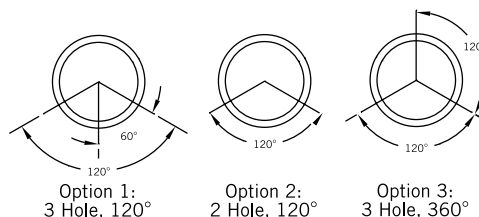
### 3", 4" TRIPLEWALL

DIAMETER	AVG. OUTSIDE DIAMETER	STANDARD LENGTHS	STYLE	PRODUCT CODE
3" (75 mm)	3.25" (83 mm)	10' (3 m)	Plain	0355-0010
			2-hole	0352-0010
4" (100 mm)	4.215" (107 mm)	10' (3 m)	Plain	0455-0010
			2-hole	0452-0010
			3-hole	0453-0010



\*LIMITED GEOGRAPHIC AVAILABILITY. CONTACT YOUR LOCAL SALES REPRESENTATIVE FOR AVAILABILITY.

A triple bonded polyethylene pipe with smooth inner and outer walls and a corrugated structural core. Designed to have superior pipe stiffness to that of PVC sewer and drain pipe.



# DUAL WALL PIPE

## N-12, FLARED END SECTIONS

### 4" - 10" DUAL WALL PIPE OFFERINGS

DIAMETER	LENGTH	STYLE	PRODUCT CODE
4" (100 mm)	20' (6 m)	solid	04150020DW
		perf	04110020DW
6" (150 mm)	20' (6 m)	solid	06150020DW
		perf	06110020DW
8" (200 mm)	20' (6 m)	solid	08150020DW
		perf	08110020DW
10" (250 mm)	20' (6 m)	solid	10150020DW
		perf	10110020DW
12" (300 mm)	20' (6 m)	solid	12950020DW
		perf	12910020DW
15" (375 mm)	20' (6 m)	solid	15950020DW
		perf	15910020DW
18" (450 mm)	20' (6 m)	solid	18950020DW
		perf	18910020DW
24" (600 mm)	20' (6 m)	solid	24950020DW
		perf	24910020DW



Dual wall pipe has a smooth interior wall, a corrugated exterior and offers exceptional hydraulics and strength. N-12 provides superior corrosion and abrasion resistance.

### FLARED END SECTIONS

SIZE	PRODUCT CODE
10" (250 mm)	1015NP
12" (300 mm)/15" (375 mm)	1215NP
18" (450 mm)	1810NP
24" (600 mm)	2410NP
30" (750 mm)	3015NP
36" (900 mm)	3615NP



Minimizes washout potential and architecturally appealing entrance and exit from culverts.



# COUPLERS

## INTERNAL SNAP, EXTERNAL SNAP & SPLIT BAND

### INTERNAL COUPLERS

DIAMETER	PACKAGE QUANTITY	PRODUCT CODE
3" (75 mm)	50	0315AA
4" (100 mm)	16	0417AA
4" (100 mm) ag	12	0416AA
5" (125 mm)	12	0515AA
6" (150 mm)	9	0615AA
8" (200 mm)	4	0815AA
10" (250 mm)	4	1015AA



INTERNAL COUPLER

### INTERNAL REDUCING COUPLERS

SIZE	PACKAGE QUANTITY	PRODUCT CODE
5" x 4" (125 x 100 mm)	16	0425AA
6" x 5" (150 x 125 mm)	9	0526AA



INTERNAL REDUCING COUPLER

### EXTERNAL SNAP COUPLERS

DIAMETER	PACKAGE QUANTITY	PRODUCT CODE
3" (75 mm)	24	0312AA
4" (100 mm)	24	0412AA
5" (125 mm)	24	0512AA
6" (150 mm)	8	0612AA
8" (200 mm)	6	0812AA
10" (250 mm)	3	1012AA



EXTERNAL SNAP COUPLER

### SPLIT COUPLERS

DIAMETER	PACKAGE QUANTITY	PRODUCT CODE
3" (75 mm)	36	0311AA
4" (100 mm)	24	0411AA
5" (125 mm)	24	0511AA
6" (150 mm)	14	0611AA
8" (200 mm)	8	0811AA
10" (250 mm)	12	1011AA
12" (300 mm)	6	1265AA
15" (375 mm)	1	1565AA
18" (450 mm)	1	1865AA
24" (600 mm)	1	2465AA



SPLIT COUPLER

# END CAPS & PLUGS

## SNAP END CAPS\*

DIAMETER	PACKAGE QUANTITY		TYPE	PRODUCT CODE	
	SNAP	SPLIT		SNAP	SPLIT
3" (75 mm)	30		Perf	0335AA	
3" (75 mm)	30	32	Solid	0332AA	0331AA
4" (100 mm)	40	34	Solid	0432AA	0431AA
5" (125 mm)		24	Solid		0531AA
6" (150 mm)		12	Solid		0631AA
8" (200 mm)	6		Solid	0832AA	
10" (250 mm)	6		Solid	1032AA	
12" (300 mm)		4	Solid		1267AA
15" (375 mm)		1	Solid		1567AA
18" (450 mm)		1	Solid		1867AA
24" (600 mm)		1	Solid		2467AA



**SNAP END CAP**



**SPLIT END CAP 3"-10"**



**SPLIT END CAP 12"-24"**

*\*ADS END CAPS ARE FOR HORIZONTAL APPLICATIONS ONLY. ADS END CAPS ARE NOT PERMITTED TO BE USED IN ANY VERTICAL APPLICATIONS. MISUSE OR FAILURE TO PROPERLY SECURE END CAPS MAY RESULT IN DAMAGE TO PERSONS OR PROPERTY OR MAY RESULT IN INJURY OR DEATH.*

## INTERNAL END PLUGS

DIAMETER	PACKAGE QUANTITY	TYPE	PRODUCT CODE
3" (75 mm)	100	Solid	0333AA
4" (100 mm)	100	Solid	0433AA
		Perforated	0434AA
5" (125 mm)	100	Solid	0533AA
6" (150 mm)	50	Solid	0633AA



**INTERNAL END PLUG—  
SOLID AND PERFORATED**

# ADAPTERS & DOWNSPOUT ADAPTERS

## ADAPTERS

DIAMETER	PACKAGE QUANTITY	TYPE	PRODUCT CODE
3" (75 mm)	24	Clay	0362AA
4" (100 mm)	24	Clay	0462AA
5" (125 mm)	24	Clay	0562AA
6" (150 mm)	11	Clay	0662AA
8" (200 mm)	9	Clay	0862AA
4" (100 mm)	24	Sewer & Drain	0467AA
4" (100 mm)	24	Septic Tank	0463AA



**ADAPTER**

Connects singlewall pipe to clay pipe and sewer & drain pipe.

## DOWNSPOUT ADAPTERS

SIZE Downspout Dimensions x Pipe Diameter	PACKAGE QUANTITY	PRODUCT CODE
3" x 2.25" x 2.5" (75 mm x 56 mm x 62.5 mm)	24	0364AA
4" x 3.25" x 2.5" (100 mm x 81 mm x 62.5 mm)	24	0464AA
4" x 4.25" x 3" (100 mm x 106 mm x 75 mm)	20	0465AA
4" x 2.56" x 2.56" (100 mm x 63 mm x 63 mm)	24	0466AA



**DOWNSPOUT ADAPTER**

Connects downspouts to singlewall pipe for downspout drainage.

## EXPANDABLE DOWNSPOUT ADAPTERS

SIZE	PACKAGE QUANTITY	PRODUCT CODE
2" x 3" (50 mm x 75 mm)	6	0473AA
3" x 3" (75 mm x 75 mm)	6	0474AA



Adapter comes in 8½" compressed length and expands to 16". Bends from 45° to 90° angles. Angles around landscaping and easily bent to move for mowing.

# REDUCERS & ELBOWS

## REDUCERS\*

SIZE (Main x Stub)	PACKAGE QUANTITY	PRODUCT CODE
4" x 3" (100 mm x 75 mm)	24	0314AA
5" x 4" (125 mm x 100 mm)	20	0514AA
5" x 4" (125 mm x 100 mm)	20	0514AA
6" x 4" (150 mm x 100 mm)	9	0614AA
6" x 5" (150 mm x 125 mm)	9	0516AA
8" x 6" (200 mm x 150 mm)	9	0816AA
10" x 8" (250 mm x 200 mm)	6	1018AA
12" x 10" (300 mm x 250 mm)	1	1210AA



**SNAP REDUCING COUPLER**

\*COUPLERS SOLD SEPARATELY

## 90 DEGREE SNAP ELBOWS

SIZE	PACKAGE QUANTITY	PRODUCT CODE
3" (75 mm)	12	0390AA
4" (100 mm)	10	0490AA



**90° SNAP ELBOW**

## 45 DEGREE SNAP ELBOWS

SIZE	PACKAGE QUANTITY	PRODUCT CODE
4" (100 mm)	15	0445AA



**45° SNAP ELBOW**

## INSERTA TEE\*

SIZE	PRODUCT CODE
2" (50 mm) IPS/SCH 40 into 8" (200 mm) corrugated HDPE pipe	2IPS8N12
2" (50 mm) IPS/SCH 40 into 10" (250 mm) corrugated HDPE pipe	2IPS10N12
2" (50 mm) IPS/SCH 40 into 12" (300 mm) corrugated HDPE pipe	2IPS12N12
2" (50 mm) IPS/SCH 40 into 8" (200 mm) SDR35	2IPS8P35
4" (100 mm) IPS/SCH 40 into 8" (200 mm) corrugated HDPE pipe	4IPSFB8N12
4" (100 mm) IPS/SCH 40 into 10" (250 mm) corrugated HDPE pipe	4IPSFB10N12
4" (100 mm) IPS/SCH 40 into 12" (300 mm) corrugated HDPE pipe	4IPSFB12N12
4" (100 mm) SDR 26 into 8" (200 mm) corrugated HDPE pipe	4P26FB8N12
4" (100 mm) SDR 26 into 10" (250 mm) corrugated HDPE pipe	4P26FB10N12
4" (100 mm) SDR 26 into 12" (300 mm) corrugated HDPE pipe	4P26FB12N12
4" (100 mm) SDR 26 into 18" (450 mm) corrugated HDPE pipe	4P26FB18N12
4" (100 mm) SDR 26 into 8" (200 mm) SDR 35	4P26FB8P35
4" (100 mm) SDR 26 into 12" (200 mm) SDR 35	4P26FB12P35
4" (100 mm) corrugated HDPE into 10" (200 mm) corrugated HDPE	4N1210N12
4" (100 mm) corrugated HDPE into 12" (250 mm) corrugated HDPE	4N1212N12
4" (100 mm) corrugated HDPE into 18" (450 mm) corrugated HDPE	4N1218N12



**2" INSERTA TEE**



**4" SDR 35**



**4" CORRUGATED HDPE**

\* Sizes for 6"-30" are also available.

Compression fits into the cored wall of a mainline and requires no special tools.

# TEES

## BLIND, SNAP, REDUCING & BLIND MULTIPLE

### BLIND TEES

SIZE	PACKAGE QUANTITY	PRODUCT CODE
3" (75 mm)	12	0341AA
4" (100 mm)	8	0441AA
5" (125 mm)	4	0541AA
6" (150 mm)	3	0641AA
8" (200 mm)	1	0841AA
10" (250 mm)	1	1041AA



BLIND TEE

### SNAP TEES

SIZE	PACKAGE QUANTITY	PRODUCT CODE
3" (75 mm)	12	0321AA
4" (100 mm)	8	0421AA
5" (125 mm)	4	0525AA
6" (150 mm)	3	0626AA



SNAP TEE

### HINGED TEE\*

SIZE	PACKAGE QUANTITY	PRODUCT CODE
4" (100 mm)	12	0421AAHF



HINGED TEE

\*Fits singlewall and dual-wall pipe.

Hinged corrugated tee fits on 4" singlewall pipe and N-12® dual wall pipe. Hinged corrugated tee will fasten securely to pipe and allow for ease of use in the field.

### REDUCING TEES

SIZE (Main x Stub)	PACKAGE QUANTITY	PRODUCT CODE
5" x 3" (125 mm x 75 mm) Red. Tee	4	0523AA
5" x 4" (125 mm x 100 mm) Red. Tee	4	0524AA
6" x 5" (150 mm x 125 mm) Red. Tee	3	0625AA



REDUCING TEE

### BLIND MULTIPLE TEES

SIZE (Main x Stub)	PACKAGE QUANTITY	PRODUCT CODE
8" x 8"/6"/4" (200 mm/150 mm/100 mm)	1	0845AA
10" x 10"/8" (250 mm/200 mm)	1	1045AA
12" x 12"/10" (300 mm/250 mm)	1	1247AA
15" x 10" (375 mm/250 mm)	1	1547AA
18" x 12" (450 mm/300 mm)	1	1847AA



BLIND MULTIPLE TEE

# TEES & WYES

## MULTIPLE, MULTIPLE CROSS & INTERNAL TAP TEES

### MULTIPLE TEES

SIZE (Main x Stub)	PACKAGE QUANTITY	PRODUCT CODE
5" x 5" x 5" (125mm x 125 x 125/100 mm)	4	0524AA
6" x 3"/4"/5"/6" (150mm x 75/100/125/150 mm)	3	0644AA
8" x 4"/5"/6"/8" (200mm x 100/125/150/200 mm)	1	0844AA
10" x 6"/8"/10" (250mm x 150/200/250 mm)	1	1044AA



**MULTIPLE TEE**

### MULTIPLE CROSS TEES

SIZE	PACKAGE QUANTITY	PRODUCT CODE
6" (150 mm)	3	0654AA



**MULTIPLE CROSS TEE**

### INTERNAL TAP TEES

SIZE	PACKAGE QUANTITY	PRODUCT CODE
3" x 6"/8" (75 mm x 150 mm/200 mm)	24	0350AA
4" x 6"/8" (100 mm x 150 mm/200 mm)	24	0450AA
4" x 6"/8" (100 mm x 150 mm/200 mm)	24	0460AA
4" x 10"/12" (100 mm x 250 mm/300 mm)	24	0410AA
4" x 10"/12" (100 mm x 250 mm/300 mm)	24	0420AA



**TAP TEE**

### WYES

SIZE (SIZE ON SIZE)	PACKAGE QUANTITY	PRODUCT CODE
3" (75 mm)	7	0322AA
4" (100 mm)	5	0422AA
5" (125 mm)	4	0522AA
6" (150 mm)	2	0622AA
8" (200 mm)	1	0822AA



**WYE**

# FLEXSTORM FILTERS & DRAIN BASIN

## CATCH-IT (TEMPORARY)

SIZE	PACKAGE QUANTITY	PRODUCT CODE
18" x 18" (450 mm x 450 mm) square	1	62SSQFX
24" x 24" (600 mm x 600 mm) square	1	62MSQFX
12" (300 mm) round	1	6212NYFX
18" (450 mm) round	1	6218NYFX
24" (600 mm) round	1	6224NYFX



The FLEXSTORM CATCH-IT system is a temporary inlet protection filter and storm water runoff control. Filter includes a bypass protection to prevent jobsite ponding. Units install in 30 seconds and may be used for landscape construction, roads, parking lots, floor drains, maintenance and residential development.

## PURE (PERMANENT)

SIZE	PACKAGE QUANTITY	PRODUCT CODE
24" x 24" (600 mm x 600 mm) square	1	62MHDPCP
24" x 24" (600 mm x 600 mm) square	1	62MHDRPCP
24" x 24" (600 mm x 600 mm) square	1	62MHDFX
24" (600 mm) round	1	62MHDFXP



The FLEXSTORM PURE system is a permanent inlet protection and storm water runoff control filter. PURE inlet filters fit any drainage structure and are available with site-specific filter bags providing various filtration levels. May be utilized in car washes, loading ramps, landscapes, parking lots, dock drains, maintenance and industrial.

## OPEN THROAT CURB INLET

SIZE	PACKAGE QUANTITY	PRODUCT CODE
Small up to 48" (1200 mm)	1	62HDWM1FX
Medium between 48"-96" (1200-2425 mm)	1	62HDWM2FX



FX: woven bag at 82% filtration efficiency for construction sediment load

PC: woven with Adsorb-it line targeting small particle and hydrocarbon removal

FX+ and PC+ bags include ClearTec skimmer pouches for additional hydrocarbon removal capabilities

## NYLOPLAST DRAIN BASIN

SIZE	PACKAGE QUANTITY	PRODUCT CODE
8" (200 mm) Diameter Drain Basin	1	2808AG01HD
12" (300 mm) Diameter Drain Basin	1	2812AG01HD



# METER PITS

## METER PITS\*

I.D. X LENGTH	PRODUCT CODE
18" x 24" (450 mm x 600 mm)	1805ACH
18" x 30" (450 mm x 750 mm)	1805AAH
18" x 36" (450 mm x 900 mm)	1805ABH
18" x 42" (450 mm x 1050 mm)	1805ADH
18" x 48" (450 mm x 1200 mm)	1805AEH
21" x 24" (525 mm x 600 mm)	2105ACH
21" x 30" (525 mm x 750 mm)	2105AAH
21" x 36" (525 mm x 900 mm)	2105ABH
21" x 48" (525 mm x 1200 mm)	2105AEH
24" x 24" (600 mm x 600 mm)	2405ACH
24" x 30" (600 mm x 750 mm)	2405AAH
24" x 36" (600 mm x 900 mm)	2405ABH
24" x 42" (600 mm x 1050 mm)	2405ADH
24" x 48" (600 mm x 1200 mm)	2405AEH
18" x 12' (450 mm x 3.5 m) (UNCUT SECTION)	18050012H
21" x 12' (525 mm x 3.5 m) (UNCUT SECTION)	21050012H
24" x 12' (600 mm x 3.5 m) (UNCUT SECTION)	24050012H



METER PITS

\*LIMITED GEOGRAPHIC AVAILABILITY.

All meter pits are white and notched.  
Uncut sections do not have notches.

# FOUNDATION DRAINAGE & ACCESSORIES

## FOUNDATION DRAINAGE PRODUCTS

DESCRIPTION	DIMENSIONS	PRODUCT CODE
24" Sump Liner—Locking	18" diameter x 24" height	1524ADL
30" Sump Liner—Locking	18" diameter x 30" height	1530ADL
HD Sump Lid 5/Bag	18" diameter	1537AD
Locking Sump Lid 5/Bag	18" diameter	1537ADL
ADS Radon Vented Sump Lid	18" diameter	1538AD



SUMP PUMP & NOTCHED LID



RADON DUAL PURPOSE VENTED SUMP AND LID



# GEOSYNTHETICS

## NONWOVEN GEOTEXTILES

WEIGHT	W X L	PRODUCT CODE
3 oz. (85 g)	150" x 360' (3.8 m x 110 m)	0311TG
3 oz. (85 g)	180" x 360' (4.6 m x 110 m)	0311TS
3.5 oz. (100 g)	24" x 360' (.6 m x 110 m)	0351TC
3.5 oz. (100 g)	36" x 3600' (.9 m x 110 m)	0351TA
3.5 oz. (100 g)	48" x 360' (1.2 m x 110 m)	0351TB
3.5 oz. (100 g)	90" x 360' (2.3 m x 110 m)	0351TT
3.5 oz. (100 g)	150" x 360' (3.8 m x 110 m)	0351TG
3.5 oz. (100 g)	180" x 360' (4.6 m x 110 m)	0351TS
4 oz. (113 g)	90" x 360' (2.3 m x 110 m)	0401TT
4 oz. (113 g)	150" x 360' (3.8 m x 110 m)	0401TG
4 oz. (113 g)	180" x 360' (4.6 m x 110 m)	0401TS
4.5 oz. (128 g)	150" x 360' (3.8 m x 110 m)	0451TG
4.5 oz. (128 g)	180" x 360' (4.6 m x 110 m)	0451TS
6 oz. (170 g)	150" x 360' (3.8 m x 110 m)	0601TG
6 oz. (170 g)	180" x 360' (4.6 m x 110 m)	0601TS
7 oz. (198 g)	72" x 360' (1.8 m x 110 m)	0701TE
7 oz. (198 g)	150" x 360' (3.8 m x 110 m)	0701TG
7 oz. (198 g)	180" x 300' (4.6 m x 91 m)	0701TS
8 oz. (227 g)	150" x 360' (3.8 m x 110 m)	0801TG
8 oz. (227 g)	180" x 300' (4.6 m x 91 m)	0801TS



Nonwoven filter soil particles from drainage systems. Can be utilized for subsurface drainage, roadway separation, railroad stabilization, hard armor underlayment and underground retention/detention systems.

## WOVEN GEOTEXTILES

GRAB	W X L	PRODUCT CODE
200	150" x 432' (3.8 m x 132 m)	200WTK
200	180" X 360' (4.6 m x 110 m)	200WTS
200	210" x 300' (5.3 m x 91 m)	200WTM
315	150" x 360' (3.8 m x 110 m)	315WTK
315	210" x 257' (5.3 m x 78 m)	315 WTM
315	180" x 300' (4.6 m x 91 m)	315WTS



Manufactured from extruded polypropylene monofilaments to form a stable construction fabric. Woven fabrics are used primarily for hard armor underlayment, subsurface drainage and landfill leachate collection.

## GEOGRIDS

W X L	PRODUCT CODE
13.1' X 246' (4 m x 75 m)	BX114GG
13.1' X 164' (4 m x 50 m)	BX124GG
13.1' X 164' (4 m x 50 m)	BX134GG
13.1' X 246' (4 m x 75 m)	BX144GG



Geogrids reinforce soil and their high tensile strength makes them ideal for base reinforcement and soft soil stabilization.

# ADS POLYFLEX™ POTABLE GRADE PIPE

## SIDR 19 (100 PSI) PE4710

SIZE	PRODUCT CODE	COIL LENGTH	MAX. ALLOWABLE PRESSURE AT 73° F
¾" (19 mm)	X2-75100100	100' (30 m)	100 psi (690 kPa)
¾" (19 mm)	X2-75100300	300' (90 m)	100 psi (690 kPa)
¾" (19 mm)	X2-75100500	500' (150 m)	100 psi (690 kPa)
1" (25 mm)	X2-1100100	100' (30 m)	100 psi (690 kPa)
1" (25 mm)	X2-1100300	300' (90 m)	100 psi (690 kPa)
1" (25 mm)	X2-1100500	500' (150 m)	100 psi (690 kPa)
1¼" (32 mm)	X2-125100100	100' (30 m)	100 psi (690 kPa)
1¼" (32 mm)	X2-125100300	300' (90 m)	100 psi (690 kPa)
1½" (38 mm)	X2-150100100	100' (30 m)	100 psi (690 kPa)
1½" (38 mm)	X2-150100300	300' (90 m)	100 psi (690 kPa)
2" (50 mm)	X2-2100100	100' (30 m)	100 psi (690 kPa)
2" (50 mm)	X2-2100300	300' (90 m)	100 psi (690 kPa)



## SIDR 15 (125 PSI) PE4710

SIZE	PRODUCT CODE	COIL LENGTH	MAX. ALLOWABLE PRESSURE AT 73° F
½" (13 mm)	X2-50125100	100' (30 m)	125 psi (862 kPa)
½" (13 mm)	X2-50125300	300' (90 m)	125 psi (862 kPa)
½" (13 mm)	X2-50125400	400' (120 m)	125 psi (862 kPa)
¾" (19 mm)	X2-75125100	100' (30 m)	125 psi (862 kPa)

## SIDR 11.5 (160 PSI) PE4710

SIZE	PRODUCT CODE	COIL LENGTH	MAX. ALLOWABLE PRESSURE AT 73° F
¾" (19 mm)	X2-75160100	100' (30 m)	160 psi (1103 kPa)
¾" (19 mm)	X2-75160300	300' (90 m)	160 psi (1103 kPa)
¾" (19 mm)	X2-75160500	500' (150 m)	160 psi (1103 kPa)
1" (25 mm)	X2-1160100	100' (30 m)	160 psi (1103 kPa)
1" (25 mm)	X2-1160300	300' (90 m)	160 psi (1103 kPa)
1" (25 mm)	X2-1160500	500' (150 m)	160 psi (1103 kPa)
1¼" (32 mm)	X2-125160100	100' (30 m)	160 psi (1103 kPa)
1¼" (32 mm)	X2-125160300	300' (90 m)	160 psi (1103 kPa)
1½" (38 mm)	X2-150160100	100' (30 m)	160 psi (1103 kPa)
1½" (38 mm)	X2-150160300	300' (90 m)	160 psi (1103 kPa)
2" (50 mm)	X2-2160100	100' (30 m)	160 psi (1103 kPa)
2" (50 mm)	X2-2160300	300' (90 m)	160 psi (1103 kPa)

ADS PolyFlex pipe is strong and resistant to many common causes of damage such as vibrations, surface loads and pressure surges. Can be used on landscape and agricultural irrigation systems, residential and commercial water service pipe, well/pump water systems and slurry pipelines.

OTHER COIL LENGTHS AND PRESSURE RATINGS MAY BE AVAILABLE. PLEASE CONTACT YOUR LOCAL ADS REP FOR MORE DETAILS.

# ADS POLYFLEX POTABLE GRADE PIPE

## SIDR 9 (200 PSI) PE4710

SIZE	PRODUCT CODE	COIL LENGTH	MAX. ALLOWABLE PRESSURE AT 73° F
¾" (19 mm)	X2-75200100	100' (30 m)	200 psi (1380 kPa)
¾" (19 mm)	X2-75200300	300' (90 m)	200 psi (1380 kPa)
¾" (19 mm)	X2-75200500	500' (150 m)	200 psi (1380 kPa)
1" (25 mm)	X2-1200100	100' (30 m)	200 psi (1380 kPa)
1" (25 mm)	X2-1200300	300' (90 m)	200 psi (1380 kPa)
1" (25 mm)	X2-1200500	500' (150 m)	200 psi (1380 kPa)
1¼" (32 mm)	X2-125200100	100' (30 m)	200 psi (1380 kPa)
1¼" (32 mm)	X2-125200300	300' (90 m)	200 psi (1380 kPa)
1½" (38 mm)	X2-150200100	100' (30 m)	200 psi (1380 kPa)
1½" (38 mm)	X2-150200300	300' (90 m)	200 psi (1380 kPa)
2" (50 mm)	X2-2200100	100' (30 m)	200 psi (1380 kPa)
2" (50 mm)	X2-2200300	300' (90 m)	200 psi (1380 kPa)



## SIDR 7 (250 PSI) PE4710

SIZE	PRODUCT CODE	COIL LENGTH	MAX. ALLOWABLE PRESSURE AT 73° F
¾" (19 mm)	X2-75250100	100' (30 m)	250 psi (1724 kPa)
¾" (19 mm)	X2-75250300	300' (90 m)	250 psi (1724 kPa)
¾" (19 mm)	X2-75250500	500' (150 m)	250 psi (1724 kPa)
1" (25 mm)	X2-1250100	100' (30 m)	250 psi (1724 kPa)
1" (25 mm)	X2-1250300	300' (90 m)	250 psi (1724 kPa)
1" (25 mm)	X2-1250500	500' (150 m)	250 psi (1724 kPa)
1¼" (32 mm)	X2-125250100	100' (30 m)	250 psi (1724 kPa)
1¼" (32 mm)	X2-125250300	300' (90 m)	250 psi (1724 kPa)
1½" (38 mm)	X2-150250100	100' (30 m)	250 psi (1724 kPa)
1½" (38 mm)	X2-150250300	300' (90 m)	250 psi (1724 kPa)
2" (50 mm)	X2-2250100	100' (30 m)	250 psi (1724 kPa)
2" (50 mm)	X2-2250300	300' (90 m)	250 psi (1724 kPa)

ADS PolyFlex pipe is strong and resistant to many common causes of damage such as vibrations, surface loads and pressure surges. Can be used on landscape and agricultural irrigation systems, residential and commercial water service pipe, well/pump water systems and slurry pipelines.

# ADS POLYFLEX NON-POTABLE GRADE PIPE

## 80 PSI

SIZE	PRODUCT CODE	COIL LENGTH	MAX. ALLOWABLE PRESSURE AT 73° F
½" (13 mm)	580100	100' (30 m)	80 psi (550 kPa)
¾" (19 mm)	7580100	100' (30 m)	80 psi (550 kPa)
¾" (19 mm)	7580300	300' (90 m)	80 psi (550 kPa)
1" (25 mm)	180100	100' (30 m)	80 psi (550 kPa)
1" (25 mm)	180300	300' (90 m)	80 psi (550 kPa)
1¼" (32 mm)	12580100	100' (30 m)	80 psi (550 kPa)
1¼" (32 mm)	12580300	300' (90 m)	80 psi (550 kPa)
1½" (38 mm)	15080100	100' (30 m)	80 psi (550 kPa)
1½" (38 mm)	15080300	300' (90 m)	80 psi (550 kPa)
2" (50 mm)	280100	100' (30 m)	80 psi (550 kPa)
2" (50 mm)	280300	300' (90 m)	80 psi (550 kPa)



## 100 PSI

SIZE	PRODUCT CODE	COIL LENGTH	MAX. ALLOWABLE PRESSURE AT 73° F
½" (13 mm)	5100100	100' (30 m)	100 psi (690 kPa)
½" (13 mm)	5100300	300' (90 m)	100 psi (690 kPa)
¾" (19 mm)	75100100	100' (30 m)	100 psi (690 kPa)
¾" (19 mm)	75100300	300' (90 m)	100 psi (690 kPa)
1" (25 mm)	1100100	100' (30 m)	100 psi (690 kPa)
1" (25 mm)	1100300	300' (90 m)	100 psi (690 kPa)
1¼" (32 mm)	125100100	100' (30 m)	100 psi (690 kPa)
1¼" (32 mm)	125100300	300' (90 m)	100 psi (690 kPa)
1½" (38 mm)	150100100	100' (30 m)	100 psi (690 kPa)
1½" (38 mm)	150100300	300' (90 m)	100 psi (690 kPa)
2" (50 mm)	2100100	100' (30 m)	100 psi (690 kPa)
2" (50 mm)	2100300	300' (90 m)	100 psi (690 kPa)

## (125 PSI)

SIZE	PRODUCT CODE	COIL LENGTH	MAX. ALLOWABLE PRESSURE AT 73° F
½" (25 mm)	50125100	100' (30 m)	125 psi (860 kPa)

ADS PolyFlex pipe is strong and resistant to many common causes of damage such as vibrations, surface loads and pressure surges. Utility grade pipe may be utilized for agricultural, landscape irrigation systems, slurry pipelines and home and commercial usage.

# ADS POLYFLEX WATER SERVICE LINE (CTS)

## SDR 9 (250 PSI) PE4710 (BLUE)

SIZE	PRODUCT CODE	COIL LENGTH	MAX. ALLOWABLE PRESSURE AT 73° F
¾" (19 mm)	X4-75250100	100' (30 m)	250 psi (1724 kPa)
¾" (19 mm)	X4-75250300	300' (90 m)	250 psi (1724 kPa)
¾" (19 mm)	X4-752501000	1000' (300 m)	250 psi (1724 kPa)
1" (25 mm)	X4-1250100	100' (30 m)	250 psi (1724 kPa)
1" (25 mm)	X4-1250300	300' (90 m)	250 psi (1724 kPa)
1" (25 mm)	X4-1250500	500' (150 m)	250 psi (1724 kPa)
1" (25 mm)	X4-12501000	1000' (300 m)	250 psi (1724 kPa)
1¼" (32 mm)	X4-125250100	100' (30 m)	250 psi (1724 kPa)
1¼" (32 mm)	X4-125250300	300' (90 m)	250 psi (1724 kPa)
1¼" (32 mm)	X4-125250500	500' (150 m)	250 psi (1724 kPa)
1½" (38 mm)	X4-150250100	100' (30 m)	250 psi (1724 kPa)
1½" (38 mm)	X4-150250500	500' (150 m)	250 psi (1724 kPa)
2" (50 mm)	X4-2250100	100' (30 m)	250 psi (1724 kPa)
2" (50 mm)	X4-2250300	300' (90 m)	250 psi (1724 kPa)
2" (50 mm)	X4-2250500	500' (150 m)	250 psi (1724 kPa)



## SDR 9 (250 PSI) PE4710 (BLACK)

SIZE	PRODUCT CODE	COIL LENGTH	MAX. ALLOWABLE PRESSURE AT 73° F
¾" (19 mm)	X4-75250100B	100' (30 m)	250 psi (1724 kPa)
¾" (19 mm)	X4-75250300B	300' (90 m)	250 psi (1724 kPa)
¾" (19 mm)	X4-75250500B	500' (150 m)	250 psi (1724 kPa)
¾" (19 mm)	X4-752501000B	1000' (300 m)	250 psi (1724 kPa)
1" (25 mm)	X4-1250100B	100' (30 m)	250 psi (1724 kPa)
1" (25 mm)	X4-1250300B	300' (90 m)	250 psi (1724 kPa)
1" (25 mm)	X4-1250500B	500' (150 m)	250 psi (1724 kPa)
1" (25 mm)	X4-12501000B	1000' (300 m)	250 psi (1724 kPa)
1¼" (32 mm)	X4-125250100B	100' (30 m)	250 psi (1724 kPa)
1¼" (32 mm)	X4-125250300B	300' (90 m)	250 psi (1724 kPa)
1¼" (32 mm)	X4-125250500B	500' (150 m)	250 psi (1724 kPa)
1½" (38 mm)	X4-150250100B	100' (30 m)	250 psi (1724 kPa)
1½" (38 mm)	X4-150250300B	300' (90 m)	250 psi (1724 kPa)
1½" (38 mm)	X4-150250500B	500' (150 m)	250 psi (1724 kPa)
2" (50 mm)	X4-2250100B	100' (30 m)	250 psi (1724 kPa)
2" (50 mm)	X4-2250300B	300' (90 m)	250 psi (1724 kPa)
2" (50 mm)	X4-2250500B	500' (150 m)	250 psi (1724 kPa)



ADS CTS pipe may be used on residential and commercial water service, well/pump water systems, municipal service lines and farm and ranch water systems.

OTHER COIL LENGTHS AND PRESSURE RATINGS MAY BE AVAILABLE. PLEASE CONTACT YOUR LOCAL ADS REP FOR MORE DETAILS.

# ADVANEDGE PIPE & FITTINGS

## 12" AND 18" ADVANEDGE PIPE

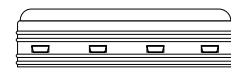
DIAMETER	LENGTH	DESCRIPTION	PRODUCT CODE
12" (300 mm)	100' (30.5 m)	No Fabric	04900100
	100' (30.5 m)	3.5 oz. (99 g) Typar Fabric	04910100
	100' (30.5 m)	4.0 oz. (113 g) Typar Fabric	04930100
	400' (121.9 m)	4.0 oz. (113 g) Typar Fabric	04930400
	112' (34.1 m)	4.0 oz. (113 g) Typar Fabric	04930112
	100' (30.5 m)	Knitted Polyester Sock	04940100
	100' (30.5 m)	4.0 oz. (113 g) Amoco Fabric (Grey)	04950100
18" (450 mm)	100' (30.5 m)	No Fabric	06900100
	100' (30.5 m)	4.0 oz. (113 g) Fabric	06930100
	1600' (487.7 m)	4.0 oz. (113 g) Fabric	06931600
	100' (30.5 m)	4.0 oz. (113 g) Needlepunched Fabric	06950100



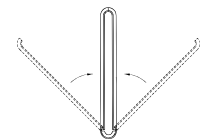
Panel-shaped AdvanEDGE HDPE pipe is utilized for building foundation drainage, golf courses, athletic fields, airport runways and perimeter curtain drains.

## ADVANEDGE FITTINGS

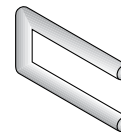
PIPE SIZE	FITTING	PRODUCT CODE
12" (300 mm)	Snap End Cap	1432AA
18" (450 mm)		1632AA
12" (300 mm)	External Split Coupler	1411AA
18" (450 mm)		1611AA
12" (300 mm)	Wye	1480AA
12" (300 mm) and 18" (450 mm)	Coupling Pin (2/pkg)	0840MB
12" (300 mm)	End Outlet	1472AA
18" (450 mm)		1672AA
12" (300 mm)	Side Outlet	1471AA
18" (450 mm)		1671AA
4" (100 mm)	12" (300 mm) Flat Outlet	1432AN
12" (300 mm)	Fabricated Tee	1460AN
18" (450 mm)		1660AN
12" (300 mm)	Fabricated Tee (Horizontal)	1460ANH
18" (450 mm)		1660ANH
12" (300 mm)	Fabricated Tee with Side Outlet	1464ANH
12" (300 mm)	Fabricated Tee with Perf Side Outlet	1464ANH81
12" (300 mm)	Fabricated Cross Tee (Horizontal)	1436ANH
12" (300 mm)		1480AN
18" (450 mm)	Fabricated Wye	1680AN
12" (300 mm)		1480ANH
18" (450 mm)	Fabricated Wye (Horizontal)	1680ANH
12" (300 mm)		1438ANH



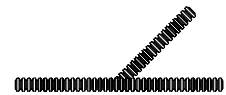
END CAP



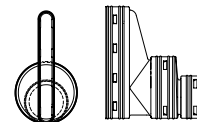
EXTERNAL SPLIT COUPLERS



COUPLING PIN



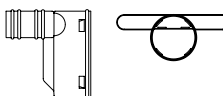
WYE



END OUTLET



SIDE OUTLET



FLAT OUTLET



ADS "Terms and Conditions of Sale" are available on the ADS website, [www.ads-pipe.com](http://www.ads-pipe.com)  
The ADS logo, the Green Stripe, N-12<sup>®</sup>, Bend-A-Drain<sup>™</sup>, PolyFlex<sup>™</sup>, and AdvanEDGE<sup>®</sup> are registered trademarks of Advanced Drainage Systems, Inc. FLEXSTORM<sup>®</sup> is a registered trademark of Inlet & Pipe Protection, Inc. Nyloplast<sup>®</sup> is a registered trademark of Nyloplast. INSERTA TEE<sup>®</sup> is a registered trademark of Inserta Fittings Co.  
© 2016 Advanced Drainage Systems, Inc. #10663 12/16 MH



ADS NATIONAL ACCOUNTS

Advanced Drainage Systems, Inc.  
4640 Trueman Blvd. Hilliard, OH 43026

1-800-733-3735

[www.ads-pipe.com](http://www.ads-pipe.com)

THE MOST **ADVANCED** NAME IN WATER MANAGEMENT SOLUTIONS<sup>™</sup>

