

BIOADVANCED
SCIENCE-BASED SOLUTIONS



ALL ^{IN} ONE

WEED & FEED

MATA LAS MALEZAS DE HOJA ANCHA, EL GARRANCHUELO Y FERTILIZA

1 KILLS LAWN WEEDS**
INCLUDING DANDELION, CLOVER & CHICKWEED

2 FEEDS & GREENS
STRENGTHENS YOUR LAWN

3 KILLS CRABGRASS
PLUS OTHER GRASSY WEEDS**



22-0-4
TREATS UP TO
5,000 sq.Ft

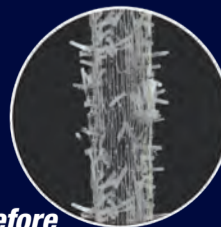
BEFORE

AFTER

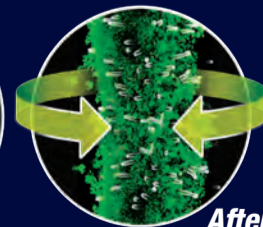
APPLY
SPRING OR FALL
NET WT 12 Lbs (5.45 kg)

Use only on established lawns of the following turf types:
BERMUDAGRASS†, FESCUE, ZOYSIA, KENTUCKY BLUEGRASS, RYEGRASS, BUFFALOGRASS
& SEASHORE PASPALUM †Application to Bermudagrass may cause temporary yellowing or discoloration but full recovery can be expected

**Proprietary
MICRO-FEED ACTION™**



Before



After

**Creates a more nutritious,
resilient root zone
environment**

Active Ingredients:
2,4-D (dichlorophenoxyacetic acid).....0.818%
Quinclorac.....0.419%
Dicamba (3,6-dichloro-o-anisic acid)....0.073%
OTHER INGREDIENTS.....98.690%
TOTAL.....100.000%

STOP-Read This Entire Label Before Use
KEEP OUT OF REACH OF CHILDREN
CAUTION See back panel for additional
precautionary statements
Not for sale, distribution or use in New York State.

**Listed Weeds



READ ENTIRE DIRECTIONS FOR USE BEFORE APPLYING

quick FACTS

- 1 KILLS LAWN WEEDS** INCLUDING DANDELION, CLOVER & CHICKWEED
2 FEEDS & GREENS STRENGTHENS YOUR LAWN
3 KILLS CRABGRASS PLUS OTHER GRASSY WEEDS**

WHEN TO APPLY

Apply Spring, Summer or Fall - when weeds** are actively growing. See Directions for Use for further details

WHERE TO USE

Use only on established lawns of the following turf types: Bermudagrass, Buffalograss, Kentucky Bluegrass, Ryegrass, Fescue, Seashore Paspalum and Zoysia

DO NOT USE ON Bahiagrass, Carpetgrass, Centipedegrass, St. Augustinegrass (including Floratam) or Dichondra

*Application to Bermudagrass may cause temporary yellowing or discoloration but full recovery can be expected

COVERAGE This bag treats 5,000 sq. ft.

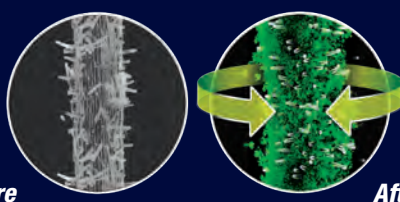


Questions or comments, call toll-free (877) 229-3724 www.BioAdvanced.com



For the full Spanish translation go to www.BioAdvanced.com

Proprietary MICRO-FEED ACTION™



Creates a more nutritious, resilient root zone environment

Table with 2 columns: Ingredient and Percentage. Includes 2,4-D, Quinclorac, Dicamba, and other ingredients.

THIS PRODUCT CONTAINS: 0.00818 lbs 2,4-dichlorophenoxyacetic acid equivalent per pound of product...

DIRECTIONS FOR USE

It is a violation of Federal law to use this product in a manner inconsistent with its labeling.

BEFORE YOU USE • Use this product only on established lawns listed on this label - new lawns may be treated after the fourth mowing. Do not make sequential applications sooner than 30 days.

HOW TO APPLY • Use rotary or drop type spreader to apply granules evenly over the lawn. To be sure you cover lawn areas uniformly, first treat the border of the lawn then fill in the center.

FOR BEST RESULTS WHEN TO APPLY • Apply when - weeds** are small and actively growing - when Crabgrass is emerging and is visible in thin turf areas - temperatures are between 50-90°F, and not above 85°F on Bermudagrass.

MOWING • If the lawn needs mowing, do it 1 to 2 days before (for best results) or 2 days after applying this product.

WATERING • If lawn is dry, water 1 to 2 days before using this product. • Do not water for at least 24 hours after application or apply if rain is expected within 24 hours.

HOW IT WORKS This product contains three proven weed killers to control lawn weeds** & crabgrass, roots and all. And it won't harm your lawn when used as directed.



Do not apply this product in a way that will contact any person or pet, either directly or through drift. Keep people and pets out of the area during application. Do not allow people or pets to enter the treated area until dusts have settled.

INDICACIONES DE USO

Es una violación de la Ley Federal utilizar este producto de manera contraria a la indicada en la etiqueta.

ANTES DE USAR • Use este producto solo en céspedes establecidos que aparecen en la lista en esta etiqueta - céspedes nuevos pueden ser tratados luego de que lo haya podado cuatro veces. No realizar aplicaciones secuenciales con menos de 30 días.

COMO USAR • Usar rociadores del tipo gota o rotativo para aplicar granúlos de manera pareja sobre el césped. Para asegurarse de cubrir el área de manera uniforme, primero tratar el límite del césped y luego completar en el centro.

PARA MEJORES RESULTADOS CUANDO APLICAR • Aplicar cuando - Las malezas** sean pequeñas y están creciendo activamente - Cuando el zacate cangrejo esté apareciendo y sea visible en áreas con césped fino - Las temperaturas estén entre 50-90°F, y no por encima de 85°F en el césped Bermuda.

CORTADO • Si necesita cortar el césped, hágalo 1 o 2 días antes (para mejores resultados) o 2 días después de aplicar este producto. • Los recortes de los tres primeros cortes deben dejarse en las áreas tratadas. No usar los restos de cortes de las áreas tratadas como mantillo o compost alrededor de flores, plantas decorativas, árboles o en jardines de vegetales.

REGADO • Si el césped está seco, riegue 1 a 2 días antes de usar este producto. • No riegue durante como mínimo 24 horas luego de la aplicación o aplique si se espera lluvia dentro de las 24 horas.

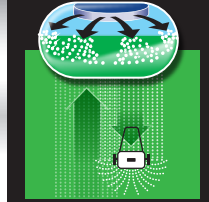
COMO FUNCIONA Este producto contiene tres exterminadores probados de malezas para controlar las malezas que aparecen en la lista** y el zacate cangrejo, raíces y todo. Y no dañará su césped cuando se usa como se indica. Las malezas enumeradas** comienzan a morir en horas y quedan completamente muertas dentro de los 14-28 días. Además, el producto de Acción de micro alimentación™, combinado con el fertilizante, nutre su césped en cada nivel - hojas, raíces y suelo - para que logre un color verde rápidamente y una nutrición duradera.

SPREADER SETTINGS

If your spreader is not listed, please call our Consumer Service Hotline toll-free (877) 229-3724 for help.

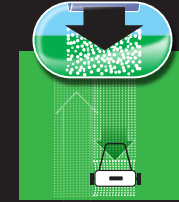
- Settings are approximate. The condition of your spreader, the speed at which you walk and uneven terrain may affect the rate of application. Calibrate your spreader according to manufacturer's directions.
• Tip: 1,000 sq ft = 20 ft x 50 ft
• Do not use a spreader that applies granules in narrow, concentrated or uneven bands. Be sure the spreader works properly and spreads granules evenly.

BROADCAST SPREADER



(Fig A.) Make sure each strip overlaps the previous strip to ensure complete coverage.

DROP SPREADER



(Fig B.) Make sure the wheels overlap the wheel marks in the grass from the previous strip to ensure complete coverage.

SETTING TO DELIVER 2.4lb/1000 sq. ft.

Table with 2 columns: Spreader Model and Setting. Includes Broadcast Spreader and Drop Spreader models.

WEEDS KILLS OVER 200 WEEDS** INCLUDING:

Large table listing various weeds such as Annual Yellow Sweetclover, Aster, Austrian Fieldcress, Barnyardgrass, Bedstraw, Beggarlicks, Bentgrass, Colonial, etc.

ENVIRONMENTAL HAZARDS

This pesticide is toxic to fish and aquatic invertebrates. Do not apply directly to water, to areas where surface water is present, or to intertidal areas below the mean high water mark.

RIESGOS AMBIENTALES Este pesticida es tóxico para los peces y los invertebrados acuáticos. No aplicar directamente en el agua o en áreas donde hay agua superficial presente o en áreas cercanas por debajo de la marca de agua promedio.

PRECAUTIONARY STATEMENTS

CAUTION HAZARDS TO HUMANS & DOMESTIC ANIMALS
• Harmful if swallowed or absorbed through skin.
• Avoid contact with skin, eyes, or clothing.

DECLARACIONES DE PRECAUCIÓN
PRECAUCIÓN RIESGOS PARA SERES HUMANOS Y ANIMALES DOMÉSTICOS
• Puede causar daño si lo traga o lo absorbe por la piel.

FIRST AID

IF SWALLOWED

- Call a poison control center or doctor immediately for treatment advice.
• Have person sip a glass of water if able to swallow.
• Do not induce vomiting unless told to do so by a poison control center or doctor.
• Do not give anything by mouth to an unconscious person.

IF ON SKIN OR CLOTHING

- Take off contaminated clothing.
• Rinse skin immediately with plenty of water for 15 - 20 minutes.
• Call a poison control center or doctor for further treatment advice.

NOTE: When calling poison control center, have this product label accessible. If seeking treatment at an emergency room or doctor's office, bring this product label to show medical personnel.

PRIMEROS AUXILIOS

SI LO TRAGA • Llamar al centro de control de envenenamiento o al médico inmediatamente para asesoramiento sobre el tratamiento. • Hacer que la persona sorba un vaso de agua si puede tragar.

SI CAE EN LA PIEL O ROPA • Quitarse inmediatamente la ropa contaminada. • Lavar la piel inmediatamente con mucha agua durante 15-20 minutos.

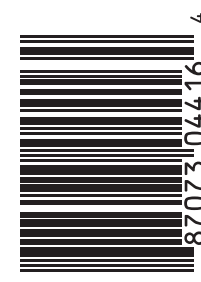
NOTA: Cuando llame al centro de control de envenenamiento, lleve la etiqueta de este producto. Si acude en busca de tratamiento a una sala de emergencia o al consultorio de un médico, lleve esta etiqueta del producto para mostrarle al personal médico.

STORAGE & DISPOSAL Do not contaminate water, food, or feed by storage and disposal

PESTICIDE STORAGE Store in original container in a cool, dry place, out of the reach of children, preferably a locked storage cabinet. Protect from freezing.
PESTICIDE DISPOSAL & CONTAINER HANDLING If Empty: Non-refillable container. Do not reuse or refill this container. Place in trash or offer for recycling if available.

ALMACENAMIENTO Y ELIMINACIÓN

No contaminar alimentos, agua o alimentaciones por almacenamiento o eliminación.
ALMACENAMIENTO DEL PESTICIDA Almacenar en el contenedor original en un lugar seco y fresco, fuera del alcance de los niños, preferentemente en un gabinete de almacenamiento cerrado. Proteger de congelamiento.
ELIMINACIÓN DEL PESTICIDA Y MANIPULACIÓN DEL CONTENEDOR Si está vacío: Contenedor no rellenable. No rellenar o volver a usar este contenedor.



EPA Reg. No. 92564-3
EPA Est. No. indicated by 3rd and 4th digits of the batch number on this package.
BioAdvanced™ Science-Based Solutions
All-in-One Weed & Feed 22-0-4
GUARANTEED ANALYSIS F-2414

NOTICE: Research and testing have determined that the "Directions for Use" are appropriate for the proper use of this product under expected conditions. To the extent permitted by applicable law, the Buyer assumes responsibility for lack of performance or safety if the product is not used according to the directions on this label.

*Money Back Guarantee: If you are not satisfied with this product, we will gladly refund your original purchase price.

**Listed weeds