

TRUSTED SINCE 1926

BONIDE[®]

Insecticidal SUPER Soap

Ready to Use

Proven insect killer

Kills listed insects in minutes

For use on vegetables, citrus,
fruit & nut trees, berries
and ornamentals

ACTIVE INGREDIENT:

Potassium Salts of Fatty Acids..... 0.940%

Spinosad (a mixture of
spinosyn A and spinosyn D)..... 0.005%

OTHER INGREDIENTS:..... 99.055%

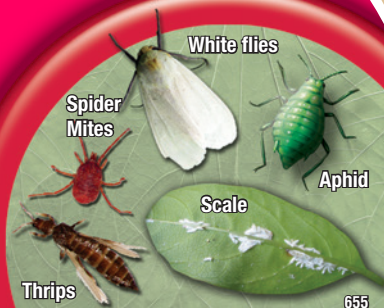
TOTAL:..... 100.000%

EPA Est No. 4-NY-1 EPA Reg. No. 67702-45-4

Keep Out Of Reach Of Children

CAUTION (See Back Panel for Additional
Precautionary Statements and First Aid)

Net Contents 32 FL. OZ. (946 ML.)



655



**FOR ORGANIC
GARDENING**

Insecticidal SUPER Soap

Ready to Use

- ✓ Kills listed insects in minutes
- ✓ For use on vegetables, citrus and berries
- ✓ For Organic Gardening

EPA Reg. No. 67702-45-4 EPA Est. No. 4-NY-1

Buyers Guarantee Limited to Label Claims.

©Bonide Products, Inc. All Rights Reserved

Distributed by: Bonide Products, Inc.

6301 Sutliff Road, Oriskany, NY 13424

Quart



DIRECTIONS FOR USE

It is a violation of Federal law to use this product in a manner inconsistent with its labeling.

For outdoor residential use in home gardens, lawns, and ornamentals and greenhouses (non-commercial). Not for use on plants being grown for sale or other commercial use, or for commercial seed production, or for research purposes.

Please read entire label before using. Use only as directed.

Shake container before use. Apply when listed pests are present. Thoroughly spray all plant parts to wetting, including undersides of leaves. Repeat applications may be made as indicated in the Use Restrictions section.

Apply when the first signs of powdery mildew appear and repeat at 7-10 day intervals. Do not exceed restrictions listed in the Use Restrictions section. This product must come into contact with powdery mildew to be effective. Complete coverage is essential for maximum control.

Do not use on sweet peas, nasturtiums, or delicate ferns. Use with care on new seedlings, transplants, and blooms. Do not spray during full sun. If concerned about sensitivity of plants, apply to individual plants or small areas of plants and wait 2 days to determine if plant damage occurs prior to treatment of larger areas.

PESTS

Insects: This product will control pests such as: adelgids (woolly aphids), ants (excluding fire ants, harvester ants, Pharaoh's ants and carpenter ants), aphids, armyworms, beetles (including Colorado potato beetle), borers, caterpillars, chinch bugs, codling moth, earwigs, fruit flies (including spotted wing *Drosophila*), gypsy moth, lace bugs, leafhoppers, leafminers, leafrollers, loopers, mealybugs, mites, mole crickets, plant bugs, psyllids, sawfly larvae (e.g. pear and rose slugs), scale insects, spider mites, tent caterpillars, thrips, webworms, weevils (including black vine weevil), and whiteflies.

Powdery Mildew: This product provides curative control of powdery mildew.

USE SITES

Vegetables, including: artichokes (globe), asparagus, beans, beets, broccoli, Brussels sprouts, cabbage, cantaloupe, carrots, cauliflower, corn, cucumbers, eggplants, garlic, lettuce, onions, peas, peppers, potatoes, radishes, rutabagas, spinach squash, Swiss chard, tomatoes and turnips; **Fruits**, including: apples, avocados, apricots, cherries, grapes, melons, peaches, plums, citrus, pears; **Berries**, including: strawberries, blackberries, blueberries, boysenberries, loganberries, raspberries; **Herbs**, including: angelica, balm, basil, borage, burnet, chamomile, catnip, chervil (dried), chive, clary, coriander, costmary, cilantro, curry, dillweed, horehound, hyssop, lavender, lemongrass, lovage, marigold, marjoram, mint, nasturtium, parsley, pennyroyal, rosemary, rue, sage, savory, sweet bay, tansy, tarragon, thyme, wintergreen, woodruff and wormwood; **Peanuts, pistachios, Tree nuts**, including: almond, cashew, chestnut, filbert, macadamia nut, pecan, walnut; **Outdoor Ornamentals; Greenhouses (Non-Commercial); Outdoor Container Grown Plants; Lawns; Turf.**

USE RESTRICTIONS

PHI - Do not apply within this many days of harvest.

Timing - Do not make applications less than this many days apart.

Max # of Applications - Do not make more than the specific number of applications for the giving time period.

BERRIES

PHI	Crop	Timing	Max # of Applications
1 day	Caneberries (blackberry, loganberry, raspberry)	5 days	6/year*
	Strawberry	5 days	5/year
3 days	Bushberries (blueberry, currant, elderberry, gooseberry, huckleberry)	6 days	3/crop or 6/year
21 days	Cranberry	7 days	6/year

* year = calendar year

FRUITS

PHI	Crop	Timing	Max # of Applications
1 day	Citrus (grapefruit, lemons, limes, oranges, tangerines)	6 days	3/year*
	Tropical tree fruits (avocado, guava, mango, papaya, passion fruit)	7 days	2/year
	Stone fruits (nectarines, peaches)	7 days	N/A

FRUITS (cont.)

PHI	Crop	Timing	Max # of Applications
7 days	Grape	5 days	5/year
	Stone fruits (cherries, plums, prunes)	7 days	N/A
	Fig	7 days	4/year
	Dates	7 days	N/A
	Pome fruits (apples, crabapples, pears, mayhaw, quince)	10 days	4/year
	Pomegranate	N/A	N/A
	Pineapples (only for use in Hawaii)	7 days	6/year
14 days	Apricots	7 days	N/A
8 weeks	Banana and plantain (California, Florida, Hawaii and Texas only)	7 days	4/crop or 6/year

* year = calendar year

VEGETABLES

PHI	Crop	Timing	Max # of Applications
1 day	Bulb vegetables (onion, garlic, green onion, leek, shallot)	4 days	5/year*
	Brassica (cole) crops (bok choy, broccoli, Brussels sprouts, cabbage, cauliflower, collards, kale)	4 days	6/year
	Corn (sweet corn, popcorn, seed corn)	N/A	6/year
	Cucumber	N/A	6/crop

VEGETABLES (cont.)

PHI	Crop	Timing	Max # of Applications
1 day	Fruiting vegetables (eggplant, pepper, tomato) and okra	4 days	6/year
	Leafy vegetables (except <i>Brassica</i> ; arugula, celery, lettuce, dock, endive, fennel, parsley, rhubarb, spinach, Swiss chard), watercress	4 days	6/year
2 days	Artichoke	7 days	4/crop
3 days	Legume vegetables (beans, peas, blackeyed peas)	5 days	6/crop
	Cucurbits (melons, cantaloupe, pumpkin, squash, watermelon)	5 days	6/crop
	Leaves of root, tuber and legume vegetables	4 days	6/year
	Root vegetables-Carrot, ginseng, parsnip	5 days	4/year
	Root vegetables-Radish, rutabaga, turnip	5 days	3/year
	Tuberous and Corm Vegetables (beets, sugarbeets)	7 days	4/crop
7 days	Potatoes, ginger, sweet potatoes, yams	7 days	4/crop
60 days	Asparagus**	4 days	3/crop

* year = calendar year ** For post harvest protection of ferns only. Do not apply within 60 days of spear harvest. Do not feed treated ferns to meat or dairy animals.

TREE NUTS, PEANUTS AND PISTACHIOS

PHI	Crop	Timing	Max # of Applications
1 day	Tree nuts (almond, cashew, chestnut, filbert, macadamia nut, pecan, walnut), Pistachios	7 days	N/A
3 days	Peanut (not for use in California)	7 days	3/year*

* year = calendar year

HERBS

PHI	Crop	Timing	Max # of Applications
1 day	Herbs (angelica, balm, basil, borage, burnet, chamomile, catnip, chervil (dried), chive, clary, coriander, costmary, cilantro, curry, dillweed, horehound, hyssop, lavender, lemongrass, lovage, marigold, marjoram, nasturtium, parsley, pennyroyal, rosemary, rue, sage, savory, sweet bay, tansy, tarragon, thyme, wintergreen, woodruff and wormwood)	5 days	3/crop or 5/year*
7 days	Mint	4 days	3/crop or 4/year

* year = calendar year

Lawns, Turf, Outdoor Container-Grown Plants and Ornamentals (Herbaceous and Woody)

Uniformly spray foliage to point of runoff. Uniform coverage of upper and lower leaf surfaces is essential for effective insect control. Do not make applications less than 7 days apart.

Greenhouses (non-commercial)

Make localized area treatments of ornamental plants where pest problems are anticipated to occur rather than general area-wide broadcast treatments. Do not apply this product more than 10 times per year inside a greenhouse. If this product is being used for thrips, leafminer, spider mite and/or diamondback moth control, do not apply more than 6 times per year inside a greenhouse.

FIRST AID

IF IN EYES:	Hold eye open and rinse slowly and gently with water for 15-20 minutes. Remove contact lenses, if present, after the first 5 minutes, then continue rinsing eye. Call a poison control center or doctor for treatment advice.
IF ON SKIN OR CLOTHING:	Take off contaminated clothing. Rinse skin immediately with plenty of water for 15-20 minutes. Call a poison control center or doctor for treatment advice.

Have the product container or label with you when calling a poison control center or doctor, or going for treatment. For emergency information contact the National Pesticide Information Center at 1-800-858-7378.

PRECAUTIONARY STATEMENTS

Hazards To Humans And Domestic Animals-CAUTION

Causes moderate eye irritation. Avoid contact with eyes, skin or clothing. Wash thoroughly with soap and water after handling and before eating, drinking, chewing gum, using tobacco, or using the toilet.

Environmental Hazards

This product is toxic to bees exposed to treatment for 3 hours following treatment. Do not apply this pesticide to blooming, pollen-shedding or nectar-producing parts of plants if bees may forage on the plants during this time period. This product is toxic to aquatic invertebrates. To protect the environment, do not allow pesticide to enter or run off into storm drains, drainage ditches, gutters or surface waters. Applying this product in calm weather or when rain is not predicted for the next 24 hours will help to ensure that wind or rain does not blow or wash pesticide off the treatment area.

STORAGE AND DISPOSAL

Do not contaminate water, food or feed by storage or disposal.

PESTICIDE STORAGE: Store this product in its original container and keep in a secure storage area out of reach of children and domestic animals.

CONTAINER DISPOSAL:

If empty: Nonrefillable. Do not reuse or refill this container. Place in trash or offer for recycling if available.

If partly filled: Call your local solid waste agency for disposal instructions. Never place unused product down any indoor or outdoor drain.

WARRANTY

Seller warrants that this product conforms to the chemical description on this label and is reasonably fit for the purposes stated on this label only when used in accordance with directions under normal use conditions. To the fullest extent permitted by law, this warranty does not extend the use of this product contrary to label directions, or under abnormal use conditions, or under conditions not reasonably foreseeable to seller. Seller makes no other warranties, either expresses or implied.

THIS PAGE LEFT INTENTIONALLY BLANK.

THIS PAGE LEFT INTENTIONALLY BLANK.

THIS PAGE LEFT INTENTIONALLY BLANK.