



SuperSleeve™

Product Description

The SuperSleeve™ is a great heavy-duty anchor. It is unique and so practical, it can easily be removed and reinstalled. The torque controlled expansion from the bottom of the hole allows for quick setting with the bolt head flush to the wall. Made of Grade 5 steel bolt therefore increasing the shear load by 30%.

Features & Benefits

- ▶ Grade 5 steel bolt increases shear load by 30%
- ▶ Practical and unique, can easily be removed or reinstalled
- ▶ Torque controlled expansion for quick setting
- ▶ Safe, low profile head flush to the wall
- ▶ Anchors begins expanding from the bottom of the hole at the very first turn

Perfect for:



Satellite dishes, awnings, thermo pumps

Packagings:



Product sizes & Materials

3/8" x 2 Plated Steel

3/8" x 3 Plated Steel

3/8" x 4 Plated Steel

1/2" x 2-3/4" Plated Steel

1/2" x 3-3/4" Plated Steel

Suitable Base Materials

- ▶ Concrete 3000 PSI
- ▶ Brick
- ▶ Hollow Block



Masonry Anchors



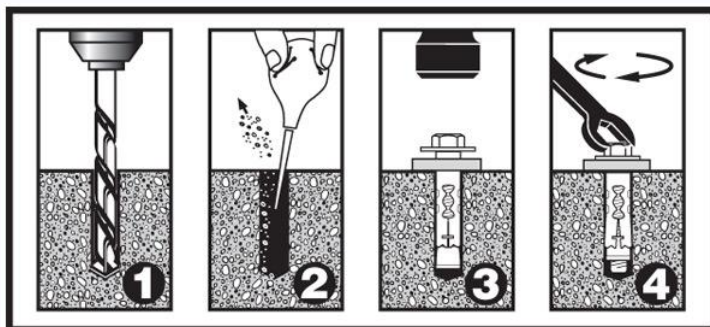
Load Capacities

Material	Size	Drill Size	Min. Embedment	PULL MAX lbs	PULL SAFE lbs	SHEAR MAX lbs	SHEAR SAFE lbs	PULL MAX kg	PULL SAFE kg	SHEAR MAX kg	SHEAR SAFE kg
Concrete 3000 PSI MPA	3/8" x 2	3/8"	2"	2800	700	3000	750	1270	318	1361	340
	3/8" x 3	3/8"	2"	2800	700	3000	750	1270	318	1361	340
	3/8" x 4	3/8"	2"	2800	700	3000	750	1270	318	1361	340
	1/2" x 2-3/4"	1/2"	2-3/4"	5500	1375	6100	1525	2495	624	2767	692
	1/2" x 3-3/4"	1/2"	2-3/4"	5500	1375	6100	1525	2495	624	2767	692

***Always use safe load capacities*

Installation instructions

1. Drill the appropriate size hole into the base material (click on "Technical Specifications" for appropriate drill sizes.).
 - 1.1. Always drill 1/4 inch longer than required.
2. Using an air pump, remove dust and debris from the hole.
3. Insert the SuperSleeve™ through the object you need to affix and insert into the drilled hole. You may need to tap the anchor in, using a hammer.
4. Hand tighten, then using a wrench, turn clockwise until there is a strong resistance (3 to 5 turns will fully set the anchor).



Tools required

