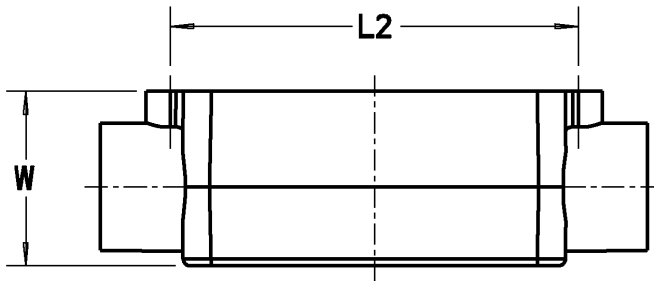
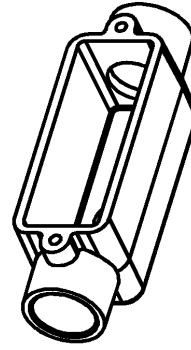
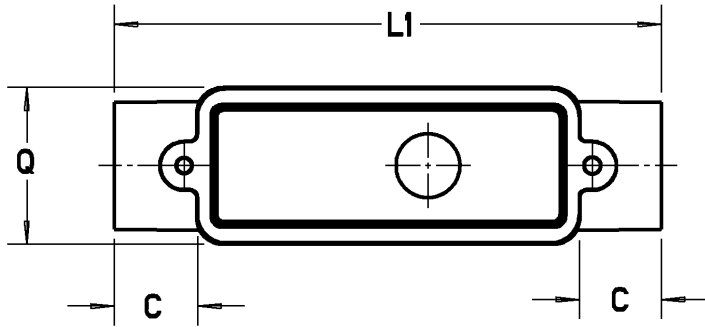


Carlton



PART NO.	SIZE	C	L1	L2	Q	W	CU. IN. VOL.
E987D E987D-CAR E987D-CTN E987DL	1/2"	.69 [17.5]	4.69 [119.1]	3.50 [88.9]	1.35 [34.3]	1.50 [38.1]	4.0
E987E-CAR E987E-CTN E987EL	3/4"	.91 [22.9]	6.88 [174.8]	5.28 [134.1]	1.77 [44.8]	2.02 [51.2]	12.0
E987FB E987F-CAR	1"	.91 [22.9]	6.88 [174.8]	5.28 [134.1]	1.77 [44.8]	2.02 [51.2]	12.0
E987G E987G-CAR	1-1/4"	1.09 [27.7]	8.65 [219.7]	6.80 [172.7]	2.53 [64.3]	2.75 [69.6]	32.0
E987H E987H-CAR	1-1/2"	1.09 [27.7]	8.65 [219.7]	6.80 [172.7]	2.53 [64.3]	2.75 [69.9]	32.0
E987J E987J-CAR	2"	1.16 [29.36]	10.28 [261.1]	8.41 [213.5]	3.17 [80.4]	3.47 [88.1]	63.0

GENERAL NOTES

- ALL DIMENSIONS ARE FOR REFERENCE ONLY.
- DIMENSIONS IN BRACKETS [] ARE IN METRIC UNITS.

REVISIONS

** SEE ERN (****) FOR APPROVAL SIGNATURES & RELEASE DATE.
PROJECT NO: ****

Thomas & Betts
www.tnb.com

DESCRIPTION: **1/2" ACCES FITTING - TYPE "C"**

ORIGINAL PROJECT NO / (ERN NO)

/ ()

SHEET NO:

1 OF 1

REV. NO:

A

DRAWING NO:

WSD-AC04550

THIS DRAWING IS INTENDED FOR DESCRIPTIVE PURPOSES ONLY. AND THE RIGHT IS RESERVED TO DEVIATE FROM ANY OF THE DETAILS SHOWN HEREON.
©2008 Thomas & Betts - Proprietary. All Rights Reserved