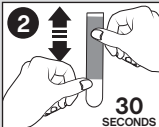
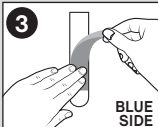


**3M**17305CLR  
command.com**To Apply**

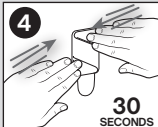
**1**  
Best for **SMOOTH SURFACES**. **CLEAN** surface with rubbing alcohol, wipe gently, let dry. Do not use household cleaners. **SEPARATE** strips.



**2**  
Remove **BLACK** "Wall side" Liner and apply strip to desired location. **PRESS FIRMLY** along the entire strip for 30 seconds.



**3**  
Remove **BLUE** Liner and apply clip to strip. Make sure tab is accessible for future removal.



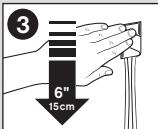
**4**  
**PRESS FIRMLY** along the entire clip for 30 seconds. Wait 1 hour before use.

**To Remove**

**1**  
**NEVER** pull strip towards you.



**2**  
**STRAIGHT DOWN**  
Hold clip gently to prevent clip from snapping fingers. **DO NOT** press clip against wall.



**3**  
**STRETCH STRAIGHT DOWN ALONG WALL AT LEAST 6 INCHES (15 cm)** until strip releases from wall.

**IMPORTANT: Failure to follow instructions carefully may cause damage!**  
**SAVE INSTRUCTIONS** for damage-free removal or visit [command.com](http://command.com)

**For questions, ideas and special offers go to [command.com](http://command.com)**

**CAUTION:**

DO NOT use on windows or with wallpaper. May not adhere well to vinyl surfaces or textured surfaces. DO NOT use for antiques, heirlooms, or other valuable or irreplaceable items. DO NOT hang items over beds.

**NOTE:**

Apply to surfaces **above 50°F (10°C)**. Adhesive could lose adhesion above 105°F (40°C).

Not intended for picture hanging. Instead use Command® Picture Hanging Strips, Sawtooth or Wire-Backed Hangers.

Clips can be reused with Command® Small Clear Strips.

The following statements only apply to products distributed in the USA.

**Limited Warranty:**

This 3M product will be free from defects in material and manufacture. If this product is defective, your exclusive remedy shall be, at 3M's option, replacement of the product or refund of the purchase price.

**Limitation of Liability:**

3M will not be liable for any loss or damage arising from this product, whether direct, indirect, special, incidental or consequential.