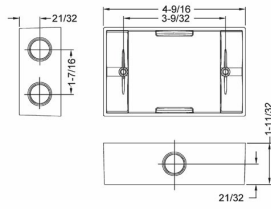




SINGLE GANG EXTENSIONS & ADAPTERS

1-1/2 in. Deep Extension Adapters with Lugs - Six Threaded Outlets - 5-1/4 in. x 3-1/2 in.
N/A

D05



Catalog #: 5400-5

APPLICATIONS

Used to provide additional capacity needed for NEC box fill requirements
Adapters allow installer to add "take-offs" to new boxes/devices

PRODUCT FEATURES

- State-of-the-art powder coat finish provides maximum weatherability and scratch resistance
- Closure plugs provided for two and six outlet styles
- Internal threads and hubs comply with NEMA requirements
- Hubs accept all threaded fittings and threaded conduit
- Multi-lingual instructions in each package
- Includes gasket and mounting hardware
- N/A

UL LISTED

File E195978

CSA

C22.2 No. 18

NEMA

3R Rated

GENERAL PRODUCT INFORMATION

Color: Gray

CONFIGURATION

Number Of Outlets: 6
Gangs: 1

PRODUCT MEASUREMENTS

Depth: 1-1/2 in.
Outlet Size: 1/2 in.
Cubic Inches (cm3): 9.5 (155.7)
Wt. Ea. (Lbs.): 0.610

PACKAGING

Package Type: Carded
Std. Pkg.: 6
Product UPC-A Labeled: Yes
Ship Carton Length (in.): 17.94
Ship Carton Width (in.): 12.56
Ship Carton Height (in.): 2.56
Ctn Weight (Lbs.): 3.66
Pallet Qty: 1296.00
UPC Number: 050169540053
I2of5: 50050169540058