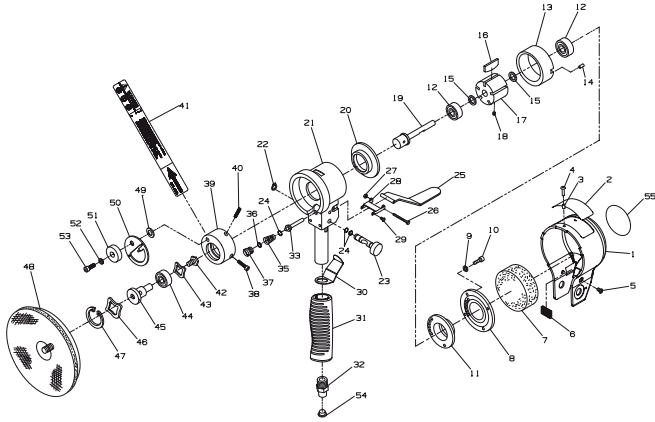


311G Dual Action Sander Exploded Diagram



311G Dual Action Sander Parts List

Item	Part Description	Part Number	Item	Part Description	Part Number
1	Motor Cover Assembly	311G-A109	28	Lever Bracket	311A-274
2	Label	311G-300	29	Screw	311A-638
3	Sleeve	311A-350	30	Second Lever	311A-275
4	Rivet	311A-156	31	Hand Grip	311A-160
5	Screw	311A-78	32	Air Inlet	311A-565
6	Muffler Element	311A-312	33	Valve Stem	311A-161
7	Muffler	311A-311	35	Spring	311A-51
8	Rotor Fixing Plate	311A-118	36	O-Ring	311A-210
9	Washer	311A-207	37	Screw	311A-266
10	Screw	311A-103	38	Screw	311A-16
11	Rear End Plate	311A-12	39	Balance Body	311A-236
12	Rotor Bearing	311A-24	40	Set Screw	311A-454
13	Cylinder	311A-3	41	Warning Label	WARNING-25-99
14	Pin	311A-114	42	Screw	311A-101
15	Shim	311A-25	43	Wave Washer	311A-797
16	Vane Packet (set of 5 vanes)311A-42-5		44	Bearing	311A-97
17	Rotor	311A-53	45	Mounting Shaft	311A-235
18	Screw	311A-55	46	Wave Washer	311A-310
19	Spindle	311A-54	47	Retaining Ring	311A-111
20	Front End Plate	311A-11	48	Sanding Pad	311A-825-6
21	Handle	311A-159	49	Washer	311A-839
22	Retaining Ring	311A-797	50	Drive Plate	311A-800
23	Regulator	311A-165	51	Balance Nut	311A-836
24	O-Ring	311A-65	52	Washer	311A-18
25	Lever.	311A-273	53	Screw	311A-840
26	Lever Screw	311A-170	54	Plug	311A-954
27	Nut	311A-117	55	Label	311A-LABEL-BALANCE

Not Illustrated.

Parts and Maintenance

When the life of the tool has expired, it is recommended that the tool be disassembled, degreased and parts be separated by material so that they can be recycled.

Tool repair and maintenance should only be carried out by an authorized Service Center.

Refer all communications to the nearest **Ingersoll-Rand** Office or Distributor.

Related Documentation

For additional information refer to:

Air Sander Safety Information Manual Form 04580387.

Air Sander Product Information Manual Form 04579637.

Manuals can be downloaded from ingersollrandproducts.com