



SUMMER SURVIVAL 13-0-3 INSECT CONTROL PLUS LAWN FERTILIZER



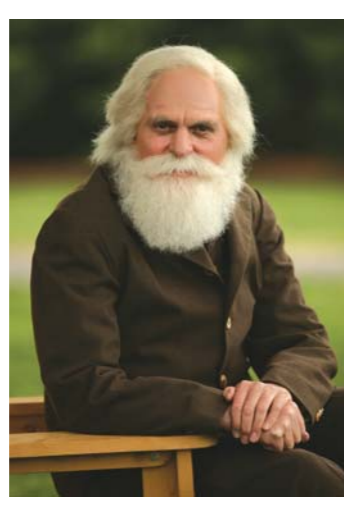
Ask for a FREE copy of my Lawn Care Calendar.

COVERS UP TO 15,000 SQ. FT.

APPLY 3RD IN MY ANNUAL LAWN CARE PROGRAM

JONATHAN GREEN'S ANNUAL LAWN CARE PROGRAM with 4 EASY APPLICATIONS

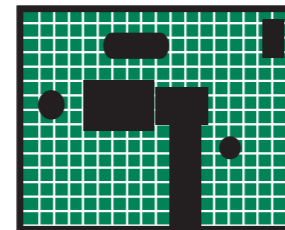
- Apply 1st in my Annual Lawn Care Program in the Spring.** Controls Crabgrass while feeding your lawn.
- Apply 2nd in my Annual Lawn Care Program Spring through Fall.** Controls Weeds when they appear while feeding your lawn.
- Apply 3rd in my Annual Lawn Care Program in the Summer.** Controls insects while feeding your lawn.
- Apply 4th in my Annual Lawn Care Program in the Fall.** Provides nutrients for a greener, thicker lawn.



My Pledge Of Satisfaction

We have made every effort in the formulation of this product to insure that you will be satisfied with the results. If, for any reason, you are not satisfied, please write and describe the problem. Our lawn and turf specialists will make every effort to assure your success.

Jonathan Green



Length (Feet)
Width (Feet)
Total Square Feet
Non-Lawn Areas
Total Square Feet coverage you need

COVERAGE: To determine how much you need, multiply the length of your lawn by its width. This equals your total square footage. Deduct any non-lawn areas (houses, gardens, walkways, etc.) One bag covers up to 15,000 sq. ft.

13-0-3 GUARANTEED ANALYSIS

Total Nitrogen (N)	13.00%
13.00% Urea Nitrogen*	
Soluble Potash (K ₂ O)	3.00%

Primary nutrients derived from: Polymer Coated Sulfur Coated Urea, Urea, Muriate of Potash.

* 5.20% slowly available nitrogen from Sulfur Coated Urea.

13 NITROGEN For a dense green lawn	3 POTASH Vital for growth & drought resistance
Nitrogen is a primary building block for all organisms. It is essential to healthy growth, helps keep plants green and is a critical component of soil structure.	Potash - or Potassium - is essential to the working of every living cell. It plays an important role in plant water utilization and also helps regulate the rate of photosynthesis. Other aspects of plant health influenced by potash include the growth of strong stems, protection from extreme temperatures, and the ability to fight diseases and pests such as weeds and insects.
COMES FROM THE AIR	COMES FROM EVAPORATED OCEANS

FIRST AID
Have the product container or label with you when calling a poison control center or doctor, or going for treatment. You may also contact 1-800-858-7378 for emergency medical treatment information.

IF IN EYES: Hold eye open and rinse slowly and gently with water for 15-20 minutes. Remove contact lenses, if present, after the first 5 minutes, then continue rinsing eye.
Call a poison control center or doctor for treatment advice.

PRECAUTIONARY STATEMENTS
HAZARDS TO HUMANS AND DOMESTIC ANIMALS
KEEP OUT OF REACH OF CHILDREN
CAUTION

Causes moderate eye irritation. Avoid contact with eyes, skin or clothing. Wash thoroughly with soap and water after handling and before eating, drinking, chewing gum, or using tobacco.

ENVIRONMENTAL HAZARDS
This product is extremely toxic to fish and aquatic invertebrates. Do not apply when weather conditions favor drift and runoff from treated areas. Drift and runoff from treated areas may be hazardous to aquatic organisms in neighboring areas. To protect the environment, do not allow pesticide to enter or run off into storm drains, drainage ditches, gutters or surface waters. Applying this product in calm weather when rain is not predicted for the next 24 hours will help to ensure that wind or rain does not blow or wash pesticide off the treatment area. Sweeping any product that lands on a driveway, sidewalk, or street, back onto the treated area of the lawn or garden will help to prevent run off to water bodies or drainage systems.

DIRECTIONS FOR USE
It is a violation of Federal law to use this product in a manner inconsistent with its labeling.
Do not allow children and pets to enter the area until dry.
Do not apply more than 580 lbs. per acre (13.3 lbs. per 1,000 square feet), of this product per year. Not for use on turf being grown for sale or other commercial uses as sod, or for commercial greenhouses, nurseries, commercial seed production or research purposes.

Jonathan Green Summer Survival Insect Control plus Lawn Fertilizer should be applied when insects first appear. Application of this product should be applied evenly with a properly calibrated drop or rotary spreader over the entire turfgrass area at a rate of 3.33 to 6.66 pounds per 1,000 square feet. A uniform application is most desirable and is best achieved by spreading half of the required amount of products over the area and then applying the remaining half with swaths at a right angle to the first. A thorough irrigation of the treated area, immediately after application will provide best results.

Restrictions concerning use near waters.
Do not apply this product within 25 feet of lakes, reservoirs, rivers, permanent streams, marshes, or natural ponds, natural estuaries, and commercial fish ponds.

LAWN AND PERIMETER APPLICATIONS
Jonathan Green Summer Survival Insect Control plus Lawn Fertilizer is intended to prevent and reduce insect entry to homes and businesses. When using this product as directed, apply a 6 to 10 foot wide band to the lawn areas around and adjacent to the structure. Observe and apply the following application rates.

LAWN APPLICATION	Apply 3.33 lbs. per 1,000 sq. ft. 5,000 sq. ft.	Apply 6.66 lbs. per 1,000 sq. ft. 2,500 sq. ft.
Annual Bluegrass, Weevils (Hyperodes Adult), Armyworms, Billbugs (Adult), Black Turfgrass Ataenusa (Adult), Cutworms, Mealybugs, Sod Webworms,	** Ants, ** Centipedes, ** Fire Ants, ** Fleas, Leafhoppers, ** Millipedes, ** Mole Crickets, ** Chinch Bugs, Ticks and Chiggers	

*Jonathan Green Summer Survival Insect Control plus Lawn Fertilizer will provide optimum control of Imported Fire Ants if combined with a mound treatment. A broadcast application of the area to be treated will control foraging worker ants and newly mated queens. In addition a mound treatment at the same time will aid in the destruction of the existing colony. For controlling mounds use a registered pesticide labeled for treatment of fire ant mounds.

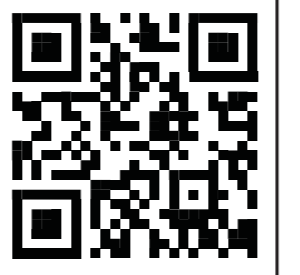
**The highest rate noted on the application table may be required to control Imported Fire Ants as well as Chiggers, Centipedes, Chinch Bugs, Fleas, Millipedes and other foraging ants.

In New York State this product may not be applied to any grass or turfgrass within 100 ft. of a water body (lake, pond, river, stream, wetland, drainage ditch). In New York State do make a single repeat application if there are signs of renewed insect activity, but not sooner than 2 weeks after the first application.



Sign up to receive timely lawn & garden tips www.jonathangreen.com

STORAGE AND DISPOSAL
Do not contaminate water, food, or feed by storage or disposal.
PESTICIDE STORAGE: Store product in its original container in a cool, dry, locked place out of the reach of children and animals.
PESTICIDE DISPOSAL: Wastes resulting from the use of this product may be disposed of on site or at an approved waste disposal facility. Never pour unused product down any indoor or outdoor drain.
CONTAINER DISPOSAL: If empty: Non-refillable container. Do not reuse or refill this container. Offer for recycling, if available. Do not reuse unless required for recycling. If recycling is not available, then dispose of container in a sanitary landfill or, if allowed by State and local authorities, by burning. If burned, stay out of smoke.
If partly filled: Call your local solid waste agency for disposal instructions. Never pour unused product down any indoor or outdoor drain.



Distributed and Guaranteed by: Jonathan Green, Inc. POB 326 Farmingdale, NJ 07727

SP114



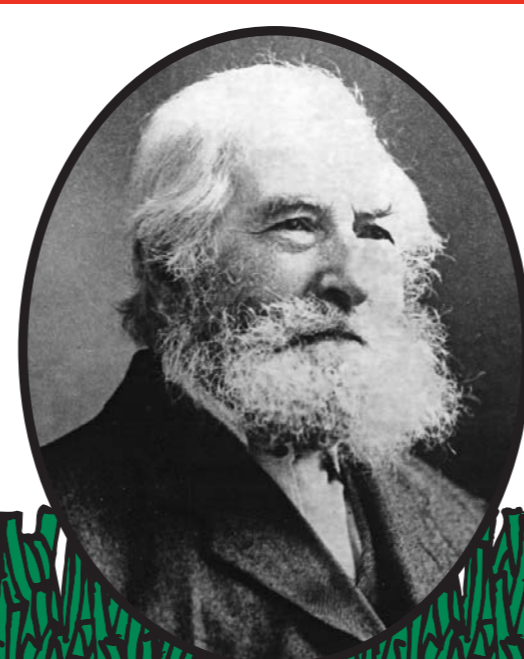
FOR THE BEST LAWN IN TOWN Jonathan Green

SUMMER SURVIVAL 13-0-3 INSECT CONTROL PLUS LAWN FERTILIZER

APPLY 3RD IN MY ANNUAL LAWN CARE PROGRAM



COVERS UP TO 15,000 SQ. FT.



COVERS UP TO 15,000 SQ. FT. (See back tables for rates)

Jonathan Green

FOR THE BEST LAWN IN TOWN

APPLY 3RD IN MY ANNUAL LAWN CARE PROGRAM



COVERS UP TO 15,000 SQ. FT.

SUMMER SURVIVAL 15M

SUMMER SURVIVAL

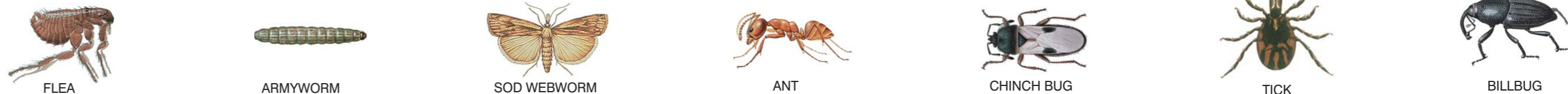
INSECT CONTROL PLUS LAWN FERTILIZER 13-0-3

- PROVIDES INSECT CONTROL IN THE LAWN WHILE FEEDING DESIRABLE GRASSES.
- CONTROLS CHINCH BUGS, SOD WEBWORMS, ANTS, FLEAS, FIRE ANTS AND OTHER PESTS AS LISTED.
- CONTROLLED-RELEASE NITROGEN KEEPS GRASS GREEN LONGER.
- USE FOR PERIMETER INSECT CONTROL APPLICATIONS.

CONTROLS 15+ LISTED INSECTS

NO PHOSPHORUS FORMULA

Sign up to receive timely lawn & garden tips www.jonathangreen.com



49.95 LBS. NET WEIGHT (22.66 Kg)

ACTIVE INGREDIENTS:
Bifenthrin* [CAS 83322-82657] 0.069%
OTHER INGREDIENTS: 98.931%
TOTAL 100.000%
*Cis isomers 97% minimum; trans isomers 3% maximum.

EPA Reg. No. 53883-160-50931
Code on bag indicates manufacturing location.

EPA Est. No. 075527-PA-12, 9198-OH-1M, 9198-OH-2B, 9198-AL-001A, 87245-CAN-001, 32802-MO-1, 8378-IN-1

CAUTION KEEP OUT OF REACH OF CHILDREN See Back Panel For Additional Precautionary Statements

Jonathan Green SUMMER SURVIVAL 13-0-3 INSECT CONTROL PLUS LAWN FERTILIZER

COVERS UP TO 15,000 SQ. FT.

APPLY 3RD IN MY ANNUAL LAWN CARE PROGRAM