

PRICE GROUP	DESCRIPTION	DISCOUNT MULTIPLIER
05	PVC INSERT FITTINGS	



PRODUCTS | PRICE LIST

# PVC INSERT PRESSURE FITTINGS

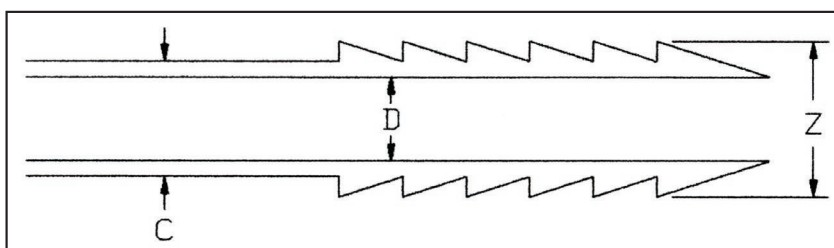
## RECOMMENDED INSTALLATION PROCEDURES

### INSERT (BARBED) CONNECTIONS:

Sizes  $\frac{1}{2}$ ,  $\frac{3}{4}$  and 1 inch - one clamp directly over barbs.

Sizes 1  $\frac{1}{4}$  inch and greater - one clamp directly over barbs plus one additional clamp.

### INSERT DIAMETER DIMENSIONS



### MAXIMUM DIAMETERS

Size	C MAX	D MIN	Z MAX
$\frac{1}{2}$	0.635	0.406	0.665
$\frac{3}{4}$	0.835	0.562	0.865
1	1.055	0.750	1.095
1 $\frac{1}{4}$	1.375	0.995	1.425
1 $\frac{1}{2}$	1.605	1.125	1.665
2	2.065	1.656	2.125
2 $\frac{1}{2}$	2.460	2.062	2.520
3	3.065	2.600	3.125
4	4.030	3.525	4.090





Insert

TEE				
Part No	Size (in)	Ctn Qty	Code	List Price
1401-005	1/2	50	05	2.46
1401-007	3/4	50	05	2.67
1401-010	1	25	05	3.48
1401-012	1 1/4	10	05	5.41
1401-015	1 1/2	10	05	6.14
1401-020	2	10	05	12.13
1401-030	3	5	05	43.65



Insert x Insert x Reducing Insert

REDUCING TEE				
Part No	Size (in)	Ctn Qty	Code	List Price
1401-101	3/4 x 3/4 x 1/2	25	05	3.02
1401-130	1 x 1 x 1/2	25	05	3.53
1401-131	1 x 1 x 3/4	25	05	3.56
1401-166	1 1/4 x 1 1/4 x 1/2	25	05	4.64
1401-167	1 1/4 x 1 1/4 x 3/4	25	05	4.64
1401-168	1 1/4 x 1 1/4 x 1	25	05	4.64
1401-209	1 1/2 x 1 1/2 x 1/2	10	05	8.09
1401-210	1 1/2 x 1 1/2 x 3/4	10	05	8.09
1401-211	1 1/2 x 1 1/2 x 1	10	05	8.09
1401-212	1 1/2 x 1 1/2 x 1 1/4	10	05	8.09
1401-247	2 x 2 x 1/2	10	05	11.51
1401-248	2 x 2 x 3/4	10	05	11.51
1401-249	2 x 2 x 1	10	05	11.51
1401-250	2 x 2 x 1 1/4	10	05	12.05
1401-251	2 x 2 x 1 1/2	10	05	12.42



Insert x Reducing Insert x Reducing Insert

REDUCING TEE				
Part No	Size (in)	Ctn Qty	Code	List Price
1401-094	3/4 x 1/2 x 1/2	25	05	3.32
1401-125	1 x 3/4 x 3/4	25	05	5.75
1401-157	1 1/4 x 1 x 3/4	25	05	6.60
1401-158	1 1/4 x 1 x 1	25	05	6.60
1401-202	1 1/2 x 1 1/4 x 1	10	05	8.29
1401-203	1 1/2 x 1 1/4 x 1 1/4	10	05	8.29



Insert x Insert x Double Helix

TEE				
Part No	Size (in)	Ctn Qty	Code	List Price
1401-099	3/4	25	05	3.83
1401-129	1	25	05	4.18



Slip x Slip x Insert

TRANSITION TEE				
Part No	Size (in)	Ctn Qty	Code	List Price
1102-249	2 x 2 x 1	10	01	6.07*

\*See Schedule 40 Price List; Discounts will vary.



Insert x Insert x Bullhead Insert

BULLHEAD TEE				
Part No	Size (in)	Ctn Qty	Code	List Price
1401-074	1/2 x 1/2 x 3/4	25	05	6.64
1401-102	3/4 x 3/4 x 1	25	05	7.65
1401-132	1 x 1 x 1 1/4	25	05	10.68



Insert x Insert x FPT

COMBINATION TEE				
Part No	Size (in)	Ctn Qty	Code	List Price
1402-005	1/2	50	05	2.67
1402-007	3/4	50	05	4.01
1402-010	1	25	05	4.72
1402-012	1 1/4	10	05	6.94
1402-015	1 1/2	10	05	12.05
1402-020	2	10	05	14.95



Insert x Insert x FPT

COMBINATION TEE				
Part No	Size (in)	Ctn Qty	Code	List Price
1402-101	3/4 x 3/4 x 1/2	25	05	3.32
1402-130	1 x 1 x 1/2	25	05	4.37
1402-131	1 x 1 x 3/4	25	05	4.37
1402-166	1 1/4 x 1 1/4 x 1/2	25	05	5.94
1402-167	1 1/4 x 1 1/4 x 3/4	25	05	6.57
1402-168	1 1/4 x 1 1/4 x 1	25	05	6.94
1402-209	1 1/2 x 1 1/2 x 1/2	10	05	9.15
1402-210	1 1/2 x 1 1/2 x 3/4	10	05	10.86
1402-211	1 1/2 x 1 1/2 x 1	10	05	10.86
1402-212	1 1/2 x 1 1/2 x 1 1/4	10	05	11.12
1402-247	2 x 2 x 1/2	10	05	12.26
1402-248	2 x 2 x 3/4	10	05	12.98
1402-249	2 x 2 x 1	10	05	14.28
1402-251	2 x 2 x 1 1/2	10	05	14.95



Insert x Reducing Insert x Reducing FPT

COMBINATION TEE				
Part No	Size (in)	Ctn Qty	Code	List Price
1402-094	3/4 x 1/2	25	05	4.36
1402-124	1 x 3/4 x 1/2	25	05	5.44
1402-125	1 x 3/4 x 3/4	25	05	6.48
1402-156	1 1/4 x 1 x 1/2	25	05	8.03
1402-157	1 1/4 x 1 x 3/4	25	05	9.40



Insert x Insert x MPT

COMBINATION TEE				
Part No	Size (in)	Ctn Qty	Code	List Price
1403-005	1/2	50	05	3.40
1403-007	3/4	50	05	4.64
1403-010	1	25	05	5.94
1403-012	1 1/4	10	05	7.76
1403-015	1 1/2	10	05	8.66



Insert x Insert

90° ELBOW				
Part No	Size (in)	Ctn Qty	Code	List Price
1406-005	1/2	50	05	2.24
1406-007	3/4	50	05	2.75
1406-010	1	25	05	3.03
1406-012	1 1/4	10	05	3.40
1406-015	1 1/2	10	05	4.01
1406-020	2	10	05	5.61
1406-030	3	8	05	31.92



Insert x Reducing Insert

90° REDUCING ELBOW				
Part No	Size (in)	Ctn Qty	Code	List Price
1406-101	3/4 x 1/2	25	05	2.60
1406-131	1 x 3/4	25	05	3.19
1406-168	1 1/4 x 1	25	05	4.72
1406-212	1 1/2 x 1 1/4	10	05	5.61



Insert x FPT

90° COMBINATION ELBOW				
Part No	Size (in)	Ctn Qty	Code	List Price
1407-005	1/2	50	05	2.53
1407-007	3/4	50	05	2.75
1407-010	1	25	05	3.53
1407-012	1 1/4	10	05	5.23
1407-015	1 1/2	10	05	5.94
1407-020	2	10	05	10.07



Insert x FPT

90° Reducing Combination Elbow				
Part No	Size (in)	Ctn Qty	Code	List Price
1407-101	3/4 x 1/2	50	05	2.60
1407-130	1 x 1/2	25	05	2.75
1407-131	1 x 3/4	25	05	3.19
1407-166	1 1/4 x 1/2	25	05	4.72
1407-167	1 1/4 x 3/4	25	05	4.72
1407-168	1 1/4 x 1	25	05	4.72
1407-211	1 1/2 x 1	10	05	5.38
1407-212	1 1/2 x 1 1/4	10	05	5.84
1407-251	2 x 1 1/2	10	05	9.54



Insert x Slip

90° ELBOW				
Part No	Size (in)	Ctn Qty	Code	List Price
127-957	1 1/2	50	05	10.24



Insert x MPT

90° COMBINATION ELBOW				
Part No	Size (in)	Ctn Qty	Code	List Price
1413-005	1/2	50	05	2.82
1413-007	3/4	50	05	3.92
1413-010	1	25	05	5.13
1413-012	1 1/4	10	05	6.82
1413-015	1 1/2	10	05	9.06
1413-020	2	10	05	14.31



FIPT x Insert

SIDE OUTLET ELBOW				
Part No	Size (in)	Ctn Qty	Code	List Price
1414-101	3/4 x 3/4 x 1/2	50	05	6.48
1414-130	1 x 1 x 1/2	25	05	6.96
1414-131	1 x 1 x 3/4	25	05	6.96



Insert

SIDE OUTLET TEE				
Part No	Size (in)	Ctn Qty	Code	List Price
1416-007	3/4	50	05	8.36
1416-101	3/4 x 1/2	50	05	8.36
1416-130	1 x 1/2	50	05	8.88
1416-131	1 x 3/4	50	05	8.88

CROSS



Insert

CROSS				
Part No	Size (in)	Ctn Qty	Code	List Price
1420-007	3/4	25	05	6.44
1420-010	1	25	05	8.00



Insert x Insert

COUPLING					
Part No	Size (in)	Ctn Qty	Code	List Price	
1429-005	1/2	50	05	1.15	
1429-007	3/4	50	05	1.38	
1429-010	1	50	05	1.45	
1429-012	1 1/4	25	05	2.13	
1429-015	1 1/2	25	05	2.52	
1429-020	2	10	05	4.81	
1429-030	3	10	05	20.97	
1429-040	4	10	05	28.54	



Insert x Reducing Insert

REDUCING COUPLING					
Part No	Size (in)	Ctn Qty	Code	List Price	
1429-101	3/4 x 1/2	50	05	1.86	
1429-130	1 x 1/2	50	05	2.54	
1429-131	1 x 3/4	50	05	1.93	
1429-167	1 1/4 x 3/4	25	05	3.93	
1429-168	1 1/4 x 1	25	05	3.03	
1429-210	1 1/2 x 3/4	25	05	4.81	
1429-211	1 1/2 x 1	25	05	4.59	
1429-212	1 1/2 x 1 1/4	25	05	3.56	
1429-249	2 x 1	10	05	6.48	
1429-250	2 x 1 1/4	10	05	6.03	
1429-251	2 x 1 1/2	10	05	5.74	



Insert x Double Helix

REDUCING COUPLING					
Part No	Size (in)	Ctn Qty	Code	List Price	
1429-099	3/4	50	05	2.48	
1429-129	1	50	05	2.65	

### ADAPTERS



Insert x Spg/Slip

FITTING ADAPTER					
Part No	Size (in)	Ctn Qty	Code	List Price	
1432-010	1 x 1 Spigot (3/4 Slip)	50	05	3.40	
1432-131	3/4 x 1 Spigot (3/4 Slip)	50	05	3.40	



Insert x FPT

FEMALE ADAPTER					
Part No	Size (in)	Ctn Qty	Code	List Price	
1435-005	1/2	50	05	5.03	
1435-007	3/4	50	05	5.44	
1435-101	1/2 x 3/4	50	05	6.45	
1435-010	1	50	05	6.03	
1435-012	1 1/4	25	05	7.40	
1435-015	1 1/2	25	05	9.40	
1435-020	2	10	05	11.95	



Insert x MPT

MALE ADAPTER					
Part No	Size (in)	Ctn Qty	Code	List Price	
1436-005	1/2	50	05	1.14	
1436-007	3/4	50	05	1.38	
1436-010	1	50	05	1.43	
1436-012	1 1/4	20	05	2.26	
1436-015	1 1/2	25	05	2.52	
1436-020	2	10	05	4.84	
1436-030	3	10	05	22.87	
1436-040	4	10	05	31.79	



Reducing MPT x Insert

REDUCING MALE ADAPTER					
Part No	Size (in)	Ctn Qty	Code	List Price	
1436-074	1/2 x 3/4	50	05	3.56	
1436-075	1/2 x 1	50	05	3.71	
1436-102	3/4 x 1	50	05	3.71	
1436-132	1 x 1 1/4	25	05	4.48	
1436-133	1 x 1 1/2	25	05	6.77	
1436-169	1 1/4 x 1 1/2	10	05	6.77	
1436-213	1 1/2 x 2	10	05	8.69	



MPT x Reducing Insert

REDUCING MALE ADAPTER					
Part No	Size (in)	Ctn Qty	Code	List Price	
1436-101	3/4 x 1/2	50	05	3.22	
1436-131	1 x 3/4	50	05	3.32	
1436-167	1 1/4 x 3/4	25	05	3.93	
1436-168	1 1/4 x 1	25	05	4.21	
1436-211	1 1/2 x 1	25	05	5.13	
1436-212	1 1/2 x 1 1/4	25	05	5.13	
1436-251	2 x 1 1/2	10	05	8.63	



MPT x 2" length SP

POOL ADAPTER					
Part No	Size (in)	Ctn Qty	Code	List Price	
1436-170	1 1/4	25	05	6.07	
1436-205	1 1/2 x 1 1/4 x 2	25	05	6.99	



Insert x SP

INSERT ADAPTER (WHITE PVC)					
Part No	Size (in)	Ctn Qty	Code	List Price	
460-007	3/4 x 3/4 SP (1/2 Slip)	50	01	*	
460-010	1 x 1 SP (3/4 Slip)	50	01	*	
460-015	1 1/2 x 1 1/2 SP	25	01	*	

\*See Schedule 40 Price List; Discounts will vary.



Slip x Insert PVC pipe to Flexible pipe

ADAPTER (WHITE PVC)					
Part No	Size (in)	Ctn Qty	Code	List Price	
474-007	3/4	50	01	*	
474-010	1	50	01	*	
474-015	1 1/2	25	01	*	

\*See Schedule 40 Price List; Discounts will vary.



Insert

INSERT PLUG				
Part No	Size (in)	Ctn Qty	Code	List Price
1449-005	1/2	100	05	2.04
1449-007	3/4	100	05	2.13
1449-010	1	50	05	2.86
1449-012	1 1/4	25	05	3.63
1449-015	1 1/2	25	05	3.97
1449-020	2	10	05	6.99

RISER EXTENDER



MPT x FPT

RISER EXTENDER (WHITE PVC)				
Part No	Size (in)	Ctn Qty	Code	List Price
434-005	1/2 x 2 1/16 lg	50	01	*
434-007	3/4 x 1 5/8 lg	50	01	*
434-008	3/4 x 2 15/16 lg	50	01	*
434-020	2 x 2 11/16 lg	25	01	*
439-005	1/2 x 1 3/8 lg	50	01	*

\*See Schedule 40 Price List; Discounts will vary.

# PVC INSERT FITTINGS PRICE LIST



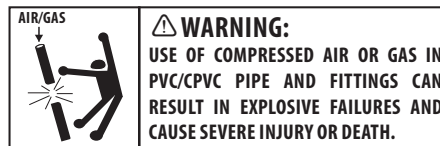
CUSTOMER SERVICE  
Phone: (800) 776-2756 | Fax: (731) 772-0835  
Email: customerservice@lascofittings.com  
www.lascofittings.com

## Limited Warranty

LASCO Fittings, Inc. products are warranted to be free from manufacturing defects in materials and workmanship. They are warranted against rot, rust, and electrolytic corrosion for a period of three years from date of installation. If LASCO products prove defective due to manufacturing defects in material or workmanship during that period, the manufacturer will provide new replacement units of the same type and size. No remedy will be granted under this warranty if LASCO products are not used strictly in accordance with LASCO's directions with respect to use and storage or if the products have been modified in any way.

THE MANUFACTURER'S LIABILITY UNDER EXPRESSED OR IMPLIED WARRANTY OR FOR ANY REASON IS LIMITED TO FURNISHING REPLACEMENT UNITS OR GRANTING A CREDIT FOR DEFECTIVE UNITS. NO LABOR EXPENSE OR CONSEQUENTIAL DAMAGES WILL BE PAID BY LASCO. THIS WARRANTY IS IN LIEU OF ALL OTHER GUARANTEES AND WARRANTIES, EXPRESSED OR IMPLIED, INCLUDING BUT NOT LIMITED TO, WARRANTIES OF MERCHANTABILITY AND FITNESS FOR PURPOSE, EXCEPT FOR ANY WARRANTIES IMPLIED BY LAW FOR NONCOMMERCIAL CONSUMERS. ANY SUCH WARRANTIES ARE LIMITED TO THE DURATION OF THIS WRITTEN WARRANTY.

DO NOT USE LASCO FITTINGS FOR COMPRESSED AIR OR GASES.  
DO NOT TEST PVC PIPING SYSTEMS WITH COMPRESSED AIR OR GASES.  
DO NOT USE FITTINGS WITH LIQUIDS NOT RECOMMENDED BY LASCO.  
MODIFICATIONS OF FITTINGS VOIDS THE WARRANTY.



## STANDARDS AND SPECIFICATIONS – PVC INSERTS

- ASTM D-2609 – Plastic Insert Fittings for Polyethylene (PE) Plastic Pipe.
- ASTM D-1784 – Rigid Poly (Vinyl Chloride) (PVC) Compounds and Chlorinated Poly (Vinyl Chloride) (CPVC) Compounds.
- ASTM F-1970 – Standard Specification for Special Engineered Fittings, Appurtenances or Valves for use in Poly (Vinyl Chloride) (PVC) or Chlorinated Poly (Vinyl Chloride) (CPVC) Systems.
- MATERIAL – LASCO Schedule 40 Fittings are produced from PVC TYPE 1, CELL Classification 12454-B.
- LISTINGS – NSF (National Sanitation Foundation) for potable water services.

## Standard Terms and Conditions of Sale

1. Terms: 2% 35 days, net 45 days.
2. Freight: FOB LASCO warehouses. Prepaid on orders totaling **\$1650 net** for one shipment to single destination within the contiguous United States.
3. Minimum Order: **\$100 net**. Smaller orders billed at this minimum charge.
4. Claims for shipping errors must be made within 15 days to LASCO. Claims for damage or shortages should be directed promptly to the common carrier by the consignee.
5. Returns will be accepted only by prior authorization and if shipped freight prepaid. Returned merchandise subject to a **MINIMUM 25%** handling/restocking charge.
6. Pricing is subject to change without prior notice. However, prior notification will be given in the event of price changes in the period between order placement and scheduled shipment.
7. Offer to sell is not implied by possession of this or other LASCO price lists.