

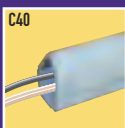
## CORD ORGANIZING

# CORNERMATE™

## Cord Organizers

Hide and organize home entertainment cabling.

CornerMate Cord Organizers are perfect for concealing audio or home theater cords in corners. Peel and press installation is quick and easy. Cover reverses for your choice of concave or convex profile. Paint CornerMate to match your walls. Designed to work with CableMate™ and CordMate® II systems for complete cable management.



60" L x 1 1/2" W x 5/8" H  
1524mm L x 38.1mm W x 16mm H



CornerMate  
Shown with  
CableMate  
baseboard.

### TOOLS YOU'LL NEED:

- Phillips head screwdriver
- Utility knife
- Fine tooth hacksaw

## CORNERMATE parts checklist:



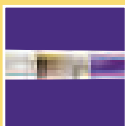
**CMK40 CornerMate™ Cord Cover Kit**  
4 pieces 30" channel - C40  
Transition fittings for use with  
CableMate™ Kit (CMK90) or  
CordMate® II Kit (CMK50)



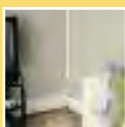
**C40 White 5' Channel**  
Reversible cover, easy  
peel and press installation,  
paintable and stainable.



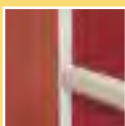
**C43 White 3-Way Fitting**  
For extending cabling from  
vertical to left and right  
horizontal.



**C4050 Home Entertainment  
Cord Cover Kit**  
4 48" sections of CordMate II  
3 48" sections of CornerMate  
2 CordMate II transition fittings  
2 CordMate II couplings



**Home Entertainment  
Cord Cover Kit**



**CornerMate shown with  
CableMate chair rail**



**C451 White CordMate II Connector**  
Transition fitting to go  
from CordMate II channel  
running horizontally to  
CornerMate.

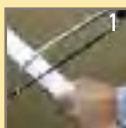


**C47 White 2-Way Fitting**  
For extending cabling from  
vertical to right or left  
horizontal.

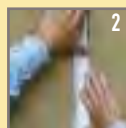


**C491 White CableMate C900 Connector**  
Transition fitting to go from  
CableMate chair rail to  
CornerMate.

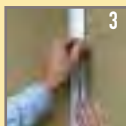
## Easy to install:



1  
Cut CornerMate  
to size.



2  
Mount base  
to wall.



3  
Insert wire.



4  
Snap on cover.