

# JOBSITE SERIES PERRY STYLE™

- 100% fully compatible with Nu-Wave Perry Model 660
- 1,250 Lb load capacity
- Quick and easy height adjustment
- 5/8" Anti-slip deck
- Double locking 5" casters
- Meets OSHA and ANSI

## METALTECH®



**NO TOOLS  
REQUIRED**



**ANTI-SLIP  
DECK**

**OSHA  
ANSI**

**MEETS**



**NU-WAVE  
PERRY 660\*  
COMPATIBLE**

**1,250 lb**

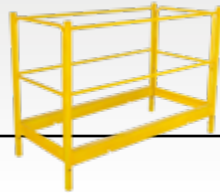
**LOAD CAPACITY**

**BUILT TOUGH FOR  
SAFETY**

# JOBSITE SERIES PERRY STYLE™

## GUARDRAILS SYSTEM

Use for added safety or when stacking units



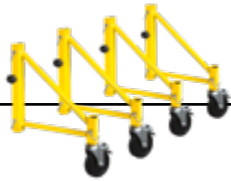
## TOOL TRAY

Safer organized clutter free work area, installs at any rung height



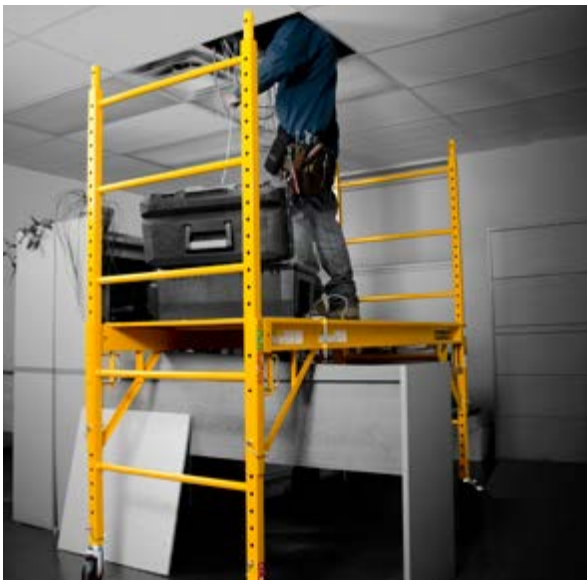
## SET OF 14" OUTRIGGERS WITH CASTER

Use when stacking 2 units



## SET OF 46" OUTRIGGERS WITH CASTER

Use when stacking 3 units



	PERRY STYLE™
ASSEMBLED DIMENSIONS (WXDXH)	73.75 X 29.25 X 78.75 IN.
PACKAGE DIMENSIONS (WXDXH)	75.25 X 30 X 5.25 IN.
WEIGHT	134.6 LB
COMPATIBLE WITH	NU-WAVE PERRY MODEL 660*
LOAD CAPACITY	1,250 LB (567 KG). COMBINED WEIGHT OF USER + MATERIALS
WORKING HEIGHTS	FROM 27 TO 75.75 IN. / 2 IN. INCREMENT ADJUSTABLE HEIGHTS
REACH	12 FT / STACKABLE UP TO 3 UNITS HIGH FOR 24 FT REACH
FINISH	POWDER COATED
PLATFORM	5/8 IN. PLYWOOD THICK WITH PROTECTIVE STEEL EDGE BANDING. ANTI-SLIP
STRUCTURE	1.5 IN. SQUARE TUBE. 16 GAUGE STEEL
CASTERS	5 IN. DOUBLE LOCKING HEAVY DUTY
STANDARDS	ANSI AND OSHA
MODEL	I-CISCPY
UPC	778300200115

\* Nu-Wave Model 660 is a trademark owned by Nu-Wave Manufacturing, LLC.

# METALTECH®

WWW.METALTECH.CO

1 800 363-7587

Metaltech is a registered trademark of Metaltech-Omega inc. | www.metaltech-omega.com | NOTE: Pictures and descriptions in this brochure may differ from actual product. S-CISCPY-NA-EN07