



Rollins
TOOLS FOR THE PROFESSIONAL

Tools for the Professional



Product Catalogue 1 October 2013 – 31 March 2014



No other brick trowel manufacturer can match Marshalltown's commitment to consistent quality. It all starts with our steel; a proprietary formula developed for the unique requirements of a brick trowel. We take our steel and carefully forge and heat treat it into brick trowels using state of the art equipment that we have developed and refined into a unique factory dedicated to making the best brick trowels in the world.

Our handle rise is always set at precisely the same angle. We hold extremely tight tolerances on blade thickness to maintain consistent flexibility and strength on every trowel we sell. We precisely maintain blade chemistry and hardness to guarantee that your brick trowel will perform better than expected.

This all means that every single Marshalltown brick trowel we make is great. Most manufacturers can make a few good brick trowels, and may be even one or two great ones. But they also make bad trowels, and you have to suffer through those bad trowels to get a few good ones. Choosing a Marshalltown brick trowel means that you choose to get a great

Marshalltown, The Premier Line

When you purchase a Marshalltown

Brick Trowel - There are no surprises!

The Professional Choice

Forged from a single piece of high carbon steel

Durasoft®
Comfort Grip

Handle Rise Set for correct "hang" and balance

Blade is taper ground and polished



Brick Trowels

Philadelphia Pattern

- Forged from a single piece of high carbon steel, then heat treated for strength and durability
- Blade is taper ground and polished
- Handle rise is set for correct hang and balance
- Impact area is extra strong
- Four handles to choose from

Part No	Size (Inches)	Size (Millimetres)	Handle	List Price
M1910D	10" x 5"	254 x 127mm	Durasoft	£48.43
M1910	10" x 5"	254 x 127mm	Wood	£41.94
M1910L	10" x 5"	254 x 127mm	Leather	£56.93
M19105D	10½" x 5½"	267 x 133mm	Durasoft	£48.43
M19105	10½" x 5½"	267 x 133mm	Wood	£41.94
M19105P	10½" x 5½"	267 x 133mm	Plastic	£43.61
M1911D	11" x 5½"	279 x 140mm	Durasoft	£48.43
M1911	11" x 5½"	279 x 140mm	Wood	£41.94
M1911P	11" x 5½"	279 x 140mm	Plastic	£43.61
M1911L	11" x 5½"	279 x 140mm	Leather	£56.93
M19115	11½" x 5½"	292 x 146mm	Wood	£41.94
M19115P	11½" x 5½"	292 x 146mm	Plastic	£43.61
M1912D	12" x 6"	305 x 152mm	Durasoft	£48.43
M1912	12" x 6"	305 x 152mm	Wood	£41.94
M1912P	12" x 6"	305 x 152mm	Plastic	£43.61
M1912L	12" x 6"	305 x 152mm	Leather	£56.93



London Pattern

- Forged from a single piece of high carbon steel, then heat treated for strength and durability
- Blade is taper ground and polished
- Handle rise is set for correct hang and balance
- Impact area is extra strong
- Four handles to choose from

Part No	Size (Inches)	Size (Millimetres)	Handle	List Price
M3310D	10" x 4⅜"	254 x 111mm	Durasoft	£48.43
M3310	10" x 4⅜"	254 x 111mm	Wood	£41.94
M33105	10½" x 3¾"	267 x 121mm	Wood	£41.94
M3311D	11" x 4⅞"	279 x 124mm	Durasoft	£48.43
M3311	11" x 4⅞"	279 x 124mm	Wood	£41.94
M33115	11½" x 5"	292 x 127mm	Wood	£41.94
M3312D	12" x 5⅞"	305 x 130mm	Durasoft	£48.43
M3312	12" x 5⅞"	305 x 130mm	Wood	£41.94
M3313D	13" x 5⅞"	330 x 137mm	Durasoft	£49.23
M3313	13" x 5⅞"	330 x 137mm	Wood	£42.83
M3313P	13" x 5⅞"	330 x 137mm	Plastic	£44.46



Wide London Pattern

- Forged from a single piece of high carbon steel, then heat treated for strength and durability
- Blade is taper ground and polished
- Handle rise is set for correct hang and balance
- Impact area is extra strong
- Four handles to choose from

Part No	Size (Inches)	Size (Millimetres)	Handle	List Price
M34105	10½" x 5¾"	267 x 146mm	Wood	£41.94
M34105P	10½" x 5¾"	267 x 146mm	Plastic	£43.61
M3411D	11" x 5¾"	279 x 146mm	Durasoft	£48.43
M3411	11" x 5¾"	279 x 146mm	Wood	£41.94
M3411P	11" x 5¾"	279 x 146mm	Plastic	£43.61
M3411L	11" x 5¾"	279 x 146mm	Leather	£56.93
M3412D	12" x 5¾"	305 x 146mm	Durasoft	£48.43
M3412	12" x 5¾"	305 x 146mm	Wood	£41.94
M3412P	12" x 5¾"	305 x 146mm	Plastic	£43.61
M3412L	12" x 5¾"	305 x 146mm	Leather	£56.93

Pointing Trowels

Philadelphia Pattern

- Forged from a single piece of high carbon steel for unsurpassed strength
- Two handles to choose from

Part No	Size (Inches)	Size (Millimetres)	Handle	List Price
M4545D	4½" x 2¼"	114 x 57mm	Durasoft	£15.91
M4545	4½" x 2¼"	114 x 57mm	Wood	£13.97
M455D	5" x 2¼"	127 x 64mm	Durasoft	£15.91
M455	5" x 2¼"	127 x 64mm	Wood	£13.97
M456D	6" x 2¼"	152 x 70mm	Durasoft	£15.91
M456	6" x 2¼"	152 x 70mm	Wood	£13.97
M457D	7" x 3"	178 x 76mm	Durasoft	£19.88
M457	7" x 3"	178 x 76mm	Wood	£18.15





London Pattern

Forged from a single piece of high carbon steel for unsurpassed strength

Part No	Size (Inches)	Size (Millimetres)	Handle	List Price
M46114D	4" x 2"	102 x 51mm	Durasoft	£15.91
M46115D	5" x 2¼"	127 x 57mm	Durasoft	£15.91
M46116D	6" x 2¼"	152 x 64mm	Durasoft	£15.91



Archaeological Trowel

- Comes complete with a leather holster
- Fitted with a wooden handle

Part No	Size (Inches)	Size (Millimetres)	Handle	List Price
MATH45	4½" x 2½"	112 x 65mm	Wood	£29.77



Ceremonial Trowels

- London Pattern
- Chrome plated brick trowels and pointing trowels
- Excellent for retirement gifts, award presentations or ground breaking ceremonies

Part No	Size (Inches)	Size (Millimetres)	Handle	List Price
M16031	10 x 4½"	154 x 118mm	Durasoft	£216.29
M16033	6 x 2¾"	152 x 70mm	Durasoft	£180.55



Bucket Trowels

- Full sized brick trowel with cut-off blade
- Ensures you are able to use all the mortar from buckets and pans
- MBKTSG755S has a stainless steel blade

Part No	Size (Inches)	Size (Millimetres)	Handle	List Price
M1975	7½"	187mm	Wood	£32.10
MBT75R	7½"	191mm	Soft-Touch	£15.02
MBT825R	8¼"	210mm	Soft-Touch	£15.02
MBKTSG755S	7½"	191mm	Soft-Touch	£16.54



Tile Setting Trowel

- Extra wide heel to allow easy setting of tiles

Part No	Size (Inches)	Size (Millimetres)	Handle	List Price
M57	7" x 4¾"	175mm x 110mm	Wood	£28.70



Margin Trowels

- Square ended solid forged blade
- Used for finishing cement edges
- For window and door frames

Part No	Size (Inches)	Size (Millimetres)	Handle	List Price
M52D	5" x 2"	127 x 50mm	Durasoft	£15.91
M52	5" x 2"	127 x 50mm	Wood	£13.97
M54	5" x 1½"	127 x 38mm	Wood	£13.97
M56	6" x 2"	152 x 50mm	Wood	£15.11



Gauging Trowels

- Round ended solid forged blade
- For mixing/gauging small quantities

Part No	Size (Inches)	Size (Millimetres)	Handle	List Price
M48D	7" x 3¾"	175 x 86mm	Durasoft	£29.30
M48	7" x 3¾"	175 x 86mm	Wood	£28.70



Tuck Pointers

- Pronounced taper for sturdiness & flexibility in confined spaces
- Solid forged blade
- Durasoft handle

Part No	Size (Inches)	Size (Millimetres)	Handle	List Price
M503D	6½" x ¼"	165 x 6mm	Durasoft	£1770
M503	6½" x ¼"	165 x 6mm	Wood	£15.75
M504D	6¾" x ⅜"	172 x 8mm	Durasoft	£1770
M504	6¾" x ⅜"	172 x 8mm	Wood	£15.75
M505D	6¾" x ⅝"	172 x 10mm	Durasoft	£1770
M505	6¾" x ⅝"	172 x 10mm	Wood	£15.75
M506D	6¾" x ½"	172 x 13mm	Durasoft	£1770
M506	6¾" x ½"	172 x 13mm	Wood	£15.75
M507D	6¾" x ⅝"	172 x 16mm	Durasoft	£1770
M507	6¾" x ⅝"	172 x 16mm	Wood	£15.75
M508D	6¾" x ¾"	172 x 19mm	Durasoft	£1770
M508	6¾" x ¾"	172 x 19mm	Wood	£15.75
M509D	6¾" x ⅝"	172 x 22mm	Durasoft	£1770
M509	6¾" x ⅝"	172 x 22mm	Wood	£15.75
M510D	6¾" x 1"	172 x 25mm	Durasoft	£1770
M510	6¾" x 1"	172 x 25mm	Wood	£15.75



Direct Pressure Tuck Pointer

- High shank and lift give plenty of hand room
- Finger guard
- Ergonomic durasoft handle

Part No	Size (Inches)	Size (Millimetres)	Handle	List Price
M608DPD	6¾" x ¾"	171 x 19mm	Durasoft	£19.84



Straight Edgers

- For finishing concrete

Part No	Size (Inches)	Size (Millimetres)	Blade	List Price
M36D	6" x 3"	150mm x 76mm	Carbon Steel	£9.36
M120D	8" x 6"	200mm x 150mm	Carbon Steel	£11.83
M192SSD	10" x 4"	250mm x 100mm	Stainless Steel	£15.57



Curved Edgers

- For finishing concrete

Part No	Size (Inches)	Size (Millimetres)	Blade	List Price
M136D	6" x 3"	150mm x 76mm	Carbon Steel	£9.36
M176D	6" x 3"	150mm x 76mm	Carbon Steel	£9.23
M155SSD	6" x 4"	150mm x 100mm	Stainless Steel	£12.51
M156SSD	6" x 4"	150mm x 100mm	Stainless Steel	£12.59



Narrow Edger

- For finishing concrete

Part No	Size (Inches)	Size (Millimetres)	Blade	List Price
M513N	2" x 6"	50mm x 150mm	Stainless Steel	£9.57

Permashape Finishing Trowels

Permashape Trowels

The Facts

The Professional Choice

Aluminium alloy Xtralite mounting is lightweight but very strong

Durasoft® Comfort Grip

Broken-in-shape eliminates line and ripple marks right from the start

PermaShape guarantees trowel will maintain it's original broken in shape

Beginning finishers can do a better job and be more productive sooner



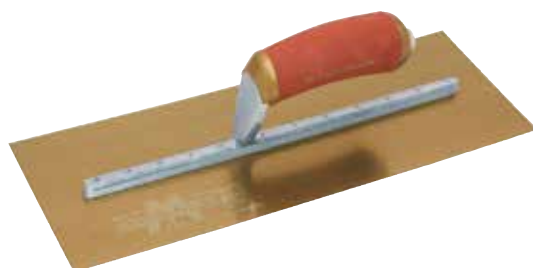
Carbon Steel Blade

Part No	Size (Inches)	Size (Millimetres)	Handle	List Price
MPB145D	14" x 5"	350mm x 127mm	Durasoft	£47.69
MPB66D	16" x 4"	400mm x 100mm	Durasoft	£50.79
MPB81D	18" x 4"	450mm x 100mm	Durasoft	£54.73
MPB165D	16" x 5"	400mm x 127mm	Durasoft	£51.55
MPB815D	18" x 5"	450mm x 127mm	Durasoft	£55.15
MPB205D	20" x 5"	500mm x 127mm	Durasoft	£57.71



Stainless Steel Blade

Part No	Size (Inches)	Size (Millimetres)	Handle	List Price
MPB13SS	13" x 5"	325mm x 125mm	Shaped Wood	£54.59
MPB13SSD	13" x 5"	325mm x 127mm	Durasoft	£59.61
MPB14SS	14" x 5"	350mm x 125mm	Shaped Wood	£57.26
MPB14SSD	14" x 5"	350mm x 127mm	Durasoft	£62.87



Gold Stainless Steel Blade

Part No	Size (Inches)	Size (Millimetres)	Handle	List Price
MPB1GSD	11" x 4½"	280mm x 113mm	Durasoft	£51.45
MPB7GSD	12" x 5"	300mm x 127mm	Durasoft	£53.12
MPB13GSD	13" x 5"	325mm x 127mm	Durasoft	£54.66
MPB145GSD	14" x 5"	350mm x 127mm	Durasoft	£57.71
MPB165GSD	16" x 5"	400mm x 127mm	Durasoft	£61.61



Flat Gold Stainless Steel Blade

- Guaranteed to stay flat after use

Part No	Size (Inches)	Size (Millimetres)	Handle	List Price
M13GSFPD	13" x 5"	325mm x 127mm	Durasoft	£54.66



Plasterers Finishing Trowels

- Highest grade hardened and tempered blade, properly shaped
- Aluminium alloy Xtralite mounting, lightweight and very strong
- Beveled work edges prevent surface aggregate popping
- Available in a variety of finishes and handle types

Spring Steel Blade

Part No	Size (Inches)	Size (Millimetres)	Handle	List Price
MXS1D	11" x 4½"	280mm x 113mm	Durasoft	£39.21
MX1	11" x 4½"	280mm x 113mm	Straight Wood	£35.06
MXS1	11" x 4½"	280mm x 113mm	Shaped Wood	£35.06
MX2	11½" x 4½"	280mm x 113mm	Straight Wood	£35.06
MXS2	11" x 4½"	280mm x 113mm	Shaped Wood	£35.06
MXS3	11½" x 4¾"	288mm x 119mm	Shaped Wood	£35.06
MX4	11½" x 4¾"	288mm x 119mm	Straight Wood	£35.06
MXS62D	12" x 4"	305mm x 100mm	Durasoft	£39.00
MXS7D	12" x 5"	300mm x 127mm	Durasoft	£39.78
MXS7	12" x 5"	300mm x 127mm	Shaped Wood	£35.63
MXS13D	13" x 5"	325mm x 127mm	Durasoft	£40.95
MXS13	13" x 5"	325mm x 127mm	Shaped Wood	£36.81
MXS73D	14" x 4¾"	350mm x 119mm	Durasoft	£42.20
MXS60D	16" x 3"	406mm x 76mm	Durasoft	£46.40
MXS66D	16" x 4"	406mm x 100mm	Durasoft	£46.70
MXS165D	16" x 5"	400mm x 127mm	Durasoft	£47.48
MXS77D	18" x 4½"	450mm x 113mm	Durasoft	£50.58
MXS245D	25" x 5"	610mm x 127mm	Durasoft	£54.58

Stainless Steel Blade

Part No	Size (Inches)	Size (Millimetres)	Handle	List Price
MXS1DSS	11" x 4½"	280mm x 113mm	Durasoft	£46.44
MXS1SS	11" x 4½"	280mm x 113mm	Shaped Wood	£42.39
MXS3SS	11½" x 4¾"	288mm x 119mm	Shaped Wood	£42.39
MXS62SSD	12" x 4"	305mm x 100mm	Durasoft	£47.92
MXS13DSS	13" x 5"	325mm x 127mm	Durasoft	£49.60
MXS13SS	13" x 5"	325mm x 127mm	Shaped Wood	£45.52
MXS73DSS	14" x 4¾"	350mm x 119mm	Durasoft	£52.52
MXS66SSD	16" x 4"	400mm x 100mm	Durasoft	£54.94
MXS77DSS	18" x 4½"	450mm x 113mm	Durasoft	£67.90
MXS25SSD	20" x 5"	500mm x 127mm	Durasoft	£67.34

Gold Stainless Steel Blade

Part No	Size (Inches)	Size (Millimetres)	Handle	List Price
MXS1GS	11" x 4½"	280mm x 113mm	Shaped Wood	£43.21
MXS13GSD	13" x 5"	325mm x 127mm	Durasoft	£50.58
MXS13GS	13" x 5"	325mm x 127mm	Shaped Wood	£46.40
MXS73GSD	14" x 4¾"	350mm x 119mm	Durasoft	£53.56
MXS64GSD	14" x 4"	350mm x 100mm	Durasoft	£52.19
MXS64GS	14" x 4"	350mm x 100mm	Shaped Wood	£48.03
MXS145GD	14" x 5"	365mm x 127mm	Durasoft	£53.56
MXS66GSD	16" x 4"	400mm x 100mm	Durasoft	£55.98
MXS66GS	16" x 4"	400mm x 100mm	Shaped Wood	£51.81
MXS205GD	20" x 5"	508mm x 127mm	Durasoft	£68.65
MXS205GS	20" x 5"	500mm x 127mm	Shaped Wood	£64.49
MXS815GD	18" x 5"	450mm x 127mm	Durasoft	£64.38

Cement Finishing Trowels

- Highest Grade hardened and tempered blade, properly shaped
- Aluminium alloy Xtralite mounting, lightweight and very strong
- Bevelled work edges prevent surface aggregate from popping
- Available in a variety of finishes and handle types

Spring Steel Blade

Part No	Size (Inches)	Size (Millimetres)	Handle	List Price
MXS62	12" x 4"	300mm x 100mm	Shaped Wood	£34.89
MXS64	14" x 4"	350mm x 100mm	Shaped Wood	£38.22
MXS73	14" x 4¾"	350mm x 119mm	Shaped Wood	£38.10
MXS66	16" x 4"	400mm x 100mm	Shaped Wood	£42.53
MX64	14" x 4"	350mm x 100mm	Straight Wood	£38.22
MX66	16" x 4"	400mm x 100mm	Straight Wood	£42.53
MXS81	18" x 4"	450mm x 100mm	Shaped Wood	£46.44
MXS77	18" x 4½"	450mm x 113mm	Shaped Wood	£46.44
MXS205	20" x 5"	500mm x 127mm	Shaped Wood	£49.46

Stainless Steel Blade

Part No	Size (Inches)	Size (Millimetres)	Handle	List Price
MXS64SS	14" x 4"	350mm x 100mm	Stainless Steel	£47.12
MXS73SS	14" x 4¾"	350mm x 119mm	Stainless Steel	£48.47



Drywall Finishing Trowels

- Blades have slight concave bow helping to feather mud and make perfect drywall joints
- Diamond shank design, keeps the handle from twisting

Spring Steel Blade

Part No	Size (Inches)	Size (Millimetres)	Handle	List Price
M12D	11" x 4½"	280mm x 113mm	Durasoft	£39.78
M12	11" x 4½"	280mm x 113mm	Wood	£35.63
M12A	14" x 4½"	350mm x 113mm	Wood	£38.95

Stainless Steel Blade

Part No	Size (Inches)	Size (Millimetres)	Handle	List Price
M12SSD	11" x 4½"	280mm x 113mm	Durasoft	£47.18
M12ASSD	14" x 4½"	350mm x 113mm	Durasoft	£51.50

Duraflex Trowels

- Guaranteed to maintain original flat shape
- Flat flexible blade makes applications easier with more consistent finish
- Excellent for EIFS applications
- Long or short mounting
- High grade hardened and tempered golden stainless steel blade
- Properly sharpened and fastened with stainless steel rivets to withstand pressure of hard trowelling

Part No	Size (Inches)	Size (Millimetres)	Handle	List Price
M4471DFD	14" x 5"	350mm x 127mm	Durasoft	£51.31
M4681DFDL	13" x 5"	325mm x 127mm	Durasoft	£49.27
M4683DFDL	14" x 5"	350mm x 127mm	Durasoft	£52.59
M4713DFDL	16" x 5"	400mm x 127mm	Durasoft	£54.75

Texturing Trowel

- Unique composition blade material
- Retains flat shape
- Can be used for texturing or embedding mash in EIFS applications

Part No	Size (Inches)	Size (Millimetres)	Handle	List Price
M2161	11½" x 5"	288mm x 127mm	Plastic	£23.60

Concrete Finishing Trowels

Blued Steel Blade

- Highest Grade blue steel
- Aluminium alloy Xtralite mounting is lightweight, but very strong

Part No	Size (Inches)	Size (Millimetres)	Handle	List Price
MXS81BD	18" x 4"	450mm x 100mm	Durasoft	£47.73
MXS20B	20" x 4"	500mm x 100mm	Shaped Wood	£46.40
MXS20BD	20" x 4"	500mm x 100mm	Durasoft	£50.27
MXS245BD	25" x 5"	610mm x 127mm	Durasoft	£51.38

QLT Finishing Trowels

- Cast aluminium mounting riveted to tempered, polish steel blade

Part No	Size (Inches)	Size (Millimetres)	Handle	List Price
MFT377R	13" x 5"	325mm x 127mm	Soft Grip	£21.61



Midget Trowels

- M11SSD Stainless Steel
- M11 Spring Steel

Part No	Size (Inches)	Size (Millimetres)	Handle	List Price
M11SSD	8" x 3"	200mm x 76mm	Durasoft	£38.52
M11	8" x 3"	200mm x 76mm	Shaped Wood	£31.76



Round End Trowels

- Spring Steel
- Rounded End

Part No	Size (Inches)	Size (Millimetres)	Handle	List Price
MXS66RED	16" x 4"	400mm x 100mm	Durasoft	£47.88
MXS66RE	16" x 4"	400mm x 100mm	Shaped Wood	£43.74
MXS81RE	18" x 4"	450mm x 100mm	Shaped Wood	£47.12
MXS205RD	20" x 5"	500mm x 127mm	Durasoft	£55.70



Venetian Trowels

- Stainless Steel blade with bevelled edges and radius corners
- Ideal for achieving polished venetian look

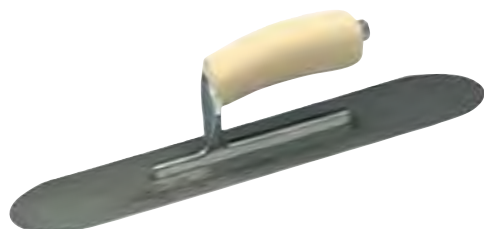
Part No	Size (Inches)	Size (Millimetres)	Handle	List Price
MXS875SS	8¾" x 3¾"	222mm x 95mm	Shaped Wood	£42.39
MXS11SS	11" x 3¾"	280mm x 100mm	Shaped Wood	£44.95



Swimming Pool Trowels

Spring Steel

Part No	Size (Inches)	Size (Millimetres)	Handle	List Price
MSP10	10" x 3"	250mm x 76mm	Shaped Wood	£34.87
MSP14	14" x 4"	350mm x 100mm	Shaped Wood	£37.81
MSP16D	16" x 4½"	400mm x 113mm	Durasoft	£46.25
MSP16	16" x 4½"	400mm x 113mm	Shaped Wood	£42.11
MSP815	18" x 5"	450mm x 127mm	Shaped Wood	£45.55
MSP205	20" x 5"	500mm x 127mm	Shaped Wood	£48.84



Stainless Steel

Part No	Size (Inches)	Size (Millimetres)	Handle	List Price
MSP14SS	14" x 4"	350mm x 100mm	Shaped Wood	£45.73



Gold Stainless Steel

Part No	Size (Inches)	Size (Millimetres)	Handle	List Price
MSP14GSD	14" x 4"	350mm x 100mm	Durasoft	£49.63
MSP16GSD	16" x 4½"	400mm x 113mm	Durasoft	£54.66



Blued Steel

Part No	Size (Inches)	Size (Millimetres)	Handle	List Price
MPT164B	16" x 4½"	400mm x 113mm	Shaped Wood	£23.10
MPT205B	20" x 5"	500mm x 127mm	Shaped Wood	£27.35



- Steel Blade
- Blade Length 11"x4½" (280mm x 113mm)

Square Notch

Part No	Notch Size (Inches)	Notch Size (Millimetres)	Handle	List Price
M5779S	7/32" x 3/32"	5.5mm x 4mm	Shaped Wood	£16.44
M702S	¼" x ¼"	6mm x 6mm	Shaped Wood	£16.44
M703S	3/16" x 3/16"	3mm x 3mm	Shaped Wood	£16.44
M775S	½" x ½"	13mm x 13mm	Shaped Wood	£16.44
M702SD	¼" x ¼"	6mm x 6mm	Durasoft	£18.83
M775SD	½" x ½"	13mm x 13mm	Durasoft	£18.83



V Notch

Part No	Notch Size (Inches)	Notch Size (Millimetres)	Handle	List Price
M701S	7/32" x 3/32"	5.5mm x 4mm	Shaped Wood	£16.44
M705S	1/8" x 3/32"	3mm x 2.5mm	Shaped Wood	£18.83
M701SD	7/32" x 3/32"	5.5mm x 4mm	Durasoft	£18.83



U Notch

Part No	Notch Size (Inches)	Notch Size (Millimetres)	Handle	List Price
M704S	3/32" x 1/8"	2.5mm x 3mm	Wood	£16.44



U Notch

- Blade Length 16"x4" (400mm x 100mm)

No	Notch Size (Inches)	Size (Millimetres)	Handle	List Price
M709SD	¼" x 3/8"	6mm x 10mm	Durasoft	£24.66
M710SD	¼" x ¼"	6mm x 6mm	Durasoft	£24.66
M711SD	½" x ½"	13mm x 13mm	Durasoft	£24.66



Scratcher Trowel

- Notched on 3 sides

Part No	Size (Inches)	Size (Millimetres)	Handle	List Price
MSC553	12" x 4½"	300mm x 114mm	Soft Grip	£14.64



Scarifier

- 3" x ¼" Blued Steel Tines to scratch plaster undercoat

Part No	Size (Inches)	Size (Millimetres)	Handle	List Price
M722	8"	200mm	Plastic	£11.81
M723	12"	300mm	Plastic	£13.04



Magnesium Floats
Square Ended

Part No	Size (Inches)	Size (Millimetres)	Handle	List Price
M142D	12" x 3⅞"	300mm x 78mm	Durasoft	£26.62
M142	12" x 3⅞"	300mm x 78mm	Shaped Wood	£20.94
M142RW	12" x 3⅞"	300mm x 78mm	Rounded Wood	£20.94
M145D	16" x 3⅞"	400mm x 78mm	Durasoft	£30.89
M145	16" x 3⅞"	400mm x 78mm	Shaped Wood	£25.19
M148RW	16" x 3⅞"	400mm x 78mm	Rounded Wood	£24.45
M146D	20" x 3⅞"	500mm x 78mm	Durasoft	£36.36
M146	20" x 3⅞"	500mm x 78mm	Shaped Wood	£30.72
M146RW	20" x 3⅞"	500mm x 78mm	Rounded Wood	£30.72



Round Ended

Part No	Size (Inches)	Size (Millimetres)	Handle	List Price
M143D	16" x 3⅞"	400mm x 78mm	Durasoft	£32.14



Resin Hand Floats

- Works the slab like a wood float but lasts much longer
- Ideal for working colour hardeners into concrete.
- Laminated Canvas Resin

Square Ended

Part No	Size (Inches)	Size (Millimetres)	Handle	List Price
M4500D	14" x 3½"	350mm x 89mm	Durasoft	£24.91



Round Ended

Part No	End Sizes (Inches)	End Sizes (Millimetres)	Handle	List Price
M4499RD	16" x 3½"	400mm x 89mm	Durasoft	£28.49



Plaster Darbies
Mahogany

- Blade tapers from 3½" to 2" (88mm to 50mm)

Part No	Size (Inches)	Size (Millimetres)	Handle	List Price
M150	28"	711mm	Mahogany	£41.46



Magnesium

- Double serrated blades with dual raised edges to increase strength and durability

Part No	Size (Inches)	Size (Millimetres)	Handle	List Price
M14884	48"	1219mm	Wood	£36.05



Magnesium

- Lightweight and durable
- M4626D has a knob for control

Part No	Size (Inches)	Size (Millimetres)	Handle	List Price
M4623D	30" x 3 ³ / ₈ "	762mm x 79mm	Durasoft	£44.90
M4626D	36" x 3 ³ / ₈ "	914mm x 79mm	Durasoft	£57.60



Wooden Float

- For levelling and smoothing concrete

Part No	Size (Inches)	Size (Millimetres)	Handle	List Price
M44	12" x 5"	300mm x 125mm	Wood	£11.29



Trowel Handles

Brick Trowel Handles

- Will fit replace any wood or plastic trowel handle

Part No	Size (Inches)	Size (Millimetres)	Material	List Price
M14	1 ³ / ₄ " diameter	31mm diameter	Hardwood	£3.68
M14P	1 ¹ / ₂ " diameter	38mm diameter	Plastic	£7.90



Hawk Handles

- Will fit all Marshalltown Hawks except M951/MPH694/MAH659
- With bolt for secure fastening

Part No	Size (Inches)	Size (Millimetres)	Material	List Price
M412W	N/A	N/A	Wood	£8.03
M412D	N/A	N/A	Durasoft	£6.45



Finishing Trowel Handles

- Replacement Finishing Trowel Handles
- Will fit all Marshalltown finishing trowels

Part No	Size (Inches)	Size (Millimetres)	Material	List Price
M401	1 ⁵ / ₈ " diameter	41mm diameter	Straight Wood	£5.79
M402	1 ⁹ / ₁₆ " diameter	39mm diameter	Curved Wood	£5.79
M401D	1 ⁵ / ₈ " diameter	41mm diameter	Straight Durasoft	£8.24
M402D	1 ⁹ / ₁₆ " diameter	39mm diameter	Curved Durasoft	£8.24



Brick Trowel Bumper

- Replacement for use with Durasoft brick trowels

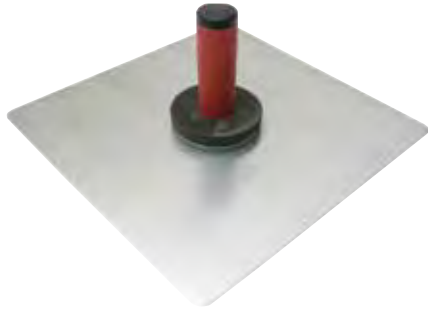
Part No	List Price
M19104	£5.31



Hawk Callous Protector

- Fits all hawks

Part No	List Price
M0	£1.88



Hawks

Aluminium Hawk

- Durasoft handle
- Scored blade
- Callous preventer

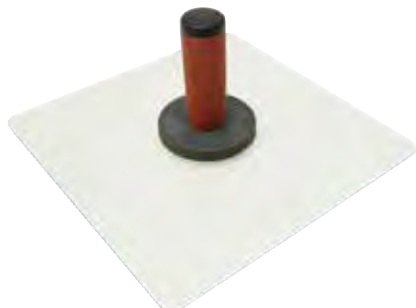
Part No	Size (Inches)	Size (Millimetres)	Blade	List Price
M1	13" x 13"	325mm x 325mm	Aluminium	£26.62
M2	13½" x 13½"	338mm x 338mm	Aluminium	£27.76
M3	10" x 10"	250mm x 250mm	Aluminium	£22.15
M5	12" x 12"	300mm x 300mm	Aluminium	£24.30
M6D	14" x 14"	350mm x 350mm	Aluminium	£28.92



Adjustable Aluminium Hawk

- Adjustable handle allows more forearm support
- Oversized hard-rolled aluminium blade for increased capacity
- Smooth edges, rounded corners
- Durasoft handle
- Callous preventer

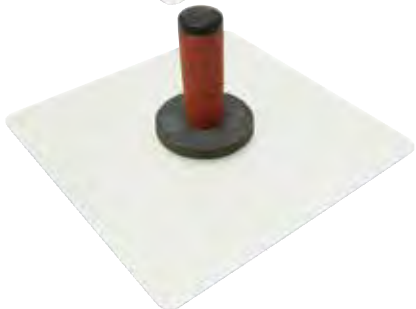
Part No	Size (Inches)	Size (Millimetres)	Blade	List Price
MAH212D	15¾" x 19½"	400mm x 500mm	Aluminium	£37.21



Magnesium Plasterers Hawk

- Scoured Blade
- Callous preventer
- Durasoft handle

Part No	Size (Inches)	Size (Millimetres)	Blade	List Price
M5206D	13" x 13"	325mm x 325mm	Magnesium	£51.47
M5208D	14" x 14"	350mm x 350mm	Magnesium	£57.50



Composite Plasterers Hawk

- Unique composite material
- Will not warp or react with caustic materials
- Scored Blade
- Durasoft Handle

Part No	Size (Inches)	Size (Millimetres)	Blade	List Price
M5227D	14" x 14"	350mm x 350mm	Composite	£33.83



Jointers

Brick Jointers

- Hardened blade
- Double ended
- For striking concave joints

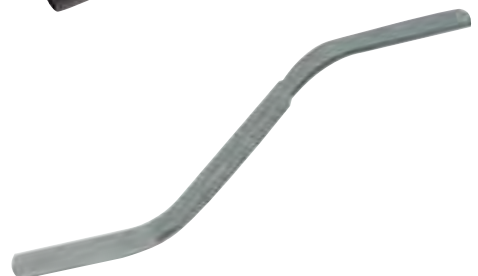
Part No	Size (Inches)	Size (Millimetres)	List Price
M80	½" & ⅝"	12.5mm & 16mm	£702
M81	¾" & 7/8"	19mm & 22mm	£702
M82	⅜" & ¾"	16mm & 19mm	£702
M83	⅜" & ½"	9.3mm & 12.5mm	£702



Barrell Jointers

- 4 threaded barrels
- Replacement barrels available

Part No	Size (Inches)	Size (Millimetres)	List Price
MBJ850	8½" x 2½"	216mm & 64mm	£22.34
MRB851 Barrel	½"	13mm	£3.61
MRB852 Barrel	⅜"	16mm	£3.61
MRB853 Barrel	¾"	19mm	£3.61
MRB854 Barrel	7/8"	22mm	£3.61



Carbon Slicker

- Length 10" (250mm), 3mm thick
- Use to make flat joints between brick and block
- Slicker compacts mortar, retaining moisture

Part No	Size (Inches)	Size (Millimetres)	Blade	List Price
M558	¼" & ⅜"	6.25mm & 9.30mm	Carbon Steel	£15.56
M562	½" & ⅝"	12.5mm x 16mm	Carbon Steel	£15.56
M566	¾" & 7/8"	6.25mm x 9.30mm	Carbon Steel	£15.56
M568	7/8" & 1"	21.8mm x 25mm	Carbon Steel	£15.56

Sled Runners

Solid Half Round Sled Runner

- Heavy guage steel mounting
- Durasoft handle
- Both ends are turned up for use in either direction

Part No	Size (Inches)	Size (Millimetres)	List Price
M609	15" x ½"	375mm x 13mm	£15.00



Half Round Sled Runner

- Heavy guage steel mounting
- Durasoft handle
- Both ends are turned up for use in either direction

Part No	Size (Inches)	Size (Millimetres)	List Price
M611	15" x ½"	375mm x 13mm	£13.65
M622D	18" x ¾"	450mm x 13mm	£14.66



V Joint Sled Runner

- Heavy guage steel mounting
- Durasoft handle
- V pattern provide a center line to emphasize the joint and conceal irregularities

Part No	Size (Inches)	Size (Millimetres)	List Price
M615D	15" x ¾"	375mm x 19mm	£13.65



Joint Rakers

Chariot Style

- Replaceable masonry nail
- Contoured metal handle
- Adjustable nail
- For removing mortar

Part No	List Price
M89	£12.74



Die Cut

- Die cut from 1/8" (3mm) Steel
- A 5/16" (8mm) and 5/16" (10mm) tab at either end rakes corners
- For removing mortar

Part No	List Price
M16193	£2.77



Rub Bricks

- For removing form marks from concrete
- Moulded plastic handle
- 20 Grit

Square

Part No	Size (Inches)	Size (Millimetres)	List Price
M840	6" x 3"	152mm x 75mm	£15.57



Round

Part No	Size (Inches)	Size (Millimetres)	List Price
M16533	6" x 1"	152mm x 25mm	£20.43





Brick Lines and Line Pins

Twisted Nylon Mason's Line

- Heat set after winding to stabilize
- Not affected by mortar, oil or mildew, will not absorb water
- For staking out sites before concreting, landscaping or laying bricks and blocks
- Core 4" (100mm)

Part No	Colour	Length (Feet)	Length (M)	List Price
M620	White	285	87m	£5.41
M621	Yellow	285	87m	£6.17



Braided Nylon Mason's Line

- Heat set after winding to stabilize
- Not affected by mortar, oil or mildew, will not absorb water
- For staking out sites before concreting, landscaping or laying bricks and blocks
- Core 4" (100mm)
- Fluorescent Colours

Part No	Colour	Length (Feet)	Length (M)	List Price
M631	Fluorescent Pink	285	87m	£8.66
M632	Fluorescent Yellow	285	87m	£8.66



Braided Nylon Mason's Line

- Bonded and braided for greater durability
- Not affected by extreme moisture, dryness or mildew
- For staking out sites before concreting, landscaping or laying bricks and blocks

Part No	Colour	Length (Feet)	Length (M)	List Price
ML613	Yellow & Black	500	152m	£19.86
ML615	Pink & Black	500	152m	£19.86
M635	Flecked White	500	152m	£16.44



Mason's Line Winder

- Plastic Winder
- Complete with orange Mason's line

No	Colour	Length (Feet)	Length (M)	List Price
M634	Orange	250	76m	£8.98



Wooden Line Blocks

- For running a line when laying bricks or blocks
- Shaped from poplar hardwood

Part No	Size (Inches)	Size (Millimetres)	Qty	List Price
M86	3 3/4"	95mm	1 Pair	£2.47



Plastic Line Blocks

- For running a line when laying bricks or blocks
- Bright yellow plastic, impervious to water
- Includes four plastic line twigs with 2 pairs of blocks
- Twigs are used to keep the mason's line from sagging between blocks

Part No	Size (Inches)	Size (Millimetres)	Qty	List Price
M86P	5" x 2 3/4"	125mm x 57mm	2 Pairs	£5.77



Corner Line Blocks

- Cast aluminium, will not rust
- Long stem for ease of movement
- Slot in fork guides mason's line, surface holds to wall

Part No	Qty	List Price
MCB507	1 Pair	£4.53



Adjustable Line Stretchers

- Fully adjustable
- Cast aluminium
- Sold in pairs
- Stretches mason's line between key course blocks

Part No	Size (Inches)	Size (Millimetres)	Qty	List Price
MALS504	4" - 12"	100mm - 300mm	2	£12.17



Line Twigs

- Steel, 14 twigs per bag
- Used to hold and maintain a straight line with bricks or blocks

Part No	Size (Inches)	Size (Millimetres)	Qty	List Price
M16509	N/A	N/A	14	£10.37



Rock Face Line Stretcher

- Stretches mason's line between blocks
- Cast aluminium, sold in pairs

Part No	Size (Inches)	Size (Millimetres)	Qty	List Price
M16650	N/A	N/A	2	£22.92



Mixers

Quik Mix

- Fits any $\frac{3}{8}$ " (10mm) or larger slow speed drill
- Ideal for mixing paint, drywall mud etc.

Part No	List Price
M819	£19.19



Jiffler Mixer

- Plated to resist corrosion
- Unique design breaks up lumps fast
- Fits any $\frac{3}{8}$ " (10mm) or larger drill

Part No	List Price
M893	£39.05

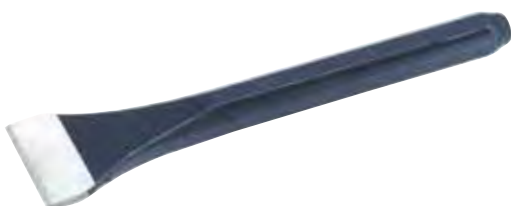


Brick Accessories

Brick Chisel

- Finger protector
- Soft-grip handle

Part No	Size (Inches)	Size (Millimetres)	List Price
M604G	8 $\frac{3}{4}$ "x4"	215mm x 100mm	£30.01



Stone Masons Chisel

- Forged steel blade

Part No	Size (Inches)	Size (Millimetres)	List Price
M647	8"x1 $\frac{3}{4}$ "	200mm x38mm	£16.18



Block Carrier

- Easily Adjustable
- Can carry 6-10 bricks

Part No	List Price
M88	£24.64

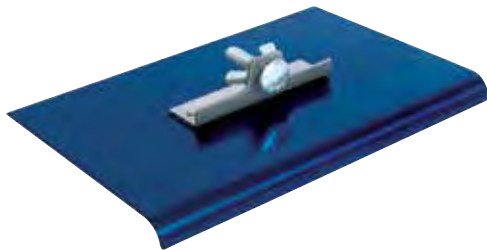


Walking Edgers

Walking Edger

- Heavy gauge blued steel
- Convex blade prevents gouging
- All angle attachments included
- Use M28 handle, handle adapter M6515
- Radius $\frac{3}{8}$ "/10mm- Lip $\frac{1}{2}$ "/13mm

Part No	Size (Inches)	Size (Millimetres)	List Price
M122B	9" x 4"	225mm x 100mm	£29.86



2 Way Edger

- Heavy gauge blued steel
- Convex blade prevents gouging
- Radius $\frac{1}{2}$ "/13mm Lip $\frac{5}{8}$ "/16mm

Part No	Size (Inches)	Size (Millimetres)	List Price
M4131	9" x 4"	225mm x 100mm	£15.28



Zinc Edger

- High Grade Zinc
- Convex blade curved at both ends, prevents gouging
- Radius $\frac{3}{8}$ "/10mm Lip $\frac{5}{8}$ "/16mm

Part No	Size (Inches)	Size (Millimetres)	List Price
M4012	9" x 4"	225mm x 100mm	£44.98



Groovers

Stainless Steel

- Sturdy steel mounting
- Properly shaped bit and leading edge to cut a sharp groove
- Durasoft handle

Part No	Size (Inches)	Size (Millimetres)	List Price
M180D	6" x 3"	150mm x 76mm	£14.14



Zinc

- High quality long wearing zinc construction
- Smooth finish allows for easy cleanup
- Finely finished to cut sharp clean grooves
- Durasoft Handle

Part No	Size (Inches)	Size (Millimetres)	List Price
M835D	6" x 4 $\frac{1}{2}$ "	150mm x 111mm	£34.33
M867D	6" x 4 $\frac{3}{8}$ "	150mm x 119mm	£39.05



Walking

- Quality zinc construction
- Cuts quickly and cleanly
- Double end permits use in either direction

Part No	Size (Inches)	Size (Millimetres)	List Price
M836	8" x 4 $\frac{3}{8}$ "	200mm x 111mm	£43.95



Trowel

- High-strength, hard alloyed steel blade
- Edges turned up for use with straightedge guide
- Durasoft Handle, can be positioned two ways

Part No	Size (Inches)	Size (Millimetres)	List Price
M4038D	6" x 6"	150mm x 150mm	£41.68



All Steel Walking

- High strength, hard alloyed steel for exceptional durability
- Cuts 6 grooves $\frac{3}{4}$ " apart, $\frac{1}{4}$ " deep

Part No	Size (Inches)	Size (Millimetres)	List Price
M14092	12" x 14"	300mm x 350mm	£63.48



Safety Step

- Angled edges to use against a guide
- Cuts 6 grooves $\frac{3}{4}$ " apart, $\frac{1}{4}$ " deep
- Stainless Steel
- Durasoft Handle

Part No	Size (Inches)	Size (Millimetres)	List Price
M4282D	6" x 6"	150mm x 150mm	£26.14



Spred-Kretes

12 Gauge Rolled Steel

- Sturdy steel ferrule holds handle in place. Use M828 Wooden Handle

Part No	Size (Inches)	Size (Millimetres)	Hook	List Price
M826	20" x 4"	500mm x 100mm	With Hook	£17.27
M827	20" x 4"	500mm x 100mm	No Hook	£16.84



Magnesium

- Lightweight magnesium construction

Part No	Size (Inches)	Size (Millimetres)	Hook	List Price
MB845	19" x 4"	475mm x 100mm	With Hook	£23.62



Rolled Steel Pull-Crete

- Blade is 12-gauge cold rolled steel
- Comes with 54" (1372mm) hardwood handle

Part No	Size (Inches)	Size (Millimetres)	Blade	List Price
MCM419	19" x 4"	483mm x 100mm	Magnesium	£25.76



Concrete Placers

Aluminium Alloy Pull-Cretes

- With 54" (1372mm) straight heavy duty wooden handle
- Braced for additional strength
- 10 gauge aluminium alloy
- Open angle profile

Part No	Size (Inches)	Size (Millimetres)	Description	List Price
MRED700505	20" x 4"	508mm x 102mm	Braced	£19.67
MRED700520	20" x 4"	508mm x 102mm	Braced+Hook	£22.45

- With 60" (1524mm) durable powder coated handle and rubberized grip
- Braced for additional strength
- Lightweight aluminium construction
- Open angle profile

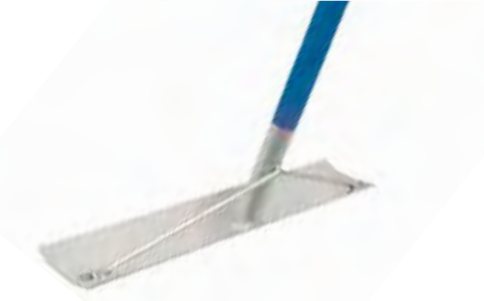
Part No	Size (Inches)	Size (Millimetres)	Description	List Price
MRED700158	20" x 3 $\frac{3}{4}$ "	508mm x 95mm	Braced	£32.54



Texas Steel Placer

- Comes with 60" (1524mm) contoured hardwood handle
- Light aluminium bracket mounts over blade
- Can be assembled with or without hook

Part No	Size (Inches)	Size (Millimetres)	List Price
MTX436	19½" x 4"	495mm x 100mm	£28.33



Aluminium Placer

- Aluminium construction
- Braced for additional strength
- 60" (1524mm) long aluminium handle

Part No	Size (Inches)	Size (Millimetres)	Hook	List Price
MAP753	19½" x 4"	495mm x 100mm	Without Hook	£34.63



Asphalt Lute

- Rake & Lute combination
- T" section blade
- Handle sold separately (M839)

Part No	Size (Inches)	Size (Millimetres)	List Price
M838	36"	900mm	£47.99



Concrete Tampers

- Can be used at a screed, float or check rod
- Dual edge design, sharp edge for cutting & round edge for floating concrete
- Adjustable handles

Part No	Size (Inches)	Size (Millimetres)	List Price
MT48	48" x 6½"	1220mm	£130.87



Big Diamond Splashing Grill

- Can be used at a screed, float or check rod
- Dual edge design, sharp edge for cutting & round edge for floating concrete.
- Adjustable handles

Part No	Size (Inches)	Size (Millimetres)	List Price
MT34	34" x 7½"	870mm	£102.27



Combo Screeds

Aluminium Screed

- Lightweight Aluminium construction
- Can be used as a screed, float or check rod
- Dual-edge design, sharp edge for cutting and round edge for floating concrete
- Adjustable brackets and handle

Part No	Size (Inches)	Size (Millimetres)	List Price
M13741	4'	1220mm	£44.29
M13743	6'	1840mm	£55.55
M13744	8'	2440mm	£67.63
M13745	10'	3040mm	£81.29
M13746	12'	3680mm	£91.83



Magnesium Alloy Screed

- Magnesium alloy, won't rust or rot
- End capped to prevent concrete getting inside
- Lightweight, long wearing and rigid

Part No	Size (Inches)	Size (Millimetres)	List Price
M4748	8" x 1" x 4"	2400mmx25x100mm	£136.61



Magnesium Feather Edge

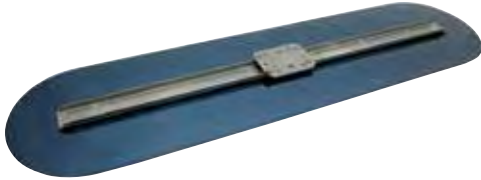
- Magnesium Alloy is lightweight and long wearing
- Extrusion shape allows for comfortable grip
- Tool pitch is controlled with thumb and palm
- Used in plastering trade to plane the brown coat and square up the inside corner edges

Part No	Size (Inches)	Size (Millimetres)	List Price
M5756	72"	1800mm	£81.20
M5758	96"	2400mm	£104.80

Blue Gliders

- Blue Spring Steel blade
- A 'C' channel runs the length of the gliders to help strengthen the blade
- Included with the gliders is a hardware package containing 2 bolts, 2 nuts, 2 lock washers & 2 flat washers
- Can be used with MRL6 Rotaleveler or MAB4 Autojust bracket (sold separately)

Part No	Size (Inches)	Size (Millimetres)	List Price
MBG36	36" x 12 ³ / ₈ "	914mm x 314mm	£147.66
MBG42	42" x 12 ³ / ₈ "	1067mm x 314mm	£163.16
MBG48	48" x 12 ³ / ₈ "	1219mm x 314mm	£177.65
MBG60	60" x 12 ³ / ₈ "	1524mm x 314mm	£229.62
MBG72	72" x 12 ³ / ₈ "	1829mm x 314mm	£270.73

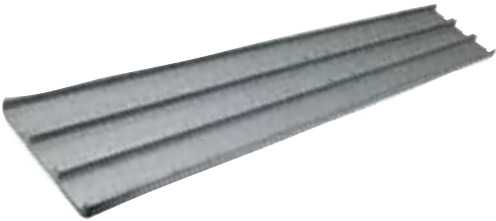


Magnesium Bull Floats

- Made from the finest extruded magnesium
- Lightweight, long wearing and balanced to provide the finish you want
- No other heavy duty bull float outlasts this one

Square End Blade

Part No	Size (Inches)	Size (Millimetres)	List Price
MB36B	36" x 8"	914mm x 200mm	£115.52
MB42B	42" x 8"	1067mm x 200mm	£130.33
MB48B	48" x 8"	1219mm x 200mm	£143.28



Round End Blade

Part No	Size (Inches)	Size (Millimetres)	List Price
MB42FRB	42" x 8"	1067mm x 200mm	£143.30
MB48FRB	48" x 8"	1219mm x 200mm	£156.25



Square End Blade with Bracket

- Made from the finest extruded magnesium
- Lightweight, long wearing and balanced to provide the finish you want
- No other heavy duty bull float outlasts this one
- MB45RA comes complete with MRL6 Rotaleveler
- Available as blade only

Part No	Size (Inches)	Size (Millimetres)	List Price
MB45	45" x 8"	1125mm x 200mm	£159.91
MB48	48" x 8"	1200mm x 200mm	£166.50
MB60	60" x 8"	1524mm x 200mm	£200.33
MB45RA	45" x 8"	1125mm x 200mm	£215.61



Round End Blade with Bracket

Part No	Size (Inches)	Size (Millimetres)	List Price
MB48FR	48" x 8"	1219mm x 200mm	£179.48



Round End Permashape with Bracket

- Made from the finest extruded magnesium
- Smooth steel stiffener makes cleanup easier
- Ten times more resistant to warping than standard bull floats
- Comes complete with bracket
- Sealed ends prevent concrete build up

Part No	Size (Inches)	Size (Millimetres)	List Price
MPSB48FR	48" x 8"	1219mm x 200mm	£218.50





Finishers Tote Kit

- The perfect kit for any concrete finisher

Part No	Contents	List Price
MBFKIT5	1 x MB48FRB 48" Round End Bull Float 4 x Handles 1 x RL6 Bracket 1 x Tote Bag	£369.46

Fresnos

- Superior quality high carbon steel blade
- Can be used with all Marshalltown bull float brackets with two-hole mounting options
- Use with M9 or M10 handle or M3749 Bull Float bracket adapter (sold separately)

Square End with Swivel Bracket

Part No	Size (Inches)	Size (Millimetres)	List Price
MMC30	30" x 5"	762mm x 125mm	£66.18

Round Ends with Swivel Bracket

Part No	Size (Inches)	Size (Millimetres)	List Price
MFR36R	36" x 5"	914mm x 125mm	£35.54
MFR48R	48" x 5"	1219mm x 125mm	£41.73

Round Ends with All Angle Bracket

Part No	Size (Inches)	Size (Millimetres)	List Price
MMC24R	24" x 5"	610mm x 125mm	£59.35
MMC30R	30" x 5"	762mm x 125mm	£66.85
MMC36R	36" x 5"	914mm x 125mm	£75.65

Shockwave

- Excellent Vibration dampening
- Fully adjustable handlebars and grips
- Reliable Honda® 4-stroke engine
- Direct drive shaft for extended life
- On board tachometer/hour meter great for rental and scheduled maintenance

Part No	Size (Feet)	Description	List Price
MSW100H		Engine	£2841.36
MSWSBLADE4	4ft	Blade	£362.91
MSWSBLADE6	6ft	Blade	£417.31
MSWSBLADE8	8ft	Blade	£572.94
MSWSBLADE10	10ft	Blade	£627.87
MSWSBLADE12	12ft	Blade	£681.20
MSWSBLADE14	14ft	Blade	£735.61
MSWSBLADE16	16ft	Blade	£1068.05
MSWSBLADE16P2	16ft	Blade (Requires 2 Engines)	£1068.05

Rock N Roller

- No special setup
- Start rolling imprints long before stamps could be applied
- Unique leverage system is adaptable to different weights

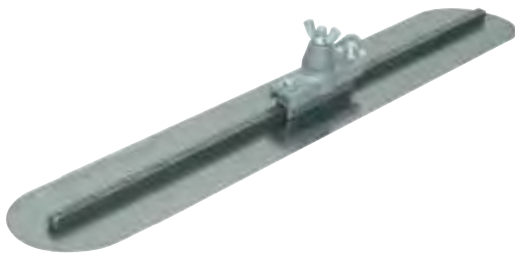
Part No	Size (Inches)	Size (Millimetres)	Description	List Price
MREDRR120	33 7/16"	849mm	Cobblestone	£1557.20
MREDRR125	11 5/16"	287mm	Cobblestone	£1224.21
MREDRR170	35 3/4"	908mm	Diamond	£1557.20

Brackets

Replacement Base

- Fits most four hole bull floats

Part No	List Price
MA3002	£15.51





Auto-just

- This bracket changes pitch automatically by just pushing and pulling
- Eliminates twisting, turning, raising and lowering when floating concrete
- Either screw type or push buttons can be used
- Push button handle requires a thread adapter
- Fits most two and four hole bull floats

Part No	List Price
MAB4	£101.05

Twister

- Cast aluminium bracket
- Universal mounting that fits any two or four hole bull float without adapters
- Gear driven for continuous adjustment
- Gears maintain pitch of blade reducing stress on wrists and arms
- Accepts 1 ³/₈" (35mm) and 1 ³/₄" (44mm) push button handles

Part No	List Price
MT91	£77.06

Chain RotaLeveler and Adapter

- Fits all two and four hole bull floats without adapters
- Chain driven
- Features easy control adjustment, smooth operation and a large protected grease reservoir
- Accepts most 1 ³/₈" (35mm) and 1 ³/₄" (44mm) push button handles

Part No	List Price
MRL6	£85.77

Cable RotaLeveler and Adapter

- Fits all two and four hole bull floats without adapters
- Cable driven
- Features easy control adjustment, smooth operation and a large protected grease reservoir
- Accepts most 1 ³/₈" (35mm) and 1 ³/₄" (44mm) push button handles

Part No	List Price
MRL6C	£89.67

Rock-it 2.0

- Allows multi- angle floating
- Enables use with extension handles for extremely long ranges
- Full pitch controlled by half turn of handle
- Fits all magnesium bull floats without adapter plates
- Accepts most 1 ³/₈" (35mm) and 1 ³/₄" (44mm) push button handles

Part No	List Price
MBF9	£68.20

Mini Rock-It

- Allows handle placement in any position within a 180 degree sweep
- Turn handle clockwise to lock in position, counter clockwise to unlock
- Connects push button handles to edgers groovers, fresnos and bull floats

Part No	Size (Inches)	Size (Millimetres)	List Price
M16-MR	1 ³ / ₈ " diameter	35mm diameter	£23.10
M16-MRL	1 ³ / ₄ " diameter	44mm diameter	£25.40

Clevis End Adapter

- Fits 1 ³/₈" (35mm) and 1 ³/₄" (44mm) push button handles
- Use with Bull Floats, Fresnos, Brooms etc.

Part No	List Price
M4818	£20.28

Male Thread Adapter

Part No	List Price
M4819	£17.03

Post Adapter

Part No	List Price
M4821	£18.26

Bull Float Adapter

Part No	List Price
M4822	£21.34



Bull Float Groover Attachment

- Slides over 8" Magnesium Bull Float
- Enables user to form grooves/expansion joints
- Hardened aluminium
- Thumbscrews tighten the attachment to the Bull Float.
- M4710 grooves a depth of 3/4" (19mm)
- M4712 grooves a depth of 1" (25mm)

Part No	List Price
M4710	£26.69
M4712	£28.11



Fresno Groover Attachment

- Made from durable hardened aluminium
- Thumbscrews tighten groover attachment to the trowel blade
- Designed to slip easily over a fresno
- Gives the user a tool similar to a walking groover
- M3742 grooves a depth of 1" (25mm)

Part No	List Price
M3742	£17.86



Fresno Bull Float Adapter

- Bracket will operate a Fresno with a Bull Float bracket

Part No	List Price
M3749	£24.62



Fresno Bull Float Adapter

- Rugged aluminium casting
- Connects standard threaded handle sections to a Fresno, Walking Edger or Groover, or any other tool equipped with similar attachment devices
- Unique 'wrench-flats' feature makes it easy to remove

Part No	List Price
M3748	£10.37



Bull Float Handle Adapter

- Adapter for smaller handles

Part No	Size (Inches)	Size (Millimetres)	List Price
MHA4	15"	381mm	£13.14



Threaded Handle Sections

- Lightweight Aluminium tubular design
- Larger threads can be combined with similar handles
- Warning: When using handle extensions, always avoid contact with electrical power lines or any electrical source

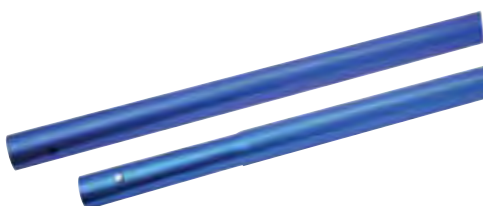
Part No	Size (Inches)	Size (Millimetres)	List Price
MB560	60" x 1 3/4" dia	1524mm x 26mm dia	£28.63
MB572	72" x 1 3/4" dia	1829mm x 26mm dia	£31.15



Push-Button Handle Sections Anodized Aluminium

- Anodized spring loaded button-type aluminium sections, snap together quickly and will not loosen
- Can be adapted for use with Bull Floats and other construction tools requiring a long handle
- Warning: When using handle extensions, always avoid contact with electrical power lines or any electrical source

Part No	Size (Inches)	Size (Millimetres)	List Price
MPB72	72" x 1 3/8" dia	1829mm x 26mm dia	£28.84
MPB72L	72" x 1 3/4" dia	1829mm x 26mm dia	£35.54
MWT174	Push Button Replacements for MPB72L		£0.79



Blue Aluminium Sections

- Constructed of thick-walled aluminium tubing
- Heat-treated, lightweight
- Quick connect snap spring positively locks handles in place

Part No	Size (Inches)	Size (Millimetres)	List Price
M17-6ASU	72" x 1 3/8" dia	1829mm x 26mm dia	£19.05
M17-8ASU	72" x 1 3/4" dia	1829mm x 26mm dia	£25.67
MPB96L	96" x 1 3/4" dia	2438mm x 26mm dia	£34.40

Silver Aluminium Sections

Part No	Size (Inches)	Size (Millimetres)	List Price
MPB192L	192"x1 3/4" dia	4877mm x 26mm dia	£65.33



Fibreglass Telescopic Pole

- Fibreglass outer tube and broom threaded end
- Aluminium inner tube
- Heavy duty
- Warning: When using handle extensions, always avoid contact with electrical power lines or any electrical source

Part No	Size (Inches)	Size (Millimetres)	List Price
MFP612	75-144" x 1 1/4"	1829mm-3658mmx31mm	£44.90



Asphalt Lute Handle

- Lightweight Aluminium

Part No	Size (Inches)	Size (Millimetres)	List Price
M839	72"	1829mm	£25.48



Speed Krete Handle

- Lightweight Aluminium

Part No	Size (Inches)	Size (Millimetres)	Material	List Price
M828	54" x 1 1/4"	1372mm x 32mm	Wood	£11.48



Wooden Handle with Clevis

- Fitted with a steel clevis
- For use with tools with a clevis-style bracket

Part No	Size (Inches)	Size (Millimetres)	Material	List Price
M9	54" x 1 1/16" dia	1372mm x 26mm dia	Wood	£26.59



Threaded Clevis Adapter

- Cut-out section of adapter fits over broom bracket and accepts broom thread handle
- Includes square bolt, wing nut and washer

Part No	List Price
M6515	£740



Flat Wire Broom

- Stiff steel tines for grooving while flexing for durability
- For providing uniform groove in concrete roadways
- Comes with threaded handle adapter installed, can be removed for use with clevis hand handle
- Tines are 5" (125mm) long and 1/8" (3mm) wide

Part No	Size (Inches)	Size (Millimetres)	List Price
M14860	48"	1219mm	£275.81



Wooden Concrete Broom

- Black polypropylene fibres set in a natural lacquered hardwood block with 2 3/4" (70mm) Long Bristles
- Ideal for applying non-slip finish to new concrete
- Thread accepts any standard broom handle

Part No	Size (Inches)	Size (Millimetres)	List Price
M847	36"	914mm	£31.08



Aluminium Concrete Broom

- Black polypropylene fibres set in a lightweight aluminium back with 3" (76mm) Long Bristles
- Used to brush concrete after floating
- Clevis handle mounting bracket included

Part No	Size (Inches)	Size (Millimetres)	List Price
M427	36"	914mm	£102.10
M428	48"	1219mm	£135.19



Aluminium Concrete Broom Head

- Broom should extend beyond float on both sides.
- Allows brooming & floating in one pass
- Can be used with Broom-Float Adapter (MAB4013) sold separately

Part No	Size (Inches)	Size (Millimetres)	List Price
MBFB48	48"	1219mm	£126.36



Broom Float Adapter Bracket

- When used to fit broom to Bull Float, allows floating & sweeping in one pass
- Eliminates reaching & lifting, can be used with flat wire brooms
- Includes attachments for Bull Floats, Blue Gliders, Fresnos and Multi-Mount Fresnos
- Broom used should extend beyond float on both sides

Part No	Size (Inches)	Size (Millimetres)	List Price
MAB4013	24"	610mm	£123.80



Vacuum Sander

- Ergonomic Durasoft handle designed specifically for vacuum sanding
- Allows for dustless sanding, no breathing protection required
- 360 degree pivoting elbow keeps hose out of the way
- Adjustable vent allows for variable vacuum force
- Low profile knobs stay out of the way
- Durable sanding pad for a smooth finish
- 12" (300mm) hose and one sanding screen included

Part No	Size (Inches)	Size (Millimetres)	List Price
MVS733	9 $\frac{3}{4}$ " x 3 $\frac{3}{4}$ "	235mm x 82mm	£25.69



Hand Sander

- Lightweight aluminium backing plate bonded to foam pad
- Durasoft Handle
- Uses standard and die-cut sanding sheets

Part No	Size (Inches)	Size (Millimetres)	List Price
M20	9 $\frac{7}{8}$ " x 3 $\frac{3}{4}$ "	239mm x 82mm	£14.07



Swivel Pole Sander

- Made of reinforced die cast aluminium bonded to a foam rubber pad
- Fast positive clamps lock securely to hold sandpaper in place
- Used for sanding drywall joints, on walls and for sanding ceilings
- Use with M28 handle
- Uses standard and die-cut sanding sheets

Part No	Size (Inches)	Size (Millimetres)	List Price
M26	9 $\frac{7}{8}$ " x 3 $\frac{3}{4}$ "	239mm x 82mm	£18.03



Universal Swivel Pole Sander

- Made of reinforced die cast aluminium bonded to a foam rubber pad
- Won't flip or bind
- Unique design keeps the entire pad on your work surface
- Fast positive clamps lock securely to hold sandpaper in place
- Used for sanding drywall joints, on walls and for sanding ceilings
- Use with M28 handle
- Uses standard and die-cut sanding sheets

Part No	Size (Inches)	Size (Millimetres)	List Price
M26A	9 $\frac{7}{8}$ " x 3 $\frac{3}{4}$ "	239mm x 82mm	£23.39



Pole Sander Handle

- Made from hardwood
- With threaded end and metal ferrule
- Use with M26 and M26A Marshalltown sanders

Part No	Size (Inches)	Size (Millimetres)	List Price
M28	48"	1200mm	£8.92



Sandscreen

- Can be used wet or dry
- Will outlast regular sandpaper
- Will fit all Marshalltown sanders and similar sanders
- Packed in bags of 5 sheets

Part No	Grit	List Price
M918	120	£9.59
M935	150	£9.59



Die Cut Sandpaper

- Will fit all Marshalltown sanders and similar sanders
- Packed in boxes of 100 sheets

Part No	Grit	List Price
M809	80	£34.61
M815	150	£32.59



Drywall Rasps

- Removes 45% more material per stroke than other popular rasps
- Will not clog or collect dust
- Works in both directions
- Available with or without guide rails
- Contoured Durasoft handle
- Long lasting sharp stainless steel blade has many other uses

Part No	Rails	List Price
MDR390	Without Rails	£11.48
MDR389	With Rails	£11.48



Drywall Panel Lifter

- Easily assembled and operated by 1 person
- Legs fold inward to fit through standard doorway
- Supports up to 4 x 8' sheets.
- Load capacity 150lb

Part No	Size (Inches)	Size (M)	List Price
MPL11C	11' x 6' (max)	3.35m x 1.83m (max)	£606.60
MDPLE72	6' extension	1.84m	£415.18



Drywall Board Lifter

- Non slip surface for traction
- Self-righting feature, easy to use without fumbling
- Handy device can be used to lift doors or boards into position
- Tapered front end slides easily under board then lifts and holds it in place while nailing

Part No	Size (Inches)	Size (Millimetres)	List Price
M790	12" x 5½"	300mm x 133mm	£23.81



Drywall Board Lifter

- Rigid steel construction, ribbed back, weighted nose and roller-wheel all combine for moving ease
- Permits one-man handling and nailing

Part No	Size (Inches)	Size (Millimetres)	List Price
MRL801	5" x 2¼"	381mm x 57mm	£19.52



Banjo Taper

- Precision mud flow control is easy adjust
- Made from lightweight aluminium
- One-handed mud loading
- Latched door on tape spool holder
- Serrated cut off blade

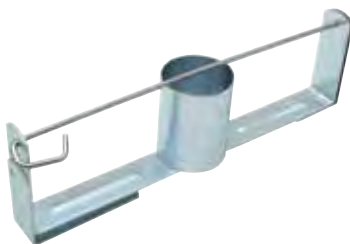
Part No	List Price
M798D	£188.63



Circle Cutter

- Cuts sharp clean circles of up to 16" (406mm) diameter with one hand
- Hardened cutter wheel & centre pin will remain sharp indefinitely
- Measure accurately on the calibrated steel shaft

Part No	Size (Inches)	Size (Millimetres)	List Price
MCC766	8½"	216mm	£11.75



Tape Reel Dispenser

- Steel plated to prevent rust
- Holds all standard tape rolls up to 500ft (152m)
- Hangs on belt for ease of dispensing
- Quick opening design makes changing tape easy

Part No	Size (Inches)	Size (Millimetres)	List Price
M31	10¼" x 3"	260mm x 76mm	£12.38



Drywall Mesh Tape

- Self-adhesive, apply directly to joint without compound

Part No	Size (Imperial)	Size (Metric)	List Price
MMT05	75' x 2"	23m x 50mm	£5.24
MMT06	150' x 2"	46m x 50mm	£8.01
MMT07	300' x 2"	91m x 50mm	£12.02



Drywall 'T' Square

- Black epoxy paint numerals
- Notched head, reverse rulings & stud markings allow quick accurate cuts
- Enables cutting a 48" (1219mm) board in one pass while board is standing on the floor

Part No	Size (Inches)	Size (Millimetres)	List Price
M27	47⅞" x 22" x ⅛"	N/A Imperial	£29.35
M27XM	N/A Metric	1219mmx559mmx3mm	£27.94



Drywall Saw

- Plastic or wooden handle
- Hardened & tempered blade, 5 teeth per inch
- Cuts through wallboard, gypsum, lath and thin coat backing board

Part No	Size (Inches)	Size (Millimetres)	Handle	List Price
M21	15"	381mm	Plastic	£18.45
MDS921	15"	381mm	Wood	£7.83



Utility Saw

- Contoured wood handle
- Heavy gauge blade, 8 teeth per inch
- Sharp blade penetrates wall board without drilling
- Cuts wallboard, masonite, plywood and wood

Part No	Size (Inches)	Size (Millimetres)	Handle	List Price
M22	6"	150mm	Wood	£6.62



Rock Warrior Drywall Saw

- Soft grip handle
- Tempered high carbon steel blade, bevelled point
- Cuts in both directions (push/pull)
- For drywall, cuts almost any non-metallic material

Part No	Size (Inches)	Size (Millimetres)	Handle	List Price
MRW426	6"	150mm	Soft grip	£10.75



Mud Masher

- Plated heavy gauge steel mixing head
- Hardwood handle
- Square Head

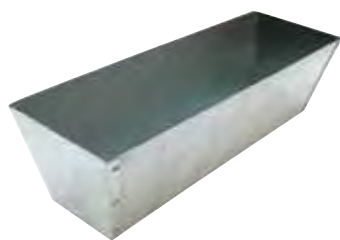
Part No	Size (Inches)	Size (Millimetres)	List Price
M891	5" x 5½"	127mm x 140mm	£20.64



Semi-Round Mud Masher

- Heavy gauge plated steel mixing head
- Metal ferrule is securely attached
- Hardwood handle
- Semi-round head

Part No	Size (Inches)	Size (Millimetres)	List Price
M892	5" x 5½"	127mm x 140mm	£24.81



Mud Pans and Boards

Galvanised Mud Pan

- Galvanised steel construction
- Tapered ends and sides with mud-tight seams
- Sides are sheared to clean knives easily

Part No	Size (Inches)	Size (Millimetres)	List Price
M813	12"	300mm	£11.03



Plastic Mud Pan

- Hard wearing plastic with hang tab
- Equipped with two metal wiping blades
- Resists chemicals and temperature changes

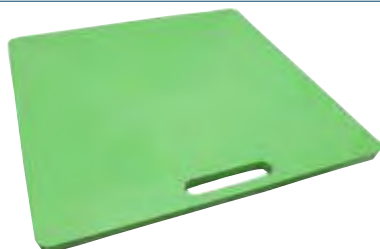
Part No	Size (Inches)	Size (Millimetres)	Handle	List Price
M814	13"	330mm	Plastic	£5.81



Gatorback Mortarpan

- Made of a lightweight, impact and UV resistant polymer that won't conduct heat like steel pans and is nearly indestructible
- Lightest pan on the market at only 8lbs
- Reinforced integrated handles for easy transportation
- Impervious rigid surface made with a double thick bottom for superior durability
- Holds up to 1.75 cubic feet (225lbs) of mortar
- Open faced design and 6" depth makes it easier for masons to efficiently remove mortar

Part No	Size (Inches)	Size (Millimetres)	List Price
M14998	30" x 30"	762mm x 762mm	£55.46



Gatorback Mortarboard

resistant, contour surface is designed to keep mortar and stucco at optimal workability and consistency

- Made of lightweight, impact and UV resistant polymer that won't conduct heat and is nearly indestructible
- Reinforced handle for easy transformation
- Reinforced ribbing enables Gatorback mortarboards to hold up to 150lbs of material with little flex

Part No	Size (Inches)	Size (Millimetres)	List Price
M14999	24" x 24"	610mm x 610mm	£46.85



'Enforcer' Portable Texture Sprayer

- One air hose from any compressor does all the work for both pressurized tank and hopper gun
- 2.5 gallon capacity
- Up to 1.7 gpm flow rate
- Piston seal cleans the inner tank wall for less mess
- Empty weight of unit 15lbs
- Full weight of unit 45lbs
- 15 psi. max air in tank no matter what compressor is set at for hopper gun
- Quick-Release top cap with pressure release pin easily removes for cleaning and filling
- Refill using a mud pump for maximum efficiency
- Sprays knockdown, popcorn, orange peel and splatter textures

Part No	List Price
ME400	£593.98



Sharpshooter Hopper Gun

- Specially formulated nylon gun
- Seven orifice sizes with tubular design for reduced over spray and greater texture variety
- Knurled knobs let you adjust the orific plate without wrenches
- Right sealing flow shutoff prevents leakage
- Angled hopper adapter allows hopper to remain level while spraying floors and ceilings
- Gun features a handy a control valve which allows flow control at the gun instead of at the pump
- Easy pull swing trigger for greater control and less fatigue
- Adjustable trigger stop for consistency of pattern
- Hopper with seamless corner design eliminates material build-up and reduces clogging
- Plastic hopper capacity is approximately 2 gallons (7.56 litres)

Part No	List Price
M693	£124.11



Knockdown Knife

- Reduces drying time when used for texturing
- Blades made of GE Lexan
- Threaded Durasoft handle with metal ferrule and hanging hole

Part No	Size (Inches)	Size (Millimetres)	List Price
MKD36	36"	914mm	£44.35



Adjustable Squeeeges

- Adjust the pitch 35° in either direction for ceilings and tight corners
- Threaded Durasoft handle with metal ferrule and hanging hole
- Durasoft blade moulded to a high impact backing ensures consistent finishes and long life

Part No	Size (Inches)	Size (Millimetres)	List Price
MAKD18	18"	457mm	£25.38
MAKD22	22"	559mm	£27.23



Broad Knife

- Blue spring steel blade
- Used for taping joints, more flexible than a taping knife
- Rubber cap with hanger

Part No	Size (Inches)	Size (Millimetres)	List Price
MBK385	7" x 17 $\frac{1}{8}$ "	178mm x 454mm	£13.52

Floor Scraper

- 60" (1524mm) steel handle
- Heavy gauge spring steel
- The perfect clean-up tool

Part No	Size (Inches)	Size (Millimetres)	List Price
M820	20" x 4 $\frac{1}{2}$ "	500mm x 114mm	£46.95
M820B	Replacement Blade		£12.28



- Steel construction
- For finishing decorative details

Part No	Size (Inches)	Size (Millimetres)	Blade	List Price
M5787D	4 1/4"	110mm	90°	£13.92

Inside Corner Trowel

- Stainless Steel construction
- For finishing decorative details
- For use with concrete and plaster

Part No	Size (Inches)	Size (Millimetres)	Blade	List Price
M65	6" x 2 1/2"	150mm x 64mm	Square Radius	£14.20
M66	6" x 2 1/2"	150mm x 64mm	1/2" Radius	£14.20



Outside Corner Trowel

- Stainless Steel construction
- For finishing decorative details
- For use with concrete and plaster

Part No	Size (Inches)	Size (Millimetres)	Blade	List Price
M67D	6" x 2 1/2"	150mm x 64mm	Square Radius	£14.20
M68	6" x 2 1/2"	150mm x 64mm	1/2" Radius	£14.20



Drywall Inside Corner Trowel

- Stainless Steel construction
- For finishing drywall corners
- For use with plaster

Part No	Size (Inches)	Size (Millimetres)	Handle	List Price
M23D	4" x 5"	100mm x 127mm x 103°	Durasoft	£15.89
M24D	5" x 3 1/2"	127mm x 95mm x 90°	Durasoft	£14.43



Drywall Outside Corner Trowel

- Stainless Steel construction
- For finishing drywall corners
- For use with plaster

Part No	Size (Inches)	Size (Millimetres)	Handle	List Price
M25D	5" x 3 3/4"	127mm x 95mm x 80°	Durasoft	£16.63



Drywall Inside Bull Nose Corner Trowel

- Stainless Steel construction
- For finishing drywall corners
- For use with plaster

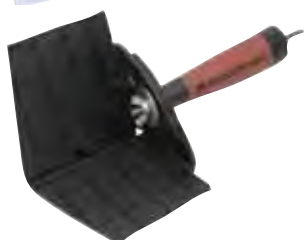
Part No	Size (Inches)	Size (Millimetres)	Handle	List Price
M51D	5" x 3 1/2"	127mm x 95mm x 90°	Durasoft	£16.18



Drywall Outside Bull Nose Corner Trowel

- Stainless Steel construction
- For finishing drywall corners
- For use with plaster

Part No	Size (Inches)	Size (Millimetres)	Handle	List Price
M50D	5" x 3 1/2"	127mm x 95mm x 80°	Durasoft	£16.18



Drywall Exact Angle Corner Trowel

- Non-mark nylon construction
- For finishing drywall corners
- For use with plaster

Part No	Size (Inches)	Size (Millimetres)	Handle	List Price
MEA917	4" x 4"	100mm x 100mm	Durasoft	£17.34



Taping Knives

Stainless Steel

- Premium stainless steel blade and backing plate
- Temper weld construction improves holding power
- Blade flexes just right for feathering but won't take set
- Structural foam, ergonomically designed handle provides maximum comfort
- Handle will not crack splinter or break

No	Size (Inches)	Size (Millimetres)	Handle	List Price
M2508SS	8" x 3"	200mm x 76mm	Foam	£14.62
M2510SS	10" x 3"	250mm x 76mm	Foam	£16.08
M2512SS	12" x 3"	300mm x 76mm	Foam	£18.29
M2514SS	14" x 3"	350mm x 76mm	Foam	£20.79



Durasoft Stainless Steel

- Premium tempered stainless steel blade with aluminium backing plate
- Tempered blade flexes just right for feathering but won't take set
- Resilient Durasoft handle provides a soft feel, reduces fatigue and offers excellent durability

Part No	Size (Inches)	Size (Millimetres)	Handle	List Price
M3506SD	6" x 3"	150mm x 76mm	Durasoft	£13.54
M3508SD	8" x 3"	200mm x 76mm	Durasoft	£14.30
M3510SD	10" x 3"	250mm x 76mm	Durasoft	£15.25
M3512SD	12" x 3"	300mm x 76mm	Durasoft	£16.18
M3514SD	14" x 3"	350mm x 76mm	Durasoft	£18.03
M3516SD	16" x 3"	400mm x 76mm	Durasoft	£19.23



Durasoft II Stainless Steel

- Premium tempered stainless steel blade with rigid alloy backer
- Blade is tapered so you can run corners faster and easier
- Narrow profile Durasoft handle moves hand forward to help improve blade control
- Ergonomic contours for improved comfort
- One of the most lightweight knives on the market

Part No	Size (Inches)	Size (Millimetres)	Handle	List Price
M4508SD	8" x 3"	200mm x 76mm	Durasoft II	£10.91
M4510SD	10" x 3"	250mm x 76mm	Durasoft II	£11.60
M4512SD	12" x 3"	300mm x 76mm	Durasoft II	£12.47



Blue Steel

- Made of highest grade blue spring steel
- Comfortable contoured wood handle
- Blade flexes just right for feathering but won't take set
- Each blade and backing plate fully temper welded to improve holding ability

Part No	Size (Inches)	Size (Millimetres)	Handle	List Price
M2508	8" x 3"	200mm x 76mm	Wood	£12.26
M2510	10" x 3"	250mm x 76mm	Wood	£13.95
M2512	12" x 3"	300mm x 76mm	Wood	£15.89
M2514	14" x 3"	350mm x 76mm	Wood	£18.10



Durasoft Blue Steel

- Premium tempered blue steel blade with aluminium backing plate
- Blade is tapered so you can run corners faster and easier
- Blade flexes just right for feathering but won't take a set
- Resilient Durasoft handle provides a soft feel, reduces fatigue and offers excellent durability

Part No	Size (Inches)	Size (Millimetres)	Handle	List Price
M3508D	8" x 3"	200mm x 76mm	Durasoft	£12.57
M3510D	10" x 3"	300mm x 76mm	Durasoft	£13.44
M3512D	12" x 3"	350mm x 76mm	Durasoft	£14.68



Durasoft II Blue Steel

- Premium tempered blue steel with rigid alloy backer
- Blade is tapered so you can run corners faster and easier
- Narrow profile Durasoft handle moves hand forward to help improve blade control
- Ergonomic contours for improved comfort
- One of the most lightweight knives on the market

Part No	Size (Inches)	Sizes (Millimetres)	Handle	List Price
M4508D	8" x 3"	200mm x 76mm	Durasoft	£8.75
M4510D	10" x 3"	250mm x 76mm	Durasoft	£9.04
M4512D	12" x 3"	300mm x 76mm	Durasoft	£9.49



Utility Knife

- Push button blade release
- Butterfly storage that holds five extra blades
- Durasoft handle for increased comfort and reduced fatigue
- Cut string safely and easily

Part No	List Price
M9059	£9.70



Utility Knife

- Push button blade release
- Slide storage that holds five extra blades
- Durasoft handle for increased comfort and reduced fatigue
- Cut string safely and easily

Part No	List Price
M9058	£7.97



Break-off Knife

- 9mm/13 point blade
- 2 extra blades stored inside handle
- Blade automatically locks in position
- End cap used to snap blades, replacement blades available
- Durasoft handle

Part No	List Price
M9051	£1.99



Carpet Knife

- Magnet holds blade in place during replacement
- Large knob allows for easy opening
- Durasoft handle for increased comfort and reduced fatigue
- Includes three blades stored in handle
- Durasoft handle

Part No	List Price
M9060	£8.73



Plaster Crack Cutter

- Hardened steel tip
- Durasoft handle

Part No	List Price
ME683	£9.87

Putty & Joint Knives

Nylon Handle Putty and Joint Knives

- Heat treated, hardened and tempered; annealed steel or an even hardness throughout the blade
- Full tang through the handle
- Smooth black polyethylene handle resistant to virtually all chemicals and solvents
- Weighted handle accommodates our heavier blades for perfect balance

Part No	Size (Inches)	Size (Millimetres)	Description	List Price
M5743	4"	102mm	Flex Scraper	£8.03
M5753	5"	127mm	Flex Joint Knife	£8.35
M5763	6"	152mm	Flex Joint Knife	£9.57



Durasoft Handle Scrapers, Putty and Joint Knives

- Next generation ergonomic design offers the most comfortable grip possible
- Heat treated, hardened and tempered; annealed steel or an even hardness throughout the blade
- Solid handle construction ensures the strongest and longest lasting tool available
- MSK882D, MJ884D, MJK886D, have oversized EMPACT hammering head for quick, effective hammer

Part No	Size (Inches)	Size (Millimetres)	Description	List Price
MPK860D	1¼"	32mm	Stiff Putty Knife	£4.44
MPK863D	1½"	38mm	Stiff Putty Knife	£4.88
MPK876D	1½"	38mm	Flex Putty Knife	£4.88
MPK865D	2"	50mm	Stiff Putty Knife	£5.36
MPK878D	2"	50mm	Flex Putty Knife	£5.36
MSK867D	3"	76mm	Stiff Scraper	£6.50
MSK879D	3"	76mm	Flex Scraper	£6.50
MSK882D	4"	102mm	Flex Scraper	£9.13
MJK884D	5"	127mm	Flex Joint Knife	£9.66
MJK886D	6"	152mm	Flex Joint Knife	£10.61



QLT Scraper and Joint Knives

- Flexible stainless steel blade
- Moulded plastic handle

Part No	Size (Inches)	Size (Millimetres)	Description	List Price
M904	4"	102mm	Flex Scraper	£8.37
M905	6"	152mm	Joint Knife	£10.67

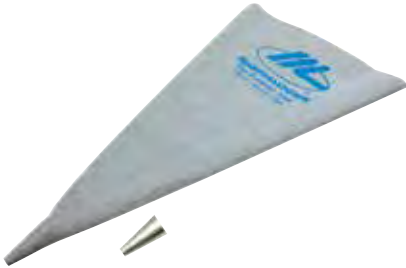




Tile Grouters

- Moulded plastic handle
- White rubber non-mark pure gum rubber face
- Edges are bevelled, the two front corners are rounded

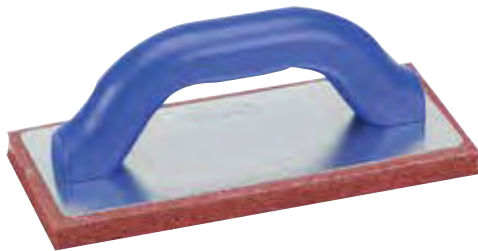
No	Size (Inches)	Size (Millimetres)	Face	List Price
M43	9" x 4"	225mm x 100mm	White Rubber	£13.88
M43XL	12" x 4"	300mm x 100mm	White Rubber	£17.65



Grout Bag

- Seamless black vinyl
- Holds and dispenses grout & mortar
- Supplied with tip, replacements available

Part No	List Price
MGB692	£7.26



Rubber Floats

- Moulded plastic handle
- Rubber pad is bonded to the aluminium backing plate for long wear
- Can also be used by concrete finishers and plasterers

Part No	Size (Inches)	Size (Millimetres)	Face	List Price
M38	9" x 4"	225mm x 100mm	Fine Cells	£10.25
M39	9" x 4"	225mm x 100mm	Coarse Cells	£10.25
M40	9" x 4"	225mm x 100mm	Moulded Black	£11.91



Grout Saw

- Die cast aluminium mounting with finger guard
- 2" (50mm) blade coated with tungsten carbide

Part No	Size (Inches)	Size (Millimetres)	List Price
M446	2"	50mm	£13.76
M15465	Replacement Blade		£7.64



Tile Space Popper

- Easily removes tile spacers before grouting

Part No	List Price
MTSP473	£10.25



Wipe Down Blade

- Flexible Rubber Blade
- Use as a hand tool or with any 1" diameter handle
- For taping and cleaning excess mud

Part No	List Price
M30	£22.51



- Calf cuff ratchet system to comfortably fit any size leg
- Ratchet ankle adjustment and locking toe strap ensure a tight comfortable fit
- New and improved composite footplate, reinforced with aluminium truss
- Flip and switch system allows for quick height adjustment
- Fully adjustable ankle spring allows for a more natural walking motion
- Durable rubber sole allows for longer life and better traction
- 225lbs load limit

Part No	Size (Inches)	Size (Millimetres)	List Price
MSKY2118	18" - 30"	460mm - 760mm	£436.02
MSKY2124	24" - 40"	601mm - 1002mm	£479.10

Skywalker Stilts 2.1 Parts

Part No	Description	List Price
MC902	Calf Strap (1 Pair)	£71.44
MFS903	Foot Straps (2 Sets)	£33.76
MCB904	Cuff Adjustment Bolt (4 Bolts)	£4.53
MAB906	Ankle Brushing	£11.18
MSP907	Ankle Spring	£25.76
MFP905	Foot Plate & Out Sole	£27.99
MLL945	Lower Lock Assembly	£11.15



Skywalker Stilts 1.0

- Heavy gauge overlapping aluminium leg tubes
- Padded calf brace
- Dual spring action
- Adjustable metal buckle straps and adjustable heel plates already attached
- 225lbs load limit

Part No	Size (Inches)	Size (Millimetres)	List Price
MSW18	18" - 30"	460mm - 760mm	£246.58
MSW24	24" - 40"	601mm - 1002mm	£246.58

Skywalker Stilts 1.0 Parts

Part No	Description	List Price
MP1	Leg band with pads	£8.49
MP2	Leg band spacer	£1.61
MP3	1/4" - 20 x 2 Screws	£0.47
MP4	Alligator Buckle Leg Strap	£7.10
MP7	Alligator Buckle Leg Arch Straps	£6.45
MP8	Alligator Buckle Leg Toe Straps	£6.09
MP9	Nylon Foot Plate	£14.22
MP10	Adjustable Heel Bracket	£5.93
MP11	Leg Bearing	£0.47
MP12	1/4" Flat Washer	£0.21
MP13	1/4" Nylon Insert Lock Nut	£0.61
MP15	Spring Adjuster	£3.04
MP16	Upper Coil Spring (Black)	£2.66
MP17	Strap Mounting Washer	£0.68
MP20	Spring Divider	£2.98
MP21	Leg Band Washer	£0.72
MP26	Nylon Floor Plate	£14.22
MP27	1/4" - 320 x 3" Cap Screw w/Lock	£1.02
MP29	Round-Lock Front Tube Clamp	£2.68
MP30	Round Lock Rear Tube Clamp	£3.06
MP35	Strap Mounting Screw	£0.31
MP37	Sole Mounting Screw	£2.43
MP42	Wing Bolt with Washer	£3.06
MP44	Lower Coil Spring Zinc Plated	£2.43
MP45	Spring Assembly - 1 Stilt	£16.54
MP46	Soles with Screws	£5.48
MP47-18	ST18 Forward Leg	£24.70
MP47-24	ST24 Forward Leg	£27.87
MP48	Downward Large Nylon Sleeve	£5.58
MP49	Upward Small Nylon Sleeve	£3.82
MP51-18	Inner Extension Tube (1880)	£26.18
MP51-24	Inner Extension Tube (2440)	£27.87



Tool Bags

Canvas

- Canvas finish, top opening, inside pocket
- Waterproof bottom with 4 metal studs
- Handles, billets & buckles riveted to frame

Part No	Size (Inches)	Size (Millimetres)	List Price
M831	20" x 15"	500mm x 380mm	£51.95

Small Nylon

- Double layer durable water-resistant nylon with reinforced bottom panel
- Padded handles for comfort, adjustable shoulder strap

Part No	Size (Inches)	Size (Millimetres)	List Price
MNB201	15¾" x 9" x 9¾"	394mmx229mmx241mm	£34.68

Medium Nylon

- Double layer durable water-resistant nylon with reinforced bottom panel
- Padded handles for comfort, adjustable shoulder strap

Part No	Size (Inches)	Size (Millimetres)	List Price
MNB202	20" x 8½" x 13½"	500mmx216mmx343mm	£39.64

Large Nylon

- Double layer durable water-resistant nylon with reinforced bottom panel
- Padded handles for comfort, adjustable shoulder strap

No	Size (Inches)	Size (Millimetres)	List Price
MNB203	24" x 10½" x 13½"	610mmx267mmx343mm	£50.90

Leather Tool Pouch

- Heavy top grain saddle leather
- U loop hammer holder, rule pocket and belt loop
- Pouch riveted at all stress points
- Gusseted sides give shape

Part No	List Price
M805	£30.89

Leather Hammer Holder

- Heavy top grain russet leather
- Steel cradle allows hammer to swing freely
- Slotted to fit on belt

Part No	List Price
M874	£5.45

Neolite Knee Pads

- Hard wearing, tough construction
- Felt lined and shaped to fit your knee
- Held in place by one leather strap which will not slip or bind

Part No	List Price
M821	£39.05

Rubber Knee Pads

- Made from comfortable foam rubber
- Held in place by single web strap which will not slip or bind

Part No	List Price
M823	£16.67



Wigan, England
Bulldog
 Since 1780

CHANNEL LOCK

Eklind

Estwing

FISHER

IREGA
 THE ADJUSTABLE IS OUR WORLD

JOHNSON

KEIRA
 watering cans

MARSHALLTOWN
 The Premier Line

MW
 MECHANIX WEAR

NORTON

RST
 TOOLS

WITTE
 WERKZEUGE

ZIRCON

Rollins & Sons (London) Limited
 Rollins House, 1 Parkway, Harlow
 Essex CM19 5QF

T // +44 (0) 1279 401570
F // +44 (0) 1279 401580

W // www.rollins.co.uk

E // info@rollins.co.uk

ID1345 e. & o.e.

RPCOCT13MAR14



Rollins
 TOOLS FOR THE PROFESSIONAL