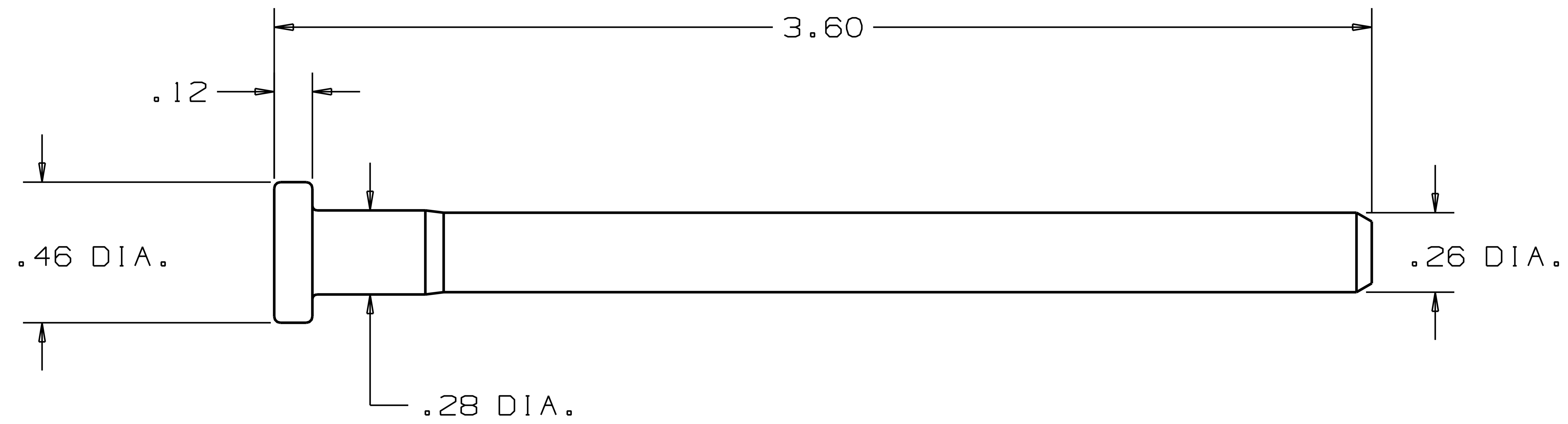


NOTE: PIN DIAMETER VALID FOR HINGES
PURCHASED PRIOR TO 2006. AFTER
2006 PIN SHOULD BE MEASURED AND
COMPARED TO SIZES SHOWN.
A REPLACEMENT PIN FOR NEWER HINGES
IS NOT YET AVAILABLE.



Dimensions shown are nominal and
subject to change. For critical design
specification, contact techinfo@natman.com
©2007 National Manufacturing Co.