

# **RAZORBACK<sup>®</sup>**

**PROFESSIONAL TOOLS**



**2016 Full Line Catalog**



# WHY CHOOSE RAZOR-BACK®?

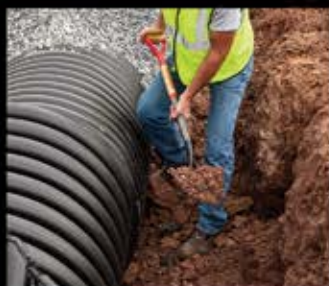
## THE RECOGNIZED LEADER IN PROFESSIONAL JOB SITE TOOLS

Since 1936 Razor-Back® Professional Tools have been in the hands that tackle the toughest jobs known to man.



### MORE POWER

Features like the PowerStep® put more power in your hands and improve footing to move through the hardest, rockiest soil.



### STRONG AS STEEL

Industrial-gauge, tempered steel delivers solid and dependable performance in the toughest conditions.



### BUILT TO LAST

Razor-Back® tools have a lifetime warranty. Pros count on Razor-Back® to perform.



### MADE TOUGH

One-piece forged steel, extra long handles and steel ferrules make Razor-Back® the preferred choice for professionals who know the difference.





# TABLE OF CONTENTS

<b>Cultivators</b>	<b>15</b>
<b>Cutters</b>	<b>15</b>
<b>Edgers</b>	<b>18</b>
<b>Fire Tools</b>	<b>14</b>
<b>Forks</b>	<b>16</b>
<b>Hoes</b>	<b>14</b>
<b>Hooks</b>	<b>15</b>
<b>Post Hole Diggers</b>	<b>17</b>
<b>Rakes</b>	<b>11 - 12</b>
<b>Roofing Tools</b>	<b>18</b>
<b>Scoops - Aluminum</b>	<b>7 - 8</b>
<b>Scoops - Steel</b>	<b>9 - 10</b>
<b>Scrapers</b>	<b>13</b>
<b>Shovels - Clean Out</b>	<b>6</b>
<b>Shovels - Digging</b>	<b>1 - 2</b>
<b>Shovels - Solid Shank</b>	<b>4</b>
<b>Shovels - Transfer</b>	<b>3</b>
<b>Shovels - Trenching</b>	<b>6</b>
<b>Spades</b>	<b>5</b>
<b>Striking Tools - <b>NEW</b></b>	<b>19 - 22</b>
<b>Tampers</b>	<b>18</b>
<b>INDEX</b>	<b>26</b>





# FEATURES DEMAND

## DUAL RIVETS

Two rivets lock the handle in place and distribute much of the load from handle to steel socket.

## 14 GAUGE STEEL

Razor-Back® tools are made with thick heavy-gauge steel for supreme durability. Our shovel heads are forged from tough steel.

## SUPERSOCKET®

The SuperSocket® is a full five inches longer than other industrial-grade sockets. Made of hardened steel, the SuperSocket® provides a strong socket connection for extra reinforcement where you need it most.





# DED BY THE PROS

## POWERSTEP®

When digging through deep, hard-packed, or rocky soil, the PowerStep® provides an oversized cleated step for more secure footing and raw power.



## ARMOR D-GRIP

For ultimate control and leverage, look no further than the Armor D-Grip. Built for heavy jobs, the steel encases the hardwood and prevents twisting, providing the strongest and most secure grip for demanding loads.



## HEAVY DUTY GRIPS

For pros who prefer to have grips on their tools, we've got them! Razor-Back's durable cushion grips and mid-handle grips absorb harsh vibrations and help reduce fatigue.





# DIGGING SHOVELS



Key	Item #	Description	UPC	Standard Pack		Pallet	
				Qty	Lbs	Qty	Lbs
A	2594700	Round Point, SuperSocket®, PowerStep®, 14-Gauge, Open-Back Blade, 28" Steel Reinforced Fiberglass Handle with Cushion D-Grip *	049206644854	4	20	120	837
B	2594200	Round Point, SuperSocket®, PowerStep®, 14-Gauge, #2, Open-Back Blade (9.5" x 12"), Dual Rivet, Hardwood Handle with Armor D-Grip *	049206634039	4	19.76	120	673.8
C	43069	Round Point, Forward-Turned Step. 14-Gauge, #2, Closed-Back Blade (9.5" x 12"). Dual Rivet, Extended Tab Socket. 30" Hardwood Handle with Armor D-Grip *	079617430692	6	28.32	240	1203.8
	43205	Round Point, Forward-Turned Step. 14-Gauge, #2, Open-Back Blade (9.5" x 12"). Dual Rivet, Extended Tab Socket. 30" Hardwood Handle with Armor D-Grip *	079617432054	6	27.36	240	1165.4
D	43201	Round Point, Rolled Step. 14-Gauge, #2, Open-Back Blade (9.5" x 12"). Dual Rivet, Extended Tab Socket. 30" Hardwood Handle with Armor D-Grip *	079617432016	6	27.6	270	1333
E	40176	Ceremonial Shovel, Chrome Finish with Matching Chrome D-grip and Hardwood Handle	079617401760	1	5.84	35	250
F	2594400	Round Point, SuperSocket®, PowerStep®, 14-Gauge, #2, Open-Back Blade (9.5"x12"), 48" Fiberglass Handle with 12" Mid-Grip *	049206633988	6	31.44	120	628.8
G	45000	Round Point, Forward-Turned Step. 14-Gauge, #2, Open-Back Blade with Reinforced Steel Backbone for Maximum Strength (9.5" x 12"). 48" Fiberglass Handle *	079617450003	3	16.71	240	1427.8
	45013	Round Point, Forward-Turned Step. 14-Gauge, #2, Closed-Back Blade with Reinforced Steel Backbone for Maximum Strength (9.5" x 12"). 48" Fiberglass Handle *	079617450133	6	35.28	240	1411.2
H	2593600	Round Point, SuperSocket®, PowerStep®, 14-Gauge, #2, Open-Back Blade (9.5"x12"), Dual Rivet, and 48" Hardwood Handle with 10" End-Grip *	049206633995	6	25	120	600
I	45530	Round Point, SuperSocket®, Forward-Turned Step, 14-Gauge, #2, Open-Back Blade (9.5"x12"), Dual Rivet, 48" Hardwood Handle *	049206631465	6	28.5	240	1231
J	45520	Round Point, Forward-Turned Step. 14-Gauge, #2, Open-Back Blade (9.5" x 12"). Dual Rivet, Extended Tab Socket. 48" Hardwood Handle *	079617455206	3	14.1	240	1128
	45657	Round Point, Forward-Turned Step. 14-Gauge, #2, Closed-Back Blade (9.5" x 12"). Dual Rivet, Extended Tab Socket. 48" Hardwood Handle	079617456579	6	28.56	240	1233.4
K	45519	Round Point, Rolled Step. 14-Gauge, #2, Open-Back Blade (9.5"x 12"). Dual Rivet, Extended Tab Socket. 48" Hardwood Handle *	079617455190	6	28.74	240	1149.6
L	40104	Irrigation Shovel, Rolled Step. #2, Open-Back Blade (9.25"x11.5"). 9" Socket. 48" Hardwood Handle *	049206127609	6	26.28	300	1410
M	40105	Clipped Point Rice Shovel, Rolled Step. #2, Open-Back Blade (9.25"x11"). 9" Socket. 48" Hardwood Handle	049206127593	6	22.44	300	1220

\* USA Made with US/Global Components

All product images included in this catalog reflect final brand aesthetics.





**F**

**G**

**H**

**I**



**J**

**K**

**L**

**M**





# TRANSFER SHOVELS



Key	Item #	Description	UPC	Standard Pack		Pallet	
				Qty	Lbs	Qty	Lbs
A	2594800	Square Point, Rolled Step, 14-Gauge, Open-Back Blade, 28" Steel Reinforced Fiberglass Handle with Cushion D-Grip *	049206644861	4	21	108	717
B	2594500	Square Point, Forward-Turned Step, 14-Gauge, #2, Open-Back Blade (9.5" x 12"), 10" Socket, 48" Fiberglass Handle with 12" Mid-Grip *	049206634060	4	21.92	112	613.76
C	44000	Square Point, Rolled Step, 14-Gauge, #2, Open-Back Blade (9.5" x 12"). 10" Socket, 48" Fiberglass Handle *	079617440004	6	36.06	240	1442.4
D	42116	Square Point, Forward-Turned Step, 14-Gauge, #2, Open-Back Blade (9.5" x 12"). Dual Rivet, Extended Tab Socket, 30" Hardwood Handle with Armor D-Grip *	079617421164	6	29.52	240	1251.8
E	2593700	Square Point, Forward-Turned Step, 14-Gauge, #2, Open-Back Blade (9.5" x 12"), Dual Rivet, Extended Tab Socket, and 48" Hardwood Handle with 10" End-Grip *	049206634077	4	25	120	681
F	44124	Square Point, Forward-Turned Step, 14-Gauge, #2, Open-Back Blade (9.5" x 12"). Dual Rivet, Extended Tab Socket, 48" Hardwood Handle *	079617441247	6	30.12	240	1204.8
G	44363	Square Point, Forward-Turned Step, 14-Gauge, #2, Closed-Back Blade (9.5" x 12"). Dual Rivet, Extended Tab Socket, 48" Hardwood Handle *	079617443630	6	31.98	240	1370.2
H	42101	Square Point, Rolled Step, 14-Gauge, #2, Open-Back Blade (9.5" x 12"). Dual Rivet, Extended Tab Socket, 30" Hardwood Handle with Armor D-Grip *	079617421010	6	30.06	240	1273.4
	44004	Square Point, Rolled Step, 14-Gauge, #2, Closed-Back Blade (9.5" x 12"). 10" Socket, 48" Fiberglass Handle *	079617440042	6	38.7	240	1548
H	44101	Square Point, Rolled Step, 14-Gauge, #2, Open-Back Blade (9.5" x 12"). Dual Rivet, Extended Tab Socket, 48" Hardwood Handle *	079617441018	6	30.96	132	762

\* USA Made with US/Global Components

All product images included in this catalog reflect final brand aesthetics.



# SOLID SHANK SHOVELS



Key	Item #	Description	UPC	Standard Pack		Pallet	
				Qty	Lbs	Qty	Lbs
I	43007	Solid Shank Round Point Shovel. No Step, #2 Blade (9"x9.75"). 24" Hardwood Handle with Armor D-Grip	079617430074	6	31.92	144	774.08
J	45019	Solid Shank Round Point Shovel. No Step, #2 Blade (9"x9.75"). 44" Hardwood Handle	079617450195	6	33.18	300	1659
	45020	Solid Shank Round Point Shovel. Forward Turned Step, #2 Blade (9"x9.75"). 44" Hardwood Handle	079617450201	6	31.68	300	1584
K	55221	Solid Shank Square Point Track Shovel. Forward Turned Step. 27" Hardwood Handle with Armor D-Grip	079617552219	6	32.1	144	770.4
L	42008	Solid Shank Square Point Shovel. No Step, #2 Blade (9.75"x12"). 24" Hardwood Handle with Armor D-Grip	079617420082	6	33.3	144	799.2
M	44009	Solid Shank Square Point Shovel. No Step, #2 Blade (9.75"x12"). 44" Hardwood Handle	079617440097	6	34.14	300	1798
N	40116	Solid Shank Irrigation Shovel. Round point, No Step, #2 (9"x9.75"). 44" Hardwood Handle	079617401166	6	32.74	300	1728
O	40143	Clipped Solid Shank Shovel, #2 Blade with Forward Turned Step	079617401432	6	27.18	300	1359
P	1537300	Caprock Irrigation Shovel, No Step. Solid Shank, #2 Blade (9"x9.75"). 9" Socket, 45" Solid Core Fiberglass Handle	049206153738	3	22.5	180	1421
Q	40139	Caprock Irrigation Shovel, No Step. Solid Shank, #2 Blade (9"x9.75"). 9" Socket, 44" Hardwood Handle	079617401395	6	31.2	180	976

All product images included in this catalog reflect final brand aesthetics.



# SPADES



Key	Item #	Description	UPC	Standard Pack		Pallet	
				Qty	Lbs	Qty	Lbs
A	47602	Drain Spade, Forward-Turned Step. 14-Gauge, Closed-Back Blade with Crimped Collar (4.75" x 14"). 9" Socket. 48" Fiberglass Handle	079617476027	3	11.31	144	624
B	47604	Drain Spade, Forward-Turned Step. 14-Gauge Closed-Back Blade with Crimped Collar (4.75" x 16"). 9" Socket. 30" Fiberglass Handle with Cushion D-Grip	079617476041	3	11.7	300	1261
C	47117	Drain Spade, Forward-Turned Step. 14-Gauge Closed-Back Blade (4.75" x 16"). 9" Socket. 48" Hardwood Handle	079617471176	6	26.58	150	746
D	2597400	Drain Spade, Forward-Turned Step, 14-Gauge Open-Back Blade (4.75" x 16"), 9" Socket, Hardwood Handle with Armor D-Grip	049206634145	4	16.96	168	712.32
	47103	Drain Spade, Forward-Turned Step. 14-Gauge Closed-Back Blade (4.75" x 16"). 9" Socket. 29" Hardwood Handle with Armor D-Grip	079617471039	6	25.79	300	1370
	47202	Drain Spade, Forward-Turned Step. 14-Gauge Closed-Back Blade (4.75" x 14"). 9" Socket. 29" Hardwood Handle with Armor D-Grip	079617472029	6	24.66	300	1304
	47110	Drain Spade, Solid Shank, 24" Hardwood Handle with Armor D-Grip	079617471107	3	29.4	210	2058
E	46200	Border Spade, Turned-Step. 14-Gauge, Open-Back Blade with Crimped Collar (7.375"x12"). 9" Socket, 48" Hardwood Handle	049206127616	6	26.4	300	1420
F	46201	Border Spade, Turned-Step. 14-Gauge, Open-Back Blade with Crimped Collar (7.375"x12"). 9" Socket. 28" Hardwood Handle with Armor D-Grip	049206127623	6	25.14	300	1355
G	48110	Post Spade, Forward-Turned Step. 14-Gauge (6.25" x 16"). 9" Socket. 29" Hardwood Handle with Armor D-Grip	079617481106	6	26.76	300	1409
	48102	Solid Shank 16" Post Spade Shovel. Forward-Turned Step. 24" Hardwood Handle with Armor D-grip	079617481021	6	29.58	144	717.92
H	2451700	All-Steel Spade, All Steel construction. 15" Blade. Rubber Step on both sides	049206245174	2	15	144	1049.4
	163105000	All-Steel Spade, All Steel construction. 13" Blade. Rubber Step on both sides	049206630222	2	15	144	1049.4

All product images included in this catalog reflect final brand aesthetics.



# TRENCHING & CLEAN OUT SHOVELS



Key	Item #	Description	UPC	Standard Pack		Pallet	
				Qty	Lbs	Qty	Lbs
I	47138	4" Trenching Spade, Rolled Step. 14-Gauge Blade with Dura-Torque® Crimped Collar (4" x 11.5"). 9" Socket. 54" Fiberglass Handle	079617471381	3	9.48	288	910.08
J	47171	4" Trenching Spade, Rolled Step. 14-Gauge Open-Back Blade (4" x 11.5"). 9" Socket. 48" Hardwood Handle	079617471718	6	19.38	300	1060
K	47174	5" Ditching Spade, Rolled Step. 14-Gauge Blade with Dura-Torque® Crimped Collar (5" x 11.5"). 9" Socket. 54" Fiberglass Handle	079617471749	3	10.38	288	996.48
L	47115	5" Ditching Spade, Rolled Step. 14-Gauge Open-Back Blade (5" x 11.5"). 9" Socket. 48" Hardwood Handle	079617471152	6	23.16	300	1158
M	47033	3" Clean Out, Forward-Turned Step. Industrial Gauge Blade (3" x 11"). 43" Fiberglass Handle	079617470339	6	24.28	216	919.12
	47034	4" Clean Out, Forward-Turned Step. Industrial Gauge Blade (4" x 11"). 43" Fiberglass Handle	079617470346	6	25.38	300	1320
	47035	5" Clean Out, Forward-Turned Step. Industrial Gauge Blade (5" x 11"). 43" Fiberglass Handle	079617470353	6	27.54	300	1428
	47036	6" Clean Out, Forward-Turned Step. Industrial Gauge Blade (6" x 11"). 43" Fiberglass Handle	079617470360	6	28.8	300	1491
N	47023	3" Clean Out, Forward-Turned Step. Industrial Gauge Blade (3" x 11"). 48" Hardwood Handle	079617470230	6	21.36	420	1577
	47024	4" Clean Out, Forward-Turned Step. Industrial Gauge Blade (4" x 11"). 48" Hardwood Handle	079617470247	3	12.09	300	1778
	47025	5" Clean Out, Forward-Turned Step. Industrial Gauge Blade (5" x 11"). 48" Hardwood Handle	079617470254	6	25.08	300	1254
	47026	6" Clean Out, Forward-Turned Step. Industrial Gauge Blade (6" x 11"). 48" Hardwood Handle	079617470261	6	29.64	300	1482

All product images included in this catalog reflect final brand aesthetics.



# ALUMINUM SCOOPS



Key	Item #	Description	UPC	Standard Pack		Pallet	
				Qty	Lbs	Qty	Lbs
A	53129	Aluminum Scoop. #12 Blade. 29" Fiberglass Handle with Power D-Grip	049206129184	6	26.7	144	740
B	53128	Scoop. Western-Pattern Aluminum. #12 Blade. 31" Hardwood Handle with Armor D-Grip	079617531283	6	29.02	144	787.48
C	53130	Scoop. Western-Pattern Aluminum. #14 Blade. 31" Hardwood Handle with Armor D-Grip	079617531306	6	18	72	523
	53173	Scoop. Western-Pattern Aluminum. #14 Blade. 36" Hardwood Handle with Armor D-Grip	079617531733	6	30.42	108	324
D	53127	Scoop. Western-Pattern Aluminum. #10 Blade. 48" Hardwood Handle	079617531276	6	26.52	54	315
E	50154	Scoop. Eastern-Pattern Aluminum. #2 Blade. 31" Hardwood Handle with Armor D-Grip	079617501545	6	22.56	72	716.8
F	50155	Scoop. Eastern-Pattern Aluminum. #2 Blade. 48" Hardwood Handle	079617501552	6	13.99	72	133.99
G	80A	Aluminum General Purpose Shovel, #2 Blade, 34" Hardwood Handle with Cushion D-Grip	027997380540	6	20.5	72	313
H	54247	Aluminum Scoop. #2 Blade. 46" Hardwood Handle	049206129191	6	21	72	330
I	79806	General Purpose Scoop. Aluminum. Blade size (11"x13.5"). 46" Hardwood Handle	049206129207	6	16	72	270

All product images included in this catalog reflect final brand aesthetics.



# ALUMINUM SCOOPS





# STEEL SCOOPS



Key	Item #	Description	UPC	Standard Pack		Pallet	
				Qty	Lbs	Qty	Lbs
A	50139	Eastern Pattern Steel Scoop, #2 (11"x15"), Armor D-Grip. 30" Hardwood Handle	079617501392	3	15.24	216	1168.28
	1443600	Eastern Pattern Steel Scoop, #4, Armor D-Grip. 30" Hardwood Handle	049206144361	3	16.5	108	688
	50143	Eastern Pattern Steel Scoop, #6, Armor D-Grip with 30" Solid Hardwood Handle	079617501439	3	17.97	192	1221.08
B	50140	Eastern Pattern Steel Scoop, #2 (11"x15"), 54" Long Hardwood Handle	079617501408	3	16.2	168	776.88
C	53117	Western Pattern Steel Scoop, #8, Armor D-Grip. 30" Hardwood Handle	079617531177	3	18.96	72	535
	53119	Western Pattern Steel Scoop, #10, Armor D-Grip. 30" Hardwood Handle	079617531191	3	20.97	72	583.28
	53121	Western Pattern Steel Scoop, #12, Armor D-Grip. 30" Hardwood Handle	079617531214	3	21.87	108	858.32
D	54109	Coal-Street Steel Scoop, #2 (11.5" x 14.5"), Armor D-Grip. 30" Hardwood Handle	079617541091	3	18.372	216	1413.784
	79804	Coal-Street Steel Scoop, #4 (14.5"x15.5"), Armor D-Grip with 40"Hardwood Handle	079617798044	3	16.68	144	800.64
E	54246	Coal-Street Steel Scoop, #2 (11.5"x14.5"), 48" Long Hardwood Handle	079617542463	3	33.72	120	674.4
F	79809	General Purpose Steel Scoop, #2, Armor D-Grip. 29" Hardwood Handle	079617798099	3	15.33	102	576
G	79805	General Purpose Steel Scoop, #2 (11.5"x14.5"), 48" Long Hardwood Handle	079617798051	3	14.46	192	925.44
H	1423000	Steel Furnace Scoop, #2, Armor D-Grip. 30" Hardwood Handle	049206142305	3	14	240	1214

All product images included in this catalog reflect final brand aesthetics.





**D**



**E**



**F**



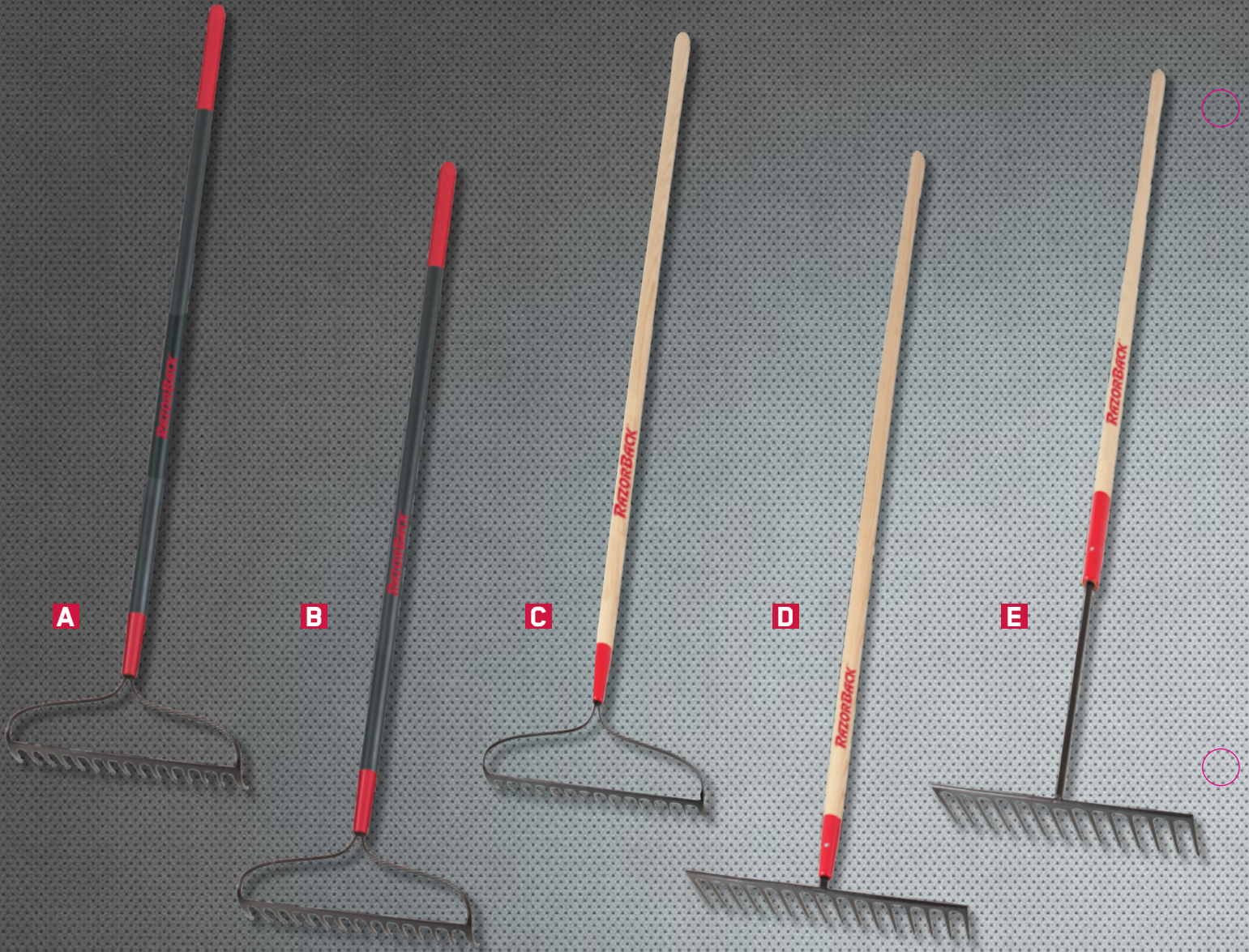
**G**



**H**



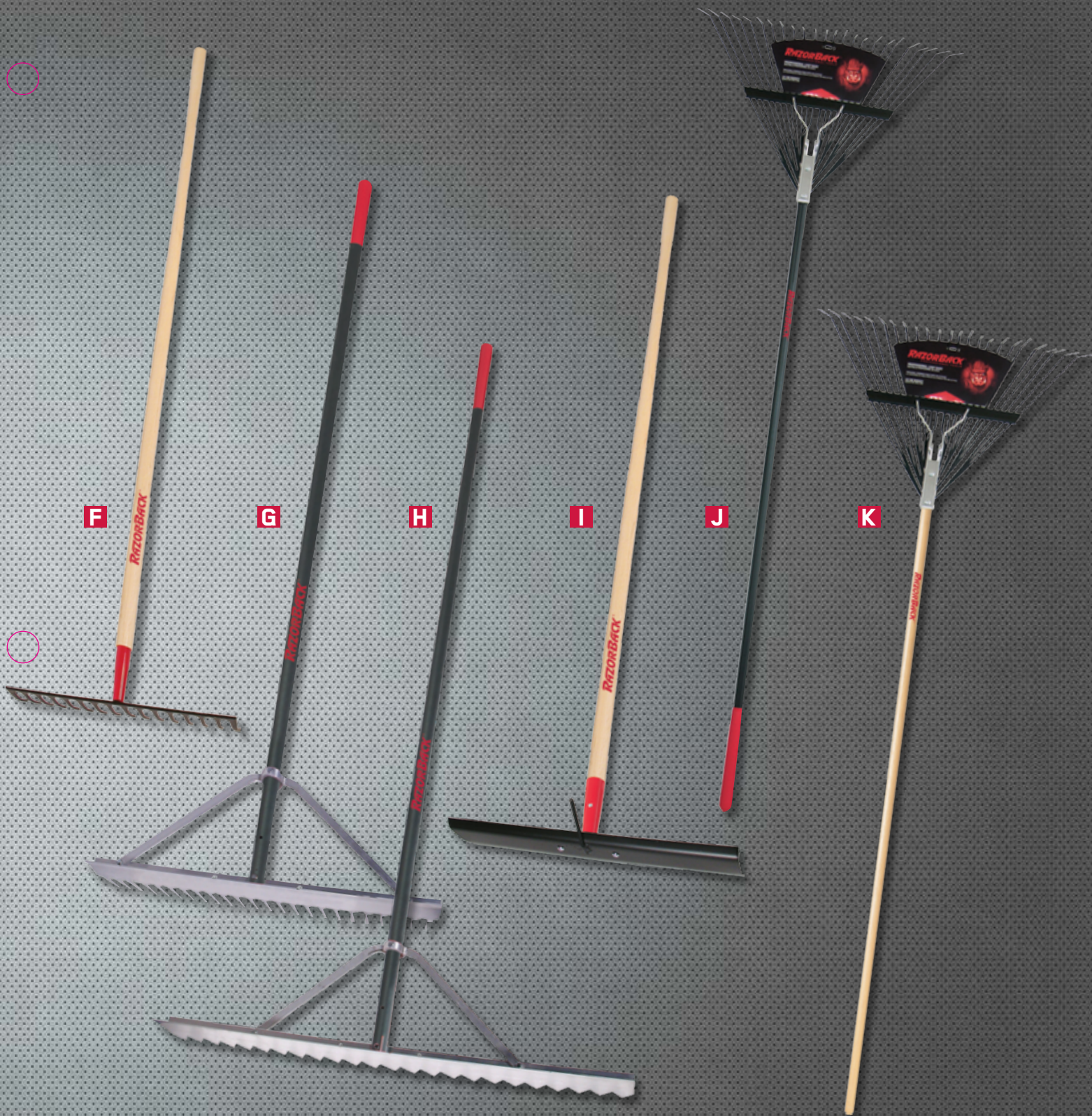
# RAKES



Key	Item #	Description	UPC	Standard Pack		Pallet	
				Qty	Lbs	Qty	Lbs
A	2853900	Bow Rake, Extra Thick End Teeth on 15-Tine One Piece Forged Head, (16" x 3.25"), 60" Fiberglass Handle with 12" Mid-Grip	049206633698	6	19.92	192	637.44
B	63184	Bow Rake, One Piece Forged, Extra Thick End 15-Tine Head (16" x 3.25"), 60" Fiberglass Handle	079617631846	3	9.36	420	1624
C	63141	Bow Rake, One Piece Forged, Extra Thick End Teeth, 15-Tine, (16" x 3.25"), 66" Hardwood Handle	079617631419	6	21.9	420	1624
D	63122	Road/Stone Rake, One Piece Forged, 16 Extra Heavy Straight Teeth Head (17.75" x 4"), 66" Hardwood Handle	079617631228	3	12.18	210	943.6
	63121	Road/Stone Rake, One Piece Forged, 14 Extra Heavy Straight Teeth Head (15.5" x 4"), 66" Hardwood Handle	079617631211	3	11.88	210	922.6
E	63125	Asphalt/Tar Rake, Forged, 14 Teeth Head (16" x 4") Nailed to Hardwood Handle, 8" Steel Tube with Cap, 60" Hardwood Handle	079617631259	3	18.22	180	1184.2
F	63111	Level Head Rake, One Piece Forged, 16 Curved Teeth Head (17" x 3.25"), 66" Hardwood Handle	079617631112	6	21.84	210	835.4
	63112	Level Head Rake, One Piece Forged, 14 Curved Teeth Head (15" x 3.25"), Steel Ferrule, 66" Hardwood Handle	049206127661	6	17.1	180	590
G	63136	24" Aluminum Landscape Rake, Wrap-Around Brace, 66" Powder-Coated Aluminum Handle with 5.5" End Grip	079617631365	6	27.08	168	537.6
	63137	30" Aluminum Landscape Rake, Wrap-Around Brace, 66" Powder-Coated Aluminum Handle with 5.5" End Grip	079617631372	6	21.78	168	609.84
	63000	36" Aluminum Landscape Rake, Wrap-Around Brace, 66" Powder-Coated Aluminum Handle with 5.5" End Grip	079617630009	6	30.14	168	759.36
H	63133	36" Aluminum Asphalt Lute Rake, Wrap-Around Brace, 82" Powder-Coated Aluminum Handle with 5.5" End Grip	079617631334	6	34.68	90	395.1

All product images included in this catalog reflect final brand aesthetics.





Key	Item #	Description	UPC	Standard Pack		Pallet	
				Qty	Lbs	Qty	Lbs
I	83154	Concrete Rake with Rebar Hook, (20" x 4"), Steel Socket Nailed to 60" Hardwood Handle	079617831543	6	29.56	180	886.8
	83148	Concrete Rake, (20" x 4"), Steel Socket Nailed to 60" Hardwood Handle	079617831482	6	31	162	907.23
J	2915212	24 Tine Steel Leaf Rake, Fiberglass Handle, Cushion Grip	049206633889	12	35	240	730
K	2911200	24 Tine Steel Leaf Rake, 54" Bolt-Through Hardwood Handle	049206644533	12	32.5	240	686

All product images included in this catalog reflect final brand aesthetics.



# SCRAPERS



Key	Item #	Description	UPC	Standard Pack		Pallet	
				Qty	Lbs	Qty	Lbs
A	81104	Scraper/Chopper, Cold Forged Blade with Sharp Edge (4" x 9"). 54" Hardwood Handle	079617811040	6	31.2	240	1296
B	81109	Scraper/Chopper, Cold Forged Blade with Sharp Edge (7" x 9"). 54" Hardwood Handle	079617811095	6	31.74	210	1181.9
C	81100	Scraper/Chopper, Cold Forged Blade with Sharp Edge (7" x 9"). 34" Hardwood Handle with Power D-Grip	079617811002	6	25	144	681
D	2451400	22" Floor Scraper, 60" Hardwood Handle	049206245143	6	35	60	437.1
	2451500	18" Floor Scraper, 60" Hardwood Handle	049206245150	6	30.86	102	607
	2451600	14" Floor Scraper, 60" Hardwood Handle	049206245167	6	30	108	580
E	83111	24" Barn Scraper, reversible, 14-Gauge Steel Blade (24"x6"). 8" Taper-Tight Ferrule with Cap. 60" Hardwood Handle	049206124585	6	44.52	144	1108.5
F	81240	Scraper, Forged, Industrial Gauge, Solid Shank Blade (8.5" x 6.25"). 48" Hardwood Handle	079617812405	3	13.71	240	1137.8
G	78202	Sidewalk/Ice Scraper, Forged, Industrial Gauge, Socket Pattern, Forged Blade (7" x 6"). 54" Hardwood Handle	079617782029	3	11.37	300	1184
H	81106	Ice Chisel, Forged, Industrial Gauge, Socket Pattern, Forged Blade (3.75" x 6"). 48" Hardwood Handle	079617811064	3	10.74	180	755.4

All product images included in this catalog reflect final brand aesthetics.





Key	Item #	Description	UPC	Standard Pack		Pallet	
				Qty	Lbs	Qty	Lbs
I	70009	Meadow or Blackland Hoe, Forged, Shank-Pattern. Head (7"x3.5"). 60" Hardwood Handle	049206645745	6	15.5	300	886
	70110	Blackland/Southern Meadow Hoe, Forged, Socket Pattern with Beveled Blade (7" x 3.5"). 60" Hardwood Handle	079617701105	6	17.82	300	931
J	71113	Garden Hoe, Forged, Shank-Pattern (6.25"x4.25"). 52" Hardwood Handle	049206645738	6	14.5	360	964
K	71112	Cotton Hoe, Forged, Gooseneck Shank Pattern with Beveled Blade (7" x 5.25"). Steel Ferrule. 60" Hardwood Handle	079617711128	6	20.28	300	1085
L	66135	Onion Hoe, Forged, Square-Top. Head (7"x1.75"). 52" Hardwood Handle	049206645752	6	13.44	300	713
M	67126	6" Beet Hoe, Forged, Hardwood Handle	079617671262	6	14.52	300	767
	67127	Nursery / Beet Hoe, Forged. Socket-Pattern. Head (7"x3.5"). 52" Hardwood Handle	079617671279	6	16.8	300	930
N	66136	Scuffle Hoe, Forged Bent-Shank. Head (7"x4"). 60" Hardwood Handle	049206645769	6	14.5	300	851
O	66137	Floral Scuffle Hoe, Forged Head (6.5"x3"). 48" Hardwood Handle	049206645776	6	18	300	990
P	66158	10" Mortar Mixer. Forged, Gooseneck Shank-Pattern. Perforated Blade (10" x 6"). 66" Hardwood Handle	079617661584	3	13.71	150	730.5
	66157	9" Mortar Mixer. Forged, Gooseneck Shank-Pattern. Perforated Blade (9" x 6"). 66" Hardwood Handle	079617661577	3	12.48	150	671
	66123	7" Mason/Plaster Hoe. Forged, Gooseneck Shank-Pattern. Perforated Blade (7" x 4.5"). 54" Hardwood Handle	079617661232	6	16.32	360	1026.2
Q	USF6	"McLeod" Fire Tool, Head (9"x9.75"). 3.5" Teeth. 48" Hardwood Handle	027997240080	3	15.5	72	452

All product images included in this catalog reflect final brand aesthetics.



# HOOKS / CULTIVATORS / CUTTERS



Key	Item #	Description	UPC	Standard Pack		Pallet	
				Qty	Lbs	Qty	Lbs
A	62217	Bean / Weed Hook, Blade (3.5"), 42.5" Length, 10" Leather Strap	049206127647	6	8	360	525
B	62219	Grass Hook, Short Hardwood Handle. Double Riveted Hardwood Handle	049206124608	5	4	540	607
C	62220	Grass Hook, Long Hardwood Handle. Detachable Blade, 36" Long Hardwood Handle	049206127685	5	8	480	810
D	75144	Potato/Lightweight Refuse Hook. Forged, 4-Broad Oval Tines with Diamond Points. Head (6" x 6.5"). 54" Hardwood Handle	079617751445	3	8.301	150	830
	75138	Potato/Refuse Hook. Forged, 4-Broad Oval Tines with Diamond Points. Head (7" x 7.5"). 54" Hardwood Handle	079617751384	3	12.54	240	1074.2
E	75212	Manure/Garbage/Refuse Hook. Forged, 4-Tine Head (8.5" x 9"). 60" Hardwood Handle	079617752121	3	11.4	150	641
F	68115	Cultivator. Forged, 4-Tine, Curved Head (5"). 54" Hardwood Handle	079617681155	6	14.1	300	776
G	62221	Double Edge Weed and Brush Cutter, Ditch Bank Blade, 11.5" Blade. 30" Hardwood Handle	049206127692	4	13	240	925
H	62222	Double Edge Weed and Brush Cutter, Ditch Bank Blade, 16" Blade. 36" Hardwood Handle	049206127708	4	15.76	144	635
I	62223	Double Edge Weed and Brush Cutter, Ditch Bank Blade, 16" Blade. 40" Hardwood Handle	049206127715	4	21	120	710
J	62224	Machete Corn Knife, Single-Edge Blade, Hardwood Handle, 21.5" Length	049206124592	6	6.5	648	760

All product images included in this catalog reflect final brand aesthetics.





Key	Item #	Description	UPC	Standard Pack		Pallet	
				Qty	Lbs	Qty	Lbs
K	73115	Hay Fork. Forged. 3-Oval Tine Head (7.25" x 12"). 48" Hardwood Handle	079617731157	3	19.44	315	2111.2
L	74102	Manure Fork. Forged. 4-Oval Tine Head (8.25" x 12.5"). 54" Hardwood Handle	079617741026	3	11.1	240	1276.5
M	74113	Manure Fork. Forged. 5-Oval Tine Head (9" x 12.5"). 48" Hardwood Handle	079617741132	3	12.13	315	1384.65
	74114	Manure Fork. Forged. 5-Oval Tine Head (9.5" x 12.5"). 54" Hardwood Handle	079617741149	3	12.13	315	1344.65
N	74124	Manure Fork. Forged. 6-Oval Tine Head (9.5" x 12.5"). 54" Hardwood Handle	079617741248	3	13.24	210	1501.2
O	2827200	Compost Fork. Forged. 5-Oval Tine Head (9"x12.5"). 36" Hardwood Handle with Poly D-Grip	049206127654	3	12.6	120	580
P	73141	Barley Fork. Forged. 5-Oval Tine, 3.5" Spacing Head (14.5" x 18"). 48" Hardwood Handle	079617731416	3	13.11	315	1447.55
Q	73145	Barley Fork. Forged. 5-Oval Tine, 3.25" Spacing Head (13" x 18.5"). 34" Hardwood Handle with Armor D-Grip	079617731454	3	13.8	150	731
R	76125	Ensilage Mulch Fork. Forged. 10-Oval Tine, 1.25" Spacing Head (16" x 16"). 30" Hardwood Handle with Armor D-Grip	079617761253	3	22.17	180	1370.2
	76126	Ensilage Mulch Fork. Forged. 10-Oval Tine, 1.25" Spacing Head (16" x 16"). 48" Hardwood Handle	079617761260	3	23.52	144	1176
	76144	Cotton Seed Fork. Forged. 10-Diamond Tine, 1.50" Spacing Head (15.75" x 16"). 30" Hardwood Handle with Armor D-Grip	079617761444	3	23.4	72	643
S	76107	Stone/Ballast Fork. Forged. 10-Square Tine, 1" Spacing Head (10" x 13.5"). 30" Hardwood Handle with Armor D-Grip	079617761079	3	19.86	150	1034
T	72103	Spading Fork. Forged. 4-Tine, Heavy-Duty Head (7.375" x 11.5"). 30" Hardwood Handle with Armor D-Grip	079617721035	3	14.1	210	1027

All product images included in this catalog reflect final brand aesthetics.



# POST HOLE DIGGERS



Key	Item #	Description	UPC	Standard Pack		Pallet	
				Qty	Lbs	Qty	Lbs
A	78006	Post Hole Digger, 48" Hercules Pattern, 2 Piece Riveted High Carbon Steel Blades. Fiberglass Handles. 6" Point Spread	079617780063	2	20.88	126	1360
B	78007	Post Hole Digger, 48" Hercules Pattern, 2 Piece Riveted High Carbon Steel Blades. Tubular Steel Handles. 6" Point Spread	079617780070	2	29.54	128	2016
C	78570	Adjustable Auger, Riveted Blades adjust from 6 to 8". 44" Welded T-Handles with End Grips. All Steel construction	079617785709	2	25.88	20	308.8
D	1712000	DigEZ <sup>®</sup> , Industrial Post Hole Digger, 40% Less Handle Travel Distance. Innovative Handle Design Eliminates Knuckle Collision	049206171206	2	32	60	702
E	78005	Post Hole Digger, 48" Hercules Pattern, 2 Piece Riveted High Carbon Steel Blades, 48" Hardwood Handles. 6" Point Spread	079617780056	2	22.4	126	1451.2
F	78004	Post Hole Digger, 2 Piece Riveted High Carbon Steel Blades. 48" Atlas Pattern, Hardwood Handles	079617780049	6	30.8	144	1500

All product images included in this catalog reflect final brand aesthetics.





Key	Item #	Description	UPC	Standard Pack		Pallet	
				Qty	Lbs	Qty	Lbs
G	2594100	Shingle Remover. Loosens and removes nails and shingles secured into rooftop areas . D-Top Handle is angled for comfort in standing or sitting position on the roof. (9" x 4.5") 47.25" Fiberglass Handle	049206633612	3	17.46	48	319.36
H	46144	Shingle Remover Replacement Blade. Used to keep shingle remover working effectively and is easy to fasten. (1.5" x 6.25")	049206632295	6	11.36	972	1595.2
I	46141	Roof Shovel, Notched-Edge Shovel for Removing Shingles. Turned-Step (7.375" x 12"). 9" Socket. Welded Fulcrum for Leverage. 48" Hardwood Handle	079617461412	3	14.37	288	1484
J	46142	Roof Shovel, Notched-Edge Shovel for Removing Shingles. Turned-Step (7.375" x 12"). 9" Socket. Welded Fulcrum for Leverage. 30" Hardwood Handle with Armor D-Grip	079617461429	3	15.99	288	1606.04
K	46147	Rofer Spade, 7" Blade, 36" Hardwood Handle with Poly D-Grip	049206644892	6	27	96	500
L	46146	Rofer Spade, 5" Blade, 19" Hardwood Handle	049206644885	6	14	216	565
M	30004	8"x8" Tamper, Steel Head and Handle, Cushion Grip	079617300049	1	10.62	208	2284.6
	30005	10"x10" Tamper, Steel Head and Handle, Cushion Grip	079617300056	1	13	70	950
N	61108	Half Moon Edger, Turned-Step. Industrial Gauge, Socket Pattern Blade (9" x 4.75"). 48" Hardwood Handle	079617611084	6	22.68	300	1175
O	62218	Sod Lifter and Sand Trap Edger, Blade (9"x5"), 31" Hardwood Handle with Armor D-Grip	049206127678	3	15	120	680



# RAZORBACK®

PROFESSIONAL TOOLS

## WHEN SAFETY MATTERS

### SAFE-LOCK™

Steel-anchored core for maximum security and head retention



### FIBERGLASS CORE REINFORCED LANYARD HOLE

Provides strength and durability

• Lanyard not included



### MACHINED FINISH

For consistency and maximum durability

### TRIPLE LAYER OVERSTRIKE PROTECTION

For enhanced durability

### SOFT GRIP HANDLE

Dampens vibration

### “BASEBALL BAT” SHAPED END

For a secure grip

The above features available in the following tools:

- Sledgehammers
- Mauls
- Picks

## LIFETIME WARRANTY





Key	Item #	Description	UPC	Qty	Lbs
A	RBSTKHEADER	Razor-Back Striking Tool Header for display rack "STKDISPLAY"	N/A	1	2
B	STKDISPLAY	Striking Tool Rack (Tools and Header Sold Separately)	N/A	1	36



# FIBERGLASS HANDLE STRIKING TOOLS



Key	Item #	Description	UPC	Standard Pack		Pallet	
				Qty	Lbs	Qty	Lbs
A	3117000	Sledgehammer, #16, Double Face, SAFE-LOCK™, 34" Fiberglass Handle	049206107649	2	36.25	100	1850
	3116000	Sledgehammer, #12, Double Face, SAFE-LOCK™, 34" Fiberglass Handle	049206107632	2	28.75	100	1485
	3115000	Sledgehammer, #10, Double Face, SAFE-LOCK™, 34" Fiberglass Handle	049206107656	4	45.25	168	1950
B	3113000	Sledgehammer, #8, Double Face, SAFE-LOCK™, 34" Fiberglass Handle	049206107663	4	39	168	1650
	3112000	Sledgehammer, #6, Double Face, SAFE-LOCK™, 34" Fiberglass Handle	049206107625	4	33.5	168	1455
	3111000	Sledgehammer, #4, Double Face, SAFE-LOCK™, 34" Fiberglass Handle	049206107526	4	20.5	480	2450
D	3118000	Wood Splitter Maul, #8, SAFE-LOCK™, 34" Fiberglass Handle	049206107588	4	42	168	1785
E	4112000	Michigan Axe, Single Blade, #3.5, 33" Fiberglass Handle	049206107601	4	24.5	300	1875
F	4114000	Super Splitter, #4, 33" Fiberglass Handle	049206107618	4	27	180	1255



# FIBERGLASS HANDLE STRIKING TOOLS



Key	Item #	Description	UPC	Standard Pack		Pallet	
				Qty	Lbs	Qty	Lbs
G	4222000	Compact Axe, #1.25, 14" Fiberglass Handle	049206107595	6	12	504	1050
H	2517500	Multi-Use Demolition Hammer, #3, Steel Handle	049206251755	6	22	252	964
I	4118000	Pick Mattock, #5, SAFE-LOCK™, Fiberglass Handle	049206107564	4	30.5	92	745
	4115000	Pick Mattock, #2.5, SAFE-LOCK™, Fiberglass Handle	049206107557	4	20.5	168	900
J	4120000	Trenching Pick Mattock, #5.5, SAFE-LOCK™, Fiberglass Handle	049206107533	4	32.75	72	630
K	4119000	Clay Pick, #6, SAFE-LOCK™, Fiberglass Handle	049206107540	4	34.2	88	780
L	4117000	Cutter Mattock, #5, SAFE-LOCK™, Fiberglass Handle	049206107571	4	30.5	80	745







# ***RAZOR-BACK***®

## **On the Job!**







# **RAZORBACK<sup>®</sup>**

**PROFESSIONAL TOOLS**

**80**  
**YEARS**

Quality Tools for  
Professionals

Since 1936



# INDEX

30004	18	47115	6	63184	11	83154	12
30005	18	47117	5	66123	14	1423000	9
40104	1	47138	6	66135	14	1443600	9
40105	1	47171	6	66136	14	1537300	4
40116	4	47174	6	66137	14	1712000	17
40139	4	47202	5	66157	14	2451400	13
40143	4	47602	5	66158	14	2451500	13
40176	1	47604	5	67126	14	2451600	13
42008	4	48102	5	67127	14	2451700	5
42101	3	48110	5	68115	15	2517500	22
42116	3	50139	9	70009	14	2593600	1
43007	4	50140	9	70110	14	2593700	3
43069	1	50143	9	71112	14	2594100	18
43201	1	50154	7	71113	14	2594200	1
43205	1	50155	7	72103	16	2594400	1
44000	3	53117	9	73115	16	2594500	3
44004	3	53119	9	73141	16	2594700	1
44009	4	53121	9	73145	16	2594800	3
44101	3	53127	7	74102	16	2597400	5
44124	3	53128	7	74113	16	2826500	16
44363	3	53129	7	74114	16	2827200	16
45000	1	53130	7	74124	16	2853900	11
45013	1	53173	7	75138	15	2911200	12
45019	4	54109	9	75144	15	2915212	12
45020	4	54246	9	75212	15	3111000	21
45519	1	54247	7	76107	16	3112000	21
45520	1	55221	4	76125	16	3113000	21
45530	1	61108	18	76126	16	3115000	21
45657	1	62217	15	76144	16	3116000	21
46141	18	62218	18	78004	17	3117000	21
46142	18	62219	15	78005	17	3118000	21
46144	18	62220	15	78006	17	4112000	21
46146	18	62221	15	78007	17	4114000	21
46147	18	62222	15	78202	13	4115000	22
46200	5	62223	15	78570	17	4117000	22
46201	5	62224	15	79804	9	4118000	22
47023	6	63000	11	79805	9	4119000	22
47024	6	63111	11	79806	7	4120000	22
47025	6	63112	11	79809	9	4222000	22
47026	6	63121	11	81100	13	163105000	5
47033	6	63122	11	81104	13	80A	7
47034	6	63125	11	81106	13	RBSTKHEADER	20
47035	6	63133	11	81109	13	STKDISPLAY	20
47036	6	63136	11	81240	13	USF6	14
47103	5	63137	11	83111	13		
47110	5	63141	11	83148	12		



# **RAZOR-BACK<sup>®</sup>**

**PROFESSIONAL TOOLS**

© Razor-Back Professional Tools<sup>®</sup>

465 Railroad Ave.  
Camp Hill, PA 17011

1-800-393-1846  
[www.Razor-Back.com](http://www.Razor-Back.com)

Follow us on  
**Twitter**   
@Razor\_BackTools

Like us on  
**Facebook**   
[Facebook.com/Razor.BackProfessionalTools](https://Facebook.com/Razor.BackProfessionalTools)