

# Barrette

OUTDOOR LIVING® 



**RAILING**  
2021 CATALOG

# WHY CHOOSE RDI BY BARRETTE OUTDOOR LIVING

Barrette Outdoor Living provides the broadest selection of outdoor living products of any manufacturer. From fencing, to railing and decking to lattice and outdoor accessories — we have everything you need to create your backyard oasis. Our North American factories proudly focus on innovation, quality and improvement.

**WE CREATE.** Barrette Outdoor Living doesn't just follow industry standards — we create them by embracing new technology and pushing the boundaries of manufacturing, all while maintaining a clear focus on product excellence and customer service. We confront every challenge with an unparalleled level of energy and ingenuity.

**WE INNOVATE.** Holding more than 100 patents in product design, machinery and installation processes, Barrette Outdoor Living leads the industry with its advanced mechanical innovation and state-of-the-art manufacturing. Our commitment to quality is evident through our product testing and stringent quality control standards.

**WE DIFFERENTIATE.** Our team has their fingers on the pulse of the industry, using customer feedback to fill our pipelines with new and innovative products and constantly improve our offerings. This knowledge — combined with our innovation and manufacturing systems — enables Barrette Outdoor Living to produce quality products at unparalleled capacity.





## TABLE OF CONTENTS

### COMPOSITE RAILING

TRANSFORM RAILING 4

### ALUMINUM RAILING

HIDEAWAY PRIVACY RAILING 12

AVALON ALUMINUM RAILING 18

### STEEL RAILING

METALWORKS EXCALIBUR 28

### VINYL RAILING

ENDURANCE ORIGINAL RAIL 36

FINYL LINE RAIL 46

TITAN PRO RAIL 58

ADA HAND RAIL 64

LED LIGHTING 70

OUTDOOR ACCENTS 74

DECORATIVE SCREEN PANELS 76

LATTICE 77

# TRANSFORM®

**TRANSFORM** is made from precision-engineered Compositcore® – a capped composite material that contains no wood or organic fibers and outperforms with superior resistance to moisture, mold, warping, and staining. Transform's 100% acrylic exterior surface provides long lasting color and a lightly textured, low-maintenance durable finish.





## FEATURES & BENEFITS

- State-of-the-art Compositore® core with acrylic cap is weather resistant
- Simple level and stair baluster attachment eliminates tedious nailing and screwing
- Unique hidden bracket design used for level, stair, and angles provides a clean, finished look
- Mix'n'match with Avalon Aluminum Railing® or MetalWorks Excalibur® steel railing for a custom look



Satin White



Wheat

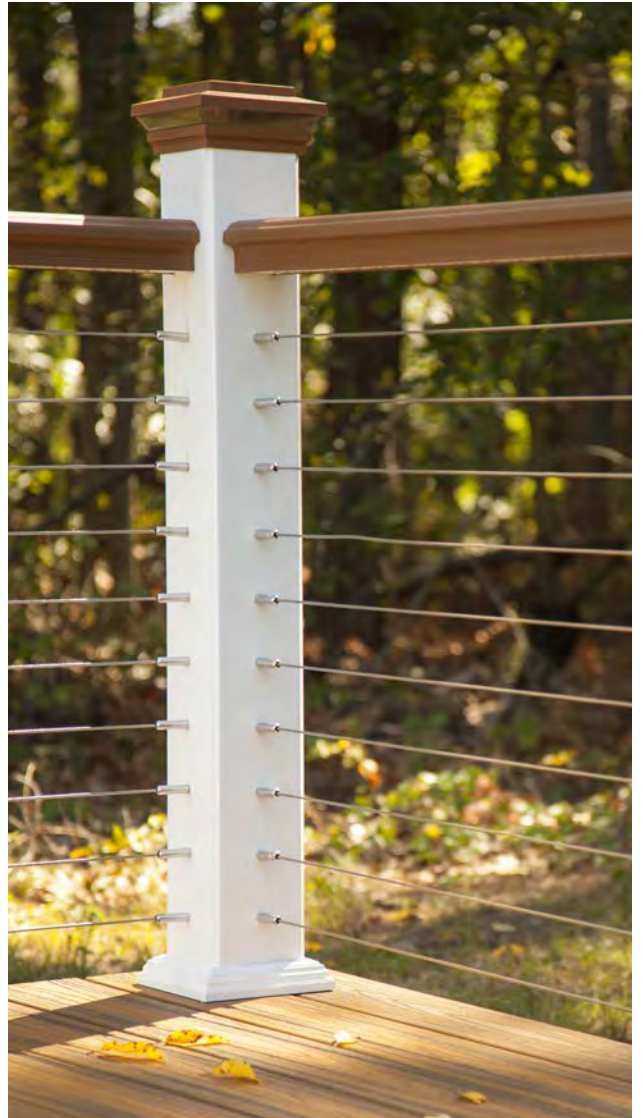


Caramel



Ironstone

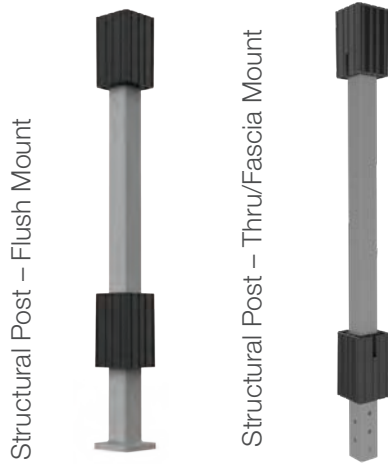
Colors reproduced in print may vary from actual colors. Please see your dealer for physical color samples.



# HOW TO ORDER

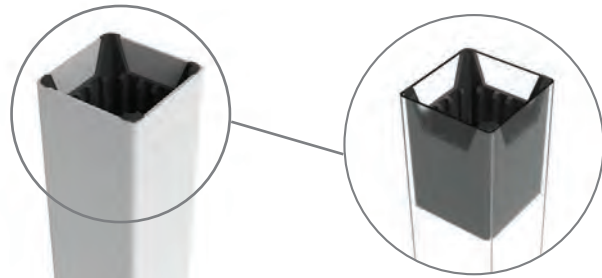
## SELECT A POST (IF YOUR INSTALLATION REQUIRES A STRUCTURAL POST)

### 1a CHOOSE A STRUCTURAL POST



- Available for 36" and 42" heights.

### 1b CHOOSE A POST SLEEVE



- 39", 54", and 120" lengths available.
- Each post sleeve comes with 2 post inserts; can also be purchased separately for use when cutting down 120" post sleeve.

## 2 SELECT YOUR POST ACCESSORY & LIGHTING OPTIONS IN MATCHING OR COMPLEMENTARY COLORS

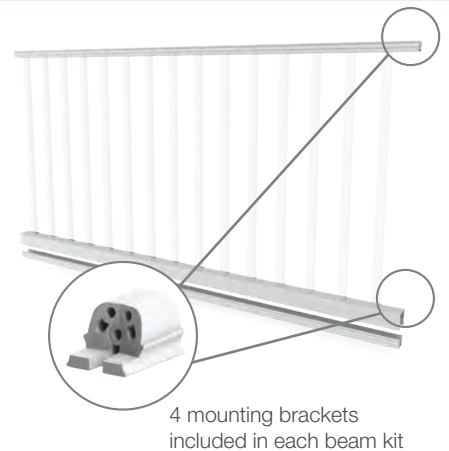


### 3a SELECT YOUR RAIL KIT

- Rail kits include bottom beam, bottom rail, top beam, mounting brackets, mounting hardware, support foot (1 for 6', 2 for 8') and balusters. Available in Satin White only, with square balusters. **If purchasing a full rail kit, skip to Step 5.**

### 3b SELECT YOUR BEAM KIT

- 6' or 8' (true length).
- Can be used for level or stair applications.
- Beam kits include bottom beam, bottom rail, top beam, mounting brackets, mounting screws, and support foot.
- Purchase a square/round baluster beam kit or a cable rail beam kit.



## 4 SELECT YOUR LEVEL OR STAIR BALUSTERS



1 1/8" Square (color of your choice)

- For finished rail heights of 36" & 42".
- Square balusters include baluster plugs.
- Square stair balusters are cut on a 32° angle.



3/4" Black Round Aluminum

- For finished rail heights of 36" & 42".
- Baluster shoes sold separately, in boxes of 20.
- Stair baluster shoes are designed for stair angles 32-38°.



Cable Rail Infill

- MUST be installed with wooden 4" x 4" post.
- Purchase your beam kit, cable and fittings.
- Can be used for level and stair application.
- Bottom beam optional – with bottom beam one less pair of fittings would be used.

## 5 SELECT YOUR TOP RAIL



Presence



Emerge



Aspire



Graspable Stair

## 6 SELECT YOUR GATE KIT

- 36" & 42" heights, width no wider than 48".
- Purchase rail section and top rail separately - cannot be used with cable rail.
- Gate Kit includes 2 uprights, Barrette Outdoor Living hardware (2 hinges, 1 latch) and cross braces.



## 7 SELECT YOUR LED ACCESSORIES

Choose from a variety of LED lighting options with easy plug and play installation including under-rail lighting, dome & side lights, all available in Transform's 4 color choices.



# SKU LIST

1a TRANSFORM – STRUCTURAL POSTS		
DESCRIPTION	FLUSH MOUNT	FASCIA MOUNT
Structural Post for 36" Railing Height	73019022	73019023
Structural Post for 42" Railing Height	73019024	73019025
5" x 5" Post Inserts*	73019139	

1b TRANSFORM – POST SLEEVES				
DESCRIPTION	SATIN WHITE	CARAMEL	WHEAT	IRONSTONE
5" x 5" x 39" Post Sleeve – Boxed	73014245	73019143	73019142	73019141
5" x 5" x 54" Post Sleeve – Boxed	73014244	73014637	73019079	73014638
5" x 5" x 120" Post Sleeve – Boxed	73014246	N/A	N/A	N/A

\*Post sleeves come with two 5" x 5" post inserts; more can be purchased for use when sleeving 4" x 4" wooden posts with the 120" post sleeve cut to size.

2 TRANSFORM – POST CAPS & TRIM RINGS				
DESCRIPTION	SATIN WHITE	CARAMEL	WHEAT	IRONSTONE
5" x 5" Pinnacle Post Cap	73019127	73019130	73019129	73019128
5" x 5" Pinnacle LED Post Cap (0.80W)	73019361	73019364	73019363	73019362
5" x 5" Zenith Post Cap	73004495	73004492	73004494	73004493
5" x 5" Zenith LED Post Cap (0.80W)	73019365	73019368	73019367	73019366
5" x 5" Trim Ring	73019038	73014643	73019040	73019039

3a TRANSFORM – RAIL KITS (TOP RAIL SOLD SEPARATELY)	
DESCRIPTION	SATIN WHITE
6' x 36" Level Rail Kit with Square Balusters	73019032
8' x 36" Level Rail Kit with Square Balusters	73019033
6' x 42" Level Rail Kit with Square Balusters	73019035
8' x 42" Level Rail Kit with Square Balusters	73019036
6' x 36" Stair Rail Kit with Square Balusters	73019034
6' x 42" Stair Rail Kit with Square Balusters	73019037

INCLUDED IN RAIL KITS	6' LEVEL	8' LEVEL	6' STAIR
1" Beveled Balusters (Includes baluster plugs)	15	20	15
Top Beam	1	1	1
Bottom Beam	1	1	1
Bottom Rail	1	1	1
Brackets	4	4	4
Support Foot	1	2	1
Installation Instructions & Hardware Pack	1	1	1



### 3b TRANSFORM – BEAM KITS (FOR LEVEL OR STAIR)

DESCRIPTION	SATIN WHITE	CAMEL	WHEAT	IRONSTONE
6' Beam Kit for Square or Round Balusters	<b>73019061</b>	<b>73019063</b>	<b>73019065</b>	<b>73019067</b>
8' Beam Kit for Square or Round Balusters	<b>73019062</b>	<b>73019064</b>	<b>73019066</b>	<b>73019068</b>
6' Beam Kit for Cable Rail	<b>73019347</b>	<b>73019353</b>	<b>73019349</b>	<b>73019351</b>
8' Beam Kit for Cable Rail	<b>73019348</b>	<b>73019354</b>	<b>73019350</b>	<b>73019352</b>

Beam kits for cable rail include mid baluster support which is required for installation.

Cable rail must be installed using a 4" x 4" wooden post to support the cable tension. Bottom rail included in beam kits but optional for cable installation.

INCLUDED IN BEAM KITS	6' KIT	8' KIT
Top Beam	1	1
Bottom Beam	1	1
Bottom Rail	1	1
Brackets	4	4
Mid Baluster Support (In cable rail kits only)	1	2
Support Foot	1	2
Installation Instructions & Hardware Pack	1	1
REQUIRED BEAM KITS USING BALUSTERS	6' KIT	8' KIT
Square or Round Balusters (Sold separately)	15	20

### 4 TRANSFORM – 1 1/8" SQUARE BALUSTERS

DESCRIPTION	SATIN WHITE	CAMEL	WHEAT	IRONSTONE
36" Square Baluster – Level – 10 Pack	<b>73019045</b>	<b>73019049</b>	<b>73019053</b>	<b>73019057</b>
42" Square Baluster – Level – 10 Pack	<b>73019046</b>	<b>N/A</b>	<b>N/A</b>	<b>N/A</b>
36" Square Baluster – Stair – 10 Pack	<b>73019047</b>	<b>73019051</b>	<b>73019055</b>	<b>73019059</b>
42" Square Baluster – Stair – 10 Pack	<b>73019048</b>	<b>N/A</b>	<b>N/A</b>	<b>N/A</b>

Stair balusters are cut at an angle of 32°.

### 4 TRANSFORM – 3/4" ROUND ALUMINUM BALUSTERS & ACCESSORIES

DESCRIPTION	BLACK
36" Round Aluminum Baluster – 10 Pack	<b>73019041</b>
42" Round Aluminum Baluster – 10 Pack	<b>73019042</b>
Aluminum Baluster Shoes – Level – (Box of 20 for 10 balusters)	<b>73019043</b>
Aluminum Baluster Shoes – Stair – (Box of 20 for 10 balusters)	<b>73019044</b>

Aluminum Baluster Shoes for stair installation are designed to work from 32°-38°.

# SKU LIST

## 4 TRANSFORM – CABLE RAIL INFILL & ACCESSORIES

DESCRIPTION	LEVEL	STAIR
Cable Fitting for 36" Finished Height Installation – Box of 20 (10 sets of fittings)	<b>73019357</b>	<b>73019358</b>
Cable Fitting for 42" Finished Height Installation – Box of 24 (12 sets of fittings)	<b>73019359</b>	<b>73019399</b>
Cable Wire – 100' Length Spool	<b>73019360</b>	
Cable Wire – 500' Length Spool	<b>73019381</b>	
Cable Release Key	<b>73025484</b>	
E-Z Clean Cable Cleaner + Protectant	<b>73040274</b>	

*Cable Rail must be installed using a 4" x 4" wooden post to support the cable tension. Bottom rail included in beam kits but optional for cable installation.*

## 5 TRANSFORM – TOP RAILS

DESCRIPTION	SATIN WHITE	CARAMEL	WHEAT	IRONSTONE
6' Transform Top Rail – Aspire	<b>73019069</b>	<b>73019075</b>	<b>73019071</b>	<b>73019073</b>
8' Transform Top Rail – Aspire	<b>73019070</b>	<b>73019076</b>	<b>73019072</b>	<b>73019074</b>
6' Transform Top Rail – Emerge	<b>73019080</b>	<b>73019086</b>	<b>73019082</b>	<b>73019084</b>
8' Transform Top Rail – Emerge	<b>73019081</b>	<b>73019087</b>	<b>73019083</b>	<b>73019085</b>
6' Transform Top Rail – Presence	<b>73019088</b>	<b>73019094</b>	<b>73019090</b>	<b>73019092</b>
8' Transform Top Rail – Presence	<b>73019089</b>	<b>73019095</b>	<b>73019091</b>	<b>73019093</b>
6' Transform Graspable Top Rail – For Stairs	<b>73019009</b>	<b>73019012</b>	<b>73019010</b>	<b>73019011</b>

*For 45 degree angle railing, the Emerge top rail can be cut at 45 degrees and installed. However, if using the Presence or Aspire top rail, the two adjacent rail sections must be cut at 22.5 degrees and installed on posts mounted at 22.5 degrees. Please contact our customer service department for more information.*

## 6 TRANSFORM – GATE KITS

DESCRIPTION	SATIN WHITE
36" Gate Kit	<b>73019237</b>
42" Gate Kit	<b>73019241</b>

*Gate kits include 2 uprights, 2 white cross braces, black Barrette hardware (2 hinges, 1 latch). Rail section and top rail sold separately. Gates cannot exceed 48" in opening width.*

## 7 TRANSFORM – LIGHTING ACCESSORIES

DESCRIPTION	SATIN WHITE	CARAMEL	WHEAT	IRONSTONE
5" x 5" Pinnacle LED Post Cap (0.80W)	<b>73019361</b>	<b>73019364</b>	<b>73019363</b>	<b>73019362</b>
5" x 5" Zenith LED Post Cap (0.80W)	<b>73019365</b>	<b>73019368</b>	<b>73019367</b>	<b>73019366</b>
Dome Light (0.80W) – SATIN WHITE	<b>73019407</b>			
Stair/Side Light (0.40W) – SATIN WHITE	<b>73019414</b>			
Flush Deck Light (0.40W)	<b>73019403</b>			
LED Under-Rail Lighting (92" strip – 3W)	<b>73019376</b>			
Bluetooth Transformer for LED Lighting	<b>73041277</b>			
Electrical Wire for LED Lighting – 2'	<b>73032449</b>			
Electrical Wire for LED Lighting – 5'	<b>73019375</b>			
Electrical Wire for LED Lighting – 7'	<b>73019373</b>			
Electrical Wire for LED Lighting – 9'	<b>73019374</b>			
2-Way Splitter	<b>73019370</b>			
5-Way Splitter	<b>73019371</b>			

*Transformer is 50W and can be used with lighted post caps or under-rail lighting. Includes photocell, built-in dimmer, timer, remote, and is Bluetooth capable. Download the "SmartPower50" app from the App Store or Google Play to control your lighting via your smartphone.*

## 8 TRANSFORM – EXTRA ACCESSORIES

DESCRIPTION	
Transform Brackets – Set of 4	<b>73019126</b>
Transform Baluster Plugs for 1 1/8" Square Balusters – Bag of 20	<b>73019232</b>
96" Aspire/Presence Top Rail IBC Stiffener – Box of 4*	<b>73019002</b>
96" Emerge Top Rail IBC Stiffener – Box of 4*	<b>73019003</b>
72" Transform Top Rail Adapter for mix'n'match with RDI MetalWorks® Excalibur® (2 + hardware)	<b>73019235</b>
96" Transform Top Rail Adapter for mix'n'match with RDI MetalWorks® Excalibur® (2 + hardware)	<b>73019236</b>

*\* For commercial railing heights of 42" with lengths over 91", the IBC stiffener is required for code compliancy.*

# HIDEAWAY™ PRIVACY RAILING

**HIDEAWAY PRIVACY RAILING** provides a contemporary and modern look to your deck or patio while offering you the option of privacy in your outdoor space. Powder-coated aluminum framing provides strength for your installation while a selection of vinyl infill boards lock securely together with our patented ClickConnect™ technology. Designed to meet IBC and IRC, HideAway allows you to create privacy that is safe, secure, and code compliant for decks of any height.





## FEATURES & BENEFITS

- Strong and secure with ClickConnect™ technology to lock boards in place
- Versatile posts offer corner, mid, and end applications in varying heights
- Infill options in a variety of colors
- Exceptional strength with powder-coated AAMA certified aluminum



Matte Black



White

*Colors shown are for HideAway posts and rails. Colors reproduced in print may vary from actual colors. Please see your dealer for physical color samples.*



# HOW TO ORDER

1

## SELECT YOUR RAIL KIT OPTIONS

HideAway™ Privacy Railing kits are available in full privacy or half privacy giving you the flexibility to design the perfect solution for your desired level of privacy. Kits come in Matte Black or White aluminum.



Full Privacy Panel



Half Privacy Panel

Full Privacy Rail Kits include top and bottom rails, and mid rail. Half privacy kits include top and bottom rail

2

## CHOOSE YOUR POSTS

HideAway Privacy Railing offers posts in end, mid, and corner configurations in both Matte Black and White aluminum. A post is needed at each end of your HideAway rail panels. End posts can also be used to transition from privacy to our vinyl or aluminum railing. 42" posts can be used for half privacy sections 36" or 42", and 72" posts are used for full privacy sections.



2" x 4" End Post



2" x 4" Mid Post



3.3" x 3.3" Corner Post

Posts come with pre-mounted base plates, 2-piece trim rings, infill board adapters, post hardware covers, channel cover, and flat caps.

3

### CHOOSE YOUR BOARDS

Select your infill boards (pack of 6) in 5 different colors to complete your privacy solution! Infill boards lock securely together with our ClickConnect™ technology and fit snugly into the infill adapter channels in posts. Boards measure 66" long to create a 6' wide privacy panel from one end of the post to the other, with 64" of board visible inside of post to inside of post. Boards can be cut to create shorter spans of privacy rail.



Colors reproduced in print may vary from actual colors. Please see your dealer for physical color samples.

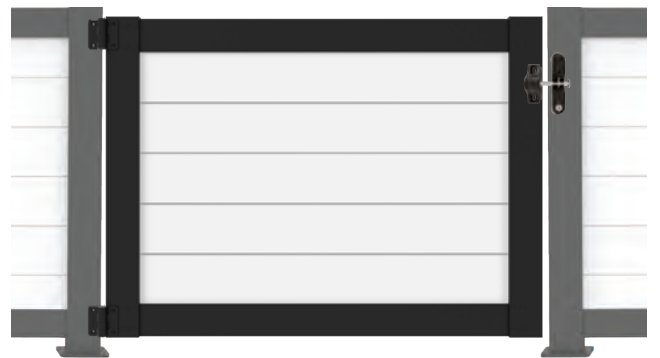
4

### COMPLETE YOUR INSTALL WITH A GATE KIT

Gate kits are available in 36", 42", and 72" heights, with widths up to 48". Gate kits include uprights, infill board adapters, top and bottom rails, and gate hinges; latch sold separately. Purchase your infill boards separately. Cut top and bottom rails and infill boards to desired width for your gate.



Full Privacy Gate (72")



Half Privacy Gate (36" or 42")

# SKU LIST

## 1 HIDEAWAY PRIVACY RAILING – RAIL KITS

DESCRIPTION	WHITE	MATTE BLACK
6' Full Privacy Rail Kit (Includes top rail, bottom rail, and mid rail)	<b>73042844</b>	<b>73042828</b>
6' Half Privacy Rail Kit (Includes top rail and bottom rail)	<b>73042845</b>	<b>73042827</b>

*Infill boards sold separately. Full privacy panel requires 11 infill boards, half privacy requires 5 for 36" finished height or 6 for 42" finished height. An installed section using 2 end posts measures a finished width of 6'. If advanced wind load (check local codes) requirements are necessary, then full privacy railing (6' tall) must have post spacing every 3'.*

## 2 HIDEAWAY PRIVACY RAILING – POSTS

DESCRIPTION	WHITE	MATTE BLACK
2" x 4" x 42" End Post – Surface Mount	<b>73042839</b>	<b>73042834</b>
2" x 4" x 42" Mid Post – Surface Mount	<b>73042840</b>	<b>73042832</b>
3.3" x 3.3" x 42" Corner Post – Surface Mount	<b>73042838</b>	<b>73042833</b>
2" x 4" x 72" End Post – Surface Mount	<b>73042842</b>	<b>73042837</b>
2" x 4" x 72" Mid Post – Surface Mount	<b>73042843</b>	<b>73042835</b>
3.3" x 3.3" 72" Corner Post – Surface Mount	<b>73042841</b>	<b>73042836</b>

*42" posts are used for half privacy panels for 42" height railing, or for a finished railing height of 36" (42" post can be cut down to for 36" rail height). 72" posts are used for full privacy sections.*

INCLUDED WITH POSTS	END POST	MID POST	CORNER POST
Post with pre-mounted base plate	1	1	1
Flat post cap	1	1	1
2-piece trim ring	1	1	1
Infill adapter channels – 27"	1	2	2
Infill adapter channels – 31 5/16"	1	2	2
Post hardware cover	1	1	2
36" channel cover**	N/A	1	1
Hardware pack (Includes 2 vinyl shims)	1	1	1

*\*42" posts do not include 27" infill adapter channels.*

*\*\* 36" channel cover included in 72" posts only for a finished look transitioning from full to half privacy.*



### 3 HIDEAWAY PRIVACY RAILING – INFILL BOARDS

DESCRIPTION	
6" x 66" Vinyl Interlocking Boards for 6' Width – Pack of 6 – WHITE	<b>73042846</b>
6" x 66" Vinyl Interlocking Boards for 6' Width – Pack of 6 – KHAKI	<b>73043492</b>
6" x 66" Vinyl Interlocking Boards for 6' Width – Pack of 6 – SAND	<b>73043491</b>
6" x 66" Vinyl Interlocking Boards for 6' Width – Pack of 6 – GRAY	<b>73044977</b>
6" x 66" Vinyl Interlocking Boards for 6' Width – Pack of 6 – DRIFTWOOD	<b>73044978</b>

### 4 HIDEAWAY PRIVACY RAILING – GATE KITS

DESCRIPTION	WHITE	MATTE BLACK
36" Height Gate Kit for Widths 36" – 48"	<b>73044982</b>	<b>73044979</b>
42" Height Gate Kit for Widths 36" – 48"	<b>73045453</b>	<b>73044980</b>
72" Height Gate Kit for Widths 36" – 48"	<b>73045454</b>	<b>73044981</b>
Gravity Latch	<b>73025491</b>	<b>73028060</b>
Two Sided Locking Latch	<b>73025501</b>	<b>73024418</b>

Gate kits include uprights, top and bottom rails, and gate hinges. 36" and 42" gate kits include compact butterfly hinges and 72" gate kit includes heavy duty hinges, color matched to gate. Purchase your gate latch separately. Infill boards sold separately; 5 boards needed for 36" high gate kits, 6 boards needed for 42" high gate kits, and 11 boards needed for 72" high gate kits. Boards and rails must be cut to desired width for finished gate width (36" – 48").

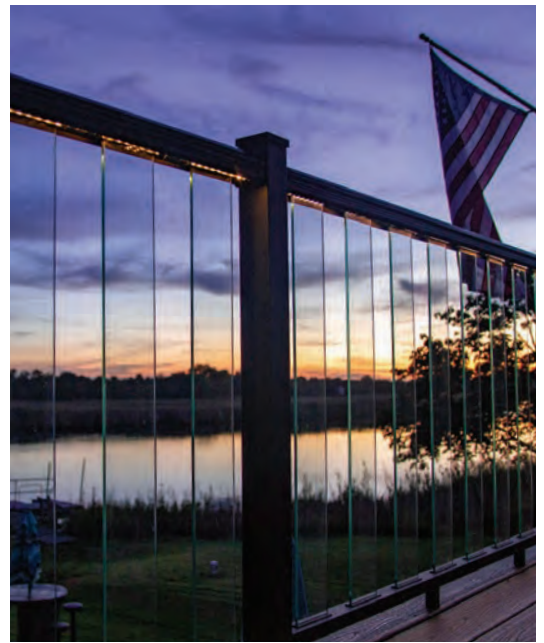
### 5 TOUCH-UP PAINT

DESCRIPTION	WHITE	MATTE BLACK
Touch-Up Paint Aerosol (12 oz)	<b>73022328</b>	<b>73044481</b>
Touch-Up Paint Pen (1/3 fl oz)	<b>73022351</b>	<b>N/A</b>
Touch-Up Paint Bottle & Brush (1/2 fl oz)	<b>N/A</b>	<b>73044483</b>

# AVALON ALUMINUM RAILING®

**AVALON ALUMINUM RAILING** comes in rust resistant, sleek aluminum construction. Unique style options combine form, function, and versatility to add a rich, stylish look to your home while adding safety and security at the same time. Choose traditional square baluster rail panels, or for a truly high end look, try glass slats or modern cable for your infill.





## FEATURES & BENEFITS

- Multiple top rails for a variety of design aesthetics
- Infill options from traditional square balusters to sleek cable
- Pre-assembled panels with innovative Snap&Stay<sup>®</sup> locking strip
- Exceptional strength with powder-coated AAMA certified aluminum

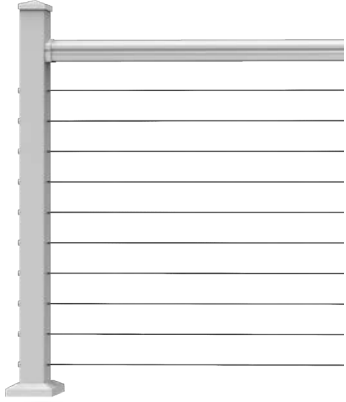


Colors reproduced in print may vary from actual colors. Please see your dealer for physical color samples.



# HOW TO ORDER

## 1 CHOOSE YOUR LEVEL OR STAIR SECTION WITH YOUR INFILL DESIGN



Cable Rail

Beam kit for level or stair cable rail; includes 4 brackets. Cable fittings with cable sold separately. Top rail sold separately.

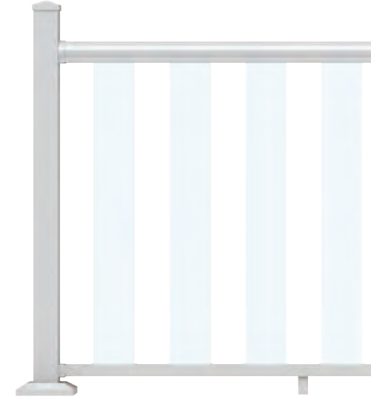
**NOTE:** To be used with aluminum pre-routed cable post system (1a).



3/4" Square Balusters

Pre-assembled level and stair panels. Level panels include 4 brackets and a support foot. Stair panels include 4 brackets. Top rail sold separately.

**NOTE:** Can be used with any Avalon post system, structural post, or wooden post with post sleeve (1b, 1c, 1d, 1e).



Glass Slats

Beam kit for glass slats; includes 4 brackets and a support foot. Glass slats sold separately. Available for level installation only. Top rail sold separately.

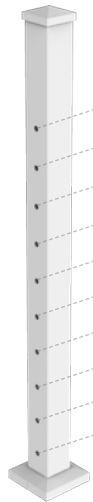
**NOTE:** Can be used with any Avalon post system, structural post, or wooden post with post sleeve (1b, 1c, 1d, 1e).

For 42" commercial height, over-the-top spans cannot exceed 5' in length between posts.

## 1a ALUMINUM CABLE RAIL POSTS



Routed End Post



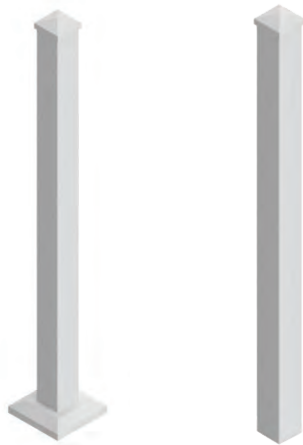
Routed Mid Post



Routed Corner Post

End, Mid, and Corner posts for level applications. End posts have routed holes through post to anchor fitting at an end run of cable. Stair and fascia posts also available. 42" stair posts designed to work with 39" top stair posts. 48" stair posts designed to work with 45" top stair and level posts. 52" and 55" posts for fascia applications only.

## 1b STANDARD ALUMINUM POSTS



2½" x 2½" Flush Mount Post

2½" x 2½" Fascia Mount Post

Flush mount posts include connected base plate, sandwich plate, trim ring, post cap, and two vinyl shims. Also available in a heavy duty option for 45" and 60".

Standard posts (flush mount and fascia) can be used with traditional ¾" square baluster panels or with glass slat beam kits.

## 1c OVER-THE-TOP POST OPTIONS

**AVALON PANELS MUST BE CUT UP TO 4" SHORTER THAN TOP RAILS PENDING INSTALL APPLICATION**



End Post Configuration

Mid Post Configuration

Corner Post Configuration

2" x 2" Aluminum Over-the-Top Post

Posts include connected base plate, sandwich plate, trim ring and two vinyl shims. Brackets to match top rail style sold separately (step 5). For 42" commercial height, over-the-top spans cannot exceed 5' in length between posts.

Over-the-top posts can be used with traditional ¾" square baluster panels or with glass slat beam kits.

## 1d 4¼" X 4¼" ALUMINUM POST OR SLEEVE OPTIONS

### a CHOOSE YOUR POST SLEEVE



4¼" x 4¼" x 108" post sleeves can be used as porch columns (5,000 lb load capacity); two mounting kits will be needed in this application.

### b SELECT YOUR MOUNTING KIT OR TRIM



Mounting kit includes 2-piece trim, mounting plate, and hardware. Trim ring also sold separately if using post as sleeve.

### c SELECT YOUR POST CAP



Flat Post Cap; not needed if running deck board over the top of your posts.

**1e** If you're installing Avalon using existing 4" x 4" or 6" x 6" wood posts, 1d offers the ability to sleeve a wooden 4" x 4" post with our aluminum post sleeve, or purchase a vinyl post sleeve/wrap for larger posts.

For a custom mix'n'match look, Transform posts sleeves can be used over structural or wooden 4" x 4" posts. See page 8 for Transform post sleeves.

# HOW TO ORDER

## SELECT YOUR INFILL

Cable fittings are purchased based on the number of cable runs needed (10 for 36" finished heights, 12 for 42" finished heights) and come in lengths of 10', 20', 30', or 50'.

Glass slats are sold separately in boxes of 9 (for 6' lengths) and 12 (for 10' lengths).

2a



Beam Kit



Cable + Fitting

2b

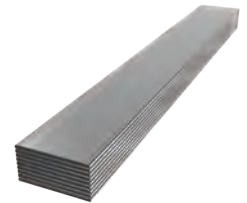


3/4" Square Baluster  
Pre-assembled Panel

2c



Beam Kit

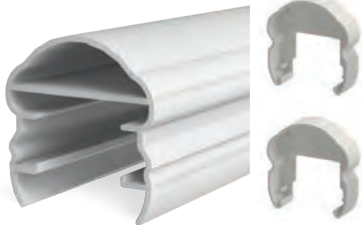


Glass Slats

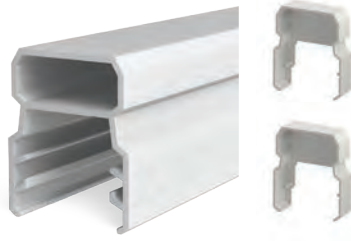
3

## CHOOSE YOUR TOP RAIL

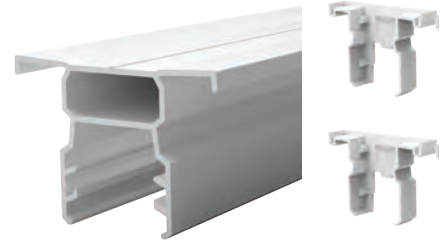
Top rails are sold separately and include end covers. Top rails must be purchased to complete the installation.



Pellinore™



Tristan™



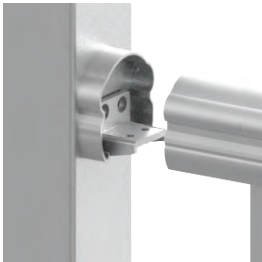
Oberon™\*

\*Oberon top rail can only be installed as a level application (no angles or stairs). Deck board required to install on top of Oberon.

4

## ACCESSORY BRACKETS

If needed, purchase separate brackets for additional installation applications – each bracket kit comes with a pair of top and bottom brackets and a pair of top rail end covers specific for the top rail profile you've selected.



Level Brackets



Level Angle Brackets



Stair Brackets (0-38°)



Fixed Angle Stair Brackets (29-35°)

Brackets shown with Pellinore top rail and top rail end cover. Fixed angle stair brackets not available for Oberon.

Note: Typical new stair construction utilizes a 7" rise and an 11" run which results in a 32° stair angle.

5

### OVER-THE-TOP BRACKETS

Once you've selected your top rail style, select the matching over-the-top post brackets that match your installation plan and posts from step 1b.



Mid Bracket



Corner Bracket



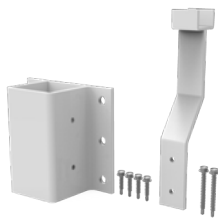
End Bracket

Shown for the Pellinore Top Rail. When using Oberon Top Rail, end bracket covers will be needed for over-the-top end use only; no covers needed for corner or mid over-the-top installations as deck board will run over the top of top rails.

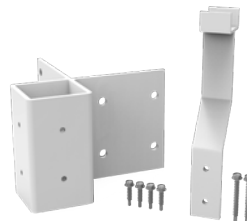
6

### FASCIA BRACKETS

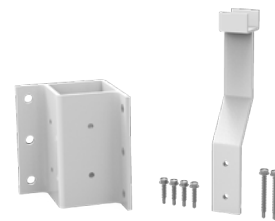
If using a fascia post (cable fascia posts, 1a, or standard fascia posts, 1b), purchase your fascia mount bracket kits for each post application.



Mid Bracket Kit



Outside Corner Bracket Kit



Inside Corner Bracket Kit

7

### GATE KITS

Gate kits are available in 2 heights to work with 36" and 42" railing. Gate kits include 2 uprights, 2 cross braces, and Barrette Outdoor Living gate hardware (2 hinges, 1 latch). Simply purchase your rail section and top rail to complete your gate kit installation. Gates cannot exceed 48" in width and cannot be used with cable infill, glass infill, or Oberon Top Rail.

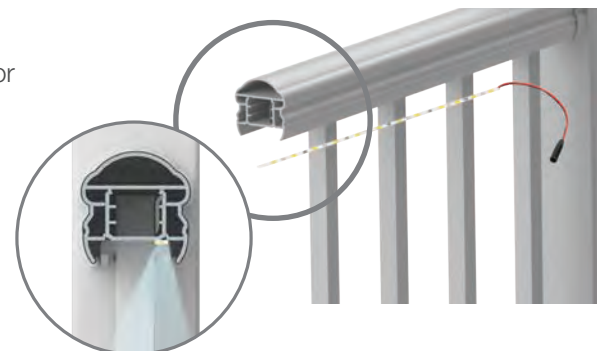


8

### CHOOSE YOUR LIGHTING OPTIONS

Avalon LED and solar 2 1/2" post lights are powder-coated and color matched for all 3 Avalon colors.

In addition to lighted post caps, our under-rail lighting gives a unique look and creates ambiance for your deck. Installs quickly and easily with our plug-and-play wiring system, and attaches securely with its strong adhesive backing. Simply install the light strip into the light channel and use the supplied adhesive to adhere to your top rail. See LED Lighting on page 72.



# SKU LIST

## 1a ALUMINUM 2½" X 2½" ROUTED CABLE POSTS

DESCRIPTION	WHITE	MATTE BLACK	MATTE BRONZE
2½" x 2½" x 39" End Post	73042977	73042976	73042978
2½" x 2½" x 39" Mid Post	73042983	73042982	73042984
2½" x 2½" x 39" Corner Post	73042995	73042994	73042996
2½" x 2½" x 39" Top Stair Post	73050039	73050038	73050040
2½" x 2½" x 42" Bottom Stair Post	73045616	73045615	73045617
2½" x 2½" x 42" Mid Stair Post	73050045	73050044	73050046
2½" x 2½" x 45" End Post	73042980	73042979	73042981
2½" x 2½" x 45" Mid Post	73042986	73042985	73042987
2½" x 2½" x 45" Corner Post	73042998	73042997	73042999
2½" x 2½" x 45" Top Stair Post	73050042	73050041	73050043
2½" x 2½" x 48" Bottom Stair Post	73045619	73045618	73045620
2½" x 2½" x 48" Mid Stair Post	73050048	73050047	73050049
2½" x 2½" x 52" Fascia End Post	73045622	73045621	73045623
2½" x 2½" x 52" Fascia Mid Post	73045628	73045627	73045629
2½" x 2½" x 52" Fascia Corner Post	73045625	73045624	73045626
2½" x 2½" x 52" Fascia Top Stair Post	73050051	73050050	73050052
2½" x 2½" x 55" Fascia Bottom Stair Post	73050079	73050077	73050080
2½" x 2½" x 55" Fascia Mid Stair Post	73050054	73050053	73050055

42" stair posts designed to work with 39" top stair posts. 48" stair posts designed to work with 45" top stair and level posts. 52" and 55" posts for fascia applications only.

## 1b ALUMINUM 2½" X 2½" STANDARD POSTS

DESCRIPTION	WHITE	MATTE BLACK	MATTE BRONZE
2½" x 2½" x 39" Post	73043054	73043046	73043050
2½" x 2½" x 45" Post	73043055	73043047	73043051
2½" x 2½" x 45" Heavy Duty Post	73043056	73043048	73043052
2½" x 2½" x 60" Heavy Duty Post	73043057	73043049	73043053
2½" x 2½" x 45" Fascia Mount Post*	73045504	73045503	73045505
2½" x 2½" x 52" Fascia Mount Post*	73045501	73045500	73045502

Brackets to install fascia mount posts for end, mid, or corner applications sold separately. See table 6 for fascia brackets.

## 1c AVALON – 2" X 2" OVER-THE-TOP POSTS

DESCRIPTION	WHITE	MATTE BLACK	MATTE BRONZE
2" x 2" x 33" Over-the-Top Post (For 36" finished height)	73020642	73020646	73019470
2" x 2" x 39" Over-the-Top Post (For 42" finished height)	73020643	73020647	73019471

NOTE: Avalon panels must be cut up to 4" shorter than top rails pending install application. For 42" commercial height, over-the-top spans cannot exceed 6' in length between posts



## 1d ALUMINUM 4¼" X 4¼" POSTS/SLEEVES

DESCRIPTION	WHITE	MATTE BLACK	MATTE BRONZE
4¼" x 4¼" x 39" Post	73041379	73041378	73041376
4¼" x 4¼" x 45" Post	73041383	73041382	73041380
4¼" x 4¼" x 108" Porch Post – 5,000 lb capacity	73041375	73041374	73041372
Flat Post Cap for 4¼" x 4¼" Posts	73041367	73041366	73041364
Trim Ring for 4¼" x 4¼" Posts	73041371	73041370	73041368
Mounting Kit for 4¼" x 4¼" Posts (Includes trim ring)	73041363	73041362	73041360

## 2a AVALON – CABLE RAIL BEAM KITS - CABLE FITTINGS SOLD SEPARATELY

DESCRIPTION	WHITE	MATTE BLACK	MATTE BRONZE
6' x 36" Level Rail Beam Kit for Cable Rail	73042965	73042964	73042966
8' x 36" Level Rail Beam Kit for Cable Rail	73042968	73042967	73042969
6' x 42" Level Rail Beam Kit for Cable Rail	73050027	73050026	73050028
8' x 42" Level Rail Beam Kit for Cable Rail	73050030	73050029	73050031
6' Stair Rail Beam Kit for Cable Rail	73050033	73050032	73050034
8' Stair Rail Beam Kit for Cable Rail	73050036	73050035	73050037

Stair beam kits can accommodate both 36" and 42" finished heights. See product instructions for details.

INCLUDED WITH CABLE RAIL BEAM KITS	6' KIT	8' KIT
Top Beam	1	1
Bracket Kit (2 top rail brackets, mounting hardware)	1	1
Mid Support + Mid Support Foot (level kits only)	1	2

## 2a CABLE COMPONENTS

DESCRIPTION	
10' Cable with Fitting – Package of 1	73042960
20' Cable with Fitting – Package of 1	73042961
30' Cable with Fitting – Package of 1	73042962
50' Cable with Fitting – Package of 1	73042963
Level Cable Lacing Needle	73050056
Corner Cable Lacing Needle	73050057
Cable Release Key	73025484
E-Z Clean Cable Cleaner + Protectant	73040274

For a finished rail height of 36", 10 packages of cable with fitting will be needed. For a finished rail height of 42", 12 packages of cable with fitting will be needed. .

## 2b AVALON – LEVEL RAIL PANELS

DESCRIPTION	WHITE	MATTE BLACK	MATTE BRONZE
6' x 36" Level Rail Panel with Square Balusters	73019269	73019285	73019458
8' x 36" Level Rail Panel with Square Balusters	73019270	73019286	73019464
6' x 42" Level Rail Panel with Square Balusters	73019273	73019289	73019459
8' x 42" Level Rail Panel with Square Balusters	73019274	73019290	73019465

# SKU LIST

## 2b AVALON – STAIR RAIL PANELS

DESCRIPTION	WHITE	MATTE BLACK	MATTE BRONZE	
6' x 36" Stair Rail Panel with Square Balusters	73019271	73019287	73019466	
8' x 36" Stair Rail Panel with Square Balusters	73019272	73019288	73019468	
6' x 42" Stair Rail Panel with Square Balusters	73019275	73019291	73019467	
8' x 42" Stair Rail Panel with Square Balusters	73019276	73019292	73019469	
INCLUDED WITH PANELS	6' LEVEL	8' LEVEL	6' STAIR	8' STAIR
Fully Assembled Panel	1	1	1	1
Bracket Set (2 top, 2 bottom, mounting screws)	1	1	1	1

## 2c AVALON – GLASS LEVEL RAIL KITS - GLASS SLATS SOLD SEPARATELY

DESCRIPTION	WHITE	MATTE BLACK	MATTE BRONZE
6' Beam Kit for Glass Slats (level only)	73020648	73020652	73019454
8' Beam Kit for Glass Slats (level only)	73020649	73020653	73019460

6' kits require 9 glass slats and 8' kits require 12 glass slats (sold separately). Top and bottom gaskets for glass slats included with rail kits.

INCLUDED WITH GLASS RAIL KITS	6' KIT	8' KIT
Top Beam	1	1
Bottom Rail	1	1
Glass Slat Gaskets (top and bottom)	18	24
Bracket Kit (4 level brackets, mounting hardware)	1	1
Support Foot	1	1

## 2c GLASS SLATS

DESCRIPTION	For 36" Rail Height	For 42" Rail Height
Glass Slats for Level Kits – Box of 9 – For Use with 6' Kits	73041331	73041332*
Glass Slats for Level Kits – Box of 12 – For Use with 8' Kits	73041333	73041334*

\*42" glass slats for residential use only.

## 3 AVALON – TOP RAILS – INCLUDES MATCHING END COVERS (2 EACH)

DESCRIPTION	WHITE	MATTE BLACK	MATTE BRONZE
6' Top Rail – Pellinore	73020442	73020448	73019456
8' Top Rail – Pellinore	73020443	73020449	73019462
6' Top Rail – Tristan	73020446	73020452	73019457
8' Top Rail – Tristan	73020447	73020453	73019463
6' Top Rail – Oberon*	73032049	73032042	73032048
8' Top Rail – Oberon*	73032052	73032050	73032051

\*Oberon top rail is intended for level applications only. Deck board must be installed on top of Oberon profile.

## 4 AVALON – BRACKETS

DESCRIPTION	WHITE	MATTE BLACK	MATTE BRONZE
Pellinore Level Bracket Kit (Set of 4 – 2 top, 2 bottom)	73019301	73019298	73019490
Pellinore Stair Bracket Kit (Set of 4 – 2 top, 2 bottom)	73019310	73019307	73019491
Pellinore Fixed Angle Stair Bracket (Set of 4 - 2 top, 2 bottom)	73045480	73045479	73045481
Pellinore Angle Bracket Kit (Set of 4 – 2 top, 2 bottom)	73019318	73019319	73019489

#### 4 AVALON – BRACKETS

DESCRIPTION	WHITE	MATTE BLACK	MATTE BRONZE
Tristan Level Bracket Kit (Set of 4 – 2 top, 2 bottom)	73019300	73019297	73019496
Tristan Stair Bracket Kit (Set of 4 – 2 top, 2 bottom)	73019309	73019306	73019497
Tristan Fixed Angle Stair Bracket (Set of 4 - 2 top, 2 bottom)	73045483	73045482	73045484
Tristan Angle Bracket Kit (Set of 4 – 2 top, 2 bottom)	73019315	73019316	73019495
Oberon Level Bracket Kit (Set of 4 – 2 top, 2 bottom)	73040784	73040785	73040786

#### 5 AVALON – OVER-THE-TOP BRACKETS

DESCRIPTION	WHITE	MATTE BLACK	MATTE BRONZE
Pellinore 2" Over-the-Top Post Bracket – Mid Post	73020663	73020681	73019487
Pellinore 2" Over-the-Top Post Bracket – Corner Post	73020664	73020682	73019486
Pellinore 2" Over-the-Top Post Bracket – End Post	73020665	73020683	73019488
Tristan 2" Over-the-Top Post Bracket – Mid Post	73020666	73020684	73019494
Tristan 2" Over-the-Top Post Bracket – Corner Post	73020667	73020685	73019492
Tristan 2" Over-the-Top Post Bracket – End Post	73020668	73020686	73019493
Oberon 2" Over-the-Top Post Bracket – Mid Post*	73040798	73040797	73040799
Oberon 2" Over-the-Top Post Bracket – Corner Post*	73040801	73040800	73040802
Oberon 2" Over-the-Top Post Bracket – End Post	73040788	73040787	73040796

\*Does not include bracket covers; deck board will install over the top of Oberon top rail.

#### 6 AVALON – FASCIA BRACKETS

DESCRIPTION	WHITE	MATTE BLACK	MATTE BRONZE
Fascia Mount Mid Bracket	73045489	73045488	73045490
Fascia Mount Outside Corner Bracket	73045492	73045491	73045493
Fascia Mount Insider Corner Bracket	73045495	73045494	73045496

#### 7 AVALON – GATE KITS

DESCRIPTION	WHITE	MATTE BLACK	MATTE BRONZE
36" Gate Kit	73020655	73020654	73019478
42" Gate Kit	73020658	73020657	73019479

Gate Kits include uprights, cross braces, and Barrette Outdoor Living gate kit hardware (2 hinges, 1 gravity latch – black only). Complete your gate by purchasing your rail panel and top rail separately. Gate kits cannot be used with Avalon glass or cable rail and cannot exceed widths of 48".

8 To view all the LED lighting options and details, see our LED Lighting on page 72.

#### 9 TOUCH-UP PAINT

DESCRIPTION	WHITE	MATTE BLACK	MATTE BRONZE
Touch-Up Paint Aerosol (12 oz)	73022328	73044481	73044482
Touch-Up Paint Pen (1/3 fl oz)	73022351	N/A	N/A
Touch-Up Paint Bottle & Brush (1/2 fl oz)	N/A	73044483	73044484

# METALWORKS EXCALIBUR®

**METALWORKS EXCALIBUR** brings you strength and security in steel railing. Excalibur features hidden attachments and pre-attached brackets, allowing for ease of installation. And our new **Latitudes™** style provides a sophisticated option with a round, horizontal rod infill. Available in textured Matte Black and Hammered Bronze finishes along with accessories to help you customize your install with a deck board top, Excalibur gives you the strength of steel in a traditional and timeless style.



## NEW LATITUDES HORIZONTAL RAIL



### FEATURES & BENEFITS

- Bracketed posts make level installation simple and provide code compliant bottom spacing
- Unique all-in-one pivoting brackets allow for easy stair or level angle installations
- Triple powder-coated finishes provide maximum durability
- Fully assembled, factory-welded rail panels make installation as easy as measure, cut, install

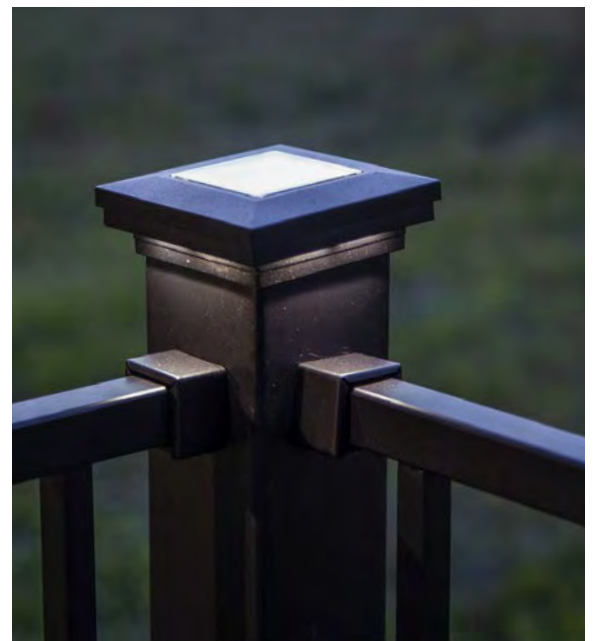


Matte Black



Hammered  
Bronze

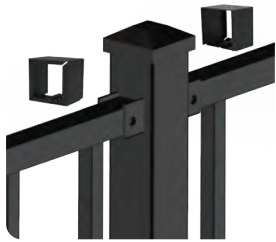
*Colors reproduced in print may vary from actual colors. Please see your dealer for physical color samples.*



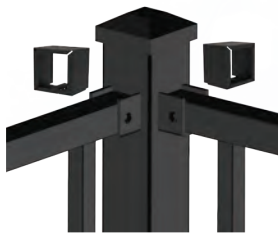
# HOW TO ORDER

## 1a SELECT YOUR POST OPTIONS

Excalibur 2" x 2" and 3" x 3" posts come in three options with pre-mounted brackets and blank posts for more customized installations. Excalibur 2" x 2" fascia posts come as blank posts; purchase your brackets separately.



Mid Post



Corner Post



End Post



Blank Post



Fascia Post



Fascia Post shown with brackets

Excalibur bracketed posts come with welded base plates, pre-attached brackets, pre-mounted post top, bracket covers, two-piece trim ring, and vinyl shims.

Blank posts come with welded base plates, pre-mounted post top, two-piece trim ring, and vinyl shims.

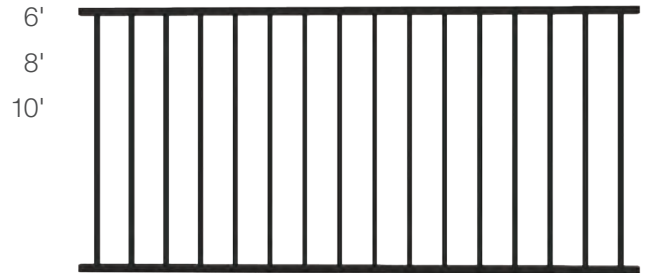
Fascia post comes with pre-mounted post top and vinyl shims. Brackets sold separately.

**1b** For a custom mix'n'match look, Transform posts sleeves can be used over structural or wooden 4" x 4" posts. See page 8 for Transform post sleeves.

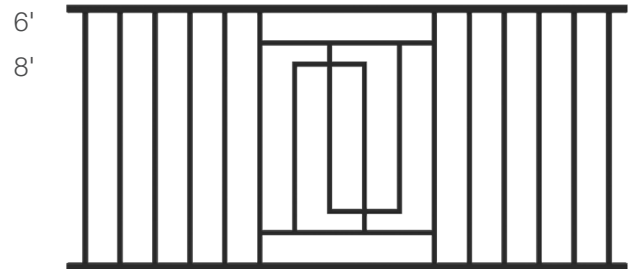
## 2 CHOOSE LEVEL SECTIONS

Factory-welded, pre-assembled level panels make installation simple! Available in 34" and 40" heights for varying finished rail heights depending on bottom space on post.

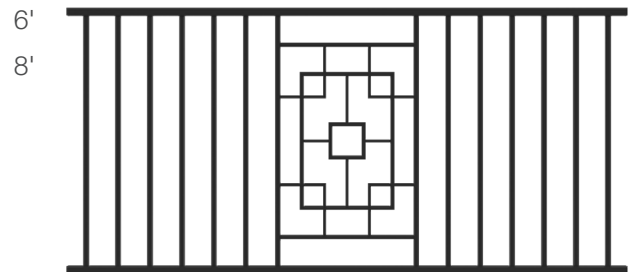
### Traditional Level Panel



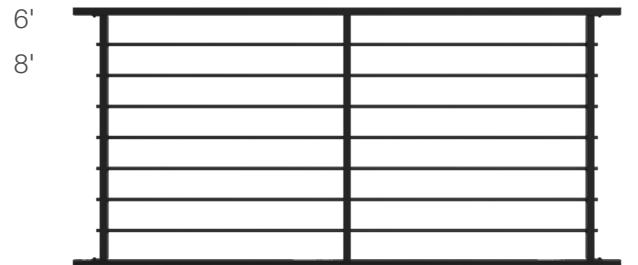
### Serpentine Level Panel



### Mosaic Level Panel



### Latitudes Level Panel

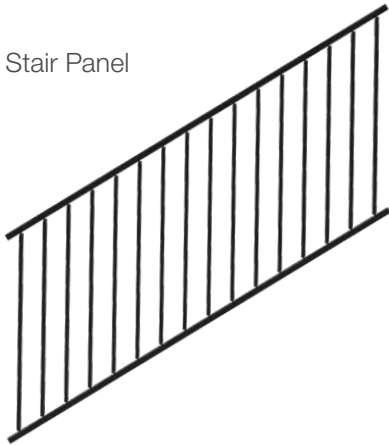


## 2 CHOOSE STAIR SECTIONS

Factory-welded, pre-assembled stair panels make installation simple! Available in 34" and 40" heights for varying finished rail heights depending on bottom space on post. Panels can be racked up to 38°.

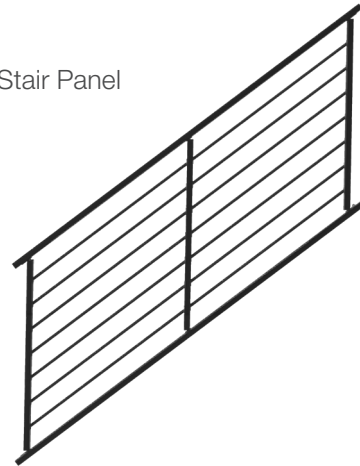
Traditional Stair Panel

6'  
8'



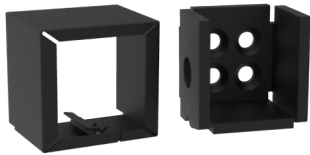
Latitudes Stair Panel

6'  
8'

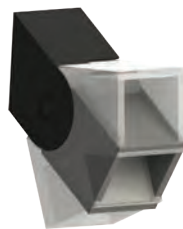


## 3 CHOOSE YOUR BRACKETS

Mid, corner, and end posts all include brackets for level rail installation. Stair brackets must be purchased separately. If installing Excalibur onto existing posts, level brackets may also be purchased separately.



Level Brackets



Stair Bracket (can also be used for level angles 0 - 45°)



Fascia Brackets



Scrollwork Decorative Level Bracket



Imperial Decorative Level Bracket

Steel Post			
Panel Height	Minimum Bottom Space	Maximum Bottom Space	Post Height
36"	2 <sup>5</sup> / <sub>8</sub> "	4"	40"
42"			46"
Wood Post			
Panel Height	Minimum Bottom Space	Maximum Bottom Space	Post Height
36"	2"	4"	38"
42"			44"

Decorative brackets can be used on wood (with or without vinyl or composite sleeves) or steel posts; includes mounting hardware for both vinyl or composite sleeved wood posts and steel posts.

# HOW TO ORDER

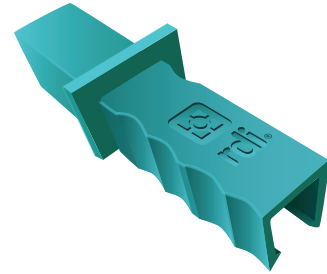
4

## ACCESSORIES

Customize your Excalibur installation by using our flush mount brackets to mount any type of deck board to the top of your railing. The Rail Cutting Jig helps to cut the steel Excalibur panels when using a jigsaw.



Flush Mount Bracket



Rail Cutting Jig

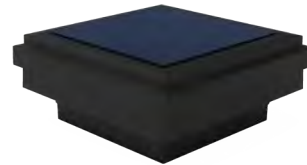
5

## LIGHTING

Excalibur LED and Solar lighted post caps are available to fit both 2" and 3" posts and are offered in Matte Black. See page 72 for all the LED lighting options.



LED Down Light Post Cap (0.80W – 2" or 3")



Solar Down Light Post Cap (2" or 3")

6

## GATES

If needed, purchase your gate – (finished gate opening is 36") or gate kit ends for 36" – 38" or 42" – 44" installed height (use with rail panel – purchase separately). All gate hardware is sold separately.



Pre-Assembled Gate



Gate Ends



## 1a METALWORKS EXCALIBUR – 2" X 2" POSTS

DESCRIPTION	MATTE BLACK	HAMMERED BRONZE
2" x 2" x 38" Mid Post Assembly for 36" Rail Height with 2" Bottom Space	73018345	73018346
2" x 2" x 38" End Post Assembly for 36" Rail Height with 2" Bottom Space	73018336	73018337
2" x 2" x 38" Corner Post Assembly for 36" Rail Height with 2" Bottom Space	73018326	73018327
2" x 2" x 44" Mid Post Assembly for 42" Rail Height with 2" Bottom Space	73018349	73018350
2" x 2" x 44" End Post Assembly for 42" Rail Height with 2" Bottom Space	73018339	73018340
2" x 2" x 44" Corner Post Assembly for 42" Rail Height with 2" Bottom Space	73018330	73018331
2" x 2" x 40" Mid Post Assembly for 38" Rail Height with 4" Bottom Space	73018347	73018348
2" x 2" x 40" End Post Assembly for 38" Rail Height with 4" Bottom Space	73018021	73018338
2" x 2" x 40" Corner Post Assembly for 38" Rail Height with 4" Bottom Space	73018023	73018328
2" x 2" x 38" Blank Post for 36" Rail Height (Brackets sold separately)	73018315	73018316
2" x 2" x 40" Blank Post for 38" Rail Height (Brackets sold separately)	73018317	73018022
2" x 2" x 44" Blank Post for 42" Rail Height (Brackets sold separately)	73018318	73018319
2" x 2" x 46" Blank Post for 44" Rail Height (Brackets sold separately)	73018320	73018321
2" x 2" x 48" Blank Post (Brackets sold separately)	73018322	73018323
2" x 2" x 52" Fascia Mount Post (Fascia brackets sold separately)	73019191	73019192

You may need to purchase a longer blank post for stair application depending on your installation scenario.

## 1a METALWORKS EXCALIBUR – 3" X 3" POSTS

DESCRIPTION	MATTE BLACK	HAMMERED BRONZE
3" x 3" x 38" Mid Post Assembly for 36" Rail Height with 2" Bottom Space	73044021	73044027
3" x 3" x 38" End Post Assembly for 36" Rail Height with 2" Bottom Space	73044020	73044026
3" x 3" x 38" Corner Post Assembly for 36" Rail Height with 2" Bottom Space	73044022	73044028
3" x 3" x 40" Mid Post Assembly for 38" Rail Height with 4" Bottom Space	73044024	73044030
3" x 3" x 40" End Post Assembly for 38" Rail Height with 4" Bottom Space	73044023	73044029
3" x 3" x 40" Corner Post Assembly for 38" Height Rail with 4" Bottom Space	73044025	73044031
3" x 3" x 40" Blank Post for 36" to 38" Rail Height (Brackets sold separately)	73032020	73032021
3" x 3" x 46" Blank Post for 36" to 44" Rail Height (Brackets sold separately)	73032022	73032023

You may need to purchase a longer blank post for stair application depending on your installation scenario.

## 1a METALWORKS EXCALIBUR – POSTS – CALIFORNIA ONLY\*

DESCRIPTION	MATTE BLACK	HAMMERED BRONZE
2" x 2" x 44" Mid Post Assembly for 42" Rail Height with 4" Bottom Space	73018046	73018047
2" x 2" x 44" End Post Assembly for 42" Rail Height with 4" Bottom Space	73018044	73018045
2" x 2" x 44" Corner Post Assembly for 42" Height Rail with 4" Bottom Space	73018043	73018329

\* These SKUs are CA code compliant and only housed in our west coast warehouse. They are for distribution in CA only.

# SKU LIST

## 2 METALWORKS EXCALIBUR – TRADITIONAL RAIL PANELS

DESCRIPTION	MATTE BLACK	HAMMERED BRONZE
6' x 34" Level Rail Panel – Square Baluster	<b>73018004</b>	<b>73018298</b>
8' x 34" Level Rail Panel – Square Baluster	<b>73018024</b>	<b>73018016</b>
10' x 34" Level Rail Panel – Square Baluster*	<b>73018015</b>	<b>73018291</b>
6' x 34" Stair Rail Panel – Square Baluster	<b>73018019</b>	<b>73018304</b>
8' x 34" Stair Rail Panel – Square Baluster	<b>73018310</b>	<b>73018311</b>
6' x 40" Level Rail Panel – Square Baluster	<b>73018299</b>	<b>73018300</b>
8' x 40" Level Rail Panel – Square Baluster	<b>73018018</b>	<b>73018303</b>
8' x 40" Stair Rail Panel – Square Baluster	<b>73018020</b>	<b>73018314</b>

34" panels can be installed at a finished rail height of 36" with 2" bottom space or 38" with 4" bottom space.

40" panels can be installed at a finished rail height of 42" with 2" bottom space or 44" with 4" bottom space.

\*10' Excalibur panels can be used to cut down to shorter lengths or for long spans where code compliance is not required.

## 2 METALWORKS EXCALIBUR – TRADITIONAL RAIL PANELS – CALIFORNIA ONLY\*

DESCRIPTION	MATTE BLACK	HAMMERED BRONZE
6' x 38¼" Level Rail Panel – Square Baluster	<b>73018030</b>	<b>73018031</b>
8' x 38¼" Level Rail Panel – Square Baluster	<b>73018032</b>	<b>73018033</b>
6' x 32¼" Stair Rail Panel – Square Baluster	<b>73018034</b>	<b>73018035</b>
8' x 32¼" Stair Rail Panel – Square Baluster	<b>73018036</b>	<b>73018309</b>

\* These SKUs are CA code compliant and only housed in our west coast warehouse. They are for distribution in CA only.

## 2 METALWORKS EXCALIBUR – SERPENTINE RAIL PANELS

DESCRIPTION	MATTE BLACK	HAMMERED BRONZE
6' x 34" Serpentine Level Rail Panel – Square Baluster with Design	<b>73045160</b>	<b>73045168</b>
8' x 34" Serpentine Level Rail Panel – Square Baluster with Design	<b>73045161</b>	<b>73045169</b>
6' x 40" Serpentine Level Rail Panel – Square Baluster with Design	<b>73045162</b>	<b>73045170</b>
8' x 40" Serpentine Level Rail Panel – Square Baluster with Design	<b>73045163</b>	<b>73045171</b>

## 2 METALWORKS EXCALIBUR – MOSAIC RAIL PANELS

DESCRIPTION	MATTE BLACK	HAMMERED BRONZE
6' x 34" Mosaic Level Rail Panel – Square Baluster with Design	<b>73045156</b>	<b>73045164</b>
8' x 34" Mosaic Level Rail Panel – Square Baluster with Design	<b>73045157</b>	<b>73045165</b>
6' x 40" Mosaic Level Rail Panel – Square Baluster with Design	<b>73045158</b>	<b>73045166</b>
8' x 40" Mosaic Level Rail Panel – Square Baluster with Design	<b>73045159</b>	<b>73045167</b>

## 2 METALWORKS EXCALIBUR – LATITUDES RAIL PANELS

DESCRIPTION	MATTE BLACK	HAMMERED BRONZE
6' x 34" Latitudes Level Rail Panel – Horizontal Round Rails	<b>73044057</b>	<b>N/A</b>
8' x 34" Latitudes Level Rail Panel – Horizontal Round Rails	<b>73044089</b>	<b>N/A</b>
6' x 34" Latitudes Stair Rail Panel – Horizontal Round Rails	<b>73044087</b>	<b>N/A</b>
6' x 40" Latitudes Level Rail Panel – Horizontal Round Rails	<b>73044058</b>	<b>N/A</b>
8' x 40" Latitudes Level Rail Panel – Horizontal Round Rails	<b>73044086</b>	<b>N/A</b>
6' x 40" Latitudes Stair Rail Panel – Horizontal Round Rails	<b>73044088</b>	<b>N/A</b>

## 3 METALWORKS EXCALIBUR – BRACKETS

DESCRIPTION	MATTE BLACK	HAMMERED BRONZE
Bracket Kit for Level Rail	<b>73018013</b>	<b>73018025</b>
Bracket Kit for Stair or Level Angle Rail	<b>73018014</b>	<b>73018026</b>
Imperial Decorative Bracket for Level Rail*	<b>73044946</b>	<b>73044947</b>
Scrollwork Decorative Bracket for Level Rail*	<b>73044948</b>	<b>73044949</b>
Fascia Post Bracket Kit – Mounting Hardware Not Included – For 2" Posts Only	<b>73019193</b>	<b>73019194</b>

\* Decorative brackets come with hardware to attach to either wooden posts or steel posts.

## 4 METALWORKS EXCALIBUR – ACCESSORIES

DESCRIPTION	MATTE BLACK	HAMMERED BRONZE
Top Cap Flush Bracket Kit (Set of 4)	<b>73018886</b>	<b>73018887</b>
Rail Cutting Jig – NO COLOR	<b>73018283</b>	

5 To view all the LED lighting options and details, see our LED Lighting on page 72.

## 6 METALWORKS EXCALIBUR – GATES

DESCRIPTION	MATTE BLACK	HAMMERED BRONZE
34" x 36" Gate, Assembled for 36"– 38" Rail – 36" Finished Opening	<b>73018268</b>	<b>N/A</b>
Gate Ends for 36"– 38" Rail – Custom Width – Rail Panel Sold Separately	<b>73018276</b>	<b>73018277</b>
Gate Ends for 42" Rail – Custom Width – Rail Panel Sold Separately (CA only)	<b>73018278</b>	<b>73018279</b>
Gate Ends for 42"– 44" Rail – Custom Width – Rail Panel Sold Separately	<b>73018280</b>	<b>73018281</b>
Compact Butterfly Hinge Kit Pair (Black aluminum)	<b>73024441</b>	
Gravity Latch (Black steel)	<b>73024440</b>	

## 7 TOUCH-UP PAINT

DESCRIPTION	MATTE BLACK
Touch-Up Paint Aerosol (12 oz)	<b>73044481</b>
Touch-Up Paint Bottle & Brush (½ fl oz)	<b>73044483</b>

Note: Cut rail ends may be painted with any zinc rich primer or paint. For Matte Black touch-ups, touch-up paint or Rust-Oleum® Satin Canyon Black, color code 249844 is recommended. For Hammered Bronze touch-ups, we recommend Rust-Oleum® Hammered Brown, color code 210880.

\*Rust-Oleum® is a registered trademark of Rust-Oleum Brand Company.

# ENDURANCE® ORIGINAL RAIL™

**ENDURANCE ORIGINAL RAIL** is our fully kitted vinyl railing system – with everything you need to build out your railing in one box. Simple form and dependable function unite this railing design to maintain safety without sacrificing the elegant presentation of your home or commercial space. Infill options are available in your choice of balusters: square, turned, round aluminum, or glass.





## FEATURES & BENEFITS

- Wide range of brackets to meet a variety of installation needs
- Easy stair installation accommodates 32°-38°
- Engineered strength with top and bottom aluminum stiffeners in rails
- SolarGuard® technology maintains like-new color



*Colors reproduced in print may vary from actual colors. Please see your dealer for physical color samples.*



# HOW TO ORDER

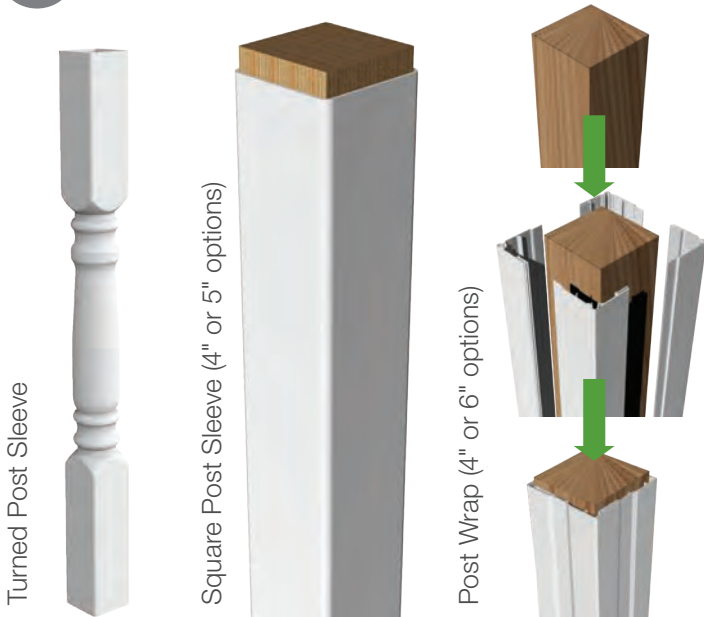
## 1 SELECT A POST

### 1a CHOOSE A STEEL STRUCTURAL POST



Structural posts come for finished railing heights of 36" and 42" in both flush and thru/fascia mount.

### 1b CHOOSE A VINYL POST SLEEVE OR WRAP



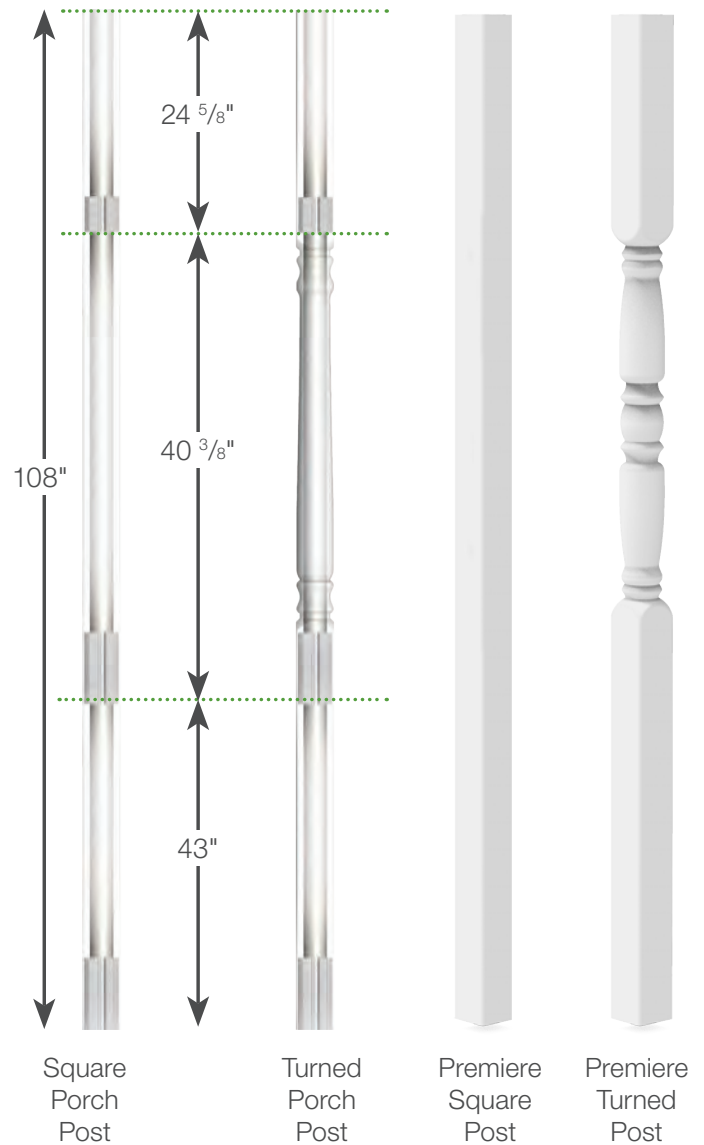
Turned post sleeve must be used with a steel structural post.

Post Wraps are covered by US patent D521,656S.

## 2 SELECT A PORCH POST

### 2a VINYL PORCH POSTS (BASE MOUNTING KIT SOLD SEPARATELY)

Porch Posts come in heights of 108" and both 4" x 4" or 5" x 5" and load capacities of 2,500 lbs or 5,000 lbs. Premiere Posts have load capacities of 4,500 lbs.



Premiere Porch Posts include mounting base. Internal blocking needed for railing connections.

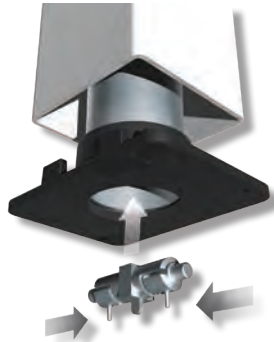
2b

### CHOOSE A VINYL POST MOUNTING KIT (REQUIRED FOR PORCH POSTS)

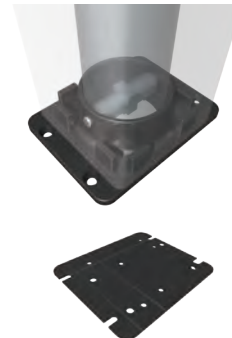
Choose from the wind uplift base (prevents wind uplift up to 2,800 lbs) or standard base.



Standard Base Kit



Wind Uplift Base Kit\*



\*The Wind Uplift base is shown in black for illustration purposes only. The PVC gasket prevents corrosion of the base plate and accommodates all Base Kits.

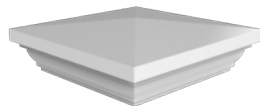
3

### CHOOSE YOUR POST CAPS

Choose from a selection of decorative post caps or for some ambience, choose a solar or low-voltage post cap.



Flat Post Cap



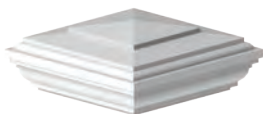
New England Post Cap



4" Elite Post Cap



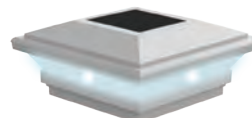
6" Elite Post Cap



Heritage Post Cap



Contemporary Post Cap

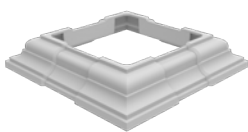


Contemporary Solar Post Cap

4

### CHOOSE YOUR TRIM RINGS

For a finished look, install a trim ring. Coordinate the style with your post cap for a look that fits your aesthetics.



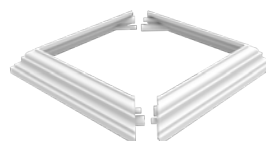
Elite Trim Ring



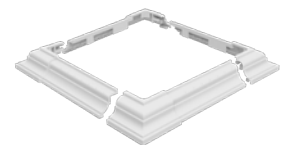
Heritage Trim Ring\*



Low Profile Trim Ring



5" 2-Piece Trim Ring



4-Piece Elite Trim Ring\*\*

\*Does not allow for a 2" bottom space when used with Endurance Original Rail.

\*\*Adjustable Elite 4-Piece Trim Ring can be installed at any time and can be adjusted to fit posts from 3½" x 3½" to 6½" x 6½" without nails, screws, or glue. 4-Piece Elite Trim Ring required for Wind Uplift Base Kit.

# HOW TO ORDER

5

## CHOOSE YOUR LEVEL AND STAIR SECTIONS.

(Square balusters shown. See below for all baluster styles). All kits available in 36" height (with 2" bottom space), square baluster kits also available in 42" height (with a 2" bottom space).

Level Kits  
4'\*  
6'  
8'  
10'\*



Support Foot  
Required for level sections over 8'  
in length



2" - 4" Level Rail Support Kit

Stair Kits  
6'  
8'



\*4' level kits not available for round aluminum, turned, or glass. 10' level kits not available for glass.

## BALUSTER STYLES



Square Balusters  
(1¼")



Turned Balusters  
(1¼")



Black Round Balusters  
(¾" Round Aluminum)



Glass Slats  
(Level only - sold separately from rail kit)



## 6

### ACCESSORY BRACKET KITS

Endurance Original Rail kits come with the level or stair brackets needed for each kit. Original Rail also offers a full line of accessory brackets for other railing installation applications.



\*Maximum straight cut for the 0° – 44° bracket is 32°. For angles of 33° – 44°, bracket must be v-notch cut.

## 7

### CHOOSE YOUR GATE KIT

A standard gate kit (36" wide opening) is available for 36" finished rail height, 1¼" square balusters, White only. Custom width gates are available in 36" and 42" finished heights with multiple color and baluster options. Custom width gates cannot exceed 48" in width. Gate hardware sold separately.



Standard Gate Kit

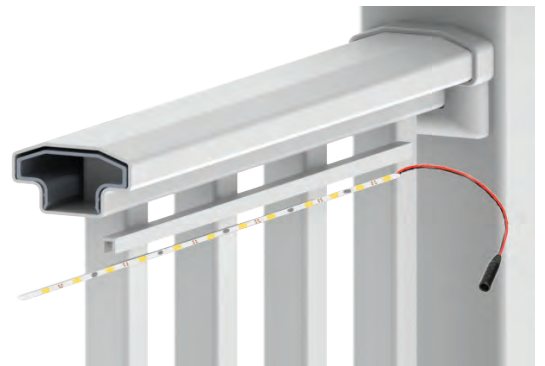


Custom Gate Kit

## 8

### CHOOSE YOUR LIGHTING OPTIONS

In addition to solar and LED post caps, our under-rail lighting gives a unique look and creates ambiance for your deck. Installs quickly and easily with our new plug-and-play wiring system, and attaches securely with its strong adhesive backing. Simply install the light strip into the light channel and use supplied adhesive to adhere to your top rail. See page 72 in LED Lighting for details on lighting systems.



# SKU LIST

1a STRUCTURAL POSTS	
DESCRIPTION	
Structural Post for 36" Rail Height – Flush Mount	73019022
Structural Post for 36" Rail Height – Thru/Fascia Mount	73019023
Structural Post for 42" Rail Height – Flush Mount	73019024
Structural Post for 42" Rail Height – Thru/Fascia Mount	73019025

1b VINYL POST SLEEVES & POST WRAPS			
DESCRIPTION	WHITE	KHAKI	SAND
4" x 4" x 39" Post Sleeve (Unit pack of 84)	61109087	61109644	73041475
4" x 4" x 39" Post Sleeve (Unit pack of 22)	73019260	N/A	N/A
4" x 4" x 45" Post Sleeve	61109088	61109645	73041476
4" x 4" x 54" Post Sleeve	73019029	N/A	N/A
4" x 4" x 100" Post Sleeve	73012479	N/A	N/A
4" x 4" x 108" Post Sleeve	61109090	61109647	73041477
4" x 4" x 120" Post Sleeve	73006803	N/A	N/A
4" x 4" x 48" Turned Post Sleeve (Requires structural post)	73018760	N/A	N/A
5" x 5" x 39" Post Sleeve	73043921	N/A	N/A
5" x 5" x 45" Post Sleeve	73043922	N/A	N/A
5" x 5" x 108" Post Sleeve	73043923	N/A	N/A
5" x 5" Post Inserts*	73019139		
6" x 6" x 54" Post Sleeve	73018734	N/A	N/A
6" x 6" x 108" Post Sleeve	73018731	73018732	73041478
6" x 6" x 144" Post Sleeve	73047640	N/A	N/A
4" x 4" x 96" – 4 Piece Post Wrap**	73018473	73018474	73041479
4" x 4" x 120" – 4 Piece Post Wrap**	73018007	73018476	73041480
6" x 6" x 96" – 4 Piece Post wrap**	73018478	73018479	73041481
6" x 6" x 120" – 4 Piece Post Wrap**	73018008	73018481	73041482

\*Post inserts are used when sleeving 4" x 4" wooden posts or structural posts.

\*\*4" x 4" Post Wrap can wrap a post from 3 3/8" square to 4 1/8" square and 6" x 6" Post Wrap can wrap a post from 5 7/16" square to 6 1/8" square.

2a VINYL PORCH POSTS (REQUIRES POST MOUNTING KIT)			
DESCRIPTION	WHITE	KHAKI	SAND
4" x 4" x 108" Square Post – 2,500 lb. Capacity	73018767	N/A	N/A
4" x 4" x 108" Turned Post – 2,500 lb. Capacity	73018752	N/A	N/A
5" x 5" x 108" Turned Post – 5,000 lb. Capacity	73018010	73018741	73041483
5" x 5" x 108" Square Post – 5,000 lb. Capacity	73018769	N/A	N/A
5" x 5" x 108" Premiere Square Post – 4,500 lb. Capacity*	73047642	N/A	N/A
5" x 5" x 108" Premiere Turned Post – 4,500 lb. Capacity*	73047641	N/A	N/A

\*Premiere posts include post mounting kits. Internal blocking not included and required if mounting railing to these posts.

## 2b PORCH POST MOUNTING KITS (REQUIRED FOR VINYL PORCH POSTS)

DESCRIPTION	
4" Standard Base Kit (Includes 1 bottom and 1 top mounting plate)	73018005
4" Wind Uplift Base Kit* (Includes 1 bottom, 1 top mounting plate, 2 pistons, and 2 PVC gaskets)	73018089
5" Standard Base Kit (Includes 1 bottom and 1 top mounting plate)	73018006
5" Wind Uplift Base Kit* (Includes 1 bottom, 1 top mounting plate, 2 pistons, and 2 PVC gaskets)	73018090

\*Wind Uplift Base Kit prevents wind uplift up to 2,800 lbs.

## 3 VINYL POST CAPS

DESCRIPTION	WHITE	KHAKI	SAND
4" x 4" Flat Post Cap	73018076	73018074	73041484
4" x 4" New England Post Cap	73044950	73044951	73044952
4" x 4" Elite Post Cap	73018073	73018071	73041485
4" x 4" Heritage Post Cap	73012500	N/A	N/A
4" x 4" Contemporary Post Cap	73019233	N/A	N/A
4" x 4" Contemporary Solar Post Cap	73019234	73045510	73045511
5" x 5" Flat Post Cap	73003093	N/A	N/A
5" x 5" New England Post Cap	73045003	N/A	N/A
5" x 5" Contemporary Post Cap	73013124	N/A	N/A
5" x 5" Contemporary Solar Post Cap	73013110	N/A	N/A
6" x 6" New England Post Cap	73018108	73018106	73041489
6" x 6" Elite Post Cap	73018105	N/A	N/A

## 4 VINYL POST TRIM RINGS

DESCRIPTION	WHITE	KHAKI	SAND
4" x 4" Elite Trim Ring	73018091	73018092	73041490
4" x 4" Heritage Trim Ring*	73012503	73045023	73045024
4" x 4" Low Profile Trim Ring	73045041	73045042	73045043
5" x 5" 2-Piece Trim Ring	73043929	N/A	N/A
3.5" to 6.5" - 4-Piece Elite Trim Ring	73018131	73018066	73041493

\*The Heritage Trim Ring will complement both the New England Post Cap and the Heritage Post Cap.

# SKU LIST

## 5 ENDURANCE ORIGINAL RAIL – 1¼" SQUARE BALUSTER KITS

DESCRIPTION	WHITE	KHAKI	SAND
4' x 36" H – Level Rail Kit	73018509	N/A	N/A
6' x 36" H – Level Rail Kit	73018009	73018527	73041395
8' x 36" H – Level Rail Kit	73018000	73018537	73041396
10' x 36" H – Level Rail Kit	73018498	N/A	N/A
6' x 36" H – 32°-38° Stair Rail Kit	73019104	73019102	73041397
8' x 36" H – 32°-38° Stair Rail Kit	73019116	73019114	73041398
6' x 42" H – Level Rail Kit	73018705	73018706	73041399
8' x 42" H – Level Rail Kit	73018708	73018709	73041400
8' x 42" H – 32°-38° Stair Rail Kit	73019125	73019123	73041402

## 5 ENDURANCE ORIGINAL RAIL – ¾" ROUND ALUMINUM BALUSTER KITS

DESCRIPTION	WHITE	KHAKI	SAND
6' x 36" H – Level Rail Kit	73018553	73018554	73041404
8' x 36" H – Level Rail Kit	73018558	73018559	73041405
10' x 36" H – Level Rail Kit	73018547	N/A	N/A
6' x 36" H – 32°-38° Stair Rail Kit	73019110	73019108	73041406
8' x 36" H – 32°-38° Stair Rail Kit	73019122	73019120	73041407

## 5 ENDURANCE ORIGINAL RAIL – 1¼" TURNED BALUSTER KITS

DESCRIPTION	WHITE
6' x 36" H – Level Rail Kit – 1¼" Turned Baluster	73018633
8' x 36" H – Level Rail Kit – 1¼" Turned Baluster	73018636
10' x 36" H – Level Rail Kit – 1¼" Turned Baluster	73018626
6' x 36" H – 32°-38° Stair Rail Kit – 1¼" Turned Baluster	73019107
8' x 36" H – 32°-38° Stair Rail Kit – 1¼" Turned Baluster	73019119

## 5 ENDURANCE ORIGINAL RAIL – GLASS SLAT KITS (SLATS SOLD SEPARATELY)

DESCRIPTION	WHITE
6' Level Rail Kit – for Glass Slats – Requires 9 Level Glass Slats	73018530
8' Level Rail Kit – for Glass Slats – Requires 12 Level Glass Slats	73018540

## 5 GLASS SLATS

DESCRIPTION	36"	42"
Glass Slats for Level Kits – Box of 9 – For Use with 6' Kits	73041331	73041332*
Glass Slats for Level Kits – Box of 12 – For Use with 8' Kits	73041333	73041334*

\*42" glass slats for residential use only.

INCLUDED IN KITS	4' LEVEL	6' LEVEL	8' LEVEL	10' LEVEL	6' STAIR	8' STAIR
1¼" Balusters (Square/turned)	9*	14	19	24	11	15
¾" Balusters (Round aluminum)	N/A	15	20	26	14	19
Glass Slats	N/A	0	0	N/A	0	N/A
Top Vinyl Rail w/ Aluminum Stiffener	1	1	1	1	1	1
Bottom Vinyl Rail w/ Aluminum Stiffener	1	1	1	1	1	1
Bracket Kit (2 top, 2 bottom)	1	1	1	1	1	1
Support Foot (Glass kits only)**	N/A	1	1	N/A	0	0

\*4' kits only available in 1¼" square balusters, not available for turned balusters.

\*\* Support foot required for glass railing sections 6' to 8'.

## 6 ENDURANCE ORIGINAL RAIL – ACCESSORIES

DESCRIPTION	WHITE	KHAKI	SAND
Level Mounting Bracket Kit – 2 Pairs	73019016	73019018	73041408
Stair Mounting Bracket Kit – 2 Pairs	73019017	73019019	73041409
Round Column Mounting Bracket Kit – 1 Pair	73018115	73018113	73041410
Paintable Round Column Mounting Bracket Adapter Kit – 1 Pair	73018116	N/A	N/A
0° to 44° Level Mounting Bracket Kit – 1 Pair	73018065	73018017	73041411
45° Level Mounting Bracket Kit – 1 Pair	73018086	73018084	73041412
2" – 4" Level Rail Support Kit	73018129	73018127	73041494

Level rail support required for lengths over 8' (10' panels being used at any lengths longer than 8'). Endurance Original Rail kits (except glass kits) do not include a support foot.

## 7a VINYL RAIL GATE KITS

DESCRIPTION	WHITE	KHAKI	SAND
Standard Width Gate Kit – 36" H – 1¼" Square Balusters	73018135	N/A	N/A
Custom Width Gate Kit – 36" H – 1¼" Square Balusters	73045025	73045026	73045027
Custom Width Gate Kit – 36" H – 1½" Square Balusters	73045028	73045029	73045030
Custom Width Gate Kit – 36" H – 1¼" Turned Balusters	73045034	N/A	N/A
Custom Width Gate Kit – 36" H – 1½" Turned Balusters	73045044	73045045	73045046
Custom Width Gate Kit – 36" H – ¾" Round Balusters	73045031	73045032	73045033
Custom Width Gate Kit – 42" H – 1¼" Square Balusters	73045035	73045036	73045037
Custom Width Gate Kit – 42" H – 1½" Square Balusters	73045038	73045039	73045040

Standard gate kit has a maximum opening width of 36". Custom gate kits have a maximum width opening up to 48". Gate kits include everything to build a gate panel. Gate hardware sold separately.

## 7b VINYL GATE HARDWARE

DESCRIPTION	BLACK	WHITE
Standard Wrap Hinge Pair	73028117	73025512
Two Sided Locking Latch	73024418	73025501
Gravity Latch	73002252	73025491
24" Heavy Duty Drop Rod	73014305	73014306

8 To view all the LED lighting options and details, see our LED Lighting on page 72.

# FINYL LINE™

**FINYL LINE** low-maintenance vinyl railing, reinforced with strong aluminum, adds character to your home while providing safety and security. Easy to install and code compliant for residential (IRC) & commercial (IBC), Finyl Line is sure to meet your railing needs. Select from a traditional T-Top profile or a Deck Top profile, and your choice of traditional square, elegant turned, or classic round aluminum balusters with kits available in White, Khaki, or Sand.





## FEATURES & BENEFITS

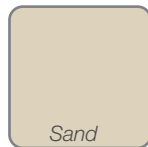
- Engineered strength with reinforced top and bottom rails to prevent sagging for a strong rail section
- Brackets are included in kits with bracket covers that conceal hardware for a clean finished look
- Top rail profiles include traditional T-Top or Deck Top that allows you to add a deck board to create a cocktail rail
- SolarGuard® technology maintains like-new color



White



Khaki



Sand

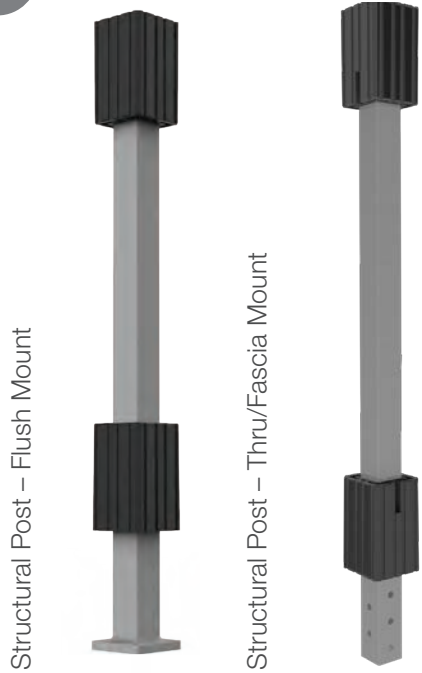
*Colors reproduced in print may vary from actual colors. Please see your dealer for physical color samples.*



# HOW TO ORDER

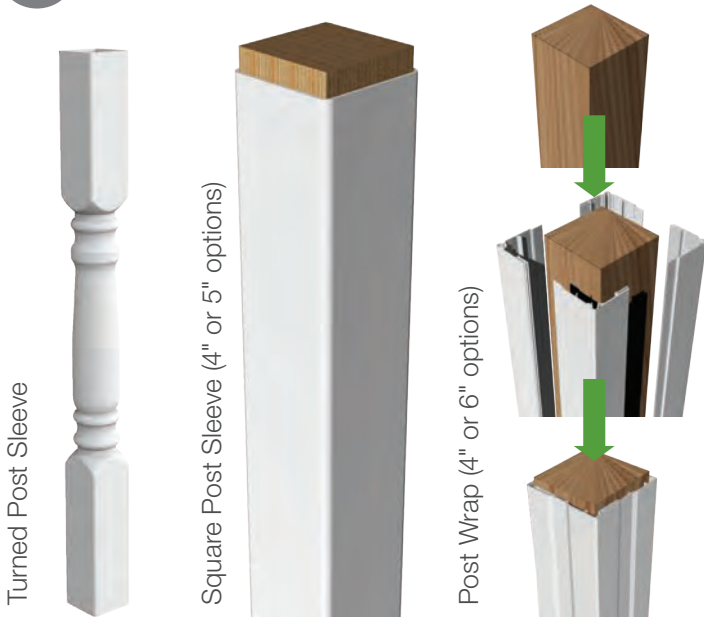
## 1 SELECT A POST

### 1a CHOOSE A STEEL STRUCTURAL POST



Structural posts come for finished railing heights of 36" and 42" in both flush and thru/fascia mount.

### 1b CHOOSE A VINYL POST SLEEVE OR WRAP



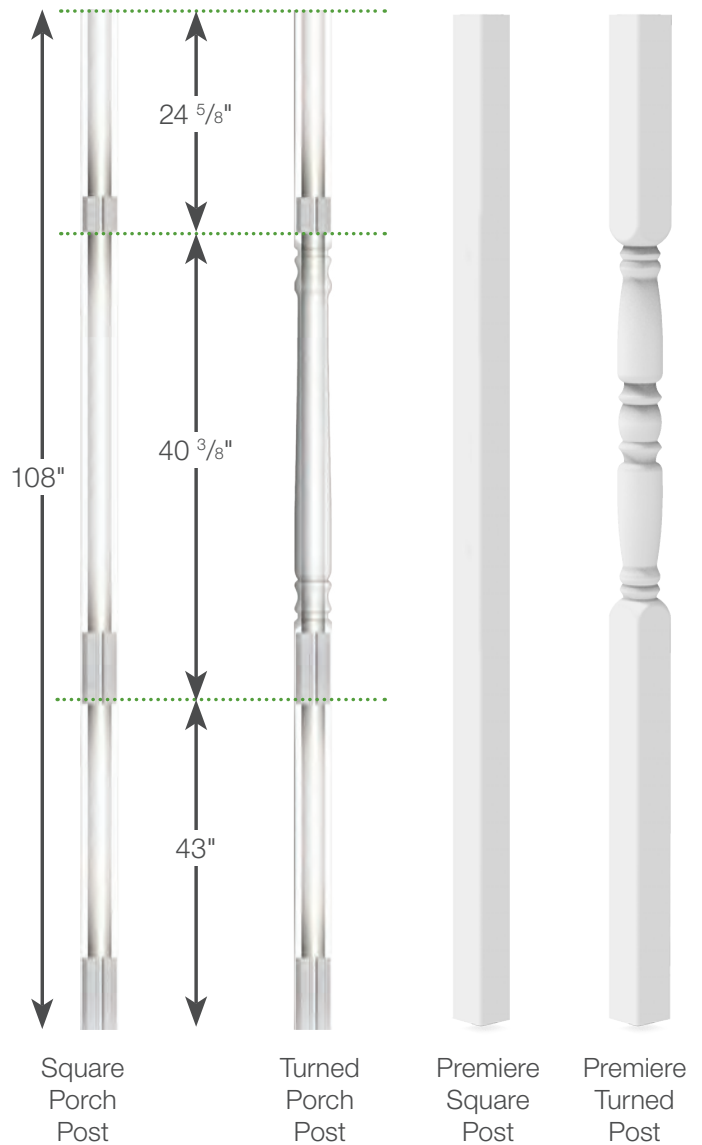
Turned post sleeve must be used with a steel structural post.

Post Wraps are covered by US patent D521,656S.

## 2 SELECT A PORCH POST

### 2a VINYL PORCH POSTS (BASE MOUNTING KIT SOLD SEPARATELY)

Porch Posts come in heights of 108" and both 4" x 4" or 5" x 5" and load capacities of 2,500 lbs or 5,000 lbs. Premiere Posts have load capacities of 4,500 lbs.



Premiere Porch Posts include mounting base. Internal blocking needed for railing connections.



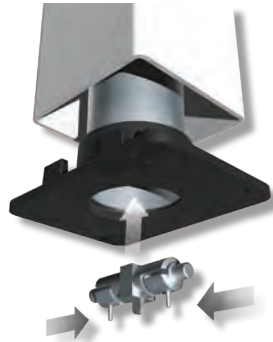
2b

### CHOOSE A VINYL POST MOUNTING KIT (REQUIRED FOR PORCH POSTS)

Choose from the wind uplift base (prevents wind uplift up to 2,800 lbs) or standard base.



Standard Base Kit



Wind Uplift Base Kit\*

\*The Wind Uplift base is shown in black for illustration purposes only. The PVC gasket prevents corrosion of the base plate and accommodates all Base Kits.

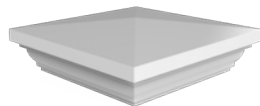
3

### CHOOSE YOUR POST CAPS

Choose from a selection of decorative post caps or for some ambiance, choose a solar or low-voltage post cap.



Flat Post Cap



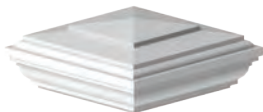
New England Post Cap



4" Elite Post Cap



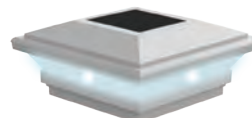
6" Elite Post Cap



Heritage Post Cap



Contemporary Post Cap

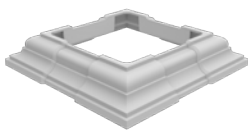


Contemporary Solar Post Cap

4

### CHOOSE YOUR TRIM RINGS

For a finished look, install a trim ring. Coordinate the style with your post cap for a look that fits your aesthetics.



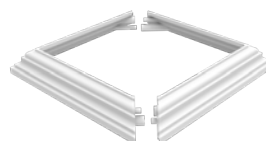
Elite Trim Ring



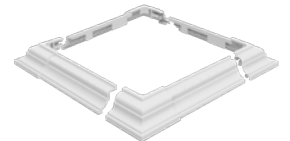
Heritage Trim Ring\*



Low Profile Trim Ring



5" 2-Piece Trim Ring



4-Piece Elite Trim Ring\*\*

\*Does not allow for a 2" bottom space when used with Endurance Original Rail.

\*\*Adjustable Elite 4-Piece Trim Ring can be installed at any time and can be adjusted to fit posts from 3½" x 3½" to 6½" x 6½" without nails, screws, or glue. 4-Piece Elite Trim Ring Required for Wind Uplift Base Kit.

# HOW TO ORDER

## 5 CHOOSE YOUR T-TOP OR DECK TOP LEVEL AND STAIR SECTIONS

(Square balusters shown. See below for all baluster styles). Kits available in 36" height (with 2" bottom space); square baluster kits also available in 42" height (with a 2" bottom space).

### Top Rail Profiles



T-Top Profile



Deck Top Profile

### Level Kits

- 4'\*
- 5'\*
- 6'
- 8'
- 10'\*



\*Select colors and styles not available in 4', 5', and 10' lengths.

### Stair Kits

- 6'\*
- 8'



\*Select colors and styles not available in 6' stair kits.

## 5 CHOOSE YOUR BALUSTER STYLES

All rail kits include balusters; 3 baluster styles available.



Square Balusters (1 1/2")



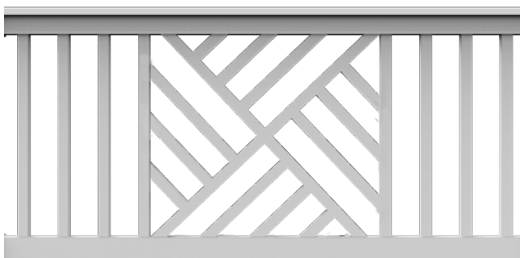
Turned Balusters (1 1/2")



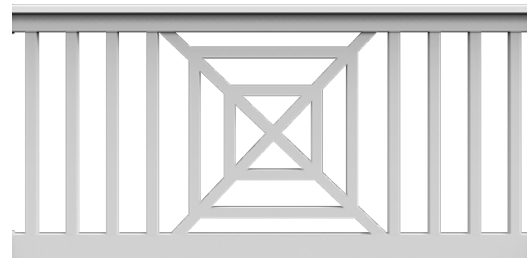
Black Aluminum Balusters (3/4" Round)

## 5 CHOOSE YOUR T-TOP DECORATIVE INFILL PRE-BUILT PANEL

Available only in White with Square Balusters. Panels are 36" height (with 2" bottom space) and in lengths of 6', 8', or 10'. Pre-built panels do NOT include brackets.



Chippendale



Freeport

## 6

### BRACKET KITS

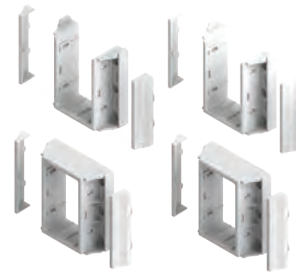
All Finyl Line rail kits include brackets. Brackets also sold separately including swivel brackets for T-Top rails and bracket adapters.



T-Top Level Brackets



T-Top Swivel Level-Angle Brackets (0-44°)



Deck Top Level Brackets



Round Column Adapter for 8" Columns



T-Top Stair Brackets (26-38°)



Deck Top Stair Brackets (26-38°)



22.5° Adapter



T-Top Angle Brackets



T-Top Swivel Stair Brackets (0-45°)



Deck Top Angle Brackets



45° Adapter

## 7

### CHOOSE YOUR GATE KIT

A standard gate kit (36" wide opening) is available for 36" finished rail height, 1 1/4" square balusters, White only. Custom width gates are available in 36" and 42" finished heights with multiple color and baluster options. Custom width gates cannot exceed 48" in width. Gate hardware sold separately.



Standard Gate Kit



Custom Gate Kit

## 8

SEE PAGE 72 FOR LED LIGHTING OPTIONS.

# SKU LIST

## 1a STRUCTURAL POSTS

DESCRIPTION	
Structural Post for 36" Rail Height – Flush Mount	73019022
Structural Post for 36" Rail Height – Thru/Fascia Mount	73019023
Structural Post for 42" Rail Height – Flush Mount	73019024
Structural Post for 42" Rail Height – Thru/Fascia Mount	73019025

## 1b VINYL POST SLEEVES & POST WRAPS

DESCRIPTION	WHITE	KHAKI	SAND
4" x 4" x 39" Post Sleeve (Unit pack of 84)	61109087	61109644	73041475
4" x 4" x 39" Post Sleeve (Unit pack of 22)	73019260	N/A	N/A
4" x 4" x 45" Post Sleeve	61109088	61109645	73041476
4" x 4" x 54" Post Sleeve	73019029	N/A	N/A
4" x 4" x 100" Post Sleeve	73012479	N/A	N/A
4" x 4" x 108" Post Sleeve	61109090	61109647	73041477
4" x 4" x 120" Post Sleeve	73006803	N/A	N/A
4" x 4" x 48" Turned Post Sleeve (Requires structural post)	73018760	N/A	N/A
5" x 5" x 39" Post Sleeve	73043921	N/A	N/A
5" x 5" x 45" Post Sleeve	73043922	N/A	N/A
5" x 5" x 108" Post Sleeve	73043923	N/A	N/A
5" x 5" Post Inserts*	73019139		
6" x 6" x 54" Post Sleeve	73018734	N/A	N/A
6" x 6" x 108" Post Sleeve	73018731	73018732	73041478
6" x 6" x 144" Post Sleeve	73047640	N/A	N/A
4" x 4" x 96" – 4 Piece Post Wrap**	73018473	73018474	73041479
4" x 4" x 120" – 4 Piece Post Wrap**	73018007	73018476	73041480
6" x 6" x 96" – 4 Piece Post wrap**	73018478	73018479	73041481
6" x 6" x 120" – 4 Piece Post Wrap**	73018008	73018481	73041482

\*Post inserts are used when sleeving 4" x 4" wooden posts or structural posts.

\*\*4" x 4" Post Wrap can wrap a post from 3 3/8" square to 4 1/8" square and 6" x 6" Post Wrap can wrap a post from 5 7/16" square to 6 1/8" square.

## 2a VINYL PORCH POSTS (REQUIRES POST MOUNTING KIT)

DESCRIPTION	WHITE	KHAKI	SAND
4" x 4" x 108" Square Post – 2,500 lb. Capacity	73018767	N/A	N/A
4" x 4" x 108" Turned Post – 2,500 lb. Capacity	73018752	N/A	N/A
5" x 5" x 108" Turned Post – 5,000 lb. Capacity	73018010	73018741	73041483
5" x 5" x 108" Square Post – 5,000 lb. Capacity	73018769	N/A	N/A
5" x 5" x 108" Premiere Square Post – 4,500 lb. Capacity*	73047642	N/A	N/A
5" x 5" x 108" Premiere Turned Post – 4,500 lb. Capacity*	73047641	N/A	N/A

Premiere posts include post mounting kits. Internal blocking not included and required if mounting railing to these posts.

## 2b PORCH POST MOUNTING KITS (REQUIRED FOR VINYL PORCH POSTS)

DESCRIPTION	
4" Standard Base Kit (Includes 1 bottom and 1 top mounting plate)	73018005
4" Wind Uplift Base Kit* (Includes 1 bottom, 1 top mounting plate, 2 pistons, and 2 PVC gaskets)	73018089
5" Standard Base Kit (Includes 1 bottom and 1 top mounting plate)	73018006
5" Wind Uplift Base Kit* (Includes 1 bottom, 1 top mounting plate, 2 pistons, and 2 PVC gaskets)	73018090

\*Wind Uplift Base Kit prevents wind uplift up to 2,800 lbs.

## 3 VINYL POST CAPS

DESCRIPTION	WHITE	KHAKI	SAND
4" x 4" Flat Post Cap	73018076	73018074	73041484
4" x 4" New England Post Cap	73044950	73044951	73044952
4" x 4" Elite Post Cap	73018073	73018071	73041485
4" x 4" Heritage Post Cap	73012500	N/A	N/A
4" x 4" Contemporary Post Cap	73019233	N/A	N/A
4" x 4" Contemporary Solar Post Cap	73019234	73045510	73045511
5" x 5" Flat Post Cap	73003093	N/A	N/A
5" x 5" New England Post Cap	73045003	N/A	N/A
5" x 5" Contemporary Post Cap	73013124	N/A	N/A
5" x 5" Contemporary Solar Post Cap	73013110	N/A	N/A
6" x 6" New England Post Cap	73018108	73018106	73041489
6" x 6" Elite Post Cap	73018105	N/A	N/A

## 4 VINYL POST TRIM RINGS

DESCRIPTION	WHITE	KHAKI	SAND
4" x 4" Elite Trim Ring	73018091	73018092	73041490
4" x 4" Heritage Trim Ring*	73012503	73045023	73045024
4" x 4" Low Profile Trim Ring	73045041	73045042	73045043
5" x 5" 2-Piece Trim Ring	73043929	N/A	N/A
3.5" to 6.5" – 4-Piece Elite Trim Ring	73018131	73018066	73041493

\*The Heritage Trim Ring will complement both the New England Post Cap and the Heritage Post Cap.

# SKU LIST

## 5 FINYL LINE T-TOP – 1½" SQUARE BALUSTER RAIL KITS – 36" HEIGHT

DESCRIPTION	WHITE	WHITE*	KHAKI	SAND
4' x 36" H – Level Rail Kit	73019536	73019688	N/A	N/A
5' x 36" H – Level Rail Kit	73019560	N/A	N/A	N/A
6' x 36" H – Level Rail Kit	73019603	73019690	73019587	73041503
8' x 36" H – Level Rail Kit	73019652	73019691	73019636	73041563
10' x 36" H – Level Rail Kit	73019517	73019687	73019510	73041504
6' x 36" H – 26°-38° Stair Rail Kit	73019599	73019600	73019593	73041505
8' x 36" H – 26°-38° Stair Rail Kit	73019648	73019649	73019642	73041506
10' x 36" H – 26°-38° Stair Rail Kit	73019515	N/A	N/A	N/A

\*Packed in clear see-through shrink "toughpack"; all other kits boxed.

## 5 FINYL LINE T-TOP – 1½" SQUARE BALUSTER RAIL KITS – 42" HEIGHT

DESCRIPTION	WHITE	KHAKI	SAND
4' x 42" H – Level Rail Kit	73019543	N/A	N/A
5' x 42" H – Level Rail Kit	73019567	N/A	N/A
6' x 42" H – Level Rail Kit	73019616	73019611	73041509
8' x 42" H – Level Rail Kit	73019665	73019660	73041510
6' x 42" H – 26°-38° Stair Rail Kit	73019615	N/A	N/A
8' x 42" H – 26°-38° Stair Rail Kit	73019664	73019662	73041512

## 5 FINYL LINE T-TOP – 1½" TURNED BALUSTER RAIL KITS – 36" HEIGHT

DESCRIPTION	WHITE	KHAKI	SAND
4' x 36" H – Level Rail Kit	73019537	N/A	N/A
6' x 36" H – Level Rail Kit	73019604	73019588	73041515
8' x 36" H – Level Rail Kit	73019653	73019637	73041516
10' x 36" H – Level Rail Kit	73019519	73019511	73041517
6' x 36" H – 26°-38° Stair Rail Kit	73019601	N/A	N/A
8' x 36" H – 26°-38° Stair Rail Kit	73019650	73019643	73041519

## 5 FINYL LINE T-TOP – 3/4" ROUND ALUMINUM BALUSTER RAIL KITS – 36" HEIGHT

DESCRIPTION	WHITE	KHAKI	SAND
4' x 36" H – Level Rail Kit	73019535	N/A	N/A
6' x 36" H – Level Rail Kit	73019602	73019586	73041522
8' x 36" H – Level Rail Kit	73019651	73019635	73041523
10' x 36" H – Level Rail Kit	73019516	73019509	73041524
6' x 36" H – 26°-38° Stair Rail Kit	73019598	N/A	N/A
8' x 36" H – 26°-38° Stair Rail Kit	73019647	73019641	73041526

INCLUDED IN KITS	4' LEVEL	5' LEVEL	6' LEVEL	8' LEVEL	10' LEVEL	6' STAIR	8' STAIR
1½" Balusters (Square/turned)	9	11	13	18	20	12	16
¾" Balusters (Round aluminum)	10	13	15	20	26	12	17
Top Vinyl Rail	1	1	1	1	1	1	1
Top Aluminum Stiffener	1	1	1	1	1	1	1
Bottom Vinyl Rail	1	1	1	1	1	1	1
Bottom Aluminum Stiffener	1	1	1	1	1	1	1
Bracket Kit (2 top, 2 bottom)	1	1	1	1	1	1	1
Support Foot	N/A	N/A	N/A	N/A	1	N/A	N/A

## 5 FINYL LINE T-TOP – DECORATIVE INFILL PRE-BUILT PANELS – 36" HEIGHT

DESCRIPTION	WHITE
6' x 36" H – Chippendale Level Rail Panel	73047634
8' x 36" H – Chippendale Level Rail Panel	73047635
10' x 36" H – Chippendale Level Rail Panel	73047636
6' x 36" H – Freeport Level Rail Panel	73047637
8' x 36" H – Freeport Level Rail Panel	73047638
10' x 36" H – Freeport Level Rail Panel	73047639

Decorative infill SKUs come as a pre-built panels. Brackets not included with rail panels; must be purchased separately.

# SKU LIST

## 5 FINYL LINE DECK TOP – 1½" SQUARE BALUSTER RAIL KITS – 36" HEIGHT

DESCRIPTION	WHITE	KHAKI	SAND
6' x 36" H – Level Rail Kit	73019584	73019569	73041529
8' x 36" H – Level Rail Kit	73019633	73019618	73041530
10' x 36" H – Level Rail Kit	73019518	N/A	N/A
6' x 36" H – 26°-38° Stair Rail Kit	73019581	N/A	N/A
8' x 36" H – 26°-38° Stair Rail Kit	73019630	73019624	73041533

## 5 FINYL LINE DECK TOP – 1½" SQUARE BALUSTER RAIL KITS – 42" HEIGHT

DESCRIPTION	WHITE	KHAKI	SAND
6' x 42" H – Level Rail Kit	73019610	N/A	N/A
8' x 42" H – Level Rail Kit	73019659	N/A	N/A
8' x 42" H – 26°-38° Stair Rail Kit	73019658	N/A	N/A

## 5 FINYL LINE DECK TOP – 1½" TURNED BALUSTER RAIL KITS – 36" HEIGHT

DESCRIPTION	WHITE	KHAKI	SAND
6' x 36" H – Level Rail Kit	73019585	N/A	N/A
8' x 36" H – Level Rail Kit	73019634	N/A	N/A
10' x 36" H – Level Rail Kit	73019508	N/A	N/A
6' x 36" H – 26°-38° Stair Rail Kit	73019582	N/A	N/A
8' x 36" H – 26°-38° Stair Rail Kit	73019631	N/A	N/A

## 5 FINYL LINE DECK TOP – ¾" ROUND ALUMINUM BALUSTER RAIL KITS – 36" HEIGHT

DESCRIPTION	WHITE	KHAKI	SAND
6' x 36" H – Level Rail Kit	73019583	73019568	73041549
8' x 36" H – Level Rail Kit	73019632	73019617	73041550
10' x 36" H – Level Rail Kit	73019507	N/A	N/A
6' x 36" H – 26°-38° Stair Rail Kit	73019580	N/A	N/A
8' x 36" H – 26°-38° Stair Rail Kit	73019629	73019623	73041553

INCLUDED IN KITS	6' LEVEL	8' LEVEL	10' LEVEL	6' STAIR	8' STAIR
1½" Balusters (Square/turned)	13	18	20	12	16
¾" Balusters (Round aluminum)	15	20	26	12	17
Top Vinyl Rail	1	1	1	1	1
Top Aluminum Stiffener	1	1	1	1	1
Bottom Vinyl Rail	1	1	1	1	1
Bottom Aluminum Stiffener	1	1	1	1	1
Bracket Kit (2 top, 2 bottom)	1	1	1	1	1
Support Foot	N/A	N/A	1	N/A	N/A



## 6 FINYL LINE T-TOP BRACKET KITS

DESCRIPTION	WHITE	KHAKI	SAND
Level Bracket Set (2 top & 2 bottom brackets)	73019685	73019681	73041560
Stair Bracket Set (2 top & 2 bottom brackets)	73019686	73019682	73041561
Angle Bracket Set (1 pair – cut to desired angle)	73021923	73021924	73041562
Swivel Level-Angle Bracket Set (2 top & 2 bottom brackets)	73018805	N/A	N/A
Swivel Stair Bracket Set (2 top & 2 bottom brackets)	73018804	N/A	N/A

## 6 FINYL LINE DECK TOP BRACKET KITS

DESCRIPTION	WHITE	KHAKI	SAND
Level Bracket Set (2 top & 2 bottom brackets)	73019670	73019666	73041554
Stair Bracket Set (2 top & 2 bottom brackets)	73019671	73019667	73041555
Angle Bracket Set (1 pair – cut to desired angle)	73021926	73021927	73041556

## 6 FINYL LINE COLUMN & ANGLE ADAPTERS

DESCRIPTION	WHITE	KHAKI	SAND
8" Round Column Adapter (2 pack)	73019680	73019674	73041557
45° Angle Adapter (1 top & 1 bottom brackets)	73019679	73019673	73041558
22.5° Angle Adapter (1 top & 1 bottom brackets)	73019678	73019672	73041559

## 7a VINYL RAIL GATE KITS

DESCRIPTION	WHITE	KHAKI	SAND
Standard Width Gate Kit – 36" H – 1¼" Square Balusters	73018135	N/A	N/A
Custom Width Gate Kit – 36" H – 1¼" Square Balusters	73045025	73045026	73045027
Custom Width Gate Kit – 36" H – 1½" Square Balusters	73045028	73045029	73045030
Custom Width Gate Kit – 36" H – 1¼" Turned Balusters	73045034	N/A	N/A
Custom Width Gate Kit – 36" H – 1½" Turned Balusters	73045044	73045045	73045046
Custom Width Gate Kit – 36" H – ¾" Round Balusters	73045031	73045032	73045033
Custom Width Gate Kit – 42" H – 1¼" Square Balusters	73045035	73045036	73045037
Custom Width Gate Kit – 42" H – 1½" Square Balusters	73045038	73045039	73045040

Standard gate kit has a maximum opening width of 36". Custom gate kits have a maximum width opening up to 48". Gate kits include everything to build a gate panel. Gate hardware sold separately.

## 7b VINYL GATE HARDWARE

DESCRIPTION	BLACK	WHITE
Standard Wrap Hinge Pair	73028117	73025512
Two Sided Locking Latch	73024418	73025501
Gravity Latch	73002252	73025491
24" Heavy Duty Drop Rod	73014305	73014306

8 To view all the LED lighting options and details, see our LED Lighting on page 72.

# TITAN PRO RAIL®

**TITAN PRO RAIL** was created with the installer in mind. A Titan rail section assembles in minutes and is ideal for residential and commercial applications. Metal-to-metal connections add to the sound engineering that enables easy and safe installations. Titan vinyl-clad aluminum railing is manufactured using the highest quality materials to meet your performance and building requirements.



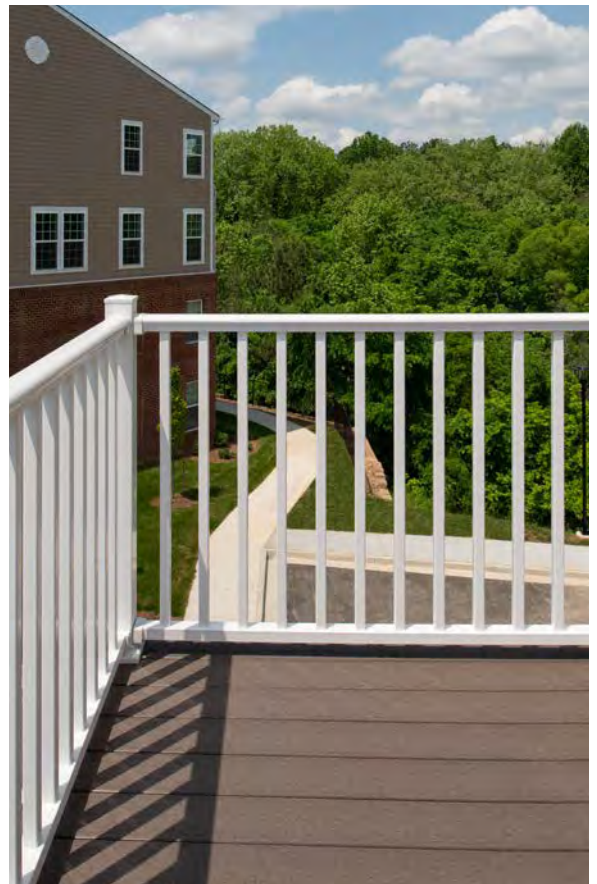


## FEATURES & BENEFITS

- Pre-assembled posts contain an interior galvanized heavy duty post with welded flange for mounting
- Top rail profile meets IRC code for stair graspability – no secondary hand rail needed in non-continuous applications
- Pre-attached brackets for corner, mid, and end posts save valuable installation time and ensure code-compliant bottom spacing



*Colors reproduced in print may vary from actual colors. Please see your dealer for physical color samples.*



# HOW TO ORDER

## 1 CHOOSE A POST

Titan Pro posts are available in White only. For Khaki post options, see step 3.



Blank Posts



Mid Posts



Corner Posts



End Posts

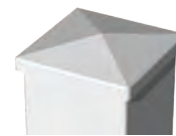
Post kits include steel post insert, vinyl sleeve, brackets with covers (except blank posts), trim ring, and two vinyl shims. Titan Posts with sleeve are 3.4" x 3.4" square and bottom brackets are set for a 2" bottom space.

## 2 CHOOSE A POST CAP

Titan Post Caps are designed to fit on Titan posts.



Decorative Cap



Flat Cap

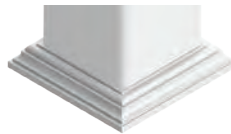
## 3 ADDITIONAL POST OPTIONS

If you're installing Titan Pro using existing 4" x 4" or 6" x 6" wood posts, or wish to use Khaki posts, choose your level & stair sections (step 4), & then purchase a bracket set for each rail section (see step 5). Finally, choose your finishing touches from our vinyl posts and post accessories on page 42.

### a CHOOSE A POST SLEEVE

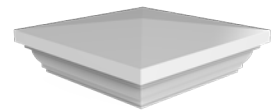


### b CHOOSE A TRIM RING\*



*\*Only the Low Profile or 4-piece Adjustable trim ring provide sufficient clearance for Titan bottom brackets*

### c CHOOSE A POST CAP



## 4 CHOOSE YOUR LEVEL AND STAIR SECTIONS

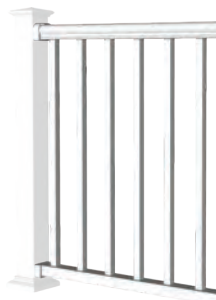
Titan kits available with 1 1/4" square balusters. Brackets for each section need to be purchased separately if not using a Titan post. Available for a 36" finished height (with 2" bottom space) and available in 42" commercial height (with 2" bottom space).

### Level Kits

6'

8'

10'



### Stair Kits

6'

8'



# 5

## BRACKET KITS

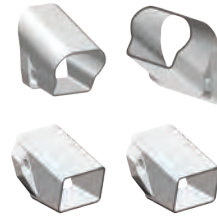
Titan Pro posts come with pre-attached level brackets on all but blank posts. If using Titan blank posts (for stair or level) or non-Titan posts, bracket kits must be purchased separately.



Level Bracket Kit



Stair Bracket Kit



No-Cut Stair Bracket Kit



45° Bracket Adapter



22.5° Bracket Adapter



Round Column Adapter  
for 8" Columns



Bracket Jig

# 6

## CHOOSE YOUR GATE KIT

A standard gate kit (36" wide opening) is available for 36" finished rail height, 1 1/4" square balusters, White only. Custom width gates are available in 36" and 42" finished heights with multiple color and baluster options. Custom width gates cannot exceed 48" in width. Gate hardware sold separately.



Standard Gate Kit

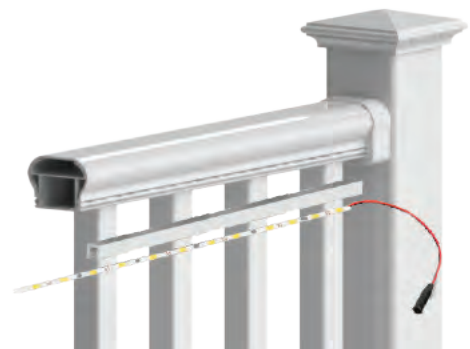


Custom Gate Kit

# 7

## CHOOSE YOUR LIGHTING OPTIONS

Adding under-rail lighting gives a unique look and creates ambiance for your deck. Installs quickly and easily with our new plug-and-play wiring system, and attaches securely with its strong adhesive backing. Simply install the light strip into the light channel and use the supplied adhesive to adhere to your top rail. Solar and LED post caps are available for use with 4" and 5" posts. See page 72 for all the lighting options.



# SKU LIST

## 1 TITAN PRO RAIL – POST KITS – with 2" BOTTOM SPACE

DESCRIPTION	WHITE
3.4" x 3.4" x 38.125" Blank Post Assembly for 36" Railing Height	73018657
3.4" x 3.4" x 38.125" End-Post Assembly for 36" Railing Height	73018662
3.4" x 3.4" x 38.125" Mid-Post Assembly for 36" Railing Height	73018664
3.4" x 3.4" x 38.125" Corner Post Assembly for 36" Railing Height	73018660
3.4" x 3.4" x 44.125" Blank Post Assembly for 42" Railing Height	73018658
3.4" x 3.4" x 44.125" End-Post Assembly for 42" Railing Height	73018663
3.4" x 3.4" x 44.125" Mid-Post Assembly for 42" Railing Height	73018665
3.4" x 3.4" x 44.125" Corner Post Assembly for 42" Railing Height	73018661
3.4" x 3.4" x 50.125" Blank Post Assembly for 42" Railing Height – (For stairs)	73018659

Post kits include steel post insert, vinyl sleeve, brackets with covers (except blank posts), trim ring, and two vinyl shims.

## 2 TITAN PRO RAIL – ACCESSORIES

DESCRIPTION	WHITE
Flat Post Cap	73018242
Decorative Post Cap	73018240

Titan post caps are designed to fit Titan posts only.

3 For other post options (including 4" x 4", 5" x 5", or 6" x 6", and structural posts) and additional accessories if not using a Titan post, see our vinyl posts and post accessories on page 42.

## 4 TITAN PRO RAIL – RAIL KITS – 1¼" SQUARE BALUSTER

DESCRIPTION	WHITE	KHAKI
6' x 36" H – Level Rail Kit	73018163	73018165
8' x 36" H – Level Rail Kit	73018012	73018171
10' x 36" H – Level Rail Kit	73018157	73018159
6' x 36" H – 32°-38° Stair Rail Kit	73018200	73018202
8' x 36" H – 32°-38° Stair Rail Kit	73018207	N/A
6' x 42" H – Level Rail Kit	73018167	73018168
8' x 42" H – Level Rail Kit	73018173	73018174
10' x 42" H – Level Rail Kit	73018161	73018162
6' x 42" H – 32°-38° Stair Rail Kit	73018204	73018205
8' x 42" H – 32°-38° Stair Rail Kit	73018211	N/A

Brackets not included in rail kits. Titan posts come with pre-attached brackets for ease of install for level applications; if not using Titan posts, level brackets must be purchased separately from your rail kit. Stair brackets sold separately.

INCLUDED IN KITS	6' LEVEL	8' LEVEL	10' LEVEL	6' STAIR	8' STAIR
1¼" Square Balusters	14	19	24	11	15
Top Vinyl Rail	1	1	1	1	1
Top Aluminum Stiffener	1	1	1	1	1
Bottom Vinyl Rail	1	1	1	1	1
Bottom Aluminum Stiffener	1	1	1	1	1
Support Foot	1	1	1	0	0

## 5 TITAN PRO RAIL – BRACKET ACCESSORIES

DESCRIPTION	WHITE	KHAKI
Level Bracket Kit – 2 Pair (4 steel brackets & 4 vinyl bracket covers)	73018011	73018228
Stair Bracket Kit – 2 Pair (4 steel brackets & 4 vinyl bracket covers)	73018229	73018232
No-Cut Stair Bracket Kit – 2 Pair	73018230	73018231
45° Bracket Adapter Kit – 1 Pair	73018225	73018226
22.5° Bracket Adapter Kit – 1 Pair	73018223	73018224
Round Column Adapter Kit – 1 Pair	73018251	N/A
Level Bracket Attachment Jig (No color)	73018227	
2-Piece Trim Ring*	73018915	

\*Titan posts include 2-piece trim ring; if a replacement is needed, this item can be ordered.

## 6a VINYL RAIL GATE KITS

DESCRIPTION	WHITE	KHAKI
Standard Width Gate Kit – 36" H – 1¼" Square Balusters	73018135	N/A
Custom Width Gate Kit – 36" H – 1¼" Square Balusters	73045025	73045026
Custom Width Gate Kit – 36" H – 1½" Square Balusters	73045028	73045029
Custom Width Gate Kit – 36" H – 1¼" Turned Balusters	73045034	N/A
Custom Width Gate Kit – 36" H – 1½" Turned Balusters	73045044	73045045
Custom Width Gate Kit – 36" H – ¾" Round Balusters	73045031	73045032
Custom Width Gate Kit – 42" H – 1¼" Square Balusters	73045035	73045036
Custom Width Gate Kit – 42" H – 1½" Square Balusters	73045038	73045039

Standard gate kit has a maximum opening width of 36". Custom gate kits have a maximum width opening up to 48". Gate kits include everything to build a gate panel. Gate hardware sold separately.

## 6b VINYL GATE HARDWARE

DESCRIPTION	BLACK	WHITE
Standard Wrap Hinge Pair	73028117	73025512
Two Sided Locking Latch	73024418	73025501
Gravity Latch	73002252	73025491
24" Heavy Duty Drop Rod	73014305	73014306

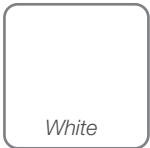
7 To view all the LED lighting options and details, see our LED Lighting on page 72.

# ADA HAND RAIL

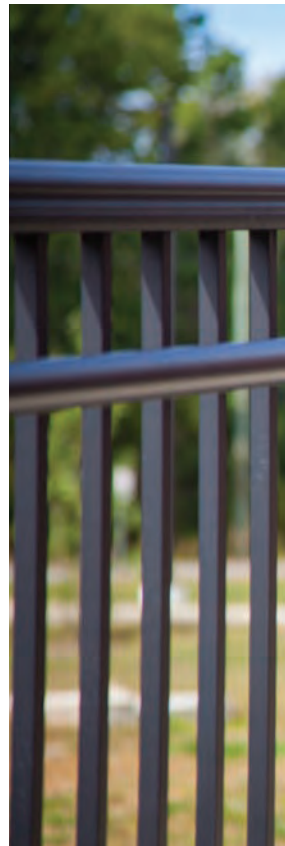


**VINYL ADA HAND RAIL** is an ADA compliant\* graspable hand rail that provides added safety and security to any stair or ramp. The key to its success is its simplicity; we've made the daunting task of installation easy with our step-by-step illustrated instructions and selection of versatile components. Vinyl-clad aluminum Hand Rail features complete metal-to-metal connections for maximum strength. Our vinyl-clad aluminum Hand Rail system can be joined in many different configurations to provide ADA compliant graspability on stairs or ramps.

*\*Always consult your local Building Code Department for applicable regulations and product acceptance.*



*Colors reproduced in print may vary from actual colors. Please see your dealer for physical color samples.*







**ALUMINUM ADA HAND RAIL** is the perfect solution for applications where durable, low-maintenance, graspable metal hand rail is desired. Strong, metal-to-metal connections ensure dependable safety and security for any stair or ramp that requires ADA code compliance.\*

*\*Always consult your local Building Code Department for applicable regulations and product acceptance.*



*Colors reproduced in print may vary from actual colors. Please see your dealer for physical color samples.*

# VINYL ADA HAND RAIL

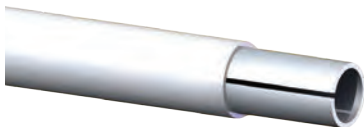
## SELECT YOUR COMPONENTS

Vinyl ADA Hand Rail is a secondary hand rail to be installed in addition to a primary railing installation.

1

### LINEALS

Vinyl ADA Hand Rail lineals come in lengths of 80", 104", and 120".



Vinyl Clad Aluminum Hand Rail



180° Return Loop

2

### MOUNTING BRACKETS

Select from a variety of mounting options for your installation. A mounting bracket is required every 6' of Hand Rail lineal. Hardware to attach mounting brackets to lineals is included; hardware to attach to posts is not included.



Mounting Bracket



Inside Corner Mounting Bracket



90° Post Return

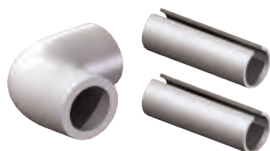


Straight Wall Return

3

### HAND RAIL JOINERS

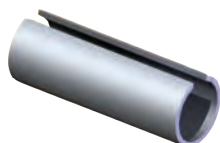
A variety of Hand Rail joiners help create the exact layout for your ADA hand rail that you need.



90° Corner



Adjustable Joiner



Straight Joiner

4

### HAND RAIL ACCESSORIES

Finish your project with joint ring to hide joins and end cap for a finished look on lineals.



Joint Ring



End Cap

# SKU LIST

## 1 VINYL ADA HAND RAIL – LINEALS

DESCRIPTION	WHITE	KHAKI
120" Vinyl Clad Aluminum Hand Rail	73018380	73018808
104" Vinyl Clad Aluminum Hand Rail	73018377	73018806
80" Vinyl Clad Aluminum Hand Rail	73018381	73018810
180° Return Loop	73018392	73018818

## 2 VINYL ADA HAND RAIL – MOUNTING BRACKETS

DESCRIPTION	WHITE	KHAKI
Mounting Bracket	73018384	73018812
Inside Corner Mounting Bracket	73018394	73018820
90° Post Return	73018398	73018824
Straight Wall Return	73018402	73018826

## 3 VINYL ADA HAND RAIL – JOINERS

DESCRIPTION	WHITE	KHAKI
90° Corner	73018386	73018814
Internal Adjustable Joiner (No color)	73018382	
Internal Straight Joiner (No color)	73018399	

## 4 VINYL ADA HAND RAIL – ACCESSORIES

DESCRIPTION	WHITE	KHAKI
Joint Ring	73018396	73018822
End Cap	73018390	73018816



- 1** 180° return loop returns the rail back past the post center line to meet ADA graspability requirements.
- 2** Our internal adjustable joiner allows you to create the angle you need from 0° to 90°.
- 3** Cast aluminum straight return terminates railing to any wall or post. Includes our unique snap-fit vinyl cover to conceal fasteners.

- 1** Internal joiners provide a continuous metal-to-metal connection for our Hand Rail lineals, and coupled with the joint ring, create a smooth, finished installation.
- 2** 90° post return creates a termination at any post or wall.
- 3** 90° corner creates a smooth corner where you need it, eliminating miter cuts.

*Hardware to attach mounting brackets to surface not included.*

# ALUMINUM ADA HAND RAIL

## SELECT YOUR COMPONENTS

Aluminum ADA Hand Rail is a secondary hand rail to be installed in addition to a primary railing installation.

### 1 LINEALS

Aluminum ADA Hand Rail lineals come in lengths of 80", 104", and 120".



Aluminum Hand Rail



180° Return Loop

### 2 MOUNTING BRACKETS

Select from a variety of mounting options for your installation. A mounting bracket is required every 6' of Hand Rail lineal. Hardware to attach mounting brackets to steel or aluminum posts included and hardware for vinyl posts included in brackets indicating use for vinyl posts.



Mounting Bracket



Mounting Bracket for Vinyl Posts



Inside Corner Mounting Bracket



90° Post Return



90° Post Return for Vinyl Posts



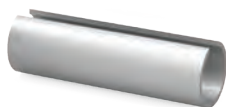
Straight Wall Return

### 3 HAND RAIL JOINERS

Aluminum Hand Rail offers our unique external joiner for adjustable angles without miter cuts. You can also use our Vinyl Hand Rail internal straight joiner with the Aluminum Hand Rail System.



Aluminum Hand Rail Adjustable Joiner



Straight Joiner



90° Corner

### 4 HAND RAIL ACCESSORIES

The matching finish of our end cap and joint ring adds a finished look to your hand rail. Spacer Block is perfectly sized to help block out mounting brackets.



End Cap



Joint Ring



Spacer Block

## 1 ALUMINUM ADA HAND RAIL – LINEALS

DESCRIPTION	WHITE	MATTE BLACK	HAMMERED BRONZE	MATTE BRONZE
1.5" x 80" Aluminum Lineal	73019171	73019169	73019170	73041311
1.5" x 104" Aluminum Lineal	73019175	73019173	73019174	73041309
1.5" x 120" Aluminum Lineal	73019179	73019177	73019178	73041310
180° Return Loop	73019227	73019229	N/A	73041325

## 2 ALUMINUM ADA HAND RAIL – MOUNTING BRACKETS

DESCRIPTION	WHITE	MATTE BLACK	HAMMERED BRONZE	MATTE BRONZE
Mounting Bracket	73019151	73019149	73019150	73041323
Mounting Bracket for Vinyl Posts	N/A	73042847	N/A	N/A
Inside Corner Mounting Bracket	73041318	73041317	N/A	73041315
90° Post Return	73019147	73019145	73019146	73041324
90° Post Return for Vinyl Posts	N/A	73042848	N/A	N/A
Straight Wall Return	73019155	73019153	73019154	73041326

## 3 ALUMINUM ADA HAND RAIL – JOINERS

DESCRIPTION	WHITE	MATTE BLACK	HAMMERED BRONZE	MATTE BRONZE
External Adjustable Joiner	73019167	73019165	73019166	73041314
Internal Straight Joiner (No color)	73018399			
90° Corner	73019163	73019161	73019162	73041312

## 4 ALUMINUM ADA HAND RAIL – ACCESSORIES

DESCRIPTION	WHITE	MATTE BLACK	HAMMERED BRONZE	MATTE BRONZE
End Cap	73019159	73019157	73019158	73041313
Joint Ring	73041322	73041321	N/A	73041319
Spacer Block*	73041469	73042849	N/A	73043094

*Spacer Block is 1/4" thick and used to help block out brackets for narrower, 2" Over-the-Top in-line Avalon posts installed between standard 2.5" Avalon posts.*



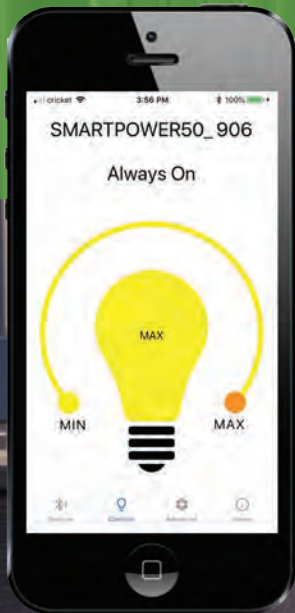
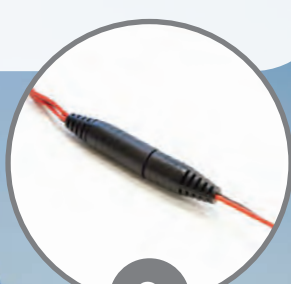
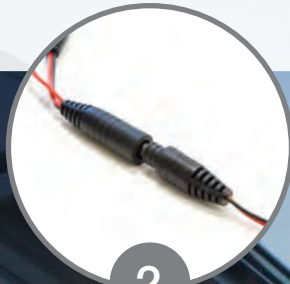
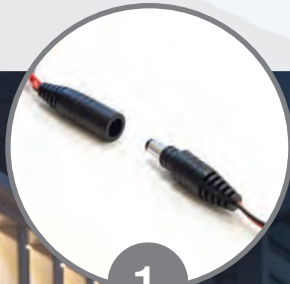
Spacer Block shown in Matte Black mounted behind mounting bracket.



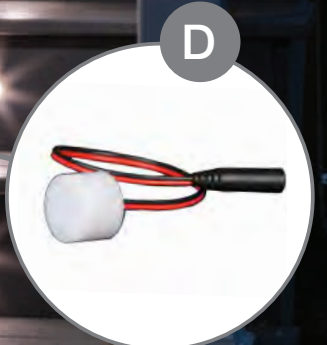
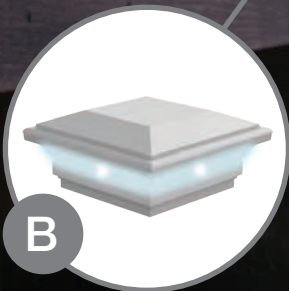
Inside Corner Mounting Bracket is sized perfectly for aluminum posts.

# LED LIGHTING

Easy plug-and-play installation!



Bluetooth capable transformer can be controlled with your smartphone!



Original Rail shown with Under-Rail Lighting (A), Contemporary LED Post Cap (B), LED Dome Lights, (C) and LED Flush-Deck Lights (D).

We've made adding lighting to your deck easy! With our plug-and-play LED lighting system, there's no need for cutting and splicing wires. All splitters and harnesses connect with our LED accessories easily. Under-rail light strips have an adhesive backing and come in lengths of 92". They can be adhered to the underside of your Transform or Avalon top rail. If using Finyl Line, Titan, or Original Rail, the LED under-rail light strip is inserted into the under-rail light channel which is then adhered to the top rail using provided adhesive backing. LED lighted post caps are offered exclusively color matched and to fit Transform posts, Avalon posts, and MetalWorks Excalibur posts. Additional LED accessories (post cap, dome light, side/stair light) in White can be used with Finyl Line, Titan Pro Rail, or Original Rail.



Under-Rail Lighting with Transform



Under-Rail Lighting with Avalon



Under-Rail Lighting + channel with Original Rail



Transform LED Post Caps – page 11



Avalon LED Post Caps – page 73

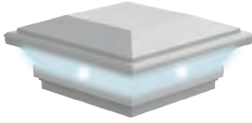
# LED LIGHTING

1

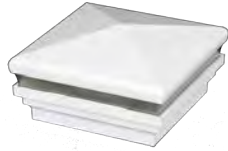
## CHOOSE YOUR LIGHTING ACCESSORIES

Add some ambiance with a selection of lighted accessories for vinyl, aluminum, and steel rail.

### VINYL LIGHTING ACCESSORIES



Contemporary Post Cap (Solar or LED)



New England LED Post Cap (0.80W)



Dome Light (0.80W)



Side/Stair Light (0.40W)

### ALUMINUM LIGHTING ACCESSORIES



3-in-1 LED Lighted Post Cap

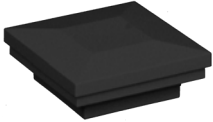


Solar Light Post Cap

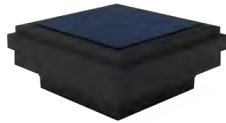


Solar Down Light Post Cap

### STEEL LIGHTING ACCESSORIES



LED Lighted Post Cap (2" or 3")



Solar Down Light Post Cap (2" or 3")

### ADDITIONAL LIGHTING ACCESSORIES



92" Under-Rail Light (3W)



Flush Deck Light (0.40W)

2

## CHOOSE THE TRANSFORMER AND WIRING COMPONENTS FOR YOUR ACCESSORIES

Select a transformer, wiring, and splitters for use with our lighted post caps. Or increase the "wow factor" of your deck at night with under-rail lighting. To determine the amount of power needed, simply add up the wattage of all your LED accessories and if less than 50W, then one transformer is needed. If more than 50W, a second transformer will be needed to power all LED accessories.



Transformer (50W) with Bluetooth capability



2-Way Splitter



Lighting wire – available in 2', 5', 7' or 9' lengths.



5-Way Splitter



Under-Rail Light Channel (92" length)



# SKU LIST

## 1 VINYL RAIL – LIGHTED ACCESSORIES

DESCRIPTION	WHITE	KHAKI	SAND
4" x 4" Contemporary Solar Post Cap	73019234	73045510	73045511
4" x 4" Contemporary LED Post Cap (0.80W)	73019377	73045506	73045507
5" x 5" New England LED Post Cap (0.80W) – WHITE	73043928	N/A	N/A
5" x 5" Contemporary Solar Post Cap – WHITE	73013110	N/A	N/A
Dome Light (0.80W)	73019404	73045508	73045509
Stair/Side Light (0.40W) – WHITE	73019411	N/A	N/A
92" Under Rail LED Lighting (3W for 92" length)	73019376		
Flush Deck Light (0.40W)	73019403		

## 1 ALUMINUM RAIL – LIGHTED ACCESSORIES

DESCRIPTION	WHITE	MATTE BLACK	MATTE BRONZE
2½" 3-in-1 LED Lighted Post Cap (1.6W)	73021946	73021947	73021948
2½" Solar Light Post Cap	73044955	73044954	73044941
2½" Solar Down Light Post Cap	73044936	73044935	73044953
92" Under Rail LED Lighting (3W for 92" length)	73019376		
Flush Deck Light (0.40W)	73019403		

## 1 STEEL RAIL – LIGHTED ACCESSORIES

DESCRIPTION	MATTE BLACK
2" LED Post Cap (0.80W)	73043000
3" LED Post Cap (0.80W)	73043001
2" Solar Down Light Post Cap	73044933
3" Solar Down Light Post Cap	73044934

## 2 LED LIGHTING – COMPONENTS

DESCRIPTION	SKU
Bluetooth Transformer for LED Lighting System	73041277
2-Way Splitter	73019370
5-Way Splitter	73019371
2' Electrical Lighting Wire	73032449
5' Electrical Lighting Wire	73019375
7' Electrical Lighting Wire	73019373
9' Electrical Lighting Wire	73019374
92" LED Light Channel (10 pack for use with Original Rail, Vinyl Line, & Titan Pro Rail) – WHITE	73024866

Transformer is 50W. Includes photocell, built-in dimmer, timer, and remote. Transformer is Bluetooth capable; "SmartPower50" app available from the App Store and Google Play.

# OUTDOOR ACCENTS

**OUTDOOR ACCENTS** provide options for under-deck screening as well as privacy screening on your porch. **Decorative Screen Panels** provide privacy when hung from your deck or porch, or installed with our Frame Kits. Available in a variety of colors and styles, Decorative Screen Panels can also be painted for complete customization. **Lattice** provides a traditional solution to under deck spaces with 3 patterns and 9 color options.





### FEATURES & BENEFITS

- Textured Decorative Screen Panels are made from glass-filled polypropylene and have low thermal expansion and contraction
- Decorative Screen Panels, when installed with our powder-coated aluminum Frame Kits, allow for a semi-privacy solution
- Plastic Lattice comes in larger sheets and will not rot, warp, or splinter



# ORDER OPTIONS

1

## CHOOSE DECORATIVE SCREEN PANEL FRAME KITS

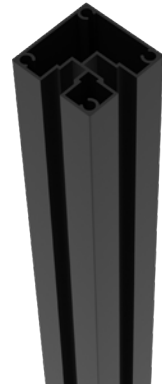
Decorative Screen Panel Frame Kits can hold 1-3 panels (sold separately) depending on your preference and are surface mounted. Powder coated aluminum frame assemblies quickly and easily to create your semi-privacy solution.



Frame Kit



Line Post Kit

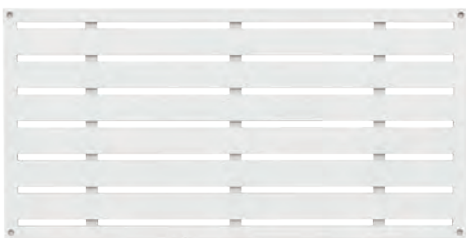


Corner Post Kit

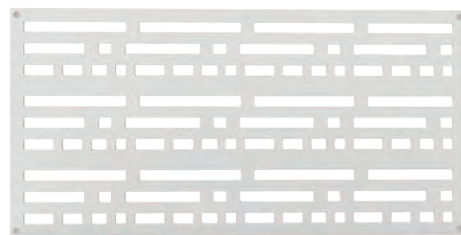
2

## CHOOSE DECORATIVE SCREEN PANELS

Decorative Screen Panels come in a variety of colors and designs. Install vertically or horizontally. Low thermal expansion and contraction, textured finish that's paintable, and 0.3" thick, Decorative Screen Panels are durable and unique.



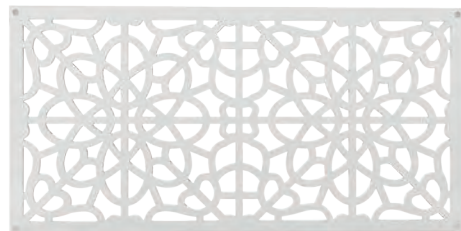
Boardwalk\*



Morse  
US Des. Pat. No. D843,607



Sprig  
US Des. Pat. No. D843,605



Fretwork  
US Des. Pat. No. D843,608

\*Our Boardwalk Decorative Screen Panel design features **LifeTexture™** – a 3D design with depth for added realism.

\*\*Brazilian Walnut only available in the Sprig style of Decorative Screen Panels.



White



Clay



Saddle



Brazilian Walnut\*\*



Black

Colors reproduced in print may vary from actual colors. Please see your dealer for physical color samples.

# OUTDOOR ACCENTS

3

## CHOOSE LATTICE ACCENTS

Lattice comes in a variety of colors and designs to accent and complement your outdoor living space!



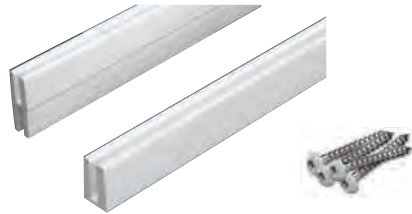
Classic Diamond



Privacy Diamond



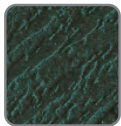
Privacy Square



Divider, Cap, Color Matched Screws



White



Woodland Green



Sierra Cedar



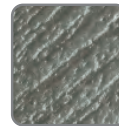
Redwood



Khaki



Brazilian Walnut



Nantucket Gray



Better Than Treated



Black

*Colors reproduced in print may vary from actual colors. Please see your dealer for physical color samples.*

# SKU LIST

## 1 OUTDOOR ACCENTS – DECORATIVE SCREEN PANEL FRAME KIT

DESCRIPTION	MATTE BLACK
Frame Kit – Can hold 1-3 Decorative Screen Panels (Sold separately)	<b>73040779</b>
Line Post Kit - To be used with Frame Kit (Sold separately) to Create a Continuous Section	<b>73045675</b>
Corner Post Kit - To be used with Frame Kit (Sold separately) to Create a Corner Section	<b>73045676</b>

*Decorative Screen Panel Frame Kit contains two 2" aluminum end posts, 2 top & bottom U-channels, 2 mid H-channels, surface mounting kit, post caps, and hardware.*

*Line & Corner Post Kits contain one 2" aluminum post (for either line or corner application), 2 top & bottom U-channels, 2 mid H-channels, surface mounting kit, post cap, and hardware.*

## 2 OUTDOOR ACCENTS – DECORATIVE SCREEN PANELS

DESCRIPTION	BOARDWALK*	MORSE	FRETWORK	SPRIG
4' x 2' x 0.3" – WHITE	<b>73042821</b>	<b>73004795</b>	<b>73004785</b>	<b>73004790</b>
4' x 2' x 0.3" – CLAY	<b>73042823</b>	<b>73004797</b>	<b>73004787</b>	<b>73004792</b>
4' x 2' x 0.3" – SADDLE	<b>73042824</b>	<b>73004798</b>	<b>73004788</b>	<b>73004793</b>
4' x 2' x 0.3" – BRAZILIAN WALNUT	<b>N/A</b>	<b>N/A</b>	<b>N/A</b>	<b>73004687</b>
4' x 2' x 0.3" – BLACK	<b>73042822</b>	<b>73004796</b>	<b>73004786</b>	<b>73004791</b>

*Decorative Screen Panels are designed with a matte, textured finish to allow them to be painted for complete customization.*

*\*Our Boardwalk Decorative Screen Panel design features LifeTexture™ – a 3D design with depth for added realism.*

## 3 OUTDOOR ACCENTS – DECORATIVE SCREEN PANEL HARDWARE

DESCRIPTION	SKU
Fastener Kit (12 stainless steel screws & 12 color matched screw covers) – WHITE	<b>73025526</b>
Fastener Kit (12 stainless steel screws & 12 color matched screw covers) – CLAY	<b>73025528</b>
Fastener Kit (12 stainless steel screws & 12 color matched screw covers) – SADDLE	<b>73025529</b>
Fastener Kit (12 stainless steel screws & 12 color matched screw covers) – BRAZILIAN WALNUT	<b>73004820</b>
Fastener Kit (12 stainless steel screws & 12 color matched screw covers) – BLACK	<b>73025527</b>

# OUTDOOR ACCENTS

## 3 OUTDOOR ACCENTS – LATTICE

COLOR	CLASSIC DIAMOND (2' x 8')	CLASSIC DIAMOND (4' x 8')	PRIVACY DIAMOND (4' x 8')	PRIVACY SQUARE (4' x 8')
White	73004010	73004026	73004042	73004051
Woodland Green	N/A	73004020	73004037	N/A
Sierra Cedar	N/A	73004021	73004038	N/A
Redwood	N/A	73004023	73004040	N/A
Khaki	N/A	73040661	73040664	N/A
Brazilian Walnut	N/A	73004144	73004142	N/A
Nantucket Gray	N/A	73004145	73004143	N/A
Better Than Treated	N/A	73004027	73004108	N/A
Black	N/A	73004497	73004479	N/A

Lattice comes in a variety of color options and is NOT intended to be painted.

## 3 OUTDOOR ACCENTS – LATTICE ACCESSORIES

COLOR	CAP MOLDING	DIVIDERS	1½" SS SCREWS (12)
White	73004058	73004066	73003464
Woodland Green	73004057	73004079	73003466
Sierra Cedar	73004059	73004067	73003467
Redwood	73004061	73004069	73003470
Khaki	73040670	73040671	73003474
Brazilian Walnut	73004140	73004138	73003999
Nantucket Gray	73004141	73004139	73013281
Better Than Treated	73004064	73004081	73003472
Black	73004496	73004477	73014290

# Barrette

OUTDOOR LIVING® 

[rdirail.com](http://rdirail.com)



**rdi**®

545 TILTON ROAD  
EGG HARBOR CITY, NJ 08215  
(877) 420-7245  
CS@RDIRAIL.COM

51012405 / REV 09.20