

Roundup
FOR LAWNS

**CRABGRASS
DESTROYER**

KILLS WEEDS NOT THE LAWN

KILLS EVEN THE TOUGHEST GRASSY WEEDS*

Keep Out Of Reach Of Children

Mantener Fuera Del Alcance De Los Niños

CAUTION See back label for additional
precautionary statements

PRECAUCIÓN Consulte los avisos de precaución
adicionales en la etiqueta posterior
FOR RESIDENTIAL USE

ACTIVE INGREDIENT:
Topramezone 0.18%
OTHER INGREDIENTS: 99.82%
Total 100.00%

NET CONTENTS / CONTENIDO NETO: 32 fl oz (1 qt) / 946mL

*As listed



STORAGE AND DISPOSAL

PESTICIDE STORAGE:	Store product in original container in a safe place. Protect from freezing.
PESTICIDE DISPOSAL AND CONTAINER HANDLING:	Nonrefillable container. Do not reuse or refill this container. If empty: Place in trash or offer for recycling if available. If partly filled: Call your local solid waste disposal agency for disposal instructions. Never place unused product down any indoor or outdoor drain.

PRECAUTIONARY STATEMENTS

HAZARDS TO HUMANS AND DOMESTIC ANIMALS

CAUTION: Causes moderate eye irritation. Avoid contact with eyes or clothing. Wash thoroughly with soap and water after handling and before eating, drinking, chewing gum, using tobacco or using the toilet. Remove and wash contaminated clothing before reuse. Keep away from children.

FIRST AID

IF IN EYES:	<ul style="list-style-type: none">• Hold eye open and rinse slowly and gently with water for 15 – 20 minutes.• Remove contact lenses, if present, after first 5 minutes, then continue rinsing eye.• Call a poison control center or doctor for treatment advice.
--------------------	---

Have the product container or label with you when calling a poison control center or doctor or going for treatment. You may also contact 1-866-572-0035 for emergency medical treatment information.

ENVIRONMENTAL HAZARDS

This product is toxic to plants. Drift and run-off may be hazardous to plants in water adjacent to treated areas. To protect the environment, do not allow pesticide to enter or run off into storm drains, drainage ditches, gutters or surface waters. Applying this product in calm weather when rain is not predicted for the next 24 hours will help to ensure that wind or rain does not blow pesticide off the treatment area. Rinsing application equipment over the treated area will help to avoid run off to water bodies or drainage systems.

GUARANTEE: If for any reason you are not satisfied after using this product, simply send us original proof of purchase and we will refund the purchase price.

NOTICE: To the extent consistent with applicable law, the buyer assumes all risks of use, storage or handling of this product not in accordance with label directions.

  **Questions & Comments** Preguntas y comentarios
Call 1-866-572-0035 or Visit our Website at www.roundup.com

EPA Reg. No. 239-2740-538
EPA Est. No. 239-1A-3¹
239-MS-001^M

Superscript is first letter of lot number.

Sold by: The Scotts Company
14111 Scottslawn Rd
Marysville, OH 43041
© 2018 The Scotts Company LLC.
World rights reserved.

LB11219

PRESS TO RESEAL. PRESIONE PARA VOLVER A CERRAR.

INSTRUCCIONES DE USO

Utilizar este producto de modo inconsistente con las declaraciones de su etiqueta constituye una violación de las leyes federales. Lea y siga las instrucciones de la etiqueta. Agitar bien antes de usarlo.

RESTRICCIONES

- NO entre ni permita que las personas o las mascotas ingresen al área tratada hasta que el rocío se haya secado.
- NO lo aplique en céspedes bahía, Bermuda, búfalo, alfombra, Bent estolonifera, dicandra, San Agustín (incluyendo la variedad floratum), chepica blanca o zoysia, ni a los tréboles (que no desee eliminar).
- NO aplique este producto de forma que entre en contacto con personas, ya sea directamente o al ser arrastrado por el viento, ni cuando la velocidad del viento pase de las 10 millas por hora (16 km/h).
- NO lo aplique más de 2 veces por año.
- NO aplique más de 6.4 onzas líquidas (189 ml) por cada 1,000 pies² (93 m²), por aplicación.
- NO aplique más de 12.8 onzas líquidas (379 ml) por cada 1,000 pies² (93 m²), por año.
- NO corte el césped 2 días antes ni 2 días después de la aplicación.
- NO riegue ni aplique este producto si se esperan lluvias hasta 24 horas después de la aplicación.
- NO aplique este producto sino hasta 28 días después de sembrar céspedes que puedan tolerarlo.
- NO lo aplique a malezas ni césped estresados por la sequía, las raíces absorbentes expuestas de árboles o plantas ornamentales ni dentro de la tubería de riego por goteo de éstos, en macizos ornamentales, ni en áreas propensas a los escurrimientos.
- NO lo aplique en las zonas del green o el antegreen de los campos de golf.
- NO utilice brizas de césped como mantillo alrededor de flores, plantas ornamentales, árboles ni en huertos de hortalizas.
- NO aplique un insecticida a base de organofosfato (tal como el malatión) o carbamato (como el carbaril) a menos de 1 semana de aplicar el Exterminador de zacate mano de cangrejo Roundup para céspedes listo para rociar, pues puede dañar el césped.

DATOS DEL PRODUCTO

El Exterminador de zacate mano de cangrejo Roundup para céspedes listo para rociar elimina las malezas ya existentes. El producto entra a las malezas a través de las hojas, las raíces y los retoños, y se desplaza hasta los puntos de crecimiento de las malezas de las que hace blanco. Este producto actúa deteniendo la producción de pigmento de la planta, haciendo que las malezas tratadas se tornen blancas y dejen de crecer. Las malezas afectadas se tornan de color marrón y son controladas.

DÓNDE USARLO

Aplique este producto a la hierba azul de Kentucky, la festuca rubra, el raigrás perenne y la festuca alta.

CÓMO USARLO

CONECTE

1. Conecte el rociador a la manguera.
2. Abra la llave del agua. Consejo para el usuario: Comience en el extremo más alejado y trabaje hacia atrás.

ROCÍE

1. Retire la tira del sello de garantía
2. Para EMPEZAR a rociar, deslice la palanca hasta la posición de ON (abierto).
3. Una botella de 32 onzas líquidas/1 cuarto de galón (946 ml) cubre 5,000 pies² (465 m²).
4. Rocíe únicamente hasta humedecer las malezas que se están tratando.

TERMINE

1. Para DEJAR de rociar, deslice la palanca hasta la posición de "OFF" (cerrado).
2. Cierre la llave del agua.
3. Libere la presión del agua deslizando la palanca hasta la posición de ON/WATER (abierto/agua).
4. Después de que el agua se reduzca a un goteo, deslice la palanca hasta la posición de "OFF" (cerrado).
5. Desconecte el rociador de la manguera.

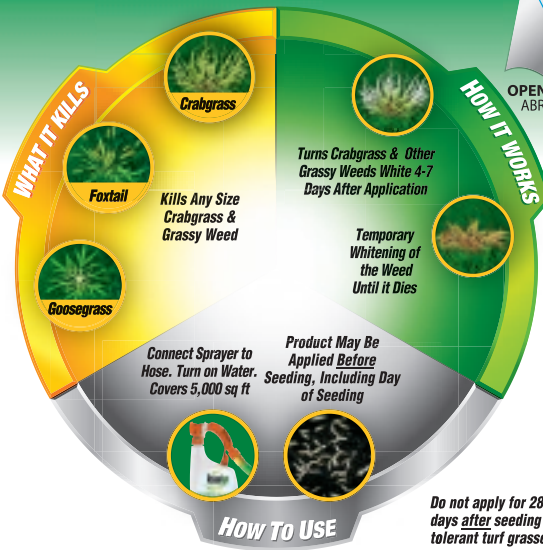
CUÁNDO USARLO

- Aplique este producto a las malezas en crecimiento activo (para obtener los mejores resultados, hágalo durante las primeras etapas de crecimiento).
- Aplíquelo cuando la temperatura diurna oscile entre los 60 y los 90 °F (16 y 32 °C).
- Este producto puede aplicarse antes de sembrar céspedes que puedan tolerarlo, hasta el día mismo de la siembra.

READY-TO-SPRAY

FOR USE ON NORTHERN LAWNS

FORMULATED TO KILL EVEN THE TOUGHEST GRASSY WEEDS*



OPEN ABRA

* As Listed

For best results in non-lawn areas like garden beds, patios and driveways, use Roundup® Weed & Grass Killer III



Questions & Comments

Preguntas y comentarios
Call 1-866-572-0035 or Visit our Website at www.roundup.com

EPA Reg. No. 239-2740-538

EPA Est. No. 239-IA-3¹

239-MS-001^{1M}

Superscript is first letter of lot number.

Sold by: The Scotts Company

14111 Scottslawn Rd

Marysville, OH 43041

© 2018 The Scotts Company LLC.

World rights reserved.

FPO

0 32247 43856 8
0605



LB11219

DIRECTIONS FOR USE

It is a violation of Federal law to use this product in a manner inconsistent with its labeling. Read and follow label instructions. Shake well before use.

RESTRICTIONS

- DO NOT enter or allow people or pets to enter the treated area until spray has dried.
- DO NOT apply to bahiagrass, bermudagrass, buffalograss, carpetgrass, clover (desirable), creeping bentgrass, dichondra, St. Augustinegrass (including Floratam), seashore paspalum or zoysiagrass.
- DO NOT apply this product in a way that will contact people either directly or through drift, or if winds speeds are greater than 10 mph.
- DO NOT apply more than 2X / year.
- DO NOT apply more than 6.4 fl oz per 1000 sq ft per application.
- DO NOT apply more than 12.8 fl oz per 1000 sq ft per year.
- DO NOT mow 2 days before to 2 days after applying.
- DO NOT irrigate or apply if rain is expected within 24 hours of applying.
- DO NOT apply for 28 days after seeding of tolerant turfgrasses.
- DO NOT apply to drought stressed lawns and/or drought stressed weeds, exposed feeder roots of trees or ornamentals, or within the dripline of trees and other ornamental plants, or within ornamental beds, or to areas where runoff into those areas is likely to occur.
- DO NOT apply to golf course collars or greens.
- DO NOT use dippings as mulch around flowers, ornamentals, trees or in vegetable gardens.
- DO NOT apply an OP (such as malathion) or carbamate insecticide (such as carabaryl) within 1 week of applying Roundup for Lawns Crabgrass Destroyer or lawn injury may result.

PRODUCT INFORMATION

Roundup for Lawns Crabgrass Destroyer kills existing weeds. The product enters weeds through leaves, roots and shoots and moves to the growing points of target weeds. This product works by stopping plant pigment production, causing treated weeds to turn white and stop growing. Affected weeds turn brown and are controlled.

WHERE TO USE

Apply this product to Kentucky bluegrass, fine fescue, perennial ryegrass and tall fescue.

HOW TO USE

CONNECT

1. Connect sprayer to hose.
 2. Turn on water.
- User Tip: Start at the farthest point and work back.

SPRAY

1. Remove tamper evident strip.
2. To BEGIN spraying, slide lever to on position.
3. One 32 fl oz bottle covers 5,000 sq ft.
4. Spray only until the weeds being treated are wet.

FINISH

1. To STOP spraying slide lever to "OFF".
2. Turn off water.
3. Relieve water pressure by sliding lever to ON/WATER.
4. After water slows to a drip, slide lever to "OFF".
5. Disconnect sprayer from hose.

WHEN TO USE

- Apply this product to actively-growing weeds (during the early growth stages for best results).
- Apply when daytime temperatures are between 45° and 90° F.
- This product may be applied before seeding of tolerant turfgrasses, including day of seeding.

KILLS WEEDS INCLUDING

Barnyardgrass	Crabgrass, large	Crabgrass, smooth
Crabgrass, southern	Cupgrass, wooly	Dallisgrass*
Foxtail, giant	Foxtail, green	Foxtail, yellow
Goosegrass	Johnsongrass, seedling	Millet, wild proso
Nimblewill*	Panicum, fall	Shattercane
Signalgrass, broadleaf	Stiltgrass, Japanese	

*Control requires a second application of this product after 3-4 weeks.

STORAGE AND DISPOSAL

PESTICIDE STORAGE:	Store product in original container in a safe place. Protect from freezing.
PESTICIDE DISPOSAL AND CONTAINER HANDLING:	Nonrefillable container. Do not reuse or refill this container. If empty: Place in trash or offer for recycling if available. If partly filled: Call your local solid waste disposal agency for disposal instructions. Never place unused product down any indoor or outdoor drain.

PRECAUTIONARY STATEMENTS

HAZARDS TO HUMANS AND DOMESTIC ANIMALS

CAUTION: Causes moderate eye irritation. Avoid contact with eyes or clothing. Wash thoroughly with soap and water after handling and before eating, drinking, chewing gum, using tobacco or using the toilet. Remove and wash contaminated clothing before reuse. Keep away from children.

FIRST AID

IF IN EYES:	<ul style="list-style-type: none">• Hold eye open and rinse slowly and gently with water for 15 - 20 minutes.• Remove contact lenses, if present, after first 5 minutes, then continue rinsing eye.• Call a poison control center or doctor for treatment advice.
Have the product container or label with you when calling a poison control center or doctor or going for treatment. You may also contact 1-866-572-0035 for emergency medical treatment information.	

ENVIRONMENTAL HAZARDS

This product is toxic to plants. Drift and run-off may be hazardous to plants in water adjacent to treated areas. To protect the environment, do not allow pesticide to enter or run off into storm drains, drainage ditches, gutters or surface waters. Applying this product in calm weather when rain is not predicted for the next 24 hours will help to ensure that wind or rain does not blow pesticide off the treatment area. Rinsing application equipment over the treated area will help to avoid run off to water bodies or drainage systems.

GUARANTEE: If for any reason you are not satisfied after using this product, simply send us original proof of purchase and we will refund the purchase price.

NOTICE: To the extent consistent with applicable law, the buyer assumes all risks of use, storage or handling of this product not in accordance with label directions.