



JM PRODUCT CATALOGUE

ALL FUEL CHIMNEY



FUEL



GAS



WOOD

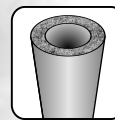


OIL

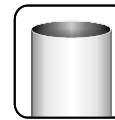


COAL

PRODUCT FEATURES



SOLID PACK INSULATED



STAINLESS STEEL (MIRROR FINISH)



EMBOSSED COUPLER TWIST-LOCK CONNECTION

www.supervent.com



A proud member and supporter of the following associations:



SuperVent JM Technical Data Sheet

CERTIFICATION & APPLICATIONS:

SuperVent 2100 JM chimney is intended for venting gas, liquid, or solid fuel fired residential type appliances and building heating appliances. It has been tested and approved to withstand temperatures of up to 2100°F (1150°C) for three minute intervals. Continuous operating temperatures should not exceed 1200°F (650°C).

CLEARANCE TO COMBUSTIBLE MATERIALS:

A 2" clearance to combustible materials must be maintained at all times, except in areas protected by factory supplied supports certified for reduced clearance.

SUPPORTS/FRAMING

All SuperVent Supports are designed to carry four times the combined weight of each system at maximum allowable height.

| Support and Framing Dimensions Table | | | | |
|--------------------------------------|--------------------|-------------------|-----------------------|--------------|
| | Ceiling Support | Wall Support | Cath. Ceiling Support | Roof Support |
| Support | 40' | 33' | 18' | 39' |
| Diameter | Framing Dimensions | | | |
| 6" Dia. | 14-3/8" x 14-3/8" | 14-3/8" x 14-3/8" | 14" x 14" | N/A |
| 7" Dia. | 14-3/8" x 14-3/8" | 14-3/8" x 14-3/8" | 15" x 15" | N/A |
| 8" Dia. | 14-3/8" x 14-3/8" | 14-3/8" x 14-3/8" | 16" x 16" | N/A |

CONSTRUCTION:

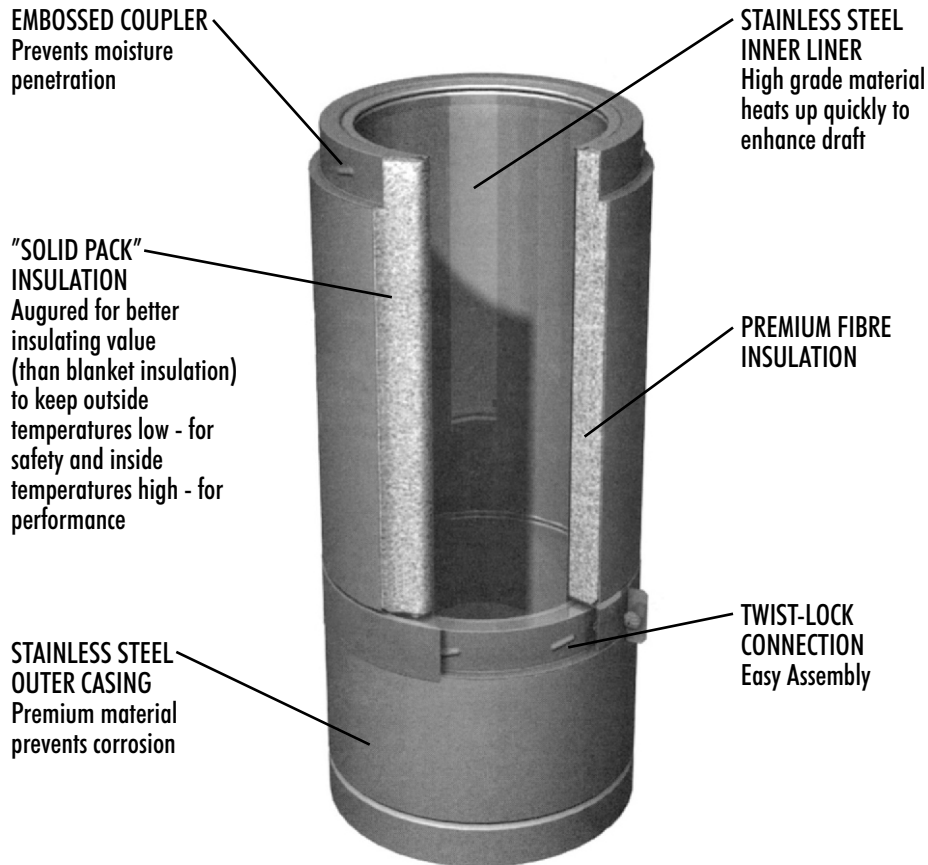
Inner Liner (Flue): 300 Series Stainless Steel.
0.016" thickness

Outer Casing: Type 430 Stainless Steel
0.015" thickness

Note: All SuperVent Twist-Lock Couplers are embossed (not lanced) and seams are weather-proofed to prevent moisture from entering the chimney.

Insulation:

The 2" space between inner/outer walls is Solid Packed with Mineral Wool Fibre insulation to provide superior insulating qualities, in a "slim-line" design. Solid Pack design performs favorably to Blanket type and Air-Cooled chimney designs.



The Best Warranty in the Industry

SuperVent features an advanced engineering design and premium quality material which allow us to offer a Lifetime Warranty on all component parts. See written warranty for details.

Support Kits

SuperVent has put together 3 chimney kits to get your project done . . .

SuperVent has taken the guess work out of chimney installation by putting the most common parts for each installation all in one box. These 3 kits depict the most common installations. Simply decide which of these scenarios fits your need, then pick up your chimney lengths, roof flashing and elbows (if required). (Kits available in 6" & 7" only.) For more information refer to Typical Installations on Page 12.

CEILING SUPPORT KIT

"My chimney runs straight up through the ceiling."

When your chimney goes up through a ceiling, then out the attic roof, you'll need this kit.

Included in the kit:

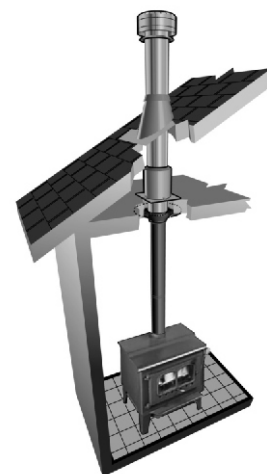
- Deluxe Rain Cap
- Attic Insulation Shield
- Decorator Ceiling Support
- Stove Pipe Adapter

. . . Now you just need your roof flashing and chimney lengths.

NOTE: For a two storey application, purchase the Ceiling Support Installation Kit and install an additional Attic Insulation Shield to provide proper fire stopping at the intermediate floor.



| SIZE | PRODUCT CODE |
|------|--------------|
| 6" | JSM6DCSP |
| 7" | JSM7DCSP |



Cathedral Ceiling Support Kit

"My chimney runs out the roof through a cathedral ceiling."

When your chimney goes out a cathedral or open beam ceiling, you will need this kit.

Included in kit:

- Deluxe Rain Cap
- Cathedral Ceiling Support
- Support Band
- Stove Pipe Adapter

. . . Now you just need your roof flashing and chimney lengths



| SIZE | PRODUCT CODE |
|------|--------------|
| 6" | JM6CCSK |
| 7" | JM7CCSK |



Wall Support Kit

"My chimney runs out the wall and then straight up."

When your chimney goes out a wall and then runs straight up, you'll need this kit.

Included in Kit:

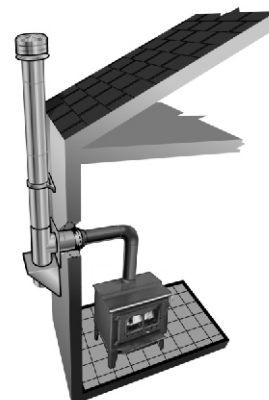
- Deluxe Rain Cap
- Wall Bands (2)
- Stove Pipe Adapter
- Wall Thimble
- Insulated Tee with Plug
- Adjustable Wall Support

. . . Now you just need:

- Vertical Chimney lengths
- Through the wall length (must extend at least 3" into the room)
- 12" chimney length or insulated tee plug (installed below the stainless steel tee)



| SIZE | PRODUCT CODE |
|------|--------------|
| 6" | JM6WSP |
| 7" | JM7WSP |

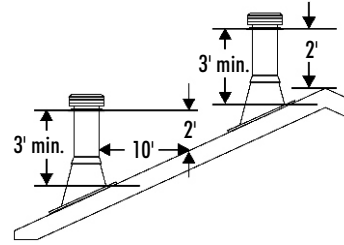


Note: When chimney must go through a soffit, add a roof flashing and finishing plate - refer to installation instructions for additional information.

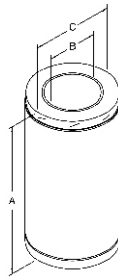
Stainless Steel Chimney Lengths

HEIGHT REQUIREMENTS

The chimney must extend at least three feet above the highest point where it passes through the roof surface and at least two feet higher than any part of the building within a horizontal distance of ten feet.



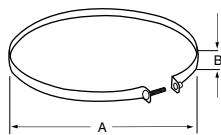
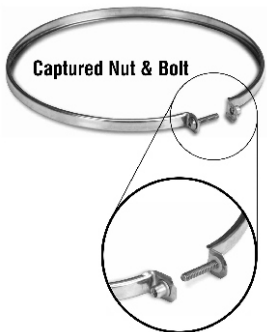
Chimney Lengths



- High temperatures ULC-S629 listed and tested to withstand temperatures of 2100°F.
- Secure twist-lock design couples chimney sections together with just a 1/8 turn.
- Sectional overlap of 1-1/8".

| Size | Dimensions | | | Product Code | Pack |
|----------|------------|----|-----|--------------|------|
| | A | B | C | | |
| 6" x 36" | 36" | 6" | 10" | JM6S36 | 1 |
| 6" x 24" | 24" | 6" | 10" | JM6S24 | 1 |
| 6" x 18" | 18" | 6" | 10" | JM6S18 | 1 |
| 6" x 12" | 12" | 6" | 10" | JM6S12 | 1 |
| 6" x 6" | 6" | 6" | 10" | JM6S6 | 2 |
| 7" x 36" | 36" | 7" | 11" | JM7S36 | 1 |
| 7" x 24" | 24" | 7" | 11" | JM7S24 | 1 |
| 7" x 18" | 18" | 7" | 11" | JM7S18 | 1 |
| 7" x 12" | 12" | 7" | 11" | JM7S12 | 1 |
| 7" x 6" | 6" | 7" | 11" | JM7S6 | 2 |
| 8" x 36" | 36" | 8" | 12" | JM8S36 | 1 |
| 8" x 24" | 24" | 8" | 12" | JM8S24 | 1 |
| 8" x 18" | 18" | 8" | 12" | JM8S18 | 1 |
| 8" x 12" | 12" | 8" | 12" | JM8S12 | 1 |
| 8" x 6" | 6" | 8" | 12" | JM8S6 | 2 |

LOCKING BAND

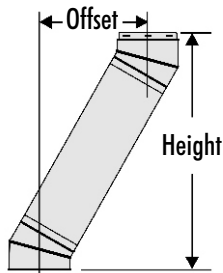


- Two flanges engage the grooves in each end of the adjoining sections holding them securely together.
- New design with convenient Captured Nut & Bolt.
- Locking Bands must be used:
 - on all sections that make up an offset.
 - on tee branch to attach a chimney length.
 - on any length suspended below the Cathedral or Roof Support.
- While Locking Bands are not required on other chimney lengths, their use is recommended for added safety and stability. It also provides a more attractive appearance.

| Size | Dimensions | | Product Code | Pack |
|------|------------|--------|--------------|------|
| | A | B | | |
| 6" | 10" | 1-3/8" | JM6SLB | 5 |
| 7" | 11" | 1-3/8" | JM7SLB | 5 |
| 8" | 10" | 1-3/8" | JM8SLB | 5 |

Stainless Steel Tees & Elbows

CHIMNEY OFFSET CHART



This chart has three columns for elbow angle required to achieve your desired offset. The first column under diameter ("A") is the horizontal measurement at the chimney center line, of the offset needed to get around an obstacle. The second column ("B") is the height of the assembled offset elbow to the top of the return elbow. Chimney Lengths Column shows the appropriate lengths required.

1. Determine the distance of the offset required.
2. On the chart, find the predetermined distance required for the 15° elbow under the

corresponding chimney diameter. For greater offset, use the 30° elbow chart.

3. After finding the offset, follow across the chart to find the specified height and appropriate chimney lengths required under their corresponding diameters.

All measurements in inches. Offset tolerances ± one inch.

| CHIMNEY OFFSET CHART | | | | | | | |
|----------------------|-----------------|-------------|----------|-------------|-----------|-------------|-----------|
| Elbow | Chimney Lengths | 6" Diameter | | 7" Diameter | | 8" Diameter | |
| | | A | B | A | B | A | B |
| 2 x 15° | none | 1-1/4" | 10-5/8" | 1-5/16" | 11" | 1-5/8" | 11-3/8" |
| 2 x 15° | 6" | 2-1/16" | 15-3/8" | 2-1/4" | 15-3/4" | 2-1/2" | 15-3/4" |
| 2 x 15° | 12" | 4-1/16" | 21-1/4" | 4-1/8" | 21-1/2" | 4-1/8" | 21-13/16" |
| 2 x 15° | 18" | 5-5/8" | 27-3/16" | 5-11/16" | 27-3/8" | 5-11/16" | 27-5/8" |
| 2 x 15° | 24" | 7-1/4" | 33" | 7-1/4" | 33-1/8" | 7-1/4" | 33-3/8" |
| 2 x 15° | 36" | 10-1/4" | 44-1/2" | 10-1/4" | 44-3/4" | 10-3/8" | 45-1/16" |
| 2 x 30° | none | 3-9/16" | 14-3/16" | 3-3/4" | 15-1/2" | 3-7/8" | 15-3/8" |
| 2 x 30° | 6" | 5-7/8" | 18-5/16" | 6-1/4" | 19-1/2" | 6-3/8" | 19-3/4" |
| 2 x 30° | 12" | 8-7/8" | 23-9/16" | 9-1/4" | 24-3/4" | 9-3/8" | 25" |
| 2 x 30° | 18" | 11-15/16" | 28" | 12-5/16" | 29-13/16" | 12-7/8" | 30-1/16" |
| 2 x 30° | 24" | 14-15/16" | 34-1/16" | 15-5/16" | 35-3/8" | 15-7/16" | 35-1/4" |
| 2 x 30° | 36" | 20-7/8" | 44-9/16" | 21-1/4" | 45-5/8" | 21-7/16" | 46-1/16" |

INSULATED 15° AND 30° ELBOW KITS

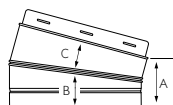
- The insulated elbow is used when offset is required.
- Locking Bands must be used on all elbows.
- A maximum of 6 feet is allowable between offsets.
- Elbow is fully insulated and can be used at the same 2" clearance chimney lengths.
- Elbow support must be used with all offset installations.
- Elbows do not have locking ridges and can be rotated to attain optimum positioning offset, and allow chimney to return to correct vertical alignment, prior to installing Locking Bands.

ELBOW KITS INCLUDE:

2 Elbows, 4 Locking Bands & 1 Elbow Support

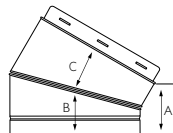


15° ELBOW KIT



| Size | Dimensions | | | Product Code | Pack |
|----------|------------|---------|---------|--------------|------|
| | A | B | C | | |
| 15° - 6" | 3-7/16" | 2-1/2" | 2" | JM6SEK | 1 |
| 15° - 7" | 3-7/16" | 2-9/16" | 2-1/16" | JM7SEK | 1 |
| 15° - 8" | 37/16" | 2-5/8" | 2-1/8" | JM8SEK | 1 |

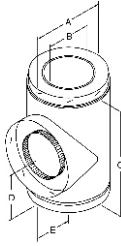
30° ELBOW KIT



| Size | Dimensions | | | Product Code | Pack |
|----------|------------|--------|--------|--------------|------|
| | A | B | C | | |
| 30° - 6" | 4-1/4" | 3-3/4" | 3-1/8" | JM6SE3K | 1 |
| 30° - 7" | 4-1/4" | 3-3/4" | 3-1/2" | JM7SE3K | 1 |
| 30° - 8" | 4-1/4" | 4-1/8" | 3 " | JM8SE3K | 1 |

Stainless Steel Tees & Elbows continued

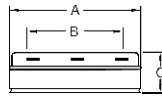
INSULATED TEE WITH PLUG



- The insulated tee is used for through the wall installations using a wall support.
- A chimney length is attached to the tee branch using a locking band to pass safely through a wall.
- Includes insulated tee plug.

| Size | Dimensions | | | | | Product Code | Pack |
|------|------------|----|---------|--------|--------|--------------|------|
| | A | B | C | D | E | | |
| 6" | 10" | 6" | 13-1/4" | 6-1/2" | 6-1/2" | JSC6SIT | 1 |
| 7" | 11" | 7" | 14-1/4" | 7" | 7" | JSC7SIT | 1 |
| 8" | 12" | 8" | 15-1/4" | 8-1/2" | 7-1/2" | JSC8SIT | 1 |

TEE PLUG INSULATED

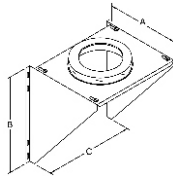


- Twist locks into bottom of Wall Support.
- Removable to provide easy access for chimney maintenance and inspection.
- Insulated to help maintain flue gas temperature.

| Size | Dimensions | | | Product Code | Pack |
|------|------------|----|--------|--------------|------|
| | A | B | C | | |
| 6" | 10" | 6" | 2-3/4" | J62TPI | 1 |
| 7" | 11" | 7" | 2-3/4" | J72TPI | 1 |
| 8" | 12" | 8" | 2-3/4" | J82TPI | 1 |

Supports

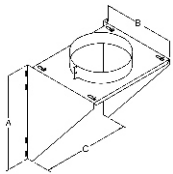
ADJUSTABLE WALL SUPPORT



- Used to support the chimney on a wall installation.
- Will support up to 33 feet of chimney.

| Size | Dimensions | | | Product Code | Pack |
|------|------------|-----|-----|--------------|------|
| | A | B | C | | |
| 6" | 17-1/8" | 13" | 16" | JM6AWS | 1 |
| 7" | 17-1/8" | 14" | 16" | JM7AWS | 1 |
| 8" | 17-1/8" | 15" | 16" | JM8AWS | 1 |

ADJUSTABLE INTERMEDIATE WALL SUPPORT

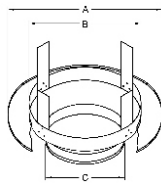


- Supplementary support used when height exceeds maximum height allowed by wall support.
- Will support 33 feet of chimney.

| Size | Dimensions | | | Product Code | Pack |
|------|------------|-----|-----|--------------|------|
| | A | B | C | | |
| 6" | 17-1/8" | 13" | 16" | JM6AIWS | 1 |
| 7" | 17-1/8" | 14" | 16" | JM7AIWS | 1 |
| 8" | 17-1/8" | 15" | 16" | JM8AIWS | 1 |

Supports continued

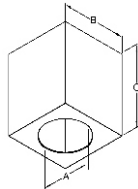
DECORATOR CEILING SUPPORT



- For use in ceiling support installations.
- Supports up to 40 feet of chimney.

| Size | Dimensions | | | Product Code | Pack |
|------|------------|---------|---------|--------------|------|
| | A | B | C | | |
| 6" | 10" | 14-3/8" | 19-7/8" | JM6DCS-1 | 1 |
| 7" | 11" | 14-3/8" | 19-7/8" | JM7DCS-1 | 1 |
| 8" | 12" | 14-3/8" | 19-7/8" | JM8DCS-1 | 1 |

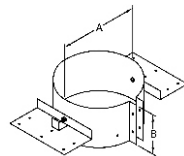
CATHEDRAL CEILING SUPPORT BOX



- Includes Black Ceiling Trim.
- Used in pitched ceiling support installations.
- Supports up to 18 feet of chimney.

| Size | Dimensions | | | Product Code | Pack |
|------|------------|-----|-----|--------------|------|
| | A | B | C | | |
| 6" | 10-3/16" | 14" | 17" | JM6CCSB | 1 |
| 7" | 11-3/16" | 15" | 17" | JM7CCSB | 1 |
| 8" | 12-3/16" | 16" | 17" | JM8CCSB | 1 |

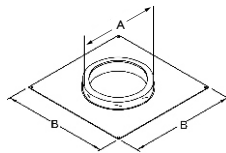
ROOF SUPPORT



- Supplementary support used when maximum height exceeds that of the primary support.
- Supports up to 39 feet of chimney.

| Size | Dimensions | | Product Code | Pack |
|------|------------|----|--------------|------|
| | A | B | | |
| 6" | 19" | 5" | JM6RS | 1 |
| 7" | 11" | 5" | JM7RS | 1 |
| 8" | 12" | 5" | JM8RS | 1 |

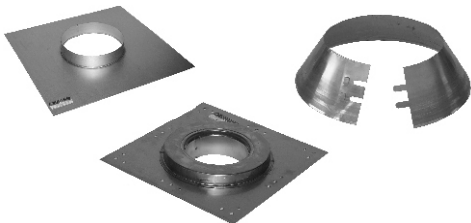
ADAPTER PLATE



- The adapter plate is used to adapt the chimney to zero clearance fireplaces.

| Size | Dimensions | | Product Code | Pack |
|------|------------|---------|--------------|------|
| | A | B | | |
| 6" | 6" | 11-5/8" | JM6AP | 1 |
| 7" | 7" | 11-5/8" | JM7AP | 1 |
| 8" | 8" | 11-5/8" | JM8AP | 1 |

MASONRY ADAPTER PLATE KIT

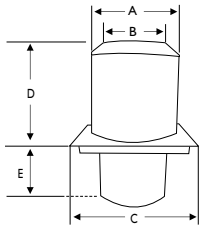
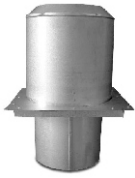


- Used to replace part of an existing masonry chimney.
- Kit includes adapter plate, masonry flashing and storm collar.

| Size | Product Code | Pack |
|------|--------------|------|
| 6" | JM6MAK | 1 |
| 7" | JM7MAK | 1 |
| 8" | JM8MAK | 1 |

Shields

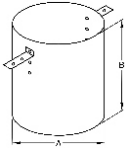
ATTIC INSULATION SHIELD



- Must be installed where the chimney passes from a lower living space into an upper living space or attic space.
- Also used as a second shield at intermediate floor in two story system.

| Size | Dimensions | | | | | Product Code | Pack |
|------|------------|-----|-----|-----------|--------|--------------|------|
| | A | B | C | D | E | | |
| 6" | 12" | 8" | 14" | 11-13/16" | 8-1/2" | JM6AIS | 1 |
| 7" | 13" | 9" | 15" | 11-13/16" | 8-1/2" | JM7AIS | 1 |
| 8" | 14" | 10" | 16" | 11-13/16" | 8-1/2" | JM8AIS | 1 |

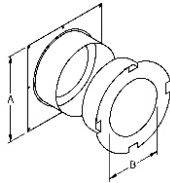
RAFTER RADIATION SHIELD



- Must be installed where the chimney is enclosed immediately below the roof line.

| Size | Dimensions | | Product Code | Pack |
|------|------------|-----|--------------|------|
| | A | B | | |
| 6" | 12" | 12" | JM6RRS | 1 |
| 7" | 13" | 12" | JM7RRS | 1 |
| 8" | 14" | 12" | JM8RRS | 1 |

WALL THIMBLE

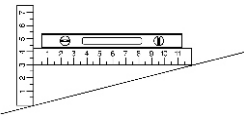


- Used in a wall support installation.
- Maintains 2" air space clearance.
- Prevents insulation and other building materials from contacting the horizontal chimney length.

| Size | Dimensions | | Product Code | Pack |
|------|------------|-----|--------------|------|
| | A | B | | |
| 6" | 10-1/8" | 17" | JM6WT | 1 |
| 7" | 11-1/8" | 17" | JM7WT | 1 |
| 8" | 12-1/8" | 17" | JM8WT | 1 |

Flashings and Storm Collars

ROOF FLASHING SELECTION CHART



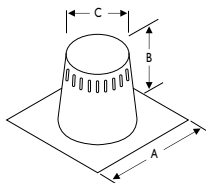
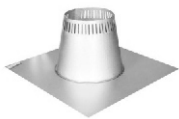
In this example, the pitch is 3/12.
 0/12 - 6/12 Roof Pitch = JM*AAF
 6/12 - 12/12 Roof Pitch = JM*AF2

To determine what roof flashing you'll require, you must work out the pitch of your roof. To determine the pitch, you'll need two rulers and a level. Measure the number of inches from the end of the ruler down to the roof.

All Roof Flashings:

- Come complete with storm collar.
- Seams are sealed with silicone.
- Galvalume construction.

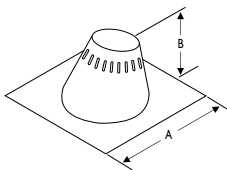
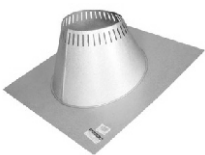
TALL CONE FLASHING - FLAT to 1/12



- For flat roofs.

| Size | Dimensions | | | Product Code | Pack |
|------|------------|-----|-----|--------------|------|
| | A | B | C | | |
| 6" | 24" | 12" | 10" | JM6ATC | 1 |
| 7" | 24" | 12" | 11" | JM7ATC | 1 |
| 8" | 27-1/2" | 12" | 12" | JM8ATC | 1 |

ROOF FLASHING - FLAT to 6/12

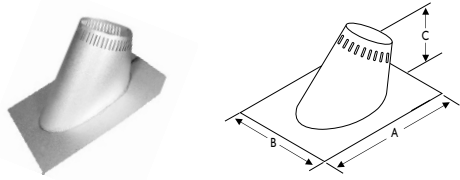


- For a low sloped roof with a pitch of 0/12 to 6/12.

| Size | Dimensions | | Product Code | Pack |
|------|------------|----|--------------|------|
| | A | B | | |
| 6" | 27-1/2" | 9" | JM6AAF | 1 |
| 7" | 27-1/2" | 9" | JM7AAF | 1 |
| 8" | 27-1/2" | 9" | JM8AAF | 1 |
| 6" | 27-1/2" | 9" | JM6AAF-3 | 3 |
| 7" | 27-1/2" | 9" | JM7AAF-3 | 3 |
| 8" | 27-1/2" | 9" | JM8AAF-3 | 3 |

Flashings and Storm Collars continued

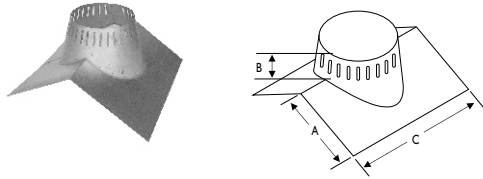
ADJUSTABLE FLASHING - 6/12 to 12/12



- For a steep sloped roof with a pitch of 6/12 to 12/12.

| Size | Dimensions | | | Product Code | Pack |
|------|------------|---------|--------|--------------|------|
| | A | B | C | | |
| 6" | 30" | 21-1/2" | 9-3/8" | JM6AF2 | 1 |
| 7" | 30" | 21-1/2" | 9-3/8" | JM7AF2 | 1 |
| 8" | 30" | 21-1/2" | 9-3/8" | JM8AF2 | 1 |
| 6" | 30" | 21-1/2" | 9-3/8" | JM6AF2-3 | 3 |
| 7" | 30" | 21-1/2" | 9-3/8" | JM7AF2-3 | 3 |
| 8" | 30" | 21-1/2" | 9-3/8" | JM8AF2-3 | 3 |

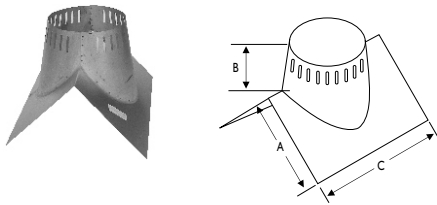
PEAK FLASHING - 3/12 to 6/12



- For a peaked roof with a pitch of 3/12 to 6/12.

| Size | Dimensions | | | Product Code | Pack |
|------|------------|-----|---------|--------------|------|
| | A | B | C | | |
| 6" | 22-1/2" | 10" | 12-1/2" | JM6P1 | 1 |
| 7" | 22-1/2" | 10" | 12-1/2" | JM7P1 | 1 |
| 8" | 22-1/2" | 10" | 12-1/2" | JM8P1 | 1 |

PEAK FLASHING - 6/12 to 9/12



- Used in conjunction with roof flashing to keep precipitation out.

| Size | Dimensions | | | Product Code | Pack |
|------|------------|---------|-----|--------------|------|
| | A | B | C | | |
| 6" | 14" | 12-1/2" | 24" | JM6P2 | 1 |
| 7" | 15" | 13" | 24" | JM7P2 | 1 |
| 8" | 15-5/8" | 14" | 24" | JM8P2 | 1 |

RUBBER BOOT FLASHING KIT

THIS KIT INCLUDES:

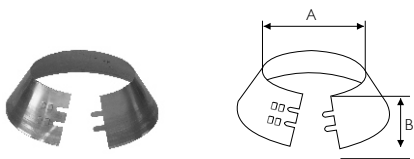
- Special Storm Collar
- Rubber Boot
- Spacer Kit
- Special Boot Mounting Screws



- This kit fits 5", 6", 7" and 8" Chimneys
- Required where the chimney passes through a corrugated roof.
- Rubber Boot Flashing fits roof pitches up to 12/12" (10/12 for 8").

| Size | Product Code | Pack |
|------|--------------|------|
| ALL | JURBFK2 | 1 |

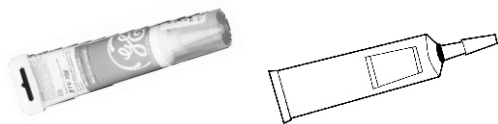
STORM COLLAR



- Used in conjunction with roof flashing to keep precipitation out.

| Size | Dimensions | | Product Code | Pack |
|------|------------|--------|--------------|------|
| | A | B | | |
| 6" | 10" | 4-1/2" | JM6ASC-1 | 1 |
| 7" | 11" | 4-1/2" | JM7ASC-1 | 1 |
| 8" | 12" | 4-1/2" | JM8ASC-1 | 1 |

SILICONE SEALANT FOR STORM COLLAR

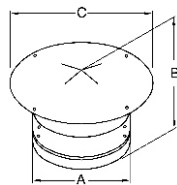


- Used to seal storm collar to chimney length above cone of flashing.
- 3 ounce tube.

| Size | Dimensions | Product Code | Pack |
|------|------------|--------------|------|
| | | JRTV | 1 |

Rain Caps

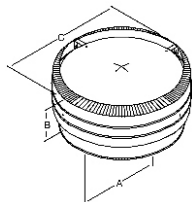
STANDARD RAIN CAP



- Designed to allow free flow of air and used in conjunction with spark arrestor (included) to prevent access to flue by foreign objects.

| Size | Dimensions | | | Product Code | Pack |
|------|------------|--------|---------|--------------|------|
| | A | B | C | | |
| 6" | 8" | 7-1/2" | 12-1/4" | JM6RC | 1 |
| 7" | 9" | 7-1/2" | 13-1/4" | JM7RC | 1 |
| 8" | 10" | 7-1/2" | 14-1/4" | JM8RC | 1 |

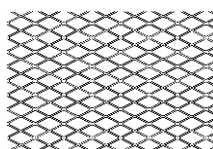
DELUXE RAIN CAP



- Advanced design.
- Provides protection against precipitation and creates a venturi effect to enhance draught.
- Twist-lock connection for secure installation.

| Size | Dimensions | | | Product Code | Pack |
|------|------------|--------|---------|--------------|------|
| | A | B | C | | |
| 6" | 10" | 7-1/2" | 13-1/4" | JM6DRC | 1 |
| 7" | 11" | 7-1/2" | 14-1/4" | JM7DRC | 1 |
| 8" | 12" | 7-1/2" | 17-1/4" | JM8DRC | 1 |

SPARK ARRESTOR

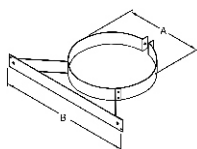


- Stainless steel mesh wire fits inside Standard Rain Cap (JM*RC)

| Size | Dimensions | | Product Code | Pack |
|------|------------|-----|--------------|------|
| | A | B | | |
| 6" | 4-1/2" | 26" | JSC6SPAR | 10 |
| 7" | 4-1/2" | 29" | JSC7SPAR | 10 |
| 8" | 4-1/2" | 32" | JSC8SPAR | 10 |

Parts and Accessories

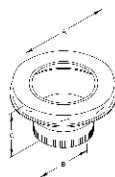
WALL BAND



- To provides lateral support to a chimney when installed adjacent to a wall. Used every 8 feet.

| Size | Dimensions | | Product Code | Pack |
|------|------------|-----|--------------|------|
| | A | B | | |
| 6" | 10" | 17" | JM6WB | 5 |
| 7" | 11" | 17" | JM7WB | 5 |
| 8" | 12" | 17" | JM8WB | 5 |

STOVE PIPE ADAPTER

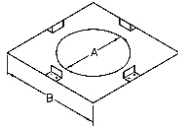
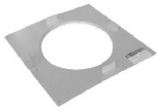


- For a quick and easy transition from black stove pipe or Double Wall black stove pipe to SuperVent chimney.
- Twist-lock connection.
- Matte black finish.

| Size | Dimensions | | | Product Code | Pack |
|------|------------|----|--------|--------------|------|
| | A | B | C | | |
| 6" | 10" | 6" | 5-5/8" | JM6ASE | 1 |
| 7" | 11" | 7" | 5-5/8" | JM7ASE | 1 |
| 8" | 12" | 8" | 5-5/8" | JM8ASE | 1 |

Parts and Accessories continued

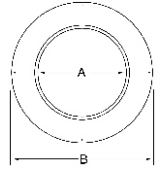
FINISHING PLATE



- Used where the chimney passes through a soffit to provide a finished appearance from below. Refer to installation instructions for additional information.

| Size | Dimensions | | Product Code | Pack |
|------|------------|-----|--------------|------|
| | A | B | | |
| 6" | 10" | 16" | JM6FP | 1 |
| 7" | 11" | 17" | JM7FP | 1 |
| 8" | 12" | 18" | JM8FP | 1 |

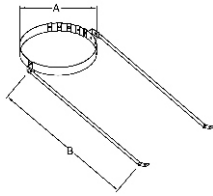
BLACK TRIM COLLAR



- Used on wall support installations when passing through a non-combustible wall.
- Matte black finish.

| Size | Dimensions | | Product Code | Pack |
|------|------------|-----|--------------|------|
| | A | B | | |
| 6" | 8" | 16" | JM6TC | 10 |
| 7" | 9" | 16" | JM7TC | 10 |
| 8" | 10" | 16" | JM8TC | 10 |

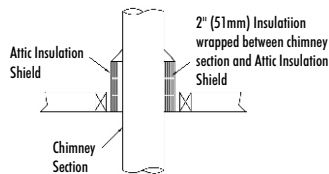
UNIVERSAL ROOF GUY KIT



- If chimney extends more than 5 feet above the roof, a roof guy kit is required.

| Dimensions | | Product Code | Pack |
|------------|----------|--------------|------|
| A | B | | |
| 6 - 12" | 60" 120" | JURGK-1 | 1 |

JUSI-UNIVERSAL SHIELDING INSULATION



- Optional insulation for use with:
 - Attic Insulation Shield (JM*AIS)
 - Wall Thimble (JM*WT)
 - Cathedral Ceiling Support (JM*CCS)
- Protects building materials against radiant heat from the chimney.
- Helps maintain temperatures within the chimney system and helps stop air infiltration into the dwelling.

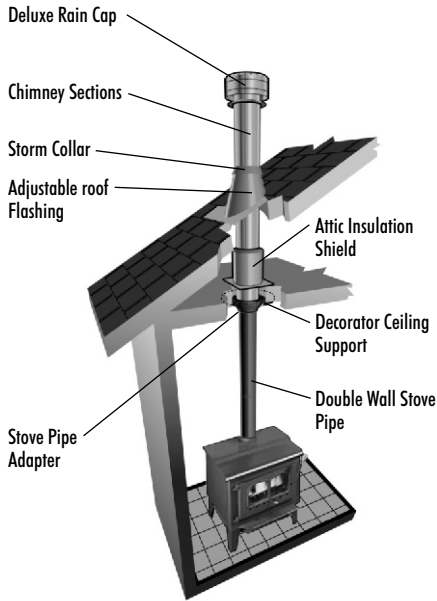
| Dimensions | Product Code | Pack |
|------------|--------------|------|
| Universal | JUSI | 1 |

Typical Installations

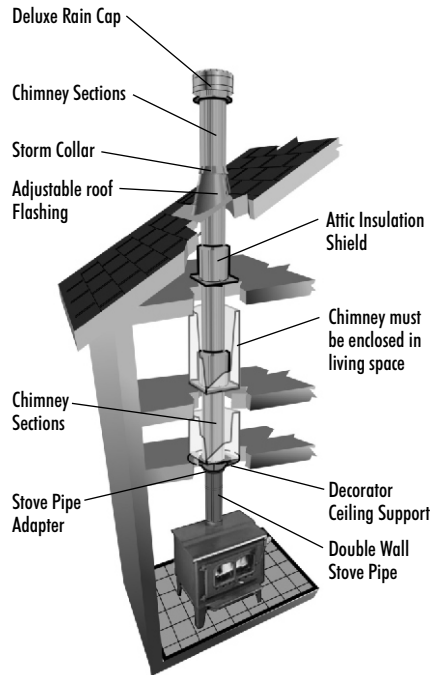


DECORATOR CEILING SUPPORT INSTALLATIONS

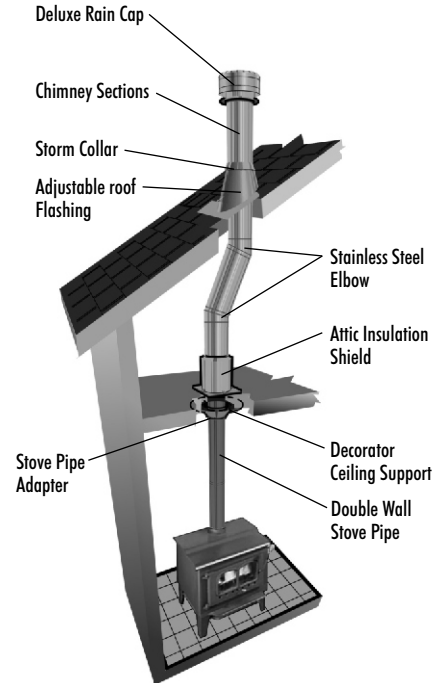
One Storey



Two Storey

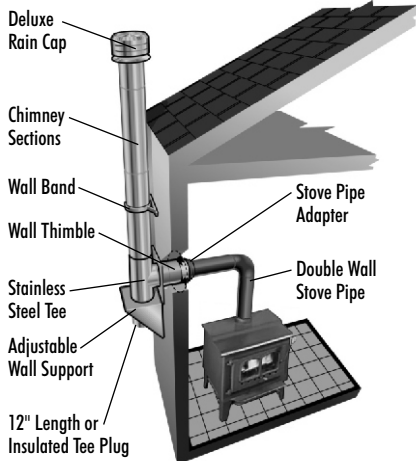


Elbow Installation

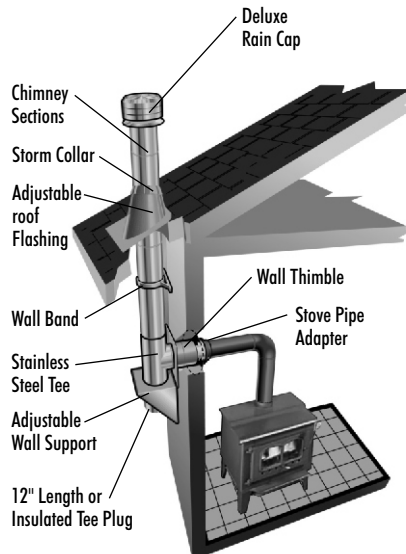


WALL SUPPORT INSTALLATIONS

One Storey

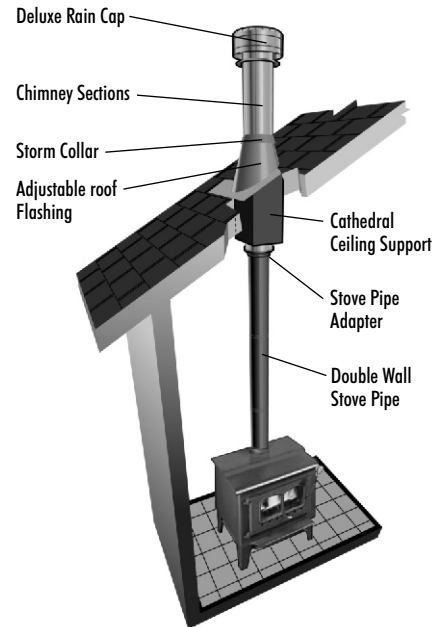


Through a soffit



CATHEDRAL SUPPORT INSTALLATION

With Cathedral Ceiling Support Box



For Wood Fireplace Installations, consult the Installation Instructions supplied with each Fireplace unit. Installations may vary, please consult the Installation Instructions available at www.supervent.com

JM002-E R&B 3671 01-15

Selkirk Canada Corporation
375 Green Road
Stoney Creek, ON L8E 4A5
Toll Free: 1.888.SELKIRK (735-5475)
info@selkirkcanada.com

www.selkirkcorp.com

Selkirk Corporation
5030 Corporate Exchange Blvd. SE
Grand Rapids, MI 49512
Toll Free: 1.800.433.6341
info@selkirkcorp.com

