

Energy Division

## AA Series Photocontrol Button Style

Tyco Electronics' AA Series offers a unique button style design for internal post fixtures or mounting applications.

### Features

- 3/4" Long Threaded Nipple
- 30-45 Second Time Delay
- UL and CSA Listed
- Durable Polycarbonate Housing
- 1800 and 1200 Watt Load Rating
- Fail Mode is ON

### Innovative Design

Tyco Electronics innovative design with the wire leads exiting from the rear allow the control to be placed in tight locations while positioning the wiring for easy access.

### Durable Housing

The AA Series photocontrol is constructed of a high impact UV stabilized polycarbonate housing for superior quality.

### Available Options

The 105W and 1068W controls include a brushed aluminum wall plate for installation in standard outlet boxes.

The 105M and 1068M are equipped with a 180 Joule Metal Oxide Varistor (MOV) and are designed to protect luminaries where transient voltage surges are a frequent and recurring problem.

The 105HA is a high ambient temperature photocontrol, designed specifically to last longer in today's hotter running HID luminaries. This unit incorporates insulation and heat sink to absorb the heat generated by the lamp and other components, significantly adding to the controls useful life.

### Common Uses for the AA Series

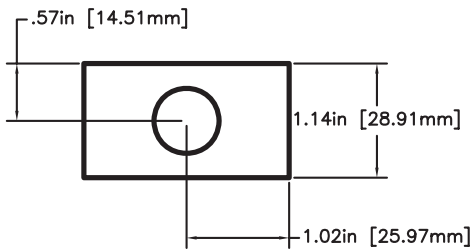
- Decorative Light Fixtures
- Post Lanterns
- Commercial and Residential Use
- Wall Mount Application

*Tyco Electronics' photocontrols can be used to safely control luminaries with incandescent, HID, or compact fluorescent lamps.*

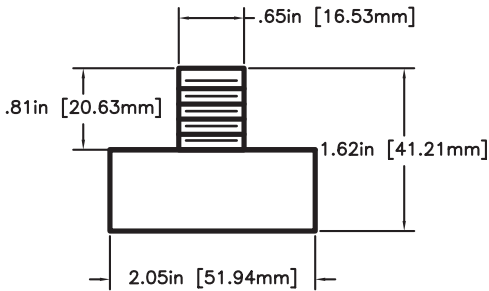
 **Tyco Electronics**

Our commitment. Your advantage.

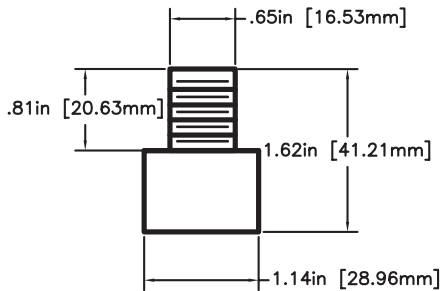
### Top View



### Side View



### R. Side View



The AA Series is the result of over fifty years of experience designing and delivering superior photocontrols and other lighting accessories in the US and around the world.

#### Features

Switch	SPST thermal bi-metallic
Fail Mode	ON (contacts normally closed)
Switch Lifetime	Exceeds 5,000 ON/OFF operations
Housing	Polycarbonate with UV resistant window
Lead Wires	6", #18 AWG, rated 105°C (AA controls) 15", #18 AWG, rated 105°C (AA-M controls) 6", #18 AWG, rated 125°C (AA-HA controls)
Nipple	3/8" pipe
Nut	3/8" pipe, thermoplastic
Light Sensor	1/2" Cadmium sulfide (Cds) cell

#### Specifications

Physical	- Dimensions: approx. 2.05" [51.94mm] dia. x 1.62" [41.21mm] high (Not including wiring) - Enclosure: designed to meet ANSI C136.10 - Power consumption: less than 0.9 watts at 120 VAC
Temperature Control	- Minus 40°C to plus 65°C @ 96% RH
Load Rating	- Thermal State Switch Type - 1800 Watt Tungsten 1100 VA
Light Sensor	- Cadmium Sulfide Cell

#### Selection information

Model	Product Information	Rated Volts	Range (Volts)	Load Rating Tungsten (Watts)	Load Rating Ballast (VA)	Surge Protection (Joules)	Turn ON (Fc)	OFF/ON Ratio
AA-105		120	105 - 130	1800	1100		1.5	5 : 1
<b>CPGI-ALR-AA-105</b>		<b>120</b>	<b>105 - 130</b>	<b>1800</b>	<b>1100</b>		<b>1.5</b>	<b>5 : 1</b>
AA-105W	w/Wall Plate	120	105 - 130	1800	1100		1.5	5 : 1
<b>CPGI-ALR-AA-105W</b>	<b>w/Wall Plate</b>	<b>120</b>	<b>105 - 130</b>	<b>1800</b>	<b>1100</b>		<b>1.5</b>	<b>5 : 1</b>
AA-1068		240	185 - 305	1200	1100		1.5	5 : 1
AA-1068W	w/Wall Plate	240	185 - 305	1200	1100		1.5	5 : 1
AA-305		120	105 - 130	300	840		1.5	5 : 1
<b>CPGI-ALR-AA-305</b>		<b>120</b>	<b>105 - 130</b>	<b>300</b>	<b>840</b>		<b>1.5</b>	<b>5 : 1</b>
AA-105M	15" Leads	120	105 - 130	1800	1100	180	1.5	5 : 1
AA-1068M	15" Leads	240	185 - 305	1200	1100	180	1.5	5 : 1
AA-105HA	High Ambient	120	105 - 130	1800	1100		1.5	5 : 1

Note: 6" lead wires unless otherwise noted

Tyco Electronics Corporation  
8000 Purfoy Road  
Fuquay Varina, NC 27526-9349  
Tel: 800.327.6996  
Fax: 800.527.8350  
E-mail: naenergy@tycoelectronics.com  
<http://energy.tycoelectronics.com/photocontrols>  
[www.tycoelectronics.com](http://www.tycoelectronics.com)

© 2008 Tyco Electronics Corporation.  
All rights reserved.  
7-1773453-6 E328 11/08

All of the above information, including drawings, illustrations and graphic designs, reflects our present understanding and is to the best of our knowledge and belief correct and reliable. Users, however, should independently evaluate the suitability of each product for the desired application. Under no circumstances does this constitute an assurance of any particular quality or performance. Such an assurance is only provided in the context of our product specifications or explicit contractual arrangements. Our liability for these products is set forth in our standard terms and conditions of sale. TE logo and Tyco Electronics are trademarks

**Energy Division – A pioneer in the development of economical solutions for the electrical power industry. Our product range includes: cable accessories, connectors & fittings, electrical equipment, instruments, lighting controls, insulators & insulation enhancement and surge arresters.**

Mike O'Toole  
Tyco Electronics, Energy Inside Sales

ALR = Area Lighting Research. The name of the company who made these parts before Tyco purchased them. We keep the ALR as part of the part #'ing for brand recognition.

CPGI prefix designates a clam shell, see-thru package designed to hang on a rod in a retail environment. It also has a std pack qty of 10 pcs.

Non CPGI parts come in a thin cardboard box. You cannot see through it nor hang it but it easily opens for inspection of the part. Std pack qty on these is 12 pcs

The W suffix designates the inclusion of a wall plate. It is pictured above in the CPGI packaging.

Thanks,

Mike O'Toole  
Tyco Electronics, Energy Inside Sales  
michael.otoole@te.com  
Office Phone 1-800-327-6996, Industrial Option Fax 1-800-527-8350